

135

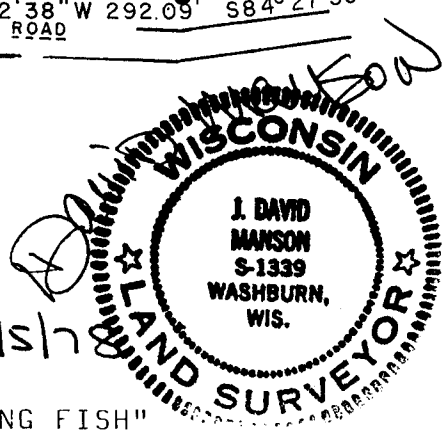
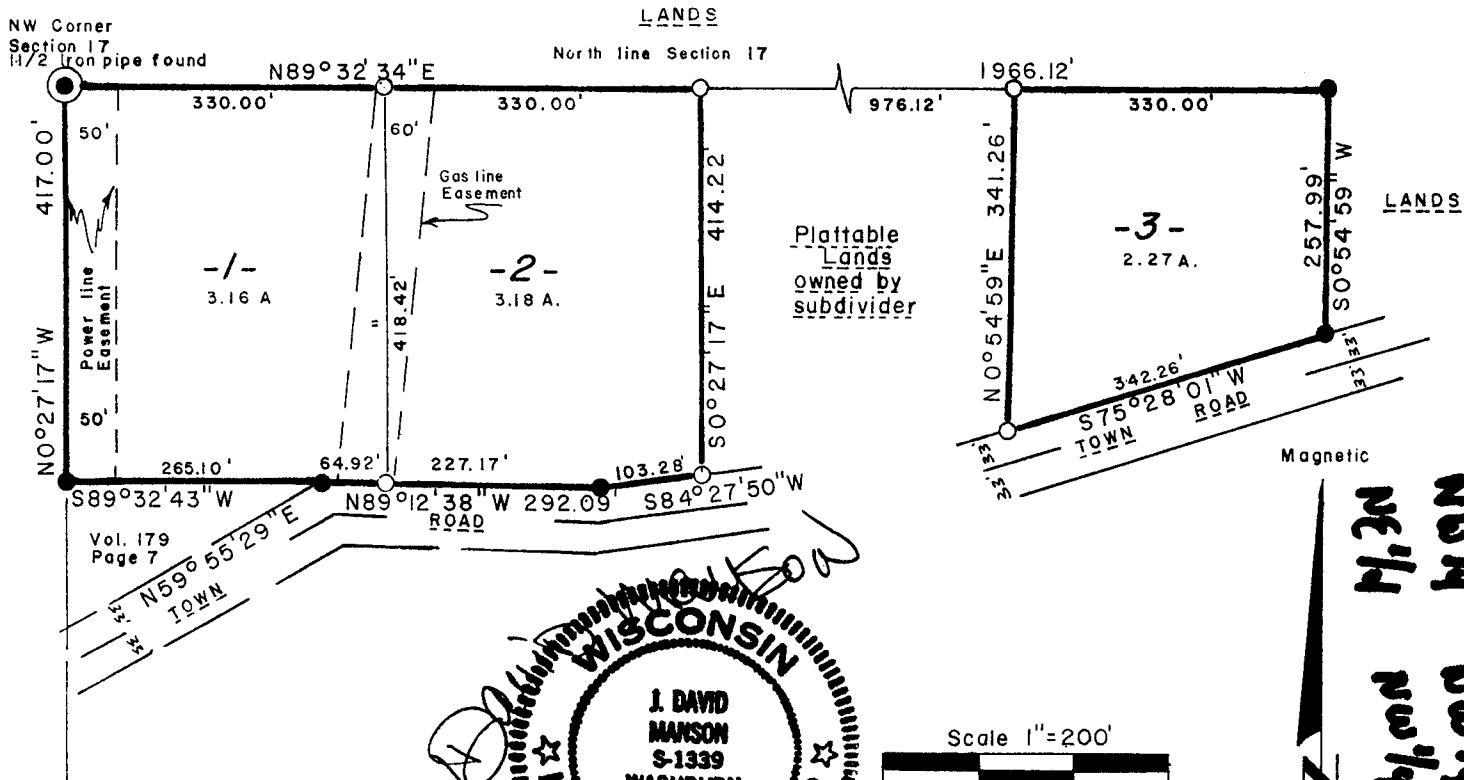
322202

REGISTER'S OFFICE } S.S.
 Bayfield County, Wis.
 RECORDED AT 4:10 P. M.
 ON JUL 5 1978 IN
 Vol. 2 of CSM Page 298

Certified Survey Map No. 000231
 Part of the
 NW 1/4 of the NW 1/4
 and
 Part of the
 NE 1/4 of the NW 1/4
 Section 17, T49N, R4W
 Bayfield County, Wisconsin

Otto Korpela

REGISTER OF DEEDS



NE 1/4 NW 1/4
 NW 1/4 NW 1/4
 17-49-4

I, J. David Manson, Registered Land Surveyor No. 1339, hereby certify that we have surveyed the property described below; that this plat is an accurate survey and true representation thereof and correctly shows the exterior boundary lines and the correct measurements thereof; that we have made such survey by order of NEIL MEYER, and that we have complied with Chapter 236.34 of the Wisconsin Statutes.

PARCELS 1, 2 and 3, being a part of the NW 1/4 of the NW 1/4 and a part of the NE 1/4 of the NW 1/4, Section 17, Township 49 North, Range 4 West, Bayview Township, Bayfield County, Wisconsin more particularly described as follows: Beginning at the Section corner common to Sections 7, 8, 17 & 18, marked by a 1 1/2" iron pipe, found in place, thence N 89° 32' 34"E, along the North line of said Section 17, 660.00 feet; thence continuing N 89° 32' 34"E, 976.12 feet; thence continuing N 89° 32' 34"E, 330.00 feet; thence S 0° 54' 59"W, 257.99 feet; thence S 75° 28' 01"W, 342.26 feet; thence N 0° 54' 59"E, 341.26 feet; thence S 89° 32' 34"W, 976.12 feet; thence S 0° 27' 17"E, 414.22 feet; thence S 84° 27' 50"W, 103.28 feet; thence N 89° 12' 38"W, 292.09 feet; thence S 89° 32' 43"W, 265.10 feet; thence N 0° 27' 17"W, 417.00 feet to the place of beginning. Subject to an easement 50.00 feet in width along the west line for a power transmission line and also subject to an easement 60.00 feet in width for an under ground gas line.

LAKE SUPERIOR LAND SURVEYORS, INC.
 Washburn, Wisconsin

APPROVED
 Bayfield County Zoning Comm.
 By Daniel K. Lu
 Date 5 JULY 1978 Map#

298