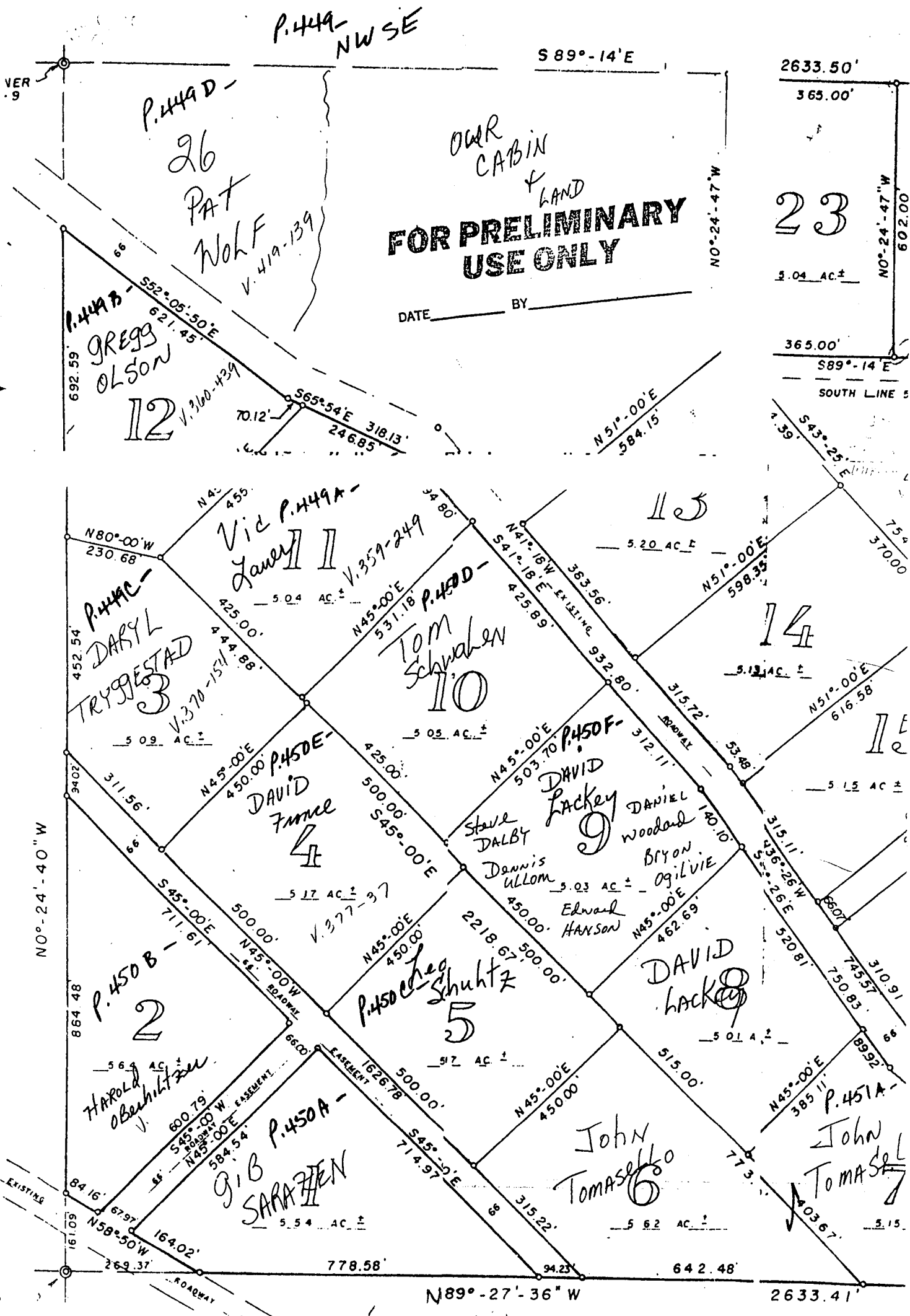


Sec. 6-44-9



OUR CABIN & LAND  
**FOR PRELIMINARY USE ONLY**

DATE \_\_\_\_\_ BY \_\_\_\_\_

23

14

11

10

12

3

2

5.54 AC ±

5.17 AC ±

5.03 AC ±

5.09 AC ±

5.04 AC ±

5.04 AC ±

5.62 AC ±

5.01 AC ±

5.03 AC ±

5.13 AC ±

5.20 AC ±

5.04 AC ±

365.00'

365.00'

3700'

75'

310.91'

745.57'

750.83'

899.2'

66'

310.91'

745.57'

750.83'

899.2'

66'

310.91'

745.57'

750.83'

899.2'

66'

310.91'

745.57'

750.83'

899.2'

66'

**FOR PRELIMINARY USE ONLY**

#1847



P.448 - NESE

EV4 CORNER  
SEC. 6-44-9  
EX. 2" PIPE

2633.50'

365.00'

365.00'

66.00'

400.00'

23

5.04 AC ±

22

5.04 AC ±

21

5.05 AC ±

V. 450-41

589°-14'E

400.00'

365.00'

365.00'

S89°-14'E 730.00'

SOUTH LINE 50' DRIVE EASM'T.

24

5.87 AC ±

20

5.05 AC ±

589°-14'E

400.00'

14

5.13 AC ±

15

5.15 AC ±

19

5.13 AC ±

16

5.02 AC ±

17

5.03 AC ±

Robert  
Roxbury

18

5.12 AC ±

48'

2633.41'

P.451 - SESE

SE CORNER  
SEC. 6-44-9  
EX. 1 1/2" BAR

SURVEY

SURVEY

DATED:

PLAT

0.  
IN THE  
TOWN OF

PRELIMINARY  
USE ONLY