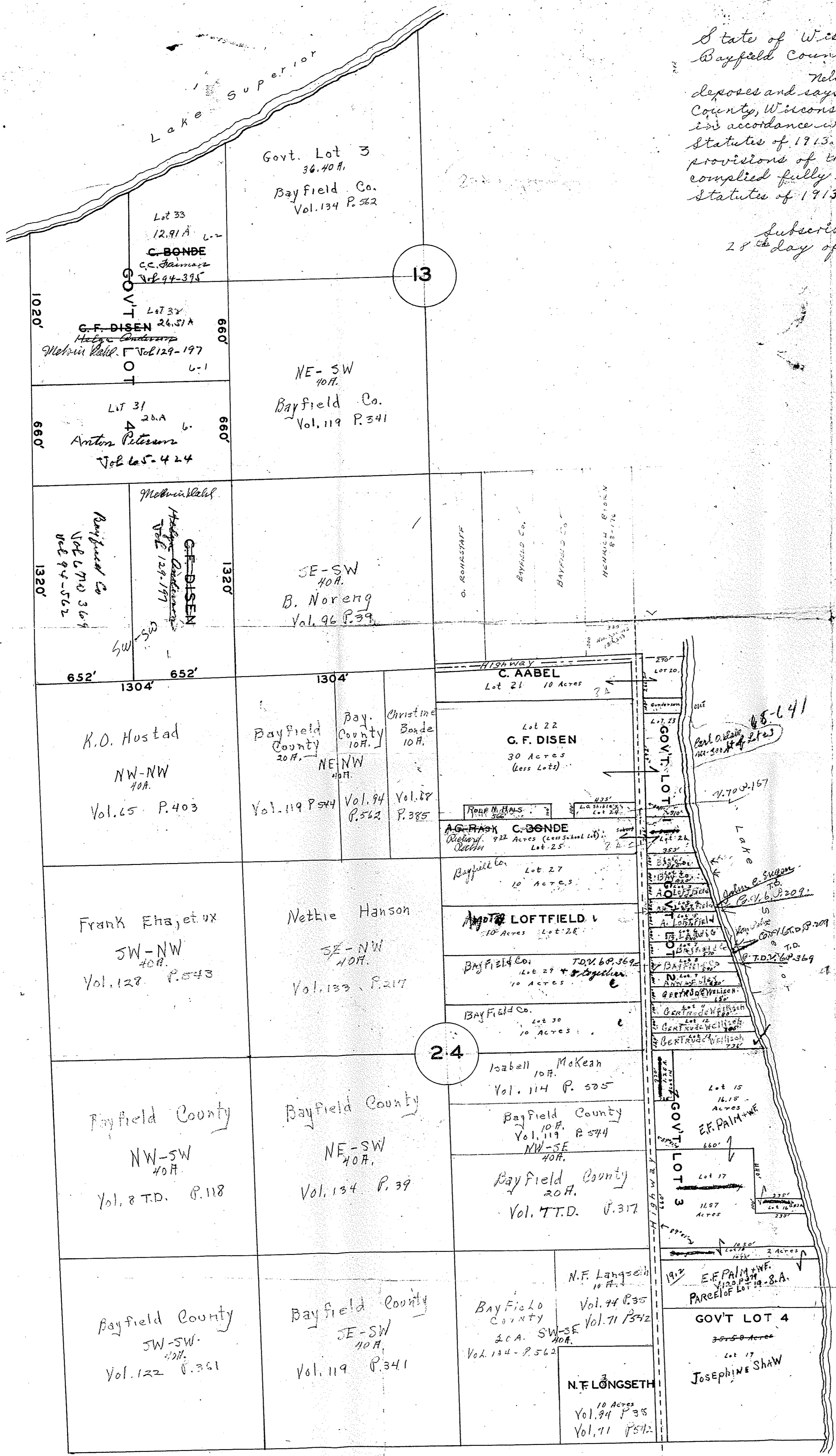


State of Wisconsin  
Bayfield County

Nels M. Oscar, being first duly sworn, deposes and says, that he is the County Clerk of Bayfield County, Wisconsin. That he caused this plat to be made in accordance with the provisions of section 1047 a, Statutes of 1913. That he has complied with all the provisions of the said section, and has also complied fully with section 2288 and 2289 Statutes of 1913.

Nels M. Oscar, County Clerk  
Subscribed and sworn to before me this  
28<sup>th</sup> day of July, 1915.

Geo. A. Calder  
Municipal Judge



SAND ISLAND  
PLAT SHOWING

Sec. 13 and 24 - T-52-R-5-W  
Subdivisions as called for by  
deeds on record at County  
Court House and conveyed  
by deed to the order of the  
County Clerk. See plat  
set where appropriate.

W. W. Smith  
County Surveyor



13-52-5  
24-52-5

#1908