

N 89° 12' 35" E

2,623.97'

2,654.00' Firetower Road

P.K. nail - temporary monument, to be replaced with Bayfield Co. brass capped pipe. Obliterated orig cor perpetuated by using centerlines of Firetower and C.T.H. J roads as witnesses

B.Ts.
Or 5" N 33° E 15.4
Or 8" S 54° E 13.7
Iron wire 3" S 34° W 6.1
Or 6" N 43° W 13.7

B.Ts
(W. of town) Or 10" S 63° E 16.4
Or 6" S 58° W 22.75
Or 5" N 42° W 26.0

B.Ts

Or 10" N 48° W 60.4'
Or 4" S 69° W 56.2'

Brass capped pipe set July 8, 1974

2,612.28'

N

2,627.97'

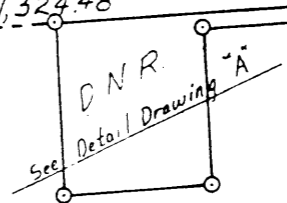
1,313.99'

1,319.48'

1,313.99'

N 0° 11' 37" E

1,324.48'



1/8 cor

B.Ts

Or 10" S 74° E 43.4' (Barometer pole)
Power Pole N 66° E 29.8' (Dist. to spike on S side)
Or 16" S 53° W 70.4'

Town road (blocked)

1/4 cor

2,625.40'

N 89° 08' 10" E

2,643.90'

1,321.95'

1/4 cor (proportioned)

B.Ts

Pw 8" S 87° W 6.8
Telephone Pole S 76° W 51.7' (spike on S side)
Power Pole N 14° E 85.8' (spike on SE side)
Apple 6" S 57° E 48.4'

Obliterated orig cor perpetuated as per Bayfield Co records (Hugo Nelson 914-937)

B.Ts

Or 5" N 74° W 67.6'
Or 10" N 56° W 78.2'
Power Pole S 12° W 32.2' (spike in E side)

N 0° 07' 26" E

TOWN RD

2,611.81'

B.Ts

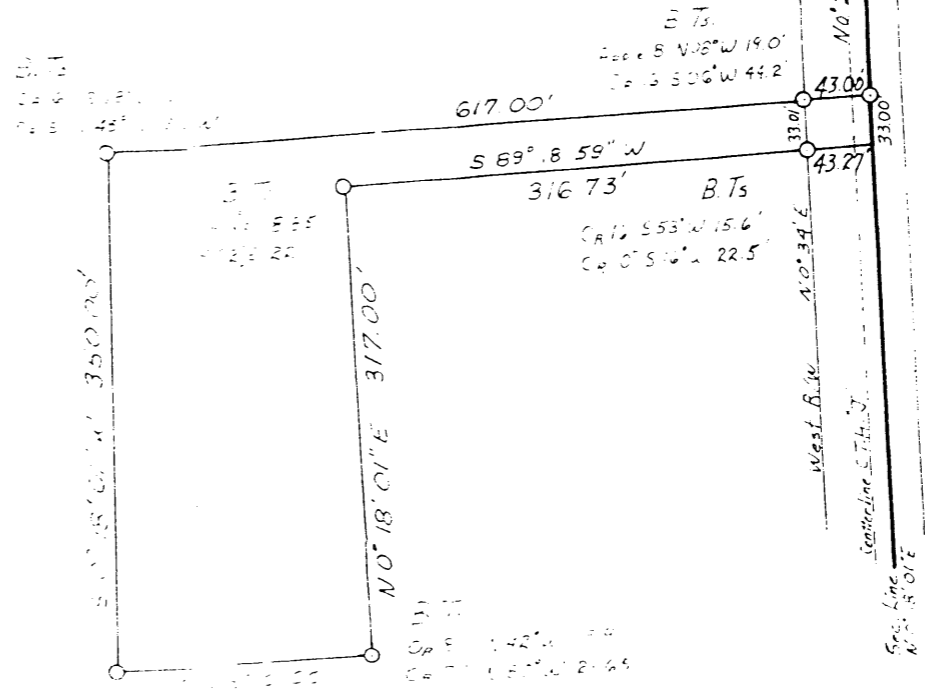
Or 6" N 53° W 117.1'
Or 6" N 82° W 87.8'
Telephone Pole N 44° E 48.7'
Power Pole S 57° E 43.0'

2,626.95'

N 89° 51' 29" E

N 0° 05' 17" E

2,635.81'



N 0° 18' 01" E

2,649.94'

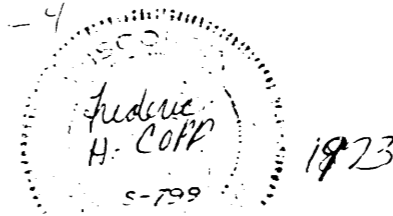
Note: A nail at the top of the road from the road stands 10.4 feet from the road line.

To Bayfield →

B.Ts

Engineer's 2" S 25° E 56.5'
Telephone Pole S 34° W 40.9' (spike on SE side)
Engineer's 2" S 50° E 66.3'

2,634.00'



Scale 1 in = 300 ft
November, 1923