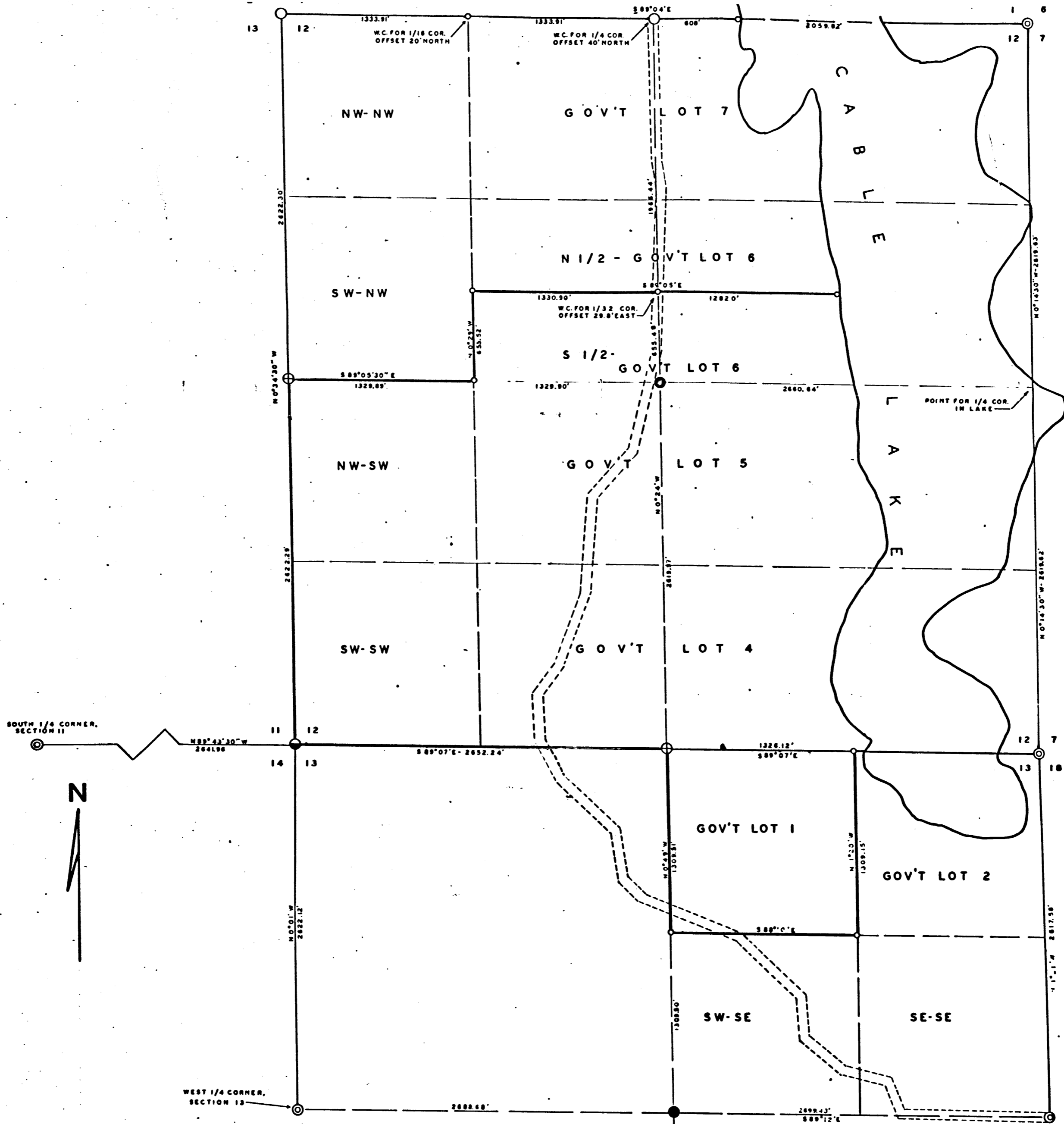


Doc. 15412 - 43-8



PLAT OF SURVEY:

SURVEY & SUBDIVISION OF SECTIONS 12 & 13, T43N, R8W, BAYFIELD CO., WIS.

TO DELINEATE THE LINES OF THE FOLLOWING PARCELS:

- GOV'T LOT 4, SECTION 12
- GOV'T LOT 5, " 12
- THE SOUTH 1/2 OF GOV'T LOT 6, SECTION 12
- THE NW-SW & SW-SW, SECTION 12
- GOV'T LOT, SECTION 13

AFFIDAVIT

I HEREBY CERTIFY THAT I HAVE SURVEYED THE EXTERIOR & INTERIOR LINES OF SECTIONS 12 & 13, T43N, R8W, BAYFIELD CO., WIS., AS SHOWN ON THIS PLAT. THAT I HAVE FULLY COMPLIED WITH THE STATUTES OF THE STATE OF WISCONSIN & THE U.S. BUREAU OF LAND MANAGEMENT, AND THAT THIS PLAT IS A TRUE & ACCURATE REPRESENTATION OF SAID SURVEY.

Thomas W. Nelson
 THOMAS W. NELSON
 BAYFIELD CO. SURVEYOR
 WIS. REG. NO. 5-263

LEGEND

- ⊙ CORNER ESTABLISHED ON PREVIOUS SURVEY.
 - ⊕ " " BY SINGLE PROPORTION.
 - ⊖ " " " DOUBLE "
 - ⊗ CORNER FOUND & REMONUMENTED.
 - CENTER 1/4 SET AT INTERSECTION OF STRAIGHT LINES BETWEEN OPPOSITE 1/4 CORNERS.
- ALL THE ABOVE CORNERS ARE STANDARD 2" BAYFIELD CO. MONUMENTS, STAMPED TO IDENTIFY THE CORNER.
 ○ 1" X 36" IRON PIPE
 BEARINGS ARE TRUE, BASED ON SOLAR OBSERVATIONS.

SCALE - 1 INCH = 400 FEET

MARCH 6, 1963

235169

REGISTRY'S OFFICE
 Bayfield County, Wis. } S.S.
 FILED IN COPY 12-1-2000
 MAR 15 1963
 H. R. P. 15
 Enc. P.

448/3