

PART OF:
GOV'T LOT 1, SEC 32, T 44N, R 6 W
BAYFIELD CO., WIS

DIAMOND

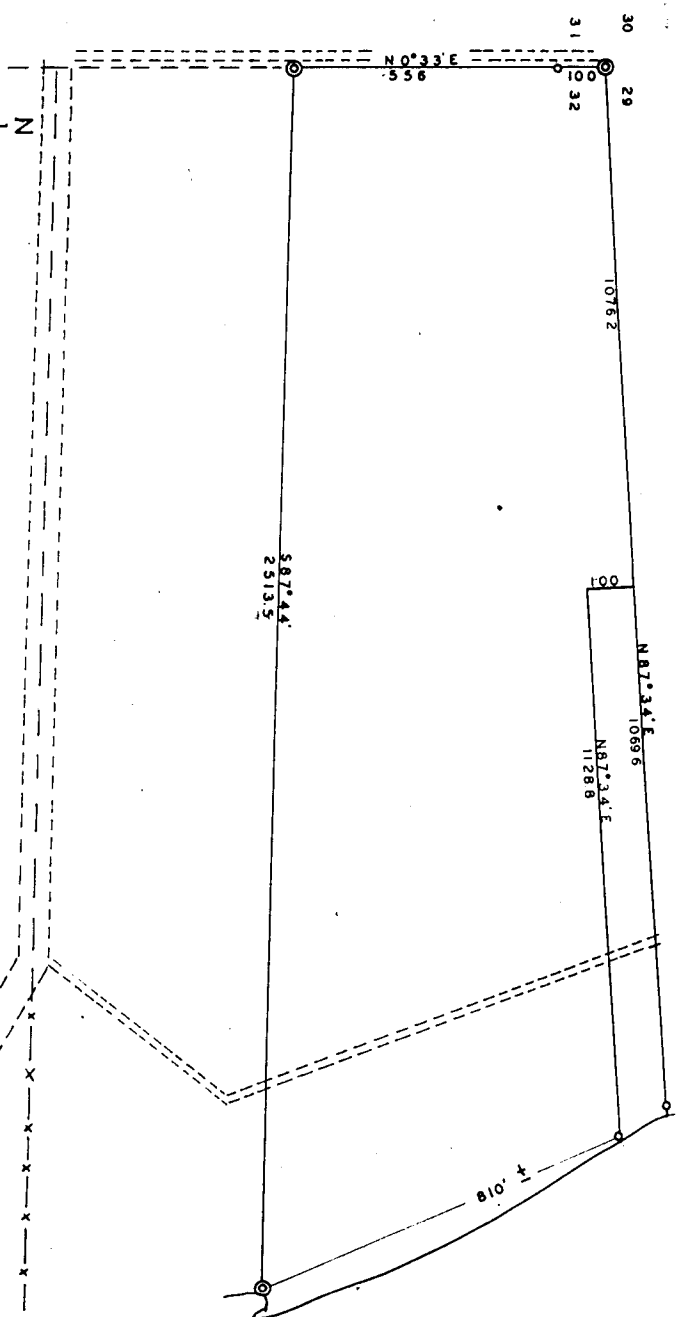
L A K E

000001
CSM No.
214279

REGISTER'S OFFICE
Bayfield County, Wis. } S.S.

FILED IN COPY 3:13:00 P.M.
ON DEC 2 1958 IN

Vol. 1 of S.M. 1958
Earl Pedersen
REGISTER OF DEEDS



LEGEND

- CORNER FOUND & ACCEPTED
- IRON PIPE SET
- 887.44' E TRUE BEARING
- 2153.5 " DISTANCE
- SCALE 1 INCH = 200 FEET
- OCTOBER 17, 1958.
- REVISED NOV. 3, 1958

CERTIFICATE:

I HEREBY CERTIFY THAT I HAVE MADE ASURVEY OF THE FOLLOWING DESCRIBED PROPERTY, & THAT THIS MAP IS A TRUE & ACCURATE REPRESENTATION OF THAT SURVEY.
" ALL OF GOV'T LOT 1, SEC. 32, T44N, R6W, BAYFIELD CO., WIS. EXCEPT THE NORTH 100 FEET AND THE SOUTH 500 FEET."

Thomas W. Nelson
THOMAS W NELSON
BAYFIELD CO. SURVEYOR

