

SURVEY of SECTIONS  
7 and 18 T.43N., R.7W.  
12 and 13 T.43N., R.8W.

This Survey was for the  
F.H. Drummond Co. and  
Walter Wald, Cable, Wis.

By: A. J. LYTLE, C.E. - 1936.

*A. J. Lytle, C.E.*

1 inch  $\xrightarrow{\text{SCALE.}}$  200 Ft.

CABLE LAKE

CABLE LAKE

LOT - 4.

TRUE NORTH  $83^{\circ}39'N$   
MAGNETIC NORTH

ISLE

SHORE LINE

SHORE LINE

4986'

913.6'

1319'

306.9'

MC

MC

MC

MC

MC

MC

MC

350'

$N 87^{\circ} 21' W$

12

13

7

18

MC

MC

MC

MC

MC

MC

MC

MC

MC

MC

MC

MC

MC

MC

MC

MC

MC

MC

MC

MC

MC

MC

MC

MC

MC

MC

MC

MC

MC

MC

MC

MC

MC

MC

MC

MC

MC

MC

MC

MC

MC

MC

MC

MC

MC

MC

MC

MC

MC

MC

MC

MC

MC

MC

MC

MC

MC

MC

MC

MC

MC

MC

MC

MC

MC

MC

MC

MC

MC

MC

MC

MC

MC

MC

MC

MC

MC

MC

MC

MC

MC

MC

MC

MC

MC

MC

MC

MC

MC

MC

MC

MC

MC

MC

MC

MC

MC

MC

MC

MC

MC

MC

MC

MC

MC

MC

MC

MC

MC

MC

MC

MC

MC

MC

MC

MC

MC

MC

MC

MC

MC

MC

MC

MC

MC

MC

MC

MC

MC

MC

MC

MC

MC

MC

MC

MC

MC

MC

MC

MC

MC

MC

MC

MC

MC

MC

MC

MC

MC

MC

MC

MC

MC

MC

MC

MC

MC

MC

MC

MC

MC

MC

MC

MC

MC

MC

MC

MC

MC

MC

MC

MC

MC

MC

MC

MC

MC

MC

MC

MC

MC

MC

MC

MC

MC

MC

MC

MC

MC

MC

MC

MC

MC

MC

MC

MC

MC

MC

MC

MC

MC

MC

MC

MC

MC

MC

MC

MC

MC

MC

MC

MC

MC

MC

MC

MC

MC

MC

MC

MC

MC

MC

MC

MC

MC

MC

MC

MC

MC

MC

MC

MC

MC

MC

MC

MC

MC

MC

MC

MC

MC

MC

MC

MC

MC

MC

MC

MC

MC

MC

MC

MC

MC

MC

MC

MC

MC

MC

MC

MC

MC

MC

MC

MC

MC

MC

MC

MC

MC

MC

MC

MC

MC

MC

MC

MC

MC

MC

MC

MC

MC

MC

MC

MC

MC

MC

MC

MC

MC

MC

MC

MC

MC

MC

MC

MC

MC

MC

MC

MC

MC

MC

MC

MC

MC

MC

MC

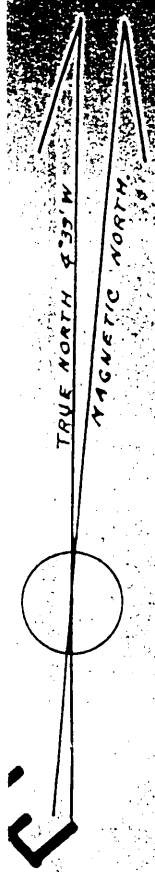
MC

MC

MC

MC

MC

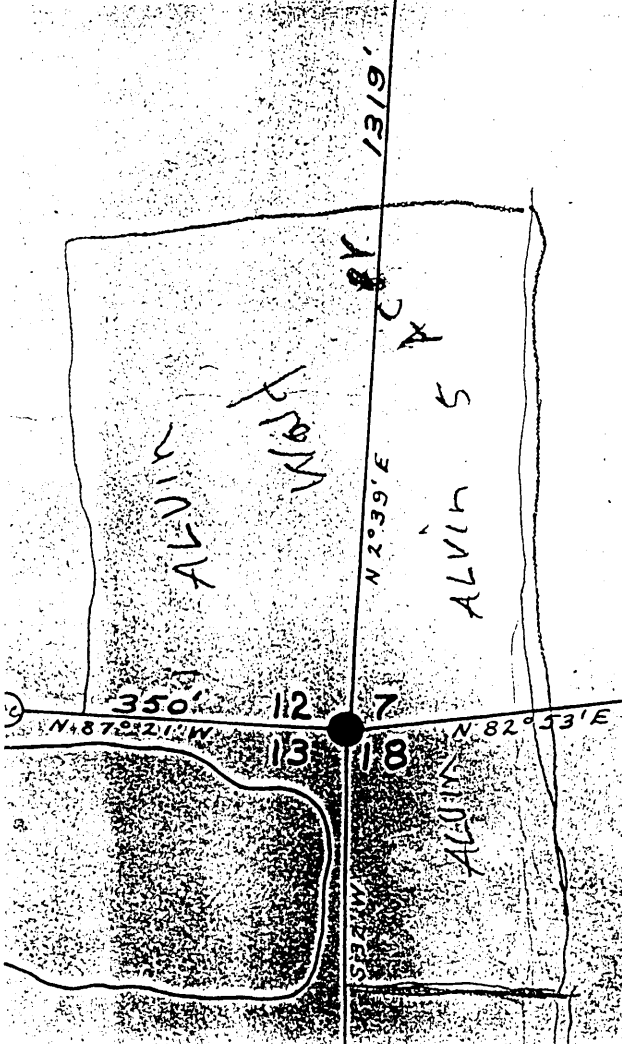


ISLE

STONE LINE

LOT - 1.

SW - SW



913.6'

1382'

1256'

1296.1'

1302'

15413 43-8  
1418' 42-1