

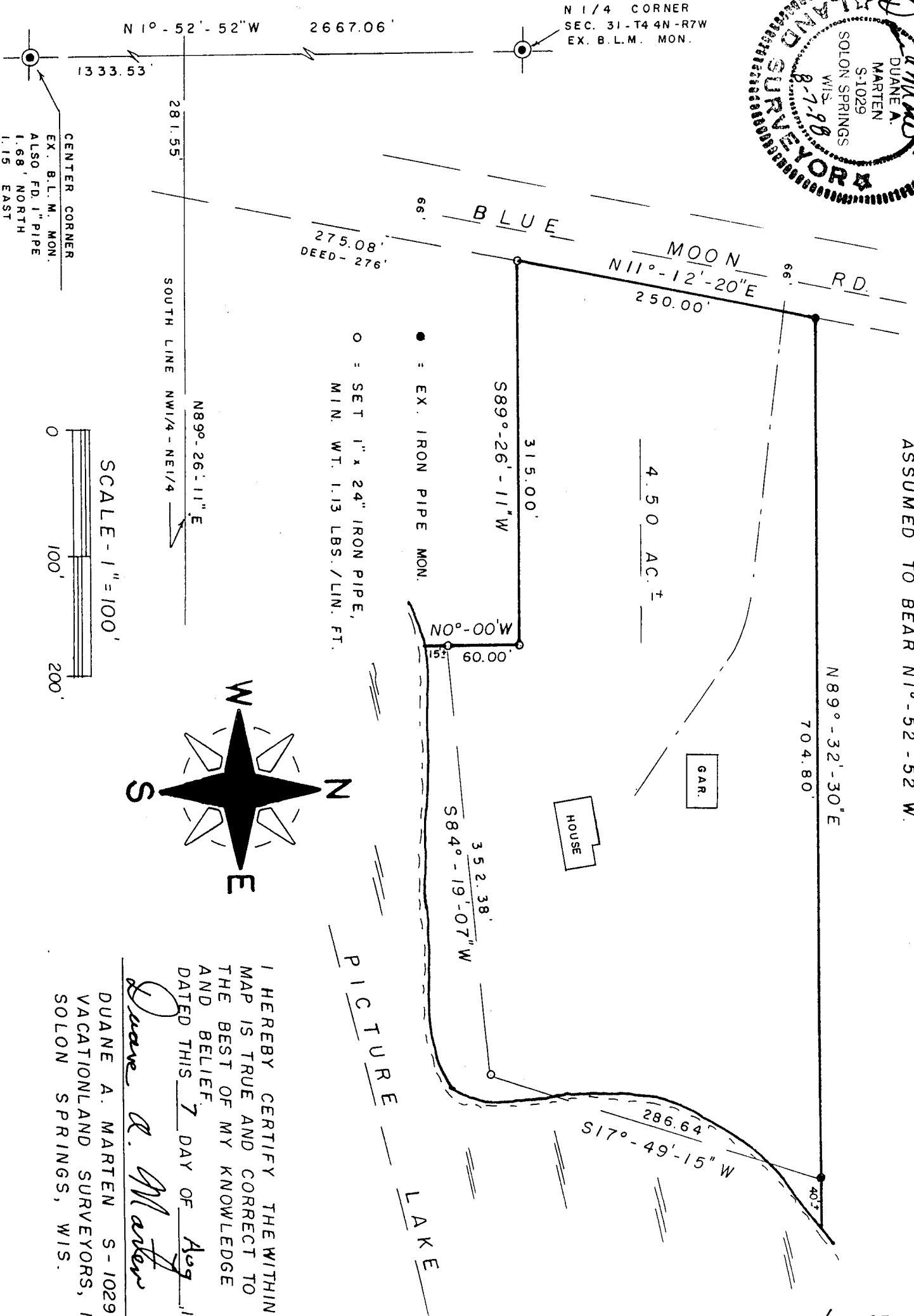
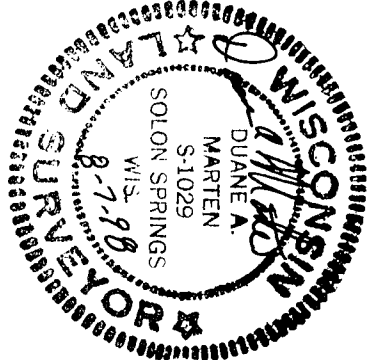


Stock No. 26273

2889

PLAT OF SURVEY

OF LANDS DESCRIBED IN VOL. 668 OF RECORDS, PAGE 252 AND LOCATED IN THE NW1/4-NE1/4, SEC. 31-T44N-R7W, TOWN OF DRUMMOND, BAYFIELD COUNTY, WISCONSIN.



BEARINGS REFERENCED TO N-S 1/4 LINE ASSUMED TO BEAR N 1°-52'-52" W.

NW-NE 31-44-7

I HEREBY CERTIFY THE WITHIN MAP IS TRUE AND CORRECT TO THE BEST OF MY KNOWLEDGE AND BELIEF.
 DATED THIS 7 DAY OF Aug, 1998.

Duane A. Marten
 DUANE A. MARTEN S-1029
 VACATIONLAND SURVEYORS, INC.
 SOLON SPRINGS, WIS.

CENTER CORNER
 EX. B.L.M. MON.
 ALSO F.D. 1" PIPE
 1.68' NORTH
 1.15' EAST

○ = SET 1" x 24" IRON PIPE,
 MIN. WT. 1.13 LBS./LIN. FT.
 ● = EX. IRON PIPE MON.