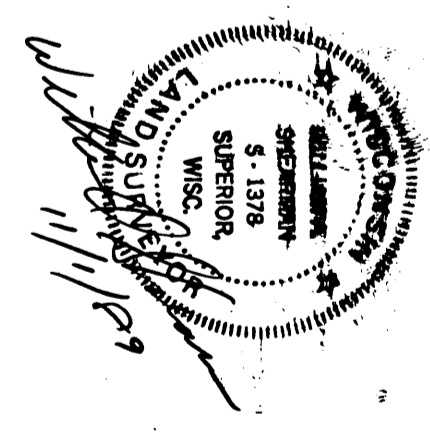
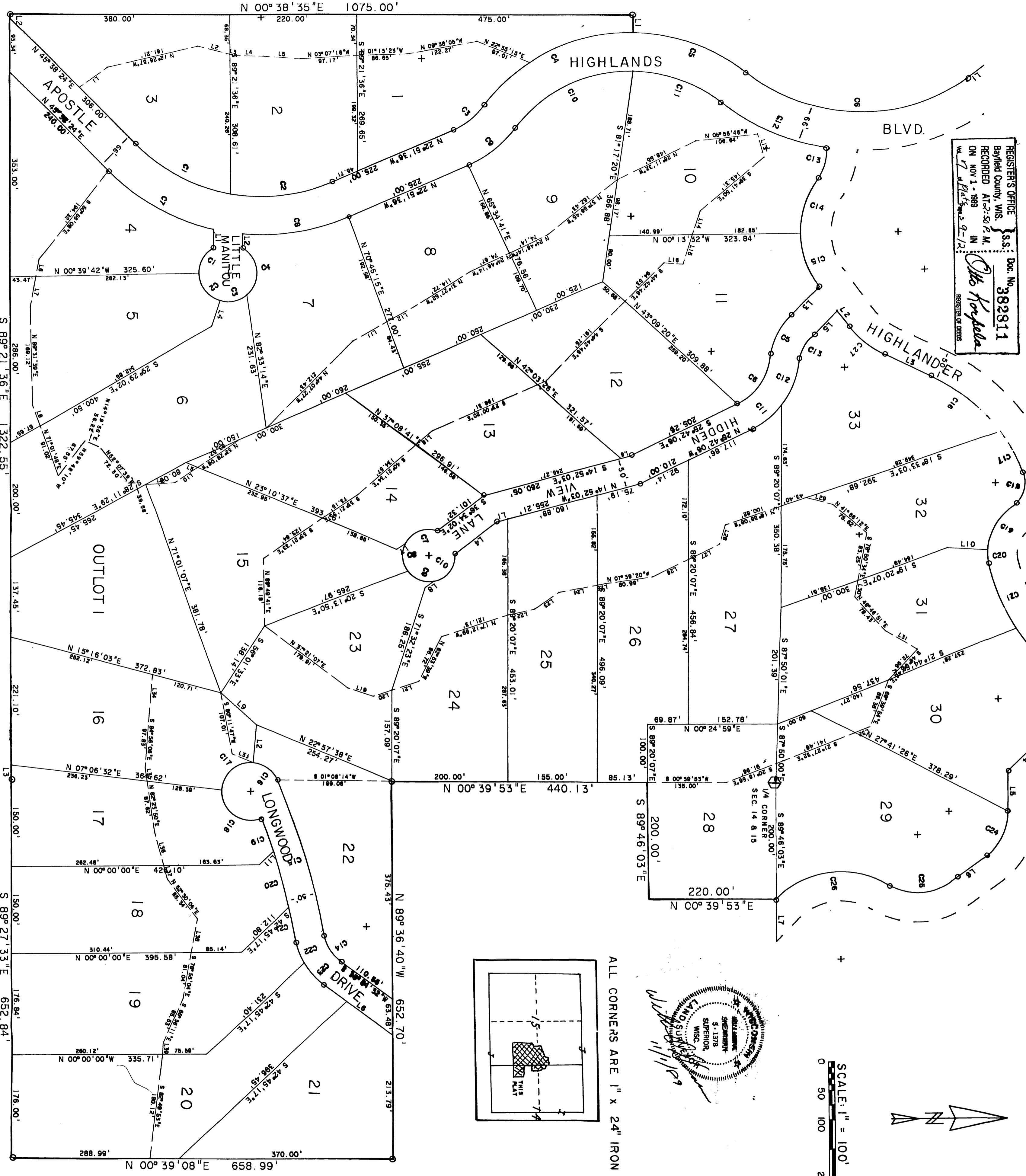


APOSTLE HIGHLANDS

LOCATED IN THE SE 1/4 - NE 1/4 & NE 1/4 - SE 1/4 OF SECTION 15 AND THE SW 1/4 - NW 1/4 & NW 1/4 - SW 1/4 OF SECTION 14, TOWN 50 NORTH, RANGE 4 WEST, TOWN OF BAYFIELD, BAYFIELD COUNTY, WISCONSIN

REGISTRAR'S OFFICE:
 Bayfield County, WIS.
 RECORDED AT 2:50 P.M.
 ON NOV 1 - 1989
 IN WA 7 of 1989, p. 9-12
 S.S.: Doc. No. 382811
Chris Forstella
 REGISTRAR OF DEEDS



ALL CORNERS ARE 1" x 24" IRON PIPE SET

Sheet 1 of 4

66' ROAD & NORTH ROAD

CURVE	DELTA ANGLE	RADIUS	ARC	TANGENT	CHORD	CHORD BEARING
C 2	33° 43' 43"	309.00'	181.90'	93.67'	179.29'	N 05° 59' 45" W
C 3	29° 30' 00"	134.00'	68.99'	35.28'	68.23'	N 37° 36' 36" W
C 4	53° 50' 18"	316.00'	296.93'	160.45'	286.13'	N 25° 26' 27" W
C 5	37° 39' 42"	316.00'	207.71'	107.76'	203.99'	N 20° 18' 33" E
C 6	72° 02' 05"	309.00'	388.49'	224.64'	363.40'	N 03° 07' 22" E
C 7	32° 00' 00"	375.00'	209.44'	107.53'	206.73'	N 29° 38' 24" E
C 8	28° 45' 24"	375.00'	188.21'	96.13'	186.24'	N 08° 28' 54" W
C 9	29° 30' 00"	200.00'	102.97'	52.66'	101.84'	N 37° 36' 36" W
C 10	53° 50' 16"	250.00'	234.91'	126.94'	226.36'	N 25° 26' 28" W
C 11	37° 39' 44"	250.00'	164.33'	85.26'	161.39'	N 20° 18' 32" E
C 12	29° 30' 00"	375.00'	193.34'	98.73'	190.95'	N 24° 23' 24" E
C 13	34° 00' 00"	100.00'	59.34'	30.57'	58.47'	S 73° 00' 00" E
C 14	34° 13' 30"	162.50'	97.07'	50.03'	50.03'	S 73° 06' 45" E
C 15	34° 46' 30"	162.50'	98.63'	50.89'	97.12'	N 72° 23' 15" E
C 16	28° 56' 16"	300.00'	151.52'	77.41'	149.91'	N 39° 36' 28" E
C 17	15° 21' 42"	300.00'	66.08'	38.87'	80.19'	N 61° 45' 28" E
C 18	73° 43' 38"	50.00'	66.08'	38.87'	61.38'	S 72° 41' 52" E
C 19	51° 45' 49"	100.00'	90.34'	48.52'	87.30'	S 60° 42' 57" E
C 20	17° 14' 11"	100.00'	30.08'	15.16'	29.97'	N 84° 47' 03" E
C 21	18° 42' 01"	350.00'	114.23'	57.63'	113.73'	N 66° 48' 57" E
C 22	10° 57' 18"	350.00'	66.92'	33.56'	66.82'	N 51° 59' 17" E
C 23	89° 00' 00"	100.00'	155.33'	98.27'	140.18'	S 88° 59' 12" E
C 24	54° 00' 00"	100.00'	94.25'	50.95'	90.80'	S 62° 46' 03" E
C 25	67° 41' 55"	100.00'	118.16'	67.07'	111.40'	S 01° 55' 05" E
C 26	77° 59' 35"	150.00'	204.19'	121.45'	188.78'	S 07° 03' 55" E

LINE	BEARING	DISTANCE
L 1	N 36° 54' 00" W	45.86'
L 2	N 80° 34' 51" W	71.44'
L 3	N 25° 08' 20" E	89.34'
L 4	S 44° 29' 22" E	75.85'
L 5	S 89° 46' 03" E	69.73'
L 6	S 35° 46' 03" E	67.89'
L 7	S 89° 46' 03" E	72.36'
L 1	S 89° 21' 36" E	30.10'
L 2	S 89° 21' 36" E	6.66'
L 3	S 89° 21' 36" E	25.00'
L 4	S 71° 59' 45" E	47.52'
L 5	N 23° 10' 34" E	21.36'
L 6	S 14° 52' 03" E	14.78'
L 7	S 32° 54' 09" E	17.96'
L 8	S 35° 19' 18" E	18.75'
L 9	N 42° 53' 08" E	82.79'
L 10	S 03° 24' 09" W	68.35'
L 11	S 42° 45' 17" E	34.17'

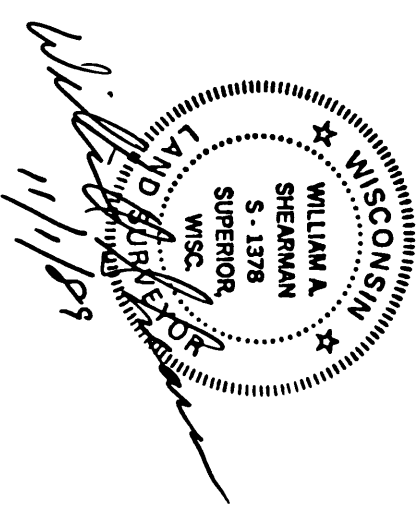
BALL ROADS

CURVE	DELTA ANGLE	RADIUS	ARC	TANGENT	CHORD	CHORD BEARING
C 1	60° 46' 24"	50.00'	53.03'	29.32'	50.58'	S 59° 44' 48" E
C 2	71° 51' 40"	50.00'	62.71'	36.23'	58.68'	N 53° 56' 10" E
C 3	57° 17' 45"	50.00'	50.00'	27.32'	47.94'	N 10° 38' 32" W
C 4	110° 04' 11"	50.00'	96.05'	71.50'	81.95'	S 85° 40' 30" W
C 5	36° 00' 00"	125.00'	78.54'	40.61'	77.25'	S 64° 30' 00" E
C 6	56° 47' 54"	100.00'	99.13'	54.07'	95.12'	S 54° 06' 03" E
C 7	82° 35' 21"	45.00'	64.87'	39.53'	59.39'	S 21° 36' 36" E
C 8	63° 39' 43"	45.00'	50.00'	27.93'	47.47'	N 85° 15' 49" E
C 9	63° 39' 43"	45.00'	50.00'	27.93'	47.47'	N 21° 36' 06" E
C 10	82° 35' 21"	45.00'	64.87'	39.53'	59.39'	N 51° 31' 26" W
C 11	26° 10' 46"	150.00'	80.16'	41.06'	79.21'	N 38° 47' 29" W
C 12	30° 37' 08"	75.00'	47.12'	24.37'	46.35'	N 67° 11' 26" W
C 13	36° 00' 00"	75.00'	57.08'	30.00'	55.71'	S 58° 21' 33" W
C 14	43° 36' 26"	75.00'	47.12'	24.37'	46.35'	S 36° 27' 18" W
C 15	12° 46' 39"	1250.00'	278.76'	139.96'	278.19'	S 73° 46' 27" W
C 16	61° 51' 37"	50.00'	80.59'	29.96'	51.40'	S 40° 38' 49" E
C 17	92° 20' 37"	50.00'	100.01'	52.09'	72.14'	S 35° 52' 48" E
C 18	02° 53' 33"	1200.00'	60.58'	30.30'	60.57'	N 35° 52' 48" E
C 19	04° 46' 34"	1200.00'	100.03'	50.04'	100.00'	N 75° 03' 12" E
C 20	02° 43' 18"	1200.00'	57.00'	28.51'	56.99'	N 78° 48' 07" E
C 21	19° 46' 20"	125.00'	43.14'	21.78'	42.92'	N 70° 16' 36" E
C 22	23° 50' 06"	125.00'	52.00'	26.38'	51.63'	N 48° 28' 23" E

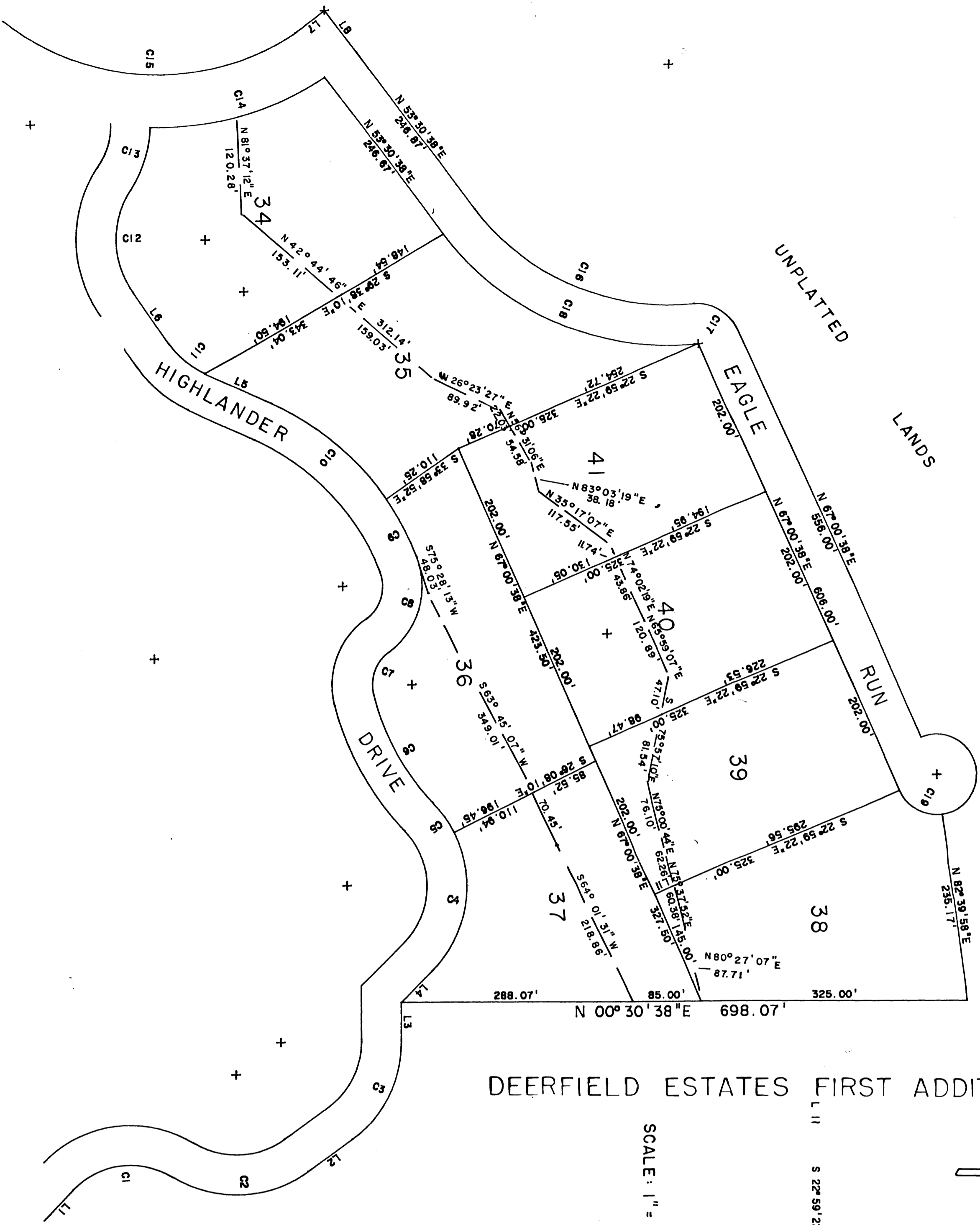
LINE	BEARING	DISTANCE
L 1	S 89° 21' 36" E	31.70'
L 2	N 89° 21' 36" W	23.66'
L 3	S 46° 30' 00" E	73.00'
L 4	N 36° 34' 02" W	91.74'
L 5	N 46° 30' 00" W	62.83'
L 6	N 36° 33' 20" E	148.00'

FAIRWAY EASEMENTS

LINE	BEARING	DISTANCE
L 1	N 34° 21' 45" W	60.12'
L 2	N 14° 49' 47" E	56.65'
L 3	N 14° 49' 47" E	8.99'
L 4	N 02° 14' 04" E	49.55'
L 5	N 04° 52' 20" E	64.97'
L 6	S 78° 01' 47" E	30.57'
L 7	S 78° 01' 47" E	53.93'
L 8	N 71° 01' 48" E	38.12'
L 9	N 33° 35' 42" W	50.83'
L 10	N 28° 58' 29" W	47.33'
L 11	N 28° 58' 29" W	67.74'
L 12	N 75° 26' 47" E	53.93'
L 13	S 04° 35' 26" W	41.80'
L 14	S 71° 52' 28" E	43.21'
L 15	S 71° 52' 28" E	32.58'
L 16	S 04° 35' 26" W	36.60'
L 17	S 40° 21' 34" E	45.94'
L 18	N 18° 34' 43" E	45.94'
L 19	N 18° 08' 48" W	34.58'
L 20	N 18° 08' 48" W	48.71'
L 21	N 12° 08' 47" W	46.76'
L 22	N 33° 14' 47" W	52.13'
L 23	N 10° 36' 29" W	67.44'
L 24	N 10° 36' 29" W	13.72'
L 25	N 29° 39' 07" W	68.51'
L 26	N 29° 39' 07" W	58.98'
L 27	N 72° 05' 40" W	34.52'
L 28	N 18° 37' 43" E	46.24'
L 29	S 78° 50' 34" E	28.28'
L 30	N 30° 41' 35" E	63.89'
L 31	S 21° 27' 32" E	27.42'
L 32	S 23° 18' 31" W	39.40'
L 33	S 64° 47' 04" E	63.38'
L 34	N 82° 23' 50" E	23.57'
L 35	N 79° 55' 04" E	80.75'
L 36	N 79° 55' 04" E	24.72'
L 37	S 78° 55' 04" E	59.42'
L 38	S 66° 48' 47" E	19.44'



APOSTLE HIGHLANDS

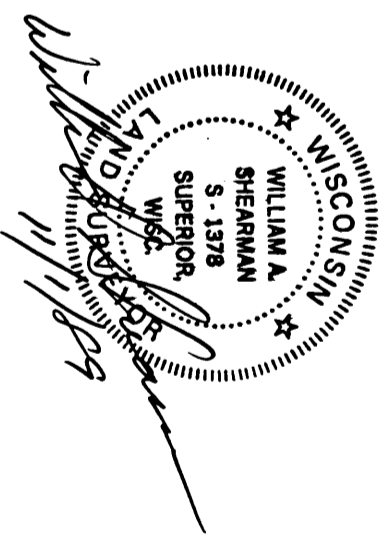


DEERFIELD ESTATES FIRST ADDITION

SCALE: 1" = 100'



L 11 S 22°59'22"E 28.44'



CURVE	CENT ANGLE	RADIUS	ARC DIST.	TANG DIST.	CH. DIST.	CH. BEARING
C 1	77°59'36"	100.00'	136.12'	80.97'	125.85'	N 07°03'55"W
C 2	67°41'55"	150.00'	177.23'	100.60'	187.10'	N 01°55'05"W
C 3	57°59'52"	150.00'	141.37'	76.43'	136.19'	N 62°46'07"W
C 4	71°39'59"	150.00'	187.57'	108.88'	175.59'	N 80°18'47"W
C 5	17°21'10"	150.00'	45.43'	22.88'	45.28'	S 85°11'13"W
C 6	29°39'19"	300.00'	155.21'	72.42'	153.55'	S 81°20'18"W
C 7	69°00'00"	50.00'	60.21'	34.58'	58.94'	N 69°20'03"W
C 8	75°43'38"	100.00'	132.17'	77.75'	122.76'	N 72°41'52"W
C 9	13°25'08"	350.00'	81.97'	41.17'	81.79'	S 62°43'44"W
C 10	30°52'50"	350.00'	188.64'	98.67'	186.36'	S 40°34'45"W
C 11	29°51'40"	112.50'	135.48'	30.00'	57.97'	S 40°04'10"W
C 12	69°00'00"	112.50'	155.63'	77.32'	127.44'	S 89°30'00"W
C 13	32°03'42"	150.00'	83.94'	43.10'	82.85'	N 15°27'47"W
C 14	34°51'48"	375.00'	228.18'	117.75'	224.64'	N 03°07'22"E
C 15	72°02'05"	308.00'	388.49'	224.64'	363.40'	N 24°00'39"E
C 16	59°00'00"	300.00'	308.92'	189.73'	295.45'	N 30°45'39"E
C 17	72°30'00"	50.00'	63.27'	36.66'	59.13'	N 24°00'39"E
C 18	59°00'00"	350.00'	360.41'	198.02'	344.70'	N 24°00'39"E
C 19	74°20'40"	50.00'	64.88'	37.91'	60.42'	N 29°50'18"E

LINE	BEARING	DISTANCE
L 1	N 46°03'43"W	52.31'
L 2	N 35°48'03"W	87.80'
L 3	N 89°48'03"W	48.87'
L 4	N 44°29'22"W	55.00'
L 5	S 25°08'20"W	89.34'
L 6	S 55°00'00"W	78.72'
L 7	N 36°54'00"W	45.86'
L 8	N 53°30'38"E	66.00'

