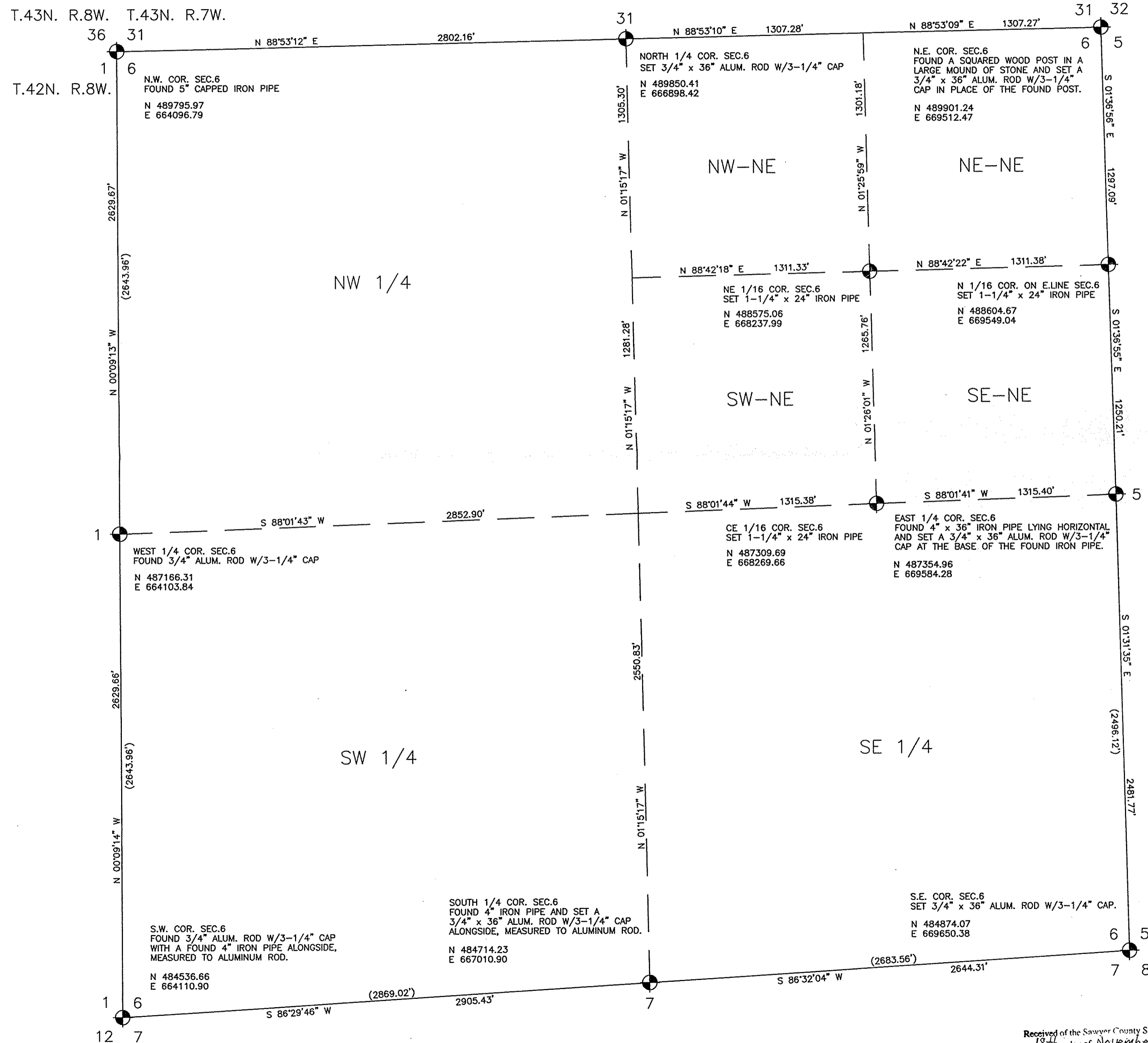


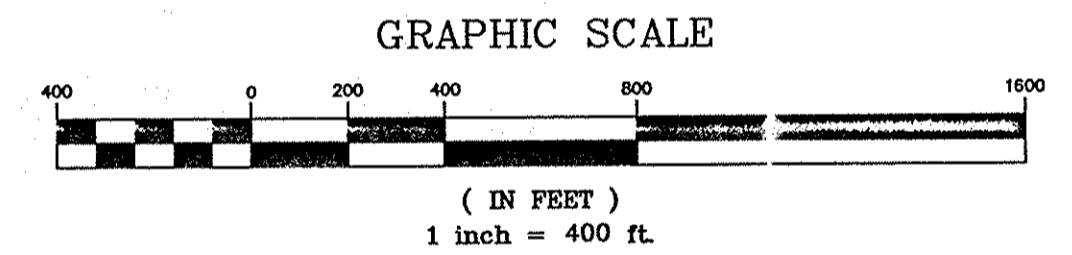
#3899 7-24-18

# MAP OF SURVEY

## SURVEY OF SECTION 6, T42N, R7W, TOWN OF SPIDER LAKE, SAWYER COUNTY, WISCONSIN.



FOR - SAWYER COUNTY



⊙ DENOTES MONUMENT AS NOTED

FIELD BOOKS: 427-1

(XXXX.XX') = DISTANCES FROM HARRY JOHNSON'S 1911-1912 SURVEY.

THIS SECTION WAS A PART OF AN APPLIED LEAST SQUARES ADJUSTMENT CONSTRAINING IT TO THE HIGH ACCURACY REFERENCE NETWORK. DIMENSIONS SHOWN HEREON EXCEED 1/10,000. COORDINATE VALUES ARE SUBJECT TO CHANGE AS UPDATED ADJUSTMENTS ARE PERFORMED.

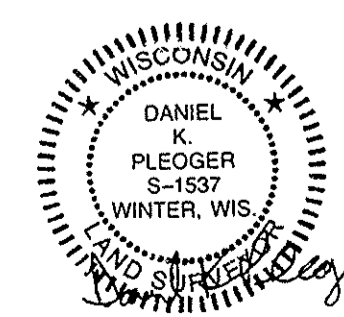
COORDINATES ARE REFERENCED TO THE SAWYER COUNTY COORDINATE SYSTEM AND FOR SECTION SUBDIVISION PURPOSES GRID AND GROUND DISTANCES ARE EQUAL. BASED ON NAD 83 (1991) ADJUSTMENT. CONVERGENCE ANGLES RUN FROM -0 07' 58" TO -0 07' 02" ACROSS THE SECTION.

NO SEARCH HAS BEEN MADE FOR THE POSSIBILITY OF EXISTING INTERIOR SUBDIVISIONAL CORNERS.

U.S. PUBLIC LAND SURVEY MONUMENT RECORDS ARE ON FILE FOR THE CORNERS SHOWN HEREON.

BY - SAWYER COUNTY SURVEYOR'S OFFICE

I, Daniel K. Pleoger, Wisconsin Registered Land Surveyor, hereby certify that in compliance with the applicable provisions of AE-7 of the Wisconsin Administrative Code, I have surveyed and mapped the land herein described and that in my opinion this map is a correct representation of the survey made, to the best of my knowledge and belief.



DANIEL K. PLEOGER  
S-1537  
NOVEMBER 18, 2003

Received of the Sawyer County Surveyors Office this  
18th day of November 2003  
*Jesse B. Szyjan*