

4 3 0 7 3 6 2 0 0 0
T. R. Sec. Row Col.

REGISTER'S OFFICE
Bayfield County, Wis } S.S.
RECORDED AT 1:50 P. M.
MAR 19 1981

RD-7150-11 (9/1/86) H. C. MILLER CO., MILWAUKEE 475370

CERTIFIED LAND CORNER RESTORATION

Vol. 1 of CCR Page 264

State of Wisconsin }
County of Bayfield } ss.

338410

Otto Korpela
REGISTER OF DEEDS

I Terry J. Michek, do hereby certify that on the 3rd day of December, 19 80, I found evidence of the Quarter corner of Sections 31 & 36 Township 43 North, Range 6 West & 7 West, Fourth Principal Meridian, as described hereon; and that from this evidence I established a new monument and accessories as described hereon to perpetuate the original location of this corner:

Description of original monument and accessories and subsequent restorations:

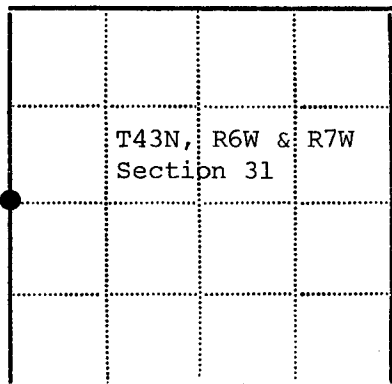
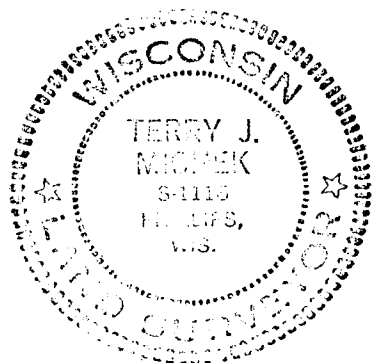
Original corner established in 1857
by Albert C. Stuntz, Government
Deputy Surveyor.
Sugar 7", N72°W, 20 links.
Sugar 7", S48°E, 20 links.

Description of corner evidence found:

Corner restored by single proportionate measure at mid-point and on line between the northwest corner of Section 31 and the southwest corner of Section 31.
Found no evidence of a corner post or original bearing trees.
Corner falls on East slope of hill, 275'+- North of logging road.

Description of monument and accessories I established to perpetuate the location of this corner:

December 3, 1980
To mark corner I set a 2" inside diameter, 5' long, flanged bottom, concrete filled, galvanized iron pipe, extending 12" above ground, with 3" brass tablet stamped:
T43N, R6W, R7W, ¼, S31, S36, S1116, 1980.
Blazed and scribed new bearing trees as follows:
Maple 8", N32°W, 56.33 feet.
Maple 6", N35.5°E, 44.04 feet.
Maple 6", S43°E, 33.59 feet.
Maple 7", S72.5°W, 43.94 feet.
Iron sign post, South, 2.0 feet.
Metal BT sign nailed on all bearing trees.



● - Corner monument restored
□ -

Resident witnesses.....

Dated at Phillips Wisconsin, this 30th day of January 19 81.

Signature Terry J. Michek Title Registered Land Surveyor
(County Surveyor, Registered Land Surveyor, or other duly authorized official)

Surveyors Registration No. S-1116

Office of..... County of.....

I hereby certify that the within instrument was filed in this office for record on the..... day of..... 19....., and was filed in Book No..... Page No..... of County Records.

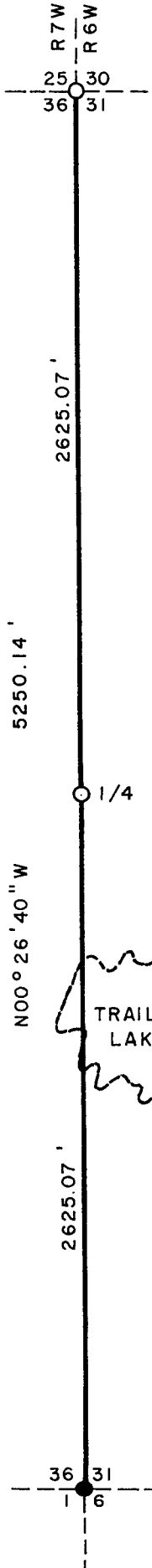
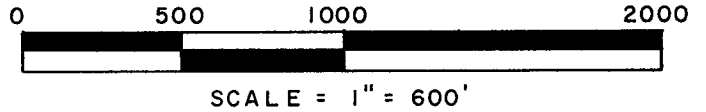
Signature..... Title.....

Township....., Range....., Section....., Index No....., Page No.....

#310

PLAT OF SURVEY U.S. Government Land

WEST LINE SECTION 31, TOWNSHIP 43 NORTH, RANGE 6 WEST, FOURTH PRINCIPAL MERIDIAN
COUNTY OF BAYFIELD, STATE OF WISCONSIN



CSM # 000332

338403

REGISTER'S OFFICE } SS.
 Bayfield County, Wis. }
 RECORDED AT 1:50 P. M.
 ON MAR 19 1981 IN
 Vol. 3 of CSM Pages 166-168

Otto Korpela
 REGISTER OF DEEDS

TRUE SOLAR BEARINGS



West Line

31-43-6

LEGEND

- = CORNER MONUMENTED. SET A 2 INCH INSIDE DIAMETER, 5 FOOT LONG, CONCRETE FILLED, GALVANIZED IRON PIPE CAPPED WITH A 3 INCH DIAMETER BRASS TABLET STAMPED TO IDENTIFY CORNER.
- = RECOVERED 2 INCH DIAMETER, 48 INCH LONG IRON PIPE CAPPED WITH A 2 3/4 INCH DIAMETER IRON CAP STAMPED TO IDENTIFY CORNER.
- = LINE MARKED BY BLAZED AND PAINTED TREES AND IRON SIGN POSTS SET IN LINE.
- - - = APPROXIMATE SHORELINE OF LAKE DRAWN FROM 1979 AERIAL PHOTOGRAPHY.
- U.S.A. = U.S. GOVERNMENT LAND.

U.S.A.

U.S.A.

166

SURVEY NOTES

This survey was made by Elk River Survey Company, Inc., of Phillips, Wisconsin, for the purpose of recovering, restoring and perpetuating the corners established by the original Government survey and to establish and mark the boundary line of U.S. Government land on the West line of Section 31, T43N, R6W, Fourth Principal Meridian, Bayfield County, Wisconsin, as shown on the plat herewith.

The original Government survey of the west township line was made in 1857.

Bearings between corner positions are true bearings by reference to a solar observation. All distances shown hereon are in feet and tenths of feet. The control traverse was measured by use of electronic distance measuring equipment. Corners recovered and restored by this survey are marked by the monument described in the map legend. Each monumented corner position is referenced to blazed and scribed bearing trees and described reference objects.

CORNERS RECOVERED1. Corner to Sections 25, 30, 31 & 36.

Corner recovered marked by a 10" cedar corner fence post painted white on the north and south side. I found the White Pine stumps marked by Otto Gobler, Sawyer County Surveyor, in November, 1922, as follows:

White Pine Stump	26"	N64 ^o W	27.7 Feet
White Pine Stump	24"	N27 ^o W	47.5 Feet

New Corner References:

Red Oak	10"	N33 ^o W	84.79 Feet
Maple	6"	N57 ^o E	39.76 Feet
Maple	7"	S25 ^o E	25.60 Feet
Maple	7"	S71 ^o W	45.23 Feet
Iron Sign Post		South	2.0 Feet

Placed mound of stone around corner monument.

2. Corner to Sections 1, 6, 31 & 36.

Corner monument recovered in place and as described on Certified Land Corner Restoration Form filed in the Bayfield County records by S-785 in 1963.

CORNERS RESTORED1. Quarter Corner to Sections 31 & 36.

Corner restored by single proportionate measure at mid-point and on line between the northwest corner of Section 31 and the southwest corner of Section 31.

Corner References:

Maple	8"	N32 ^o W	56.33 Feet
Maple	6"	N35.5 ^o E	44.04 Feet
Maple	6"	S43 ^o E	33.59 Feet
Maple	7"	S72.5 ^o W	43.94 Feet
Iron Sign Post		South	2.0 Feet

Corner falls on east slope of hill 275'+- north of logging road.

The field notes and a copy of this plat are on file in the Forest Supervisor's Office at Park Falls, Wisconsin. A copy of this plat is on file in the District Ranger's Office at Hayward, Wisconsin.

SURVEYOR'S AFFIDAVIT

State of Wisconsin)
) ss.
County of Bayfield)

I, Terry J. Michek, Land Surveyor, Elk River Survey Company, Inc., and Registered Land Surveyor in the State of Wisconsin, hereby certify that I have surveyed the West line of Section 31, T43N, R6W, Fourth Principal Meridian, County of Bayfield, State of Wisconsin, in accordance with the rules for the survey of the public lands and with the statutes of the State of Wisconsin. The plat map and survey notes are an accurate representation of the corners recovered and restored.



Terry J. Michek
Land Surveyor, Elk River Survey Company, Inc.
Registered Land Surveyor, State of Wisconsin
Certificate No. S-1116

Date of Survey: 1980-81