

**U.S. PUBLIC LAND SURVEY MONUMENT RECORD**

State of Wisconsin  
 Sawyer County }

I, Daniel K. Pleoger, do hereby certify that on the 28th day of April, 2010, I perpetuated the **South ¼ corner of Section 36, Township 43 North, Range 9 West**, Fourth Principal Meridian, as described hereon;  
 And set a new monument and accessories as described hereon to perpetuate the location of this corner;  
 and that this U.S. Public Land Survey Monument Record is correct to the best of my knowledge and belief.

**Description of original monument and accessories and subsequent restorations:**

Albert C. Stuntz, August, 1855.  
 West between Sections 1 & 36  
 40.00 chs. Set ¼ section post.  
 Hemlock 12 N6W 10 lks. (6.6')  
 Hemlock 12 S8W 26 lks. (17.16')

1 ch. west enter marsh  
 21.50 ch. west leave marsh

**Evidence found and justification for locating corner as shown:**

The Sawyer County Survey Department established a search area for the corner from original calls to the marsh. We found a large down hemlock identified by rotted remains and limb knots. We measured N8°E, 26 links from the base of the down tree and established a temporary corner position. We then searched for the original BT at N6°W, 10 links and found a rotted hemlock stump, bark and roots. We scraped the surface of the ground at the intersection of distances from the hemlock stumps and found a humus filled stake hole tapering to a point 12" below the surface. The post hole was protected by a large rock on the slope. We accepted the found evidence as the original position of the ¼ corner.

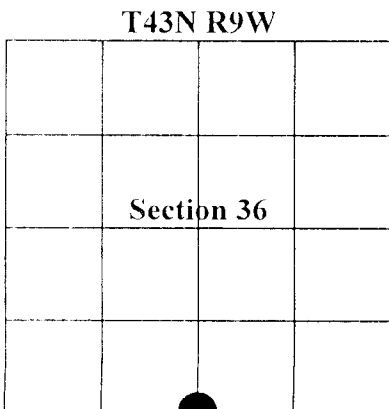
We set a ¾" x 36" aluminum rod with a 3-1/4" aluminum cap flush with the ground in the original stake hole. We made a mound of stone around the new monument.

The corner falls 47 feet east of the edge of the marsh (original 1 chain) on a mixed hardwood slope.

We recovered a ¾" x 60" iron pipe at S23°42'07"E, 116.57'. The pipe may have been set by the Bayfield County Forestry Department.

We referenced the corner as shown on the drawing on the reverse side of this sheet.

See Sawyer County Survey field book 429-1 pages 57 and 58.



Dated at Hayward, Wisconsin, this 19th day of July, 2011.

Signature Daniel K. Pleoger Title: County Surveyor  
 Surveyors Registration No. 1537  
 Office of County Surveyor in Sawyer County

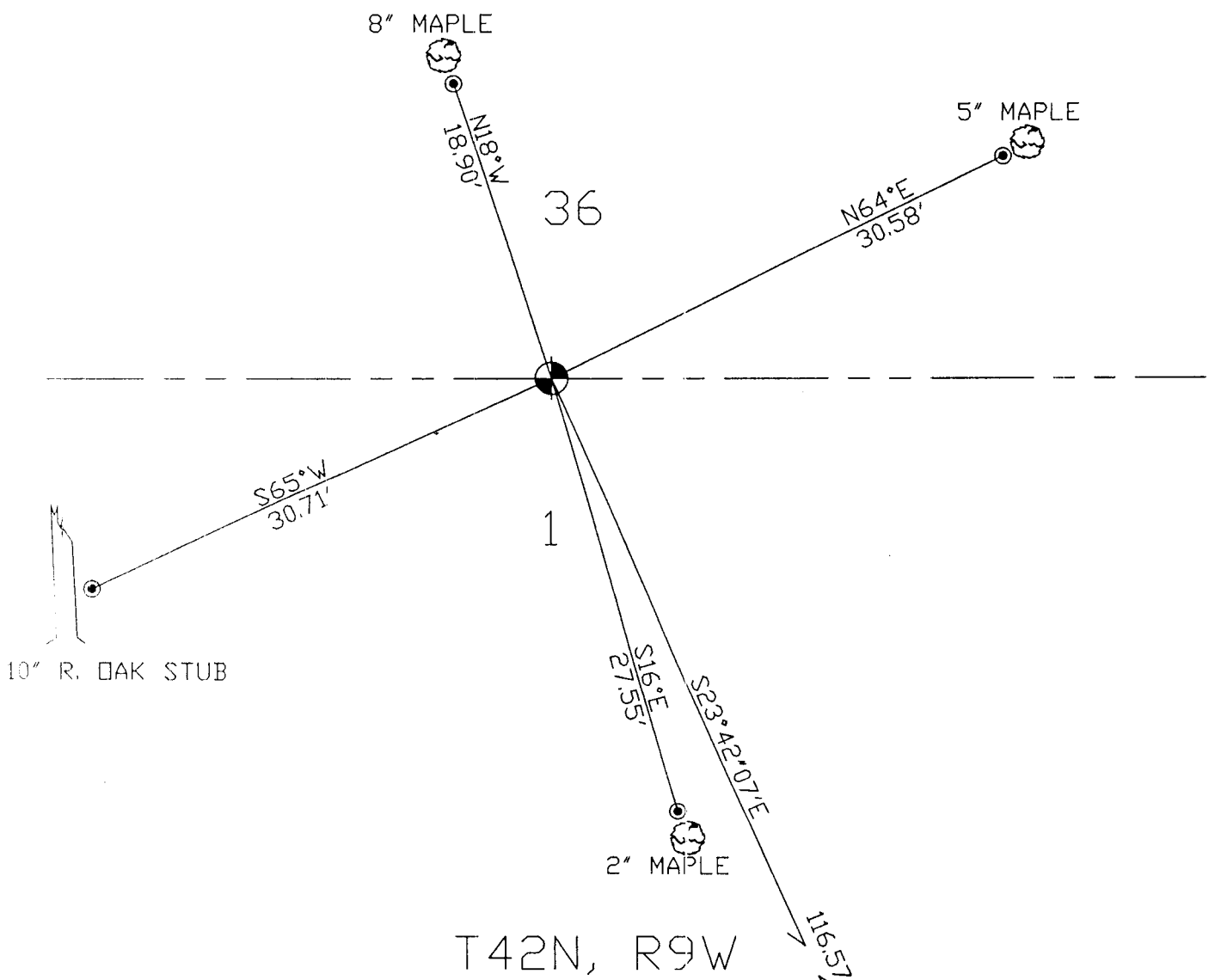
I hereby certify that the within instrument was filed in this office for record on the 21st day of July, 2011..

Signature \_\_\_\_\_ Title: Deputy County Surveyor

Index No. Z-23

T43N, R9W

SCALE: 1" = 10'



● SET 3/4" x 36" AL. MON W/ 3-1/4" CAP FLUSH WITH GROUND IN A MOUND OF STONE

● SET 5/8" X 24" IRON ROD W/ YELLOW CAP FLUSH

FD, 3/4" IRON PIPE