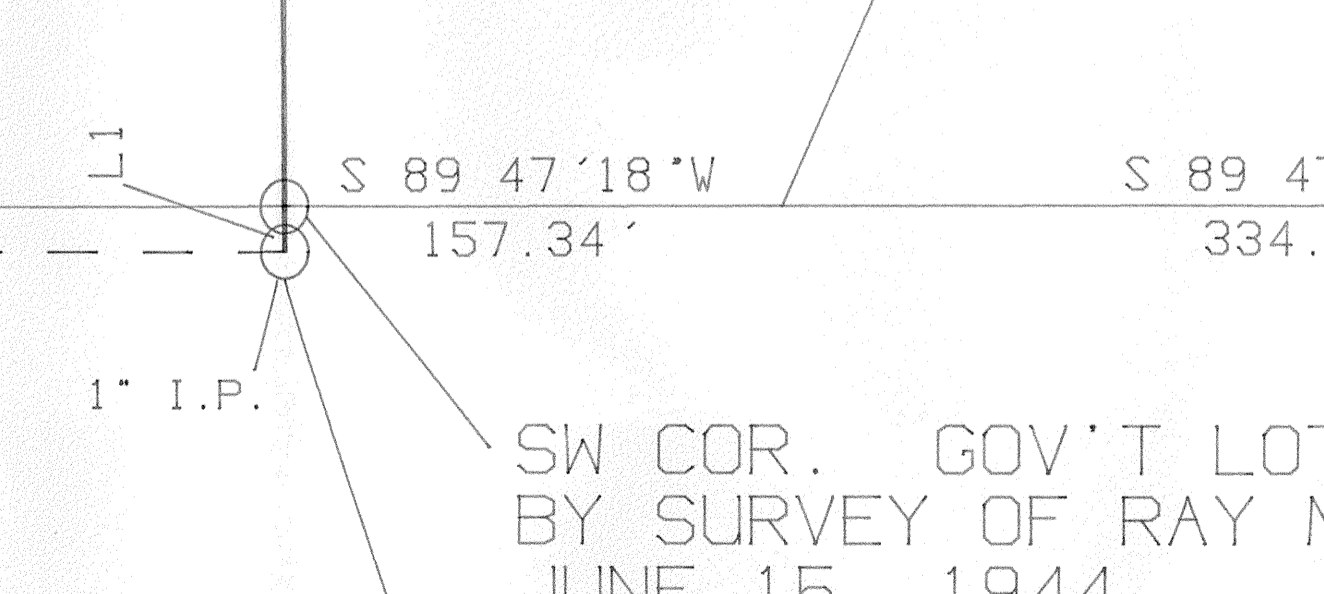
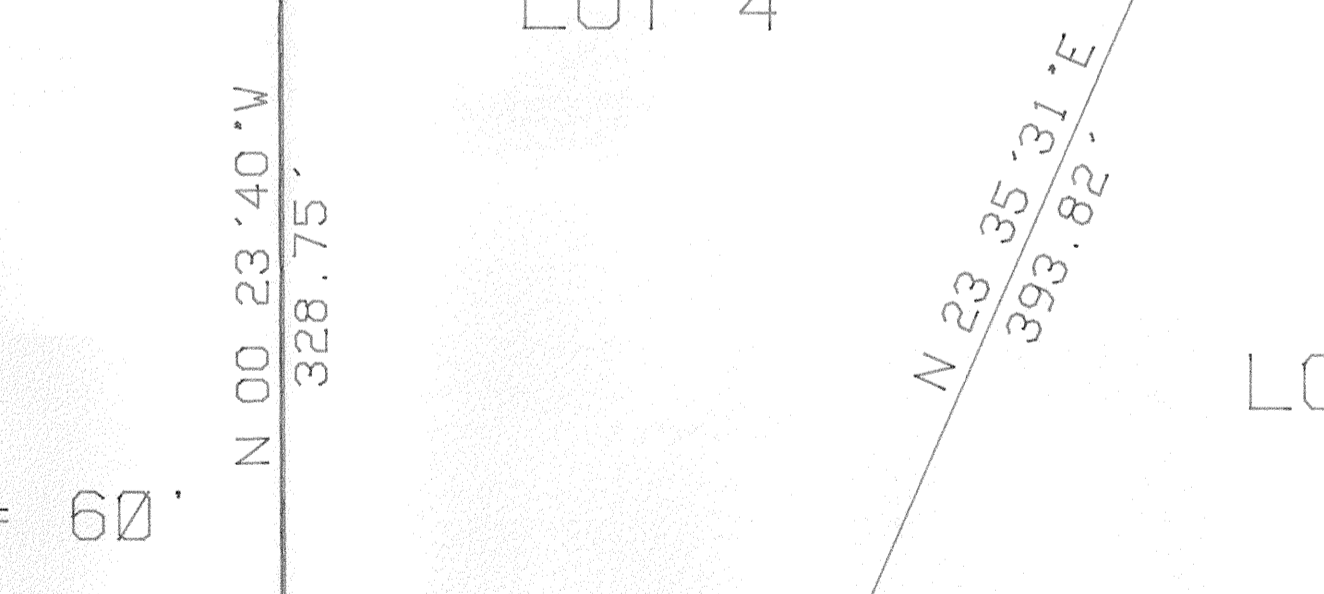
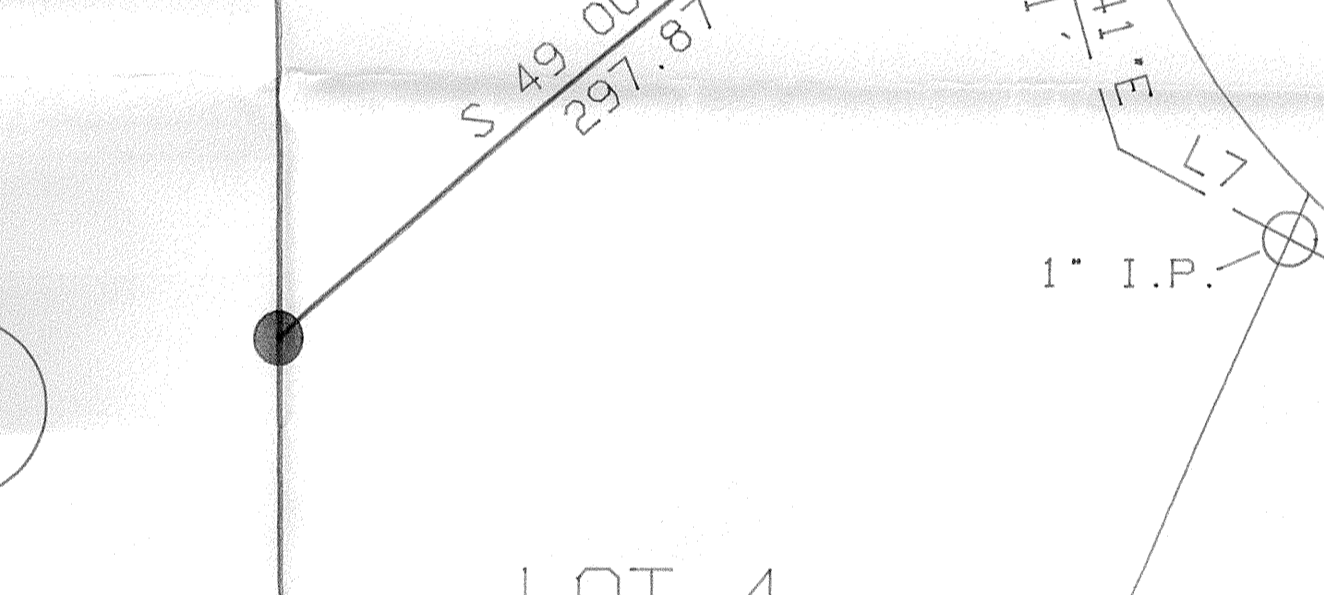
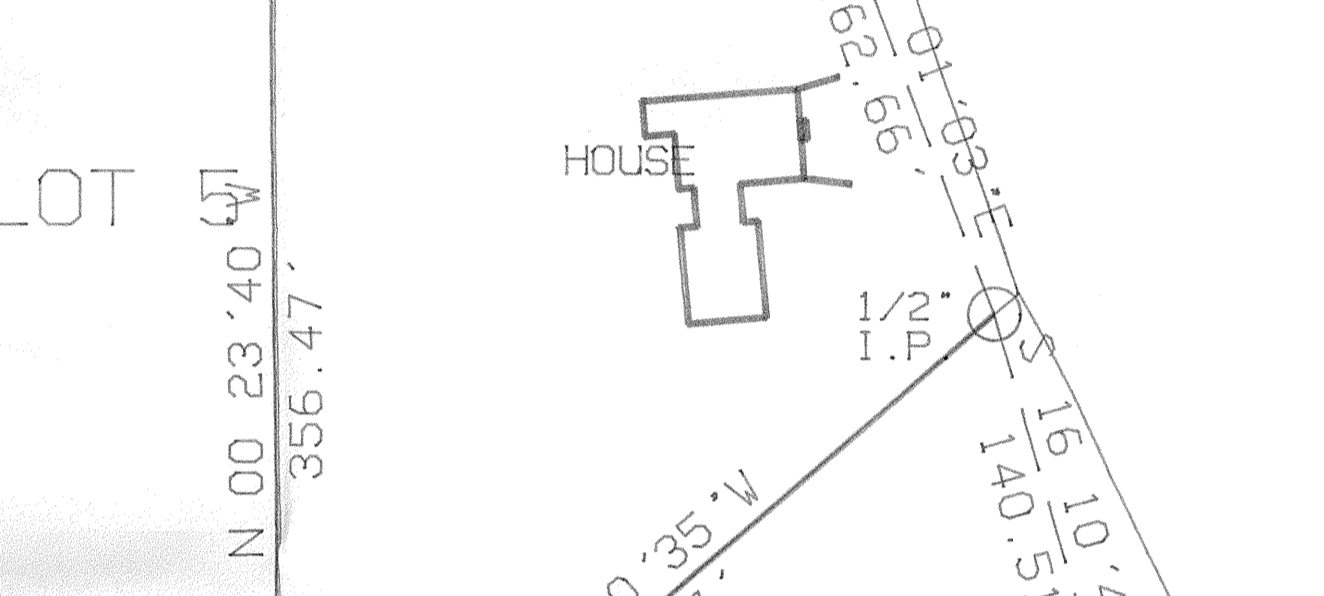
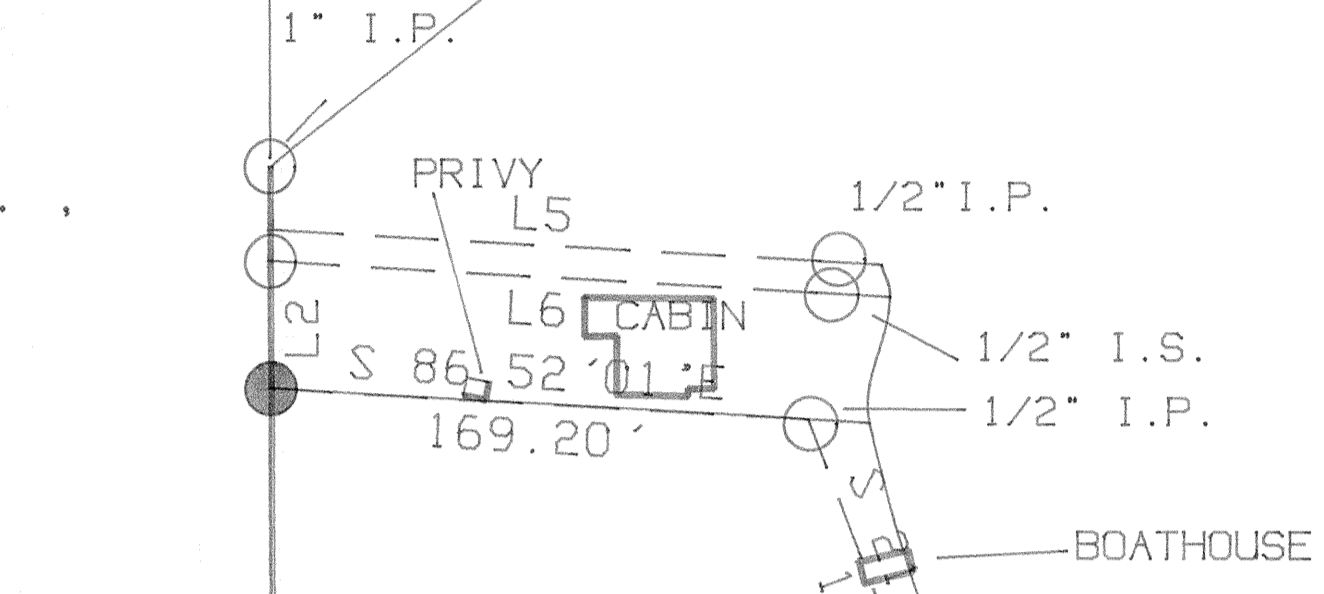
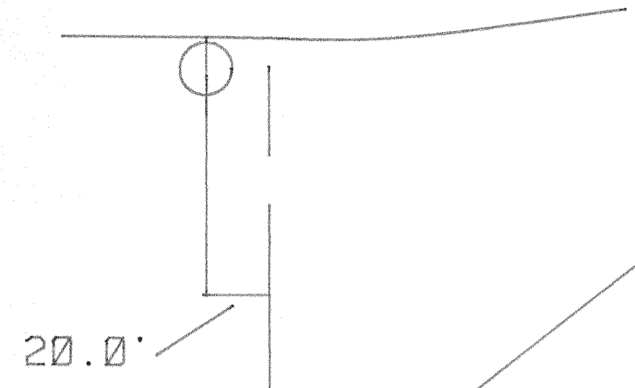


# PLAT OF SURVEY

LOCATED IN GOV'T LOT 3,  
SECTION 28, T.47N., R.8W.,  
BAYFIELD CTY., WISC.

BUSKY BAY



LAKE  
MILLICENT

GOV'T LOT 4

NORTH

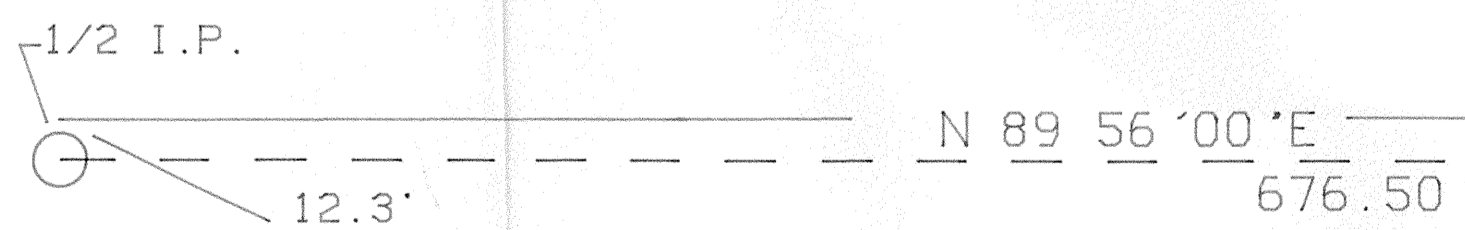
LOT 4

LOT 3

LOT 3

LINE	BEARING	DISTANCE
L 1	N 00 23'40"W	14.05'
L 2	N 00 23'40"W	40.07'
L 3	N 00 23'41"W	10.03'
L 4	N 00 23'39"W	19.82'
L 5	S 86 53'09"E	173.20'
L 6	S 86 52'18"E	171.91'
L 7	S 62 31'28"E	60.00'

SCALE: 1" = 60'



N 89 56'00"E  
676.50'

S 89 47'18"W  
157.34'

S 89 47'18"W  
334.69'

3/4" I.S.

SW COR. GOV'T LOT 3  
BY SURVEY OF RAY MATSON  
JUNE 15, 1944

SE COR. GOV'T LOT 4  
BY SURVEY OF THOMAS NELSON  
OCT. 13, 1964

#1379

GL 3

28-47-8