

4408363400
T R SEC ROW COL

BAYFIELD COUNTY LAND SURVEY MONUMENT RECORD

INSTRUCTIONS: This record shall show the location of the corner and shall include all of the following nine elements (a through i).

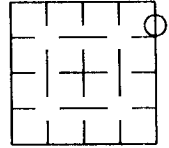
(a) Identify the corner by reference to the U.S. land survey system.
○ = Corner monument restored.

The meander corner on the east line of Section 36, T. 44 N., R. 8 W., in the Town of Drummond, Bayfield County, Wisconsin.

(b) Describe any record evidence, monument evidence, occupational evidence, testimonial evidence or any other material evidence you considered, and whether the monument was found or placed.

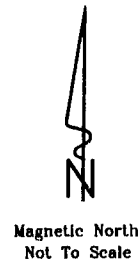
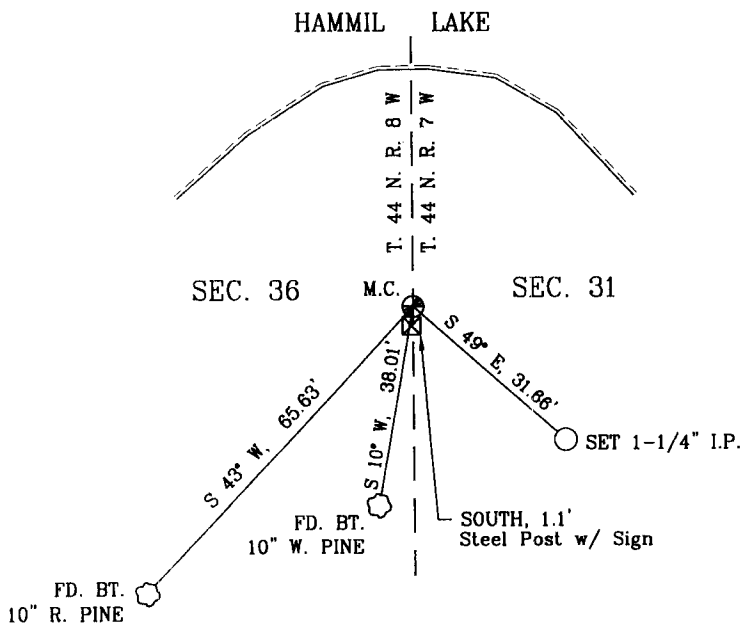
On January 6, 2010, I found a 3" capped iron pipe at the meander corner on the east line of Section 36. I also found the bearing trees as noted on the map of survey by R. Erickson, RLS No. 1897. Corner falls 40'± south of the water's edge of Hammil Lake.

SECTION 36



BASE STATION: CABLE GPS LATITUDE: 46°11'53.94714" N LONGITUDE: 91°14'50.90947" W
FOUND CORNER: LATITUDE: 46°15'18.93188" N LONGITUDE: 91°18'07.22100" W

(c & d) Show a plan view drawing depicting the relevant monuments and reference ties which is sufficient in detail to enable accurate relocation of the corner monument if the corner is disturbed. Indicate north.
Witnessed corner as follows: Bearing trees are blazed. Distances are measured to a nail in the tree.



(e) Describe any material discrepancy between the location of the corner as restored or re-established and the location of that corner as previously restored or re-established by distance and direction. Show the discrepancy on the plan view drawing under (d) above. Show the distances between the corner as previously restored or re-established and (1) the corner as restored or re-established, and (2) to at least 2 of the witness monuments shown on the drawing in (d), above. N/A

(f) Was the corner restored through acceptance of (1) an obliterated evidence location, or, (2) a found perpetuated location? A Found Perpetuated Location

(g & h) Was the corner re-established through lost corner proportionate methods? If so, show the method, including the directions and distances to other public land survey corners used as evidence or or used for proportioning in determining the corner location. N/A

(i) I, Larry T. Nelson, Registration # 276, certify that the corner location shown on this record was determined by me or under my direction and control and that this U. S. Public Land Survey Monument Record is correct to the best of my knowledge and belief.

LARRY T. NELSON
Registration # 276
ASHLAND, WI
Signature: [Handwritten Signature]
Date: 12/23/10
LAND SURVEYOR

SECTION 36, T. 44 N., R. 8 W.

NELSON SURVEYING INCORPORATED
101 W. MAIN STREET SUITE 207
ASHLAND, WISCONSIN 54806
(715) 682-2692
FAX: (715) 682-5100
SURVEYING NORTHERN WISCONSIN SINCE 1954
WWW.NELSONSURVEYING.COM

Otto Korpela

REGISTER OF DEEDS

'01 FEB 1 AM 9 34

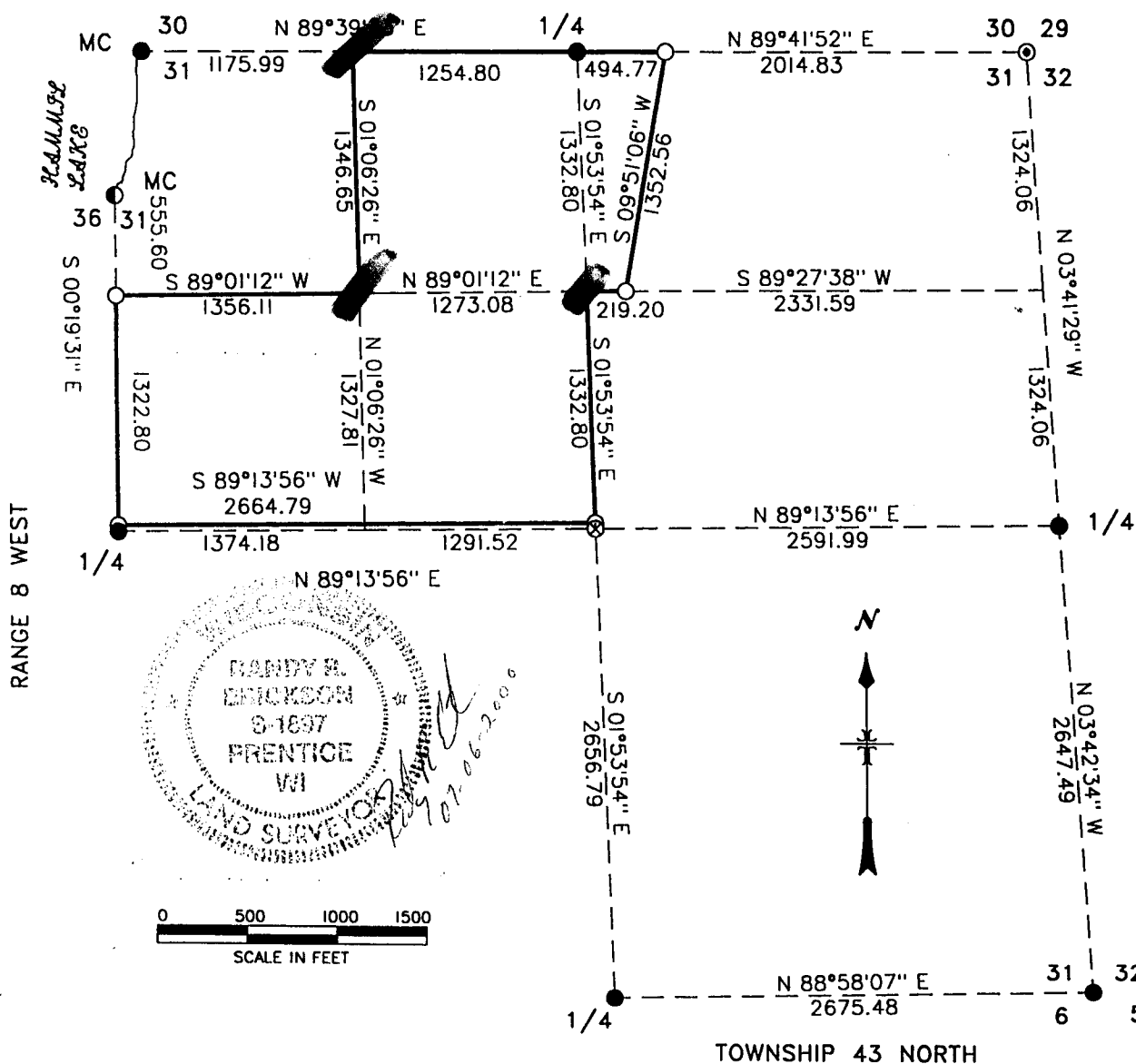
MAP OF SURVEY

REGISTER'S OFFICE/S.S.
BAYFIELD COUNTY, WIS.

U.S. GOVERNMENT LANDS BEING:

SECTION 31: THE NE 1/4 NW 1/4, THE NW 1/4 NE 1/4 EXCEPT 18.87 ACRES EAST OF OLD STATE HWY #24, AND THE SOUTH 1/2 NW 1/4 EXCEPT THE SOUTH 2 RODS.

ALL IN TOWNSHIP 44 NORTH, RANGE 7 WEST, BAYFIELD COUNTY, WISCONSIN.

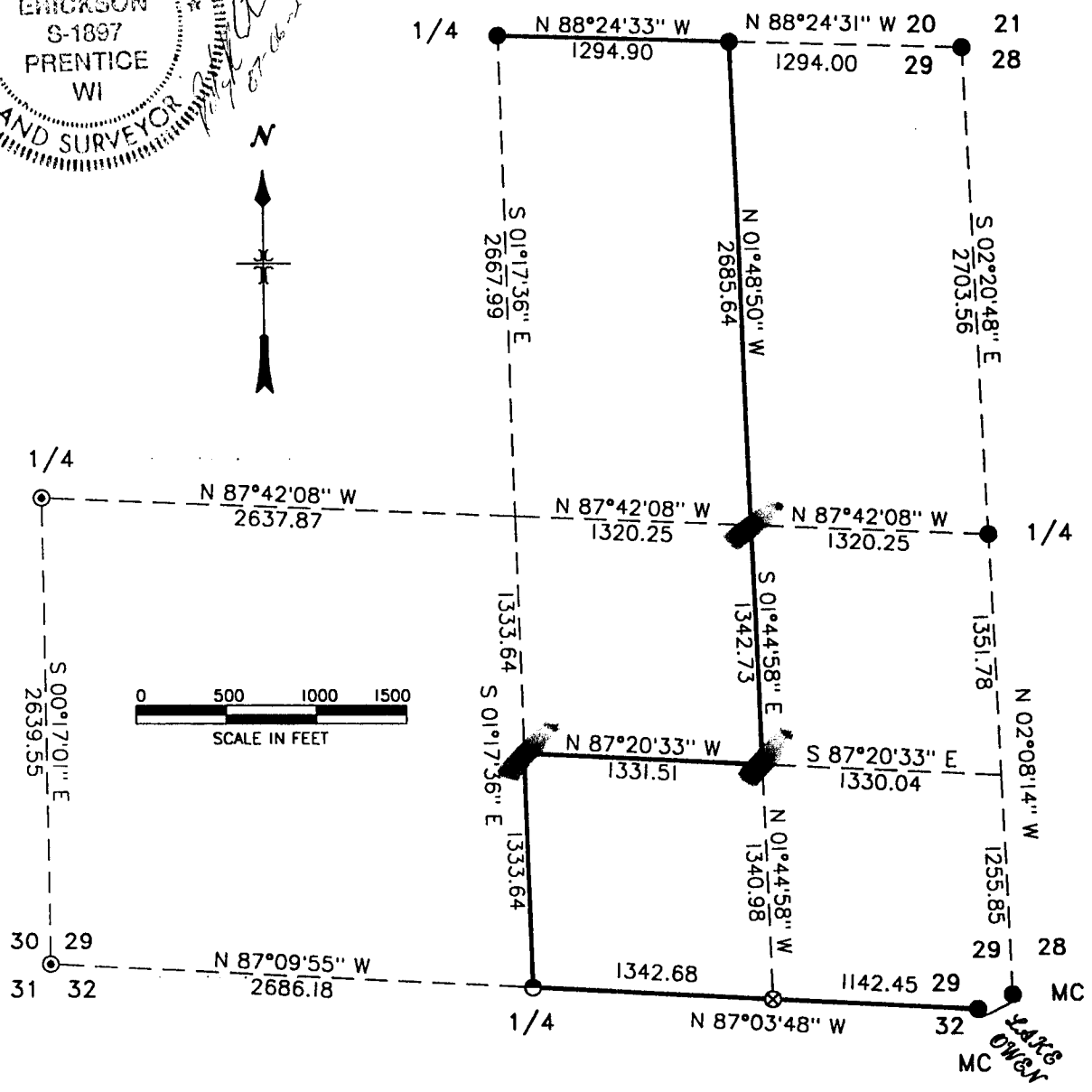
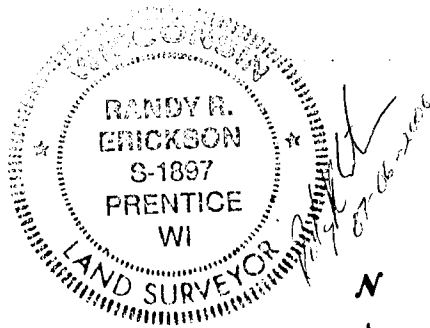


LEGEND

- RECOVERED MONUMENT PREVIOUSLY SET TO U.S.F.S. SPECS.
- ⊙ RECOVERED MONUMENT SET TO COUNTY SPECS BY RLS #1007.
- ⊗ RECOVERED MONUMENT SET BY RLS #1029 PREVIOUS SURVEY.
- RECOVERED MONUMENT SHOWN AS FOUND BY SEVERAL PRIOR SURVEYS.
- SET A 2" x 36" IRON PIPE WITH BRASS CAP.
- ⊙ SET A 2" x 36" ALUMINUM PIPE MONUMENT WITH ALUMINUM CAP.
- RESET 3" CAPPED IRON PIPE FROM 1917 FORSS SURVEY.
- LINE MARKED TO U.S.F.S. STANDARDS.

MAP OF SURVEY

U.S. GOVERNMENT LANDS BEING:
 SECTION 29: THE SW 1/4 SE 1/4, THE EAST 1/2 SE 1/4,
 AND THE EAST 1/2 NE 1/4.
 ALL IN TOWNSHIP 44 NORTH, RANGE 7 WEST, BAYFIELD
 COUNTY, WISCONSIN.



LEGEND

- RECOVERED MONUMENT PREVIOUSLY SET TO U.S.F.S. SPECS.
- ⊙ RECOVERED MONUMENT SET TO COUNTY SPECS BY RLS #1007.
- ⊗ RECOVERED MONUMENT SET BY RLS #1029 PREVIOUS SURVEY.
- ⊙ RECOVERED MONUMENT SHOWN AS FOUND BY SEVERAL PRIOR SURVEYS.
- SET A 2" x 36" IRON PIPE WITH BRASS CAP.
- ⊙ SET A 2" x 36" ALUMINUM PIPE MONUMENT WITH ALUMINUM CAP.
- ⊙ RESET 3" CAPPED IRON PIPE FROM 1917 FORSS SURVEY.
- LINE MARKED TO U.S.F.S. STANDARDS.

SURVEY NOTES SECTIONS 29 AND 31
TOWNSHIP 44 NORTH, RANGE 7 WEST

THIS SURVEY WAS MADE AT THE REQUEST OF THE WASHBURN DISTRICT RANGER FOR THE PURPOSE OF RECOVERING, RESTORING, ESTABLISHING, PERPETUATING AND MARKING CORNERS AND BOUNDARIES OF U.S. GOVERNMENT LANDS ON THE PERIMETER AND WITHIN SECTIONS 29 AND 31, TOWN 44 NORTH, RANGE 7 WEST, BAYFIELD COUNTY, WISCONSIN.

THE ORIGINAL GOVERNMENT SURVEY OF THE RANGE LINE BETWEEN RANGES 7 AND 8 WAS DONE IN 1856 BY DEPUTY SURVEYOR ALBERT STUNTZ. THE SECTION LINES WERE SURVEYED IN 1858 BY DEPUTY SURVEYOR DANIEL NORTON. COUNTY SURVEYOR JON FORSS RETRACED THE EXTERIOR OF SECTIONS 29 AND 31 IN 1915 AND 1916. SEVERAL SURVEYS OF RECORD WERE MADE IN SECTIONS 29 AND 31 BY DUANE MARTEN, RLS #1029. A SURVEY ALONG THE WEST 1/2 OF THE NORTH LINE OF SECTION 31 WAS MADE IN 1998 BY JEFF MULOCK, RLS #2319. A SURVEY ALONG THE EAST 1/2 OF THE NORTH LINE OF SECTION 29 WAS DONE IN 1985 BY JOHN SHCULKE, RLS #1665. IN 1977 DAVE TROWBRIDGE, RLS #1180 SURVEYED THE WEST 1/2 OF THE SOUTH LINE OF SECTION 29 AND THE NORTH 1/2 OF THE EAST LINE OF SECTION 31. ALSO FOUND SEVERAL PIPES NEAR CORNERS WHICH I FOUND NO RECORDS OF.

SURVEY WAS MADE USING AN ELECTRONIC TOTAL STATION INSTRUMENT WITH AN ELECTRONIC DATA COLLECTOR. BEARINGS SHOWN ON MAP ARE TRUE BASED ON 1977 TROWBRIDGE PLAT ALONG COMMON LINES WITH THIS SURVEY. TRAVERSE LOOPS HAD AN ERROR OF CLOSURE BETTER THAN 1:5000.

BEARING TREES ARE BLAZED, SCRIBED, AND PAINTED WITH RED PAINT. MEASUREMENTS TO BEARING TREES ARE TO ALUMINUM NAILS IN THE SIDE OF TREE ABOVE CENTER OF ROOT CROWN.

ENCROACHMENTS FOUND ON NATIONAL FOREST LANDS: ALONG THE EAST LINE OF THE SE NW OF SECTION 31 IS A LARGE PILE OF JUNK. ALONG THE SOUTH LINE OF SE SE SECTION 29 IS A SATELLITE DISH, A ROCK WALL AND WOOD CHIPS, AND A DRIVE WAY. ALSO FOUND 2 PERMANENT DEER STANDS. ONE IN THE SE SE SECTION 29, AND ONE IN THE NE NE OF SECTION 29.

SURVEY WAS MADE IN MARCH, APRIL, AND MAY OF 2000.

CORNERS RECOVERED

1. NORTH QUARTER CORNER SECTION 29, T 44 N, R 7 W.
RECOVERED MONUMENT AS DESCRIBED ON DOC. #363300, BOOK 2, PG. 66 OF CERTIFIED LAND CORNER RESTORATIONS, FILED BAYFIELD CO. REGISTER OF DEEDS 1986 BY RLS #1665. SET A STEEL SIGN POST EAST 0.9 FEET.
2. EAST 1/16 CORNER SECTIONS 20 AND 29, T 44 N, R 7 W.
RECOVERED MONUMENT AS DESCRIBED ON DOC. #363297, BOOK 2, PG. 63 OF CERTIFIED LAND CORNER RESTORATIONS, FILED BAYFIELD CO. REGISTER OF DEEDS 1986 BY RLS #1665.
3. CORNER OF SECTIONS 20-21-28-29, T 44 N, R 7 W.
RECOVERED MONUMENT AS DESCRIBED ON CERTIFIED LAND CORNER RESTORATION FORM FILE IN BAYFIELD COUNTY RECORDS MARCH 2, 1961 BY RLS #212.
4. QUARTER CORNER SECTIONS 29 AND 30, T 44 N, R 7 W.
RECOVERED MONUMENT AS DESCRIBED ON DOC. #315391, VOL. 1, PG. 244, CERTIFIED LAND CORNER RESTORATIONS FILED, BAYFIELD CO. REGISTER OF DEEDS 1977 BY RLS #1007. WHITE PINE BT SE IS NOW A 30 FOOT SNAG. CULVERT REFERENCED IS GONE. MARKED NEW BEARING TREES:
W. PINE 6" WEST 44.45 FEET
RED PINE 12" S 41° E 85.20 FEET
W. PINE 11" N 86° E 73.40 FEET
STEEL SIGN POST WEST 29.25 FEET

5. QUARTER CORNER SECTIONS 28 AND 29, T 44 N, R 7 W.
RECOVERED MONUMENT AS DESCRIBED ON DOC. #293966, VOL. 1, PG. 75, CERTIFIED LAND CORNER RESTORATIONS, FILED BAYFIELD CO. REGISTER OF DEEDS IN 1974 BY RLS #785. BALSAM BT IS GONE.
6. MEANDER CORNER BETWEEN SECTIONS 30 AND 31, EAST SIDE HAMMIL LAKE, T 44 N, R 7 W.
RECOVERED MONUMENT AS DESCRIBED ON DOC. #293963, VOL. 1, PG. 72, CERTIFIED LAND CORNER RESTORATIONS FILED BAYFIELD CO. REGISTER OF DEEDS IN 1974 BY RLS #785.
7. QUARTER CORNER SECTIONS 30 AND 31, T 44 N, R 7 W.
RECOVERED MONUMENT AS DESCRIBED ON DOC. #269984, VOL. 1, PG. 308 OF CERTIFIED SURVEY MAPS, BAYFIELD CO. RECORDS, FILED IN 1970 BY RLS #785.
8. CORNER OF SECTIONS 29-30-31-32, T 44 N, R 7 W.
RECOVERED MONUMENT AS DESCRIBED ON DOC. #315392, VOL. 1, PG. 245 CERTIFIED LAND CORNER RESTORATIONS, FILED BAYFIELD CO. REGISTER OF DEEDS IN 1977 BY RLS #1007. NEW ACCESSORIES:
STEEL R.O.W. POST S 55° E 52.6 FEET
STEEL R.O.W. POST N 72° W 115.2 FEET
STEEL R.O.W. POST S 74° W 110.9 FEET
9. QUARTER CORNER SECTIONS 29 AND 32, T 44 N, R 7 W.
RECOVERED MONUMENT AS DESCRIBED ON DOC. #439231, VOL. 3, PG. 278, CERTIFIED LAND CORNER RESTORATIONS, FILED BAYFIELD CO. REGISTER OF DEEDS IN 1998 BY RLS #1029.
10. MEANDER CORNER BETWEEN SECTIONS 29 AND 32 WEST SIDE OF OWEN LAKE, T 44 N, R 7 W.
RECOVERED MONUMENT AS DESCRIBED ON DOC. #269994, VOL. 1 PG. 318, CERTIFIED SURVEY MAPS, BAYFIELD COUNTY RECORDS, FILED IN 1970 BY RLS #785.
11. MEANDER CORNER BETWEEN SECTIONS 28 AND 29 NORTH SIDE OF LAKE OWEN, T 44 N, R 7 W.
RECOVERED MONUMENT AS DESCRIBED ON DOC. #269976, VOL. 1, PG. 300, CERTIFIED SURVEY MAPS, BAYFIELD COUNTY RECORDS, FILED IN 1970 BY RLS #785.
12. WEST QUARTER CORNER SECTION 31, T 44 N, R 7 W.
RECOVERED MONUMENT AS DESCRIBED ON DOC. #270005, VOL. 1, PG. 329, CERTIFIED SURVEY MAPS, BAYFIELD COUNTY RECORDS, FILED IN 1970 BY RLS #785. MARKED NEW BT: MAPLE 6" N 58° W 8.96 FEET. 1970 W. BIRCH BT IS A DEAD SNAG.
13. QUARTER CORNER SECTIONS 31 AND 32, T 44 N, R 7 W.
RECOVERED MONUMENT AS DESCRIBED ON DOC. #293962, VOL. 1, PG. 71, CERTIFIED LAND CORNER RESTORATIONS, FILED BAYFIELD CO. REGISTER OF DEEDS IN 1974 BY RLS #785.
14. SOUTH QUARTER CORNER SECTION 31, T 44 N, R 7 W.
RECOVERED MONUMENT AS DESCRIBED ON DOC. #293972, VOL. 1, PG. 81, CERTIFIED LAND CORNER RESTORATIONS, FILED BAYFIELD CO. REGISTER OF DEEDS IN 1974 BY RLS #785.
15. SOUTHEAST CORNER SECTION 31, T 44 N, R 7 W.
RECOVERED MONUMENT SET BY JON FORSS IN 1916. BAYFIELD COUNTY RECORD, DOC. #82036a, VOL. 110, PAGES 16-123 MISC. RECORDS, FILED IN 1921. FOUND POST WITH LOCATION TAG FROM 1931 1.1 FEET WEST. MARKED BEARING TREES:
W. PINE 11" S 80° W 17.62 FEET
OAK 7" N 49° E 14.80 FEET
MAPLE 5" N 46° W 12.25 FEET
STEEL SIGN POST EAST 0.8 FEET

16. NORTH 1/16 CORNER SEC. 31, T44N, R7W, & SEC. 36, T44N, R8W.
RECOVERED A 1 1/2" IRON PIPE WHICH ACCORDING TO FRED STOEBE
HAD BEEN SET BY HIS FATHER TO REPLACE JON FORSS' WOOD STAKE
WHICH WAS SET IN 1916. FRED STOEBE FIRST CAME TO THE AREA IN
1917 WITH HIS FATHER AND MOTHER. I REPLACED THE PIPE WITH A
2" x 36" GALVANIZED IRON PIPE WITH A BRASS CAP STAMPED TO
IDENTIFY THE CORNER. MONUMENT EXTENDS 8" ABOVE THE GROUND.
I SET 1 1/2" PIPE ALONG SIDE NEW MONUMENT. MARKED BTS:

MAPLE	7"	N 44° W	34.21 FEET
MAPLE	5"	S 84° E	41.25 FEET
MAPLE	7"	S 18° E	23.42 FEET
STEEL SIGN POST		SOUTH	0.5 FEET

CORNER FALLS 6 FEET EAST OF DRIVEWAY CENTER LINE.

17. EAST 1/16 CORNER SECTIONS 29 AND 32, T 44 N, R 7 W.
RECOVERED 1" PIPE AS SHOWN ON BAYFIELD COUNTY CSM #000520,
VOL. 4, PAGE 15, FILED IN 1984 BY RLS #1029.

18. CENTER QUARTER CORNER SECTION 31, T 44 N, R 7 W.
RECOVERED A 1 1/4" IRON PIPE WHICH I BELIEVE TO HAVE BEEN SET
BY RLS #1029.

CORNER RESTORED

I. MEANDER CORNER BETWEEN SECTIONS 31, T 44 N, R 7 W & SECTION
36, T 44 N, R 8 W. SOUTH END OF HAMMIL LAKE.
RESTORED CORNER BY EXTENDING STRAIGHT LINE FROM WEST 1/4
CORNER OF SECTION 31 THROUGH NORTH 1/16 CORNER AT RECORD
DISTANCE NORTH OF 1/16 CORNER. RESET FORSS' MONUMENT WHICH
I FOUND LAYING NEARBY. FRED STOEBE TESTIFIED THE LOCATION
WAS IN APPROXIMATELY THE POSITION HE COULD BEST REMEMBER IT
BEING. MONUMENT IS A 2 1/2" x 40 IRON PIPE WITH A 3" IRON
CAP STAMPED TO IDENTIFY THE CORNER. MONUMENT EXTENDS 12"
ABOVE THE GROUND. MARKED BEARING TREES:

W. PINE	8"	S 10° W	38.04 FEET
RED PINE	6"	S 43° W	65.72 FEET
STEEL SIGN POST		SOUTH	1.1 FEET

MOUND OF STONE PLACED AROUND BASE OF MONUMENT. MONUMENT IS
8 FEET WEST OF DOCK.

CORNERS ESTABLISHED

CENTER EAST 1/16 CORNER, SECTION 29, T 44 N, R 7 W.
ESTABLISHED CORNER MID POINT ON LINE BETWEEN THE CENTER 1/4
AND EAST 1/4 CORNERS OF SECTION 29. SET A 2" x 36" ALUMINUM
PIPE MONUMENT WITH A 3" ALUMINUM CAP STAMPED TO IDENTIFY THE
CORNER. MONUMENT EXTENDS 7" ABOVE GROUND. MARKED BTS:

W. PINE	8"	N 01° W	64.70 FEET
W. PINE	7"	EAST	27.45 FEET
W. PINE	4"	S 48° E	38.45 FEET
STEEL SIGN POST		NORTH	0.6 FEET

FOUND 2" PIPE S 85° 13.45 FEET.

CENTER SOUTH 1/16 CORNER SECTION 29, T 44 N, R 7 W.
ESTABLISHED CORNER MID POINT ON LINE BETWEEN THE CENTER 1/4
AND SOUTH 1/4 CORNERS OF SECTION 29. SET A 2" x 36"
GALVANIZED IRON PIPE WITH A 3" BRASS TABLET STAMPED TO
IDENTIFY THE CORNER. MONUMENT EXTENDS 8" ABOVE THE GROUND.
MARKED BEARING TREES:

W. PINE	4"	N 88° E	10.63 FEET
MAPLE	7"	S 01° W	41.63 FEET
OAK	10"	N 11° W	14.16 FEET
STEEL SIGN POST		SOUTH	0.5 FEET

FOUND A 2" IRON PIPE 0.2 FEET SOUTH OF CORNER. CORNER FALLS
62 FEET WEST OF FOREST ROAD #215 CENTER LINE.

SOUTH EAST 1/16 CORNER SECTION 29, T 44 N, R 7 W.
 ESTABLISHED CORNER AT INTERSECTION OF STRAIGHT LINES BETWEEN
 OPPOSING 1/16 CORNERS ON THE PERIMETER OF THE SOUTHEAST 1/4
 OF SECTION 29. SET A 2" x 36" ALUMINUM PIPE MONUMENT WITH
 AN ALUMINUM CAP STAMPED TO IDENTIFY THE CORNER. MONUMENT
 EXTENDS 8" ABOVE THE GROUND. MARKED BEARING TREES:

W. PINE	10"	S 15° E	65.39 FEET
W. PINE	17"	S 52° W	63.55 FEET
W. PINE	13"	N 63° W	59.87 FEET
STEEL SIGN POST		NORTH	1.4 FEET

WEST 1/16 CORNER SECTIONS 30 AND 31, T 44 N, R 7 W.
 ESTABLISHED CORNER ON LINE BETWEEN THE NORTH 1/4 CORNER OF
 SECTION 31 AND THE MEANDER CORNER BETWEEN SECTIONS 30 AND 31
 ON EAST SIDE OF HAMMIL LAKE AT A DISTANCE WEST OF THE NORTH

1/4 CORNER EQUAL TO THE "40s" EAST OF THE NORTH 1/4 AS
 SHOWN ON JON FORSS' 1916 SURVEY. SET A 2" x 36" GALVANIZED
 PIPE WITH A 3" BRASS TABLET STAMPED TO IDENTIFY THE CORNER.
 MONUMENT EXTENDS 8" ABOVE THE GROUND. MARKED BEARING TREES:

OAK	4"	N 18° E	25.56 FEET
W. PINE	13"	S 72° E	32.69 FEET
SPRUCE	9"	S 17° E	36.79 FEET
STEEL SIGN POST		EAST	0.5 FEET

1 1/2" IRON PIPE IS 15.33 FEET EAST, SET BY RLS #1029, 1990.

NORTHWEST 1/16 CORNER SECTION 31, T 44 N, R 7 W.
 ESTABLISHED CORNER AT INTERSECTION OF STRAIGHT LINES BETWEEN
 OPPOSING 1/16 CORNERS ON THE PERIMETER OF THE NORTHWEST 1/4
 OF SECTION 31. SET A 2" x 36" GALVANIZED IRON PIPE WITH A
 3" BRASS TABLET STAMPED TO IDENTIFY THE CORNER. MONUMENT
 EXTENDS 9" ABOVE THE GROUND. MARKED BEARING TREES:

MAPLE	5"	N 88° E	13.53 FEET
MAPLE	7"	S 17° W	16.41 FEET
MAPLE	6"	N 21° E	15.03 FEET
STEEL SIGN POST		WEST	0.8 FEET

CENTER NORTH 1/16 CORNER SECTION 31, T 44 N, R 7 W.
 ESTABLISHED CORNER MID POINT ON LINE BETWEEN THE CENTER 1/4
 AND NORTH 1/4 OF SECTION 31. SET A 2" x 36" GALVANIZED IRON
 PIPE WITH A 3" BRASS TABLET STAMPED TO IDENTIFY THE CORNER.
 MONUMENT EXTENDS 8" ABOVE THE GROUND. FOUND 1 1/4" IRON
 PIPE ALREADY MARKING CORNER POSITION. MARKED BEARING TREES:

MAPLE	6"	N 41° W	20.54 FEET
MAPLE	5"	N 77° E	9.31 FEET
OAK	4"	S 50° W	18.99 FEET
STEEL SIGN POST		SOUTH	1.0 FEET

7. PROPERTY CORNER #1, SECTION 31, T 44 N, R 7 W.
 ESTABLISHED CORNER ON LINE BETWEEN SECTIONS 31 AND 36, 33
 FEET NORTH OF THE COMMON QUARTER CORNER AS PER DEED. SET A
 2" x 36" GALVANIZED IRON PIPE WITH A BRASS TABLET STAMPED TO
 IDENTIFY THE CORNER. MONUMENT EXTENDS 8" ABOVE THE GROUND.
 BEARING TREES ARE SAME TREES AS QUARTER CORNER.

OAK	16"	S 59° E	48.84 FEET
MAPLE	9"	S 06° E	27.72 FEET
MAPLE	6"	S 15° W	29.44 FEET
STEEL SIGN POST		EAST	0.6 FEET

8. PROPERTY CORNER #2, SECTION 31, T 44 N, R 7 W.
 ESTABLISHED CORNER ON NORTH-SOUTH 1/4 LINE OF SECTION 31, 33
 FEET NORTH OF THE CENTER 1/4 CORNER AS PER DEED. SET A
 2" x 36" GALVANIZED IRON PIPE WITH A 3" BRASS TABLET STAMPED
 IDENTIFY THE CORNER. MONUMENT EXTENDS 8" ABOVE THE GROUND.
 MARKED BEARING TREES:

OAK	4"	N 41° W	25.64 FEET
OAK	4"	S 77° E	2.57 FEET
STEEL SIGN POST		WEST	0.5 FEET

9. WITNESS POINT #1, SECTION 31, T 44 N, R 1 W.
 ESTABLISHED W.P. #1 AT INTERSECTION OF ROAD R.O.W. AND NORTH
 1/16 LINE 219.20 FEET EAST OF THE CENTER NORTH 1/16 CORNER
 OF SECTION 31. SET A 2" x 36" GALVANIZED IRON PIPE WITH A 3"
 BRASS TABLET STAMPED TO IDENTIFY THE CORNER. MONUMENT EXTENDS
 6" ABOVE THE GROUND. MARKED BEARING TREES:

W. PINE	4"	S 61° W	59.69 FEET
W. PINE	6"	N 65° W	50.15 FEET
STEEL SIGN POST		WEST	0.3 FEET

MONUMENT IS 33 FEET WEST OF CENTER LINE OF FR #365 AND 9
 FEET EAST OF POWER LINE.

10. WITNESS POINT #2, SECTION 31, T 44 N, R 7 W.
 ESTABLISHED W.P. #2 AT INTERSECTION OF NORTH LINE OF SECTION
 31 AND ROAD R.O.W. 494.77 FEET EAST OF THE NORTH 1/4 CORNER
 OF SECTION 31. SET A 2" x 36" GALVANIZED IRON PIPE WITH A
 3" BRASS TABLET STAMPED TO IDENTIFY THE CORNER. MONUMENT
 EXTENDS 6" ABOVE GROUND. MARKED BEARING TREES:

W. PINE	10"	S 73° W	69.09 FEET
MAPLE	4"	N 62° W	52.32 FEET
STEEL SIGN POST		WEST	0.4 FEET

MONUMENT IS 33 FEET WEST OF FR #365 CENTER LINE AND 12 FEET
 EAST OF POWER LINE.

SURVEYORS AFFIDAVIT

STATE OF WISCONSIN)
 COUNTY OF BAYFIELD) SS

I RANDY R. ERICKSON, LAND SURVEYOR FOR THE U.S.D.A. FOREST
 SERVICE AND A REGISTERED LAND SURVEYOR IN THE STATE OF WISCONSIN,
 DO HEREBY CERTIFY THAT I HAVE SURVEYED AND SUBDIVIDED SECTIONS 29
 AND 31, TOWNSHIP 44 NORTH, RANGE 7 WEST, 4TH P.M., BAYFIELD
 COUNTY, WISCONSIN. DURING THIS SURVEY I HAVE COMPLIED WITH THE
 RULES FOR THE DIVISION OF THE PUBLIC LANDS AND APPLICABLE RULES
 OF THE STATE OF WISCONSIN. THE MAP AND ACCOMPANYING NOTES ARE A
 CORRECT AND ACCURATE REPRESENTATION OF THE SURVEY TO THE BEST OF
 MY KNOWLEDGE AND BELIEF.

Randy R. Erickson
 RANDY R. ERICKSON
 WIS. REG. LAND SURVEYOR #1897

07-06-2000
 DATE

CREW:
 RANDY ERICKSON LAND SURVEYOR
 GREG MAYER SURVEYING TECHNICIAN

