

BAYFIELD COUNTY LAND SURVEY MONUMENT RECORD

INSTRUCTIONS: This record shall show the location of the corner and shall include all of the following nine elements (a through i).

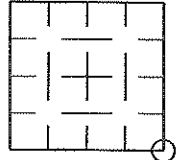
CORNER NUMBER

4506360000
T R SEC ROW COL

(a) Identify the corner by reference to the U.S. land survey system.
○ = Corner monument restored.

The Southeast corner of Section 36, T. 45 N., R. 6 W., in the Town of Grand View, Bayfield County, Wisconsin.

SECTION 36



(b) Describe any record evidence, monument evidence, occupational evidence, testimonial evidence or any other material evidence you considered, and whether the monument was found or placed.

Original corner established in 1857 by Albert C. Stuntz, Government Deputy Surveyor. From notes of Jerod W. Day, Surveyor, as copied by Day from notes of Wm. H. Nettleton. "Set iron pipe. Falls in the centerline of the road."

Elwood L. Olson found iron pipe set by Nettleton. Olson stated the pipe was 2" under road surface and tipped over. Pipe is a 3 inch dia., 36 inch long galvanized iron pipe with a 5 inch dia. galvanized iron cap, stamped accordingly. Olson witnessed the same.

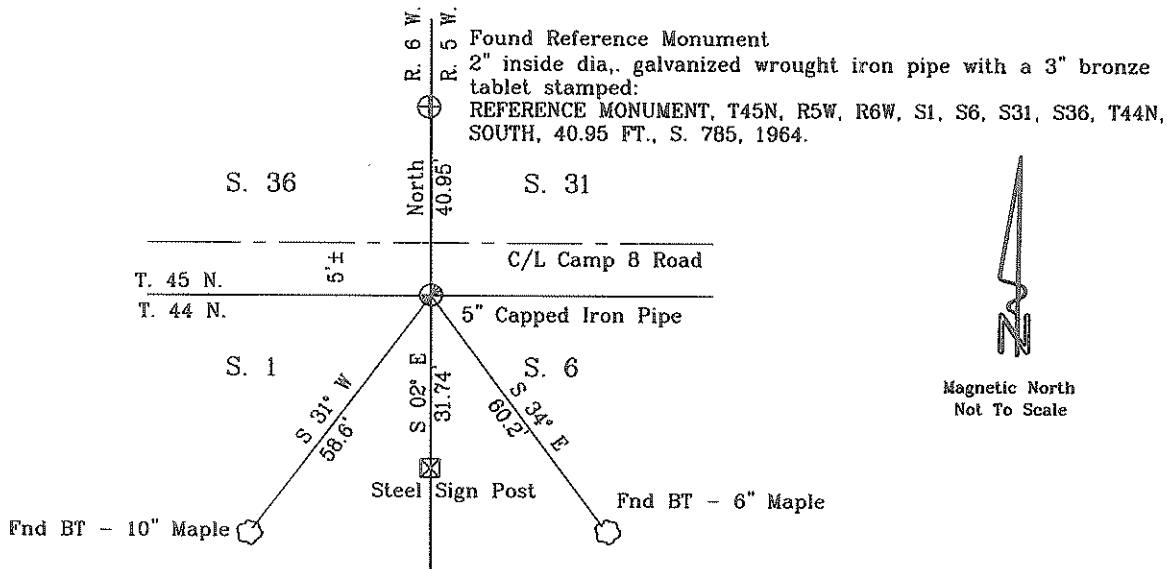
On October 17, 2011, I found a 5" capped iron pipe at the southeast corner of Section 36. Corner falls 5'± north of the centerline of Camp 8 Road and is 0.3'± below roads surface. I also found witnesses referenced on Olson's CLCR sheet. Refer to CLCR sheet filed at the Bayfield County Land Records Office for more information.

BASE STATION: GV SANDPIT LATITUDE: 46°19'44.17126" N LONGITUDE: 91°05'05.11104" W

FOUND CORNER: LATITUDE: 46°19'40.23353" N LONGITUDE: 91°02'55.95657" W

(c & d) Show a plan view drawing depicting the relevant monuments and reference ties which is sufficient in detail to enable accurate relocation of the corner monument if the corner is disturbed. Indicate north.

Witnessed corner as follows: Bearing trees are blazed. Distances are measured to a nail in the tree.



(e) Describe any material discrepancy between the location of the corner as restored or re-established and the location of that corner as previously restored or re-established by distance and direction. Show the discrepancy on the plan view drawing under (d) above. Show the distances between the corner as previously restored or re-established and (1) the corner as restored or re-established, and (2) to at least 2 of the witness monuments shown on the drawing in (d), above. N/A

(f) Was the corner restored through acceptance of (1) an obliterated evidence location, or, (2) a found perpetuated location? A Found Perpetuated Location

(g & h) Was the corner re-established through lost corner proportionate methods? If so, show the method, including the directions and distances to other public land survey corners used as evidence or or used for proportioning in determining the corner location. N/A

(i) I, Larry T. Nelson, Registration # 1276, certify that the corner location shown on this record was determined by me or under my direction and control and that this U. S. Public Land Survey Monument Record is correct to the best of my knowledge and belief.

Larry T. Nelson
Signature Date

SECTION 36, T. 45 N., R. 6 W.
CORNER IDENTIFICATION NUMBER: 4506360000

NELSON SURVEYING INCORPORATED
101 W. MAIN STREET
SUITE 207
ASHLAND, WISCONSIN 54806
(715) 682-2692
FAX: (715) 682-5100
SURVEYING NORTHERN WISCONSIN SINCE 1954
WWW.NELSONSURVEYING.COM ©

CORNER NUMBER

4 5 0 6 3 6 0 0 0 0
T. R. Sec. Row Col.

R9-5680-5 (7/15/64) H. C. MILLER CO., MILW.

CERTIFIED LAND CORNER RESTORATION

RECORDED AT 11:50 A.M.

ON MAR 31 1965 IN
Vol. 1 of 511 Page 188

State of Wisconsin }
County of Bayfield } ss.

Earl Pederson
REGISTER OF DEEDS

I Elwood L. Olson, do hereby certify that on the 27th day of October, 1964, I found evidence of the Section (Township) corner of Sections 1-6-31-36 Township 44 and 45 North, Range 5 and 6 West, Fourth Principal Meridian, as described hereon; and that from this evidence I established a new monument and accessories as described hereon to perpetuate the original location of this corner:

Description of original monument and accessories and subsequent restorations:

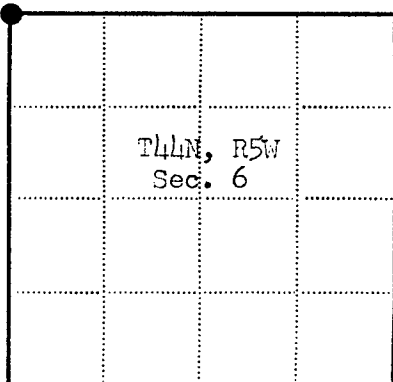
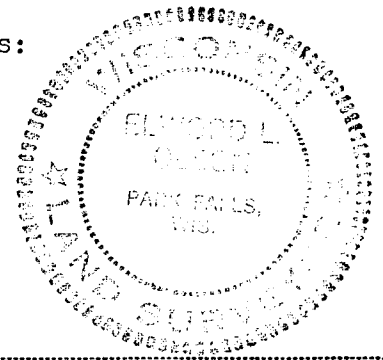
Original corner established in 1857 From notes of Jerod W. Day, Surveyor, as copied by
by Albert C. Stuntz, Government Day from notes of Wm. H. Nettleton.
Deputy Surveyor. Set iron pipe. Falls in the center of the road.
Sugar 12 N56W 32 links.
Linden 10 S45W 28 links.
Hemlock 9 S65E 110 links.
" 10 N72E 24 links.

Description of corner evidence found:

Found iron pipe set by Nettleton 2" under road surface, tipped over (hit by grader). Pipe is 3 inch dia., 36 inches long galvanized iron pipe with 5 inch dia. galvanized iron cap stamped: T44N, R6W, S1, T44N, R5W, S6, S, 31. The corner is in road running E. and W. and 4 feet N. of center of road. I determine the upright position of the monument and reset same with top 8 inches below road surface. A squared white wood witness post bears S0°30'W, 23.95 feet from monument.

Description of monument and accessories I established to perpetuate the original location of this corner:

I establish a reference monument to section corner; set 2" inside dia., 5' long, flanged bottom, concrete filled, galvanized wrought iron pipe with 3" bronze tablet stamped: REFERENCE MONUMENT, T45N, R5W, R6W, S1, S6, S31, S36, T44N, SOUTH, 40.95 FT., S.785, 1964. Monument extends 18" above ground and is surrounded by mound of stone. Thence from section corner reference monument bears North, 40.95 feet.
Blazed and scribed new bearing trees to section corner as follows:
Maple 7" S31°W, 58.6 feet.
Maple 5" S34°E, 60.2 feet.
Nail metal BT sign on both BTs. Paint BTs red.



● = Corner monument restored
□ =

Resident witnesses.....

Dated at Park Falls Wisconsin, this 29th day of December, 1964.

Signature Elwood L. Olson Title Registered Land Surveyor
(County Surveyor, Registered Land Surveyor, or other duly authorized official)

Surveyors Registration No. S-785

Office of.....County of.....

I hereby certify that the within instrument was filed in this office for record on the.....day of.....19....., and was filed in Book No.....Page No.....of County Records.

Signature.....Title.....

Township....., Range....., Section....., Index No....., Page No.....

158

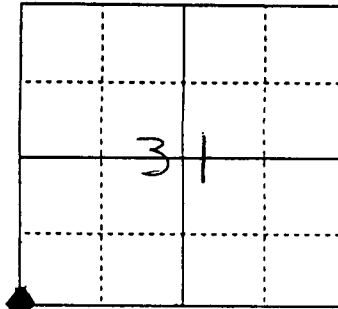
4	5	0	6	3	6	0	0	0	0
T	R	SEC	ROW	COL					

Survey Corner Information Form

Note: This form does not fulfill the requirements of Wisconsin Administrative Code A-E 7.08. It is intended to identify possible PLSS corners discovered by Groeschl Forestry Consulting Inc. (GFC) during the performance of customary field work. This information is recorded to facilitate further investigation by registered land surveyors.

(A) Identify the possible corner by reference to the US Public Land Survey System.

Possible Corner SW
 Section 31
 T 45 N
 R 5 W or E
 Town/City/Village Lincoln
 County Bayfield Wisconsin



◆ denotes possible PLSS monument.

(B) Describe the discovered monument and any other material evidence encountered.

Stamped survey monument, about 4" below ground about 4' ~~south~~ north of E of FR 377 (Camp 8). Wood witness post on south side of road and stamped iron w.c. north of corner about 41'.

(C) Complete the approximate coordinate information assigned to the possible PLSS corner.

Northing 46° 19' 40.23867" N
 Easting 91° 02' 55.95964" W
 Altitude 1206.83 ft.
 Projection Lat./Lon.
 Datum WGS 1984

Date 10/04/01
 Instrument Trimble PPro XRS
 Est. Accuracy ± 2.375 us ft. @ 95% CI
 Name GFC, Inc.



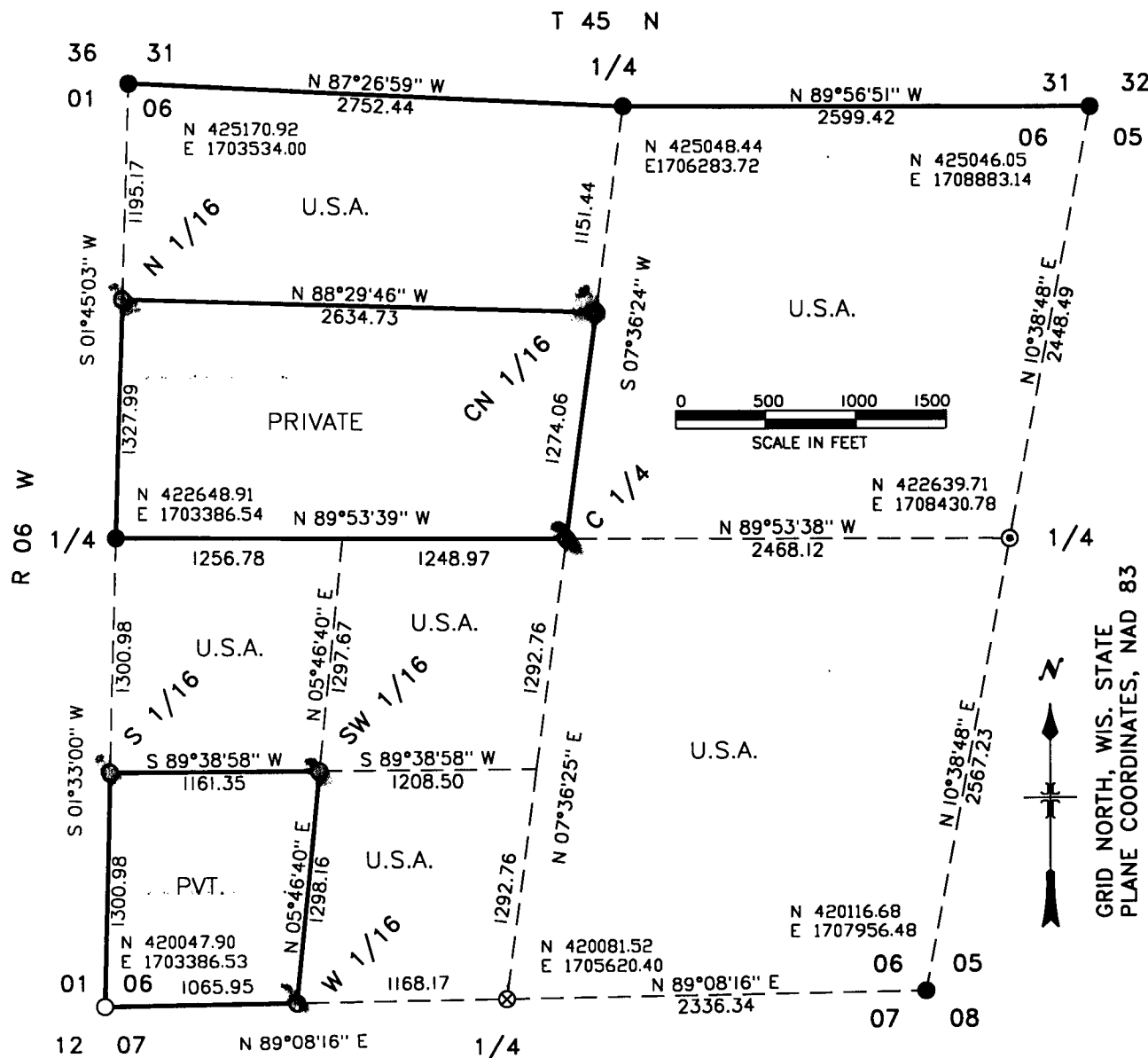
Stock No. 26273

CORNER NUMBER

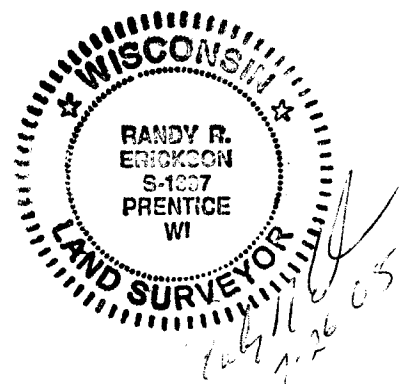
4506360000
T R SEC ROW COL

MAP OF SURVEY

U.S. GOVERNMENT LANDS BEING THE EAST 1/2, THE NORTH 1/2 NW 1/4, THE EAST 1/2 SW 1/4 AND THE NW 1/4 SW 1/4, OF SECTION 06, T 44 N, R 05 W, TOWN OF GRAND VIEW, BAYFIELD COUNTY, WI.



- RECOVERED MONUMENT PREVIOUSLY PERPETUATED TO F.S. STANDARDS.
 - SET A 2" x 36" IRON PIPE WITH 3" BRASS CAP.
 - ⊗ SET A 1" x 36" ALUMINUM DRIVE MONUMENT WITH 2" ALUM. CAP.
 - ⊙ SET A 2" x 36" ALUMINUM PIPE MONUMENT WITH 3" ALUMINUM CAP.
 - LINE MARKED TO U.S.F.S. STANDARDS.
- (N 420081.52) WISCONSIN NORTH ZONE STATE PLANE COORDINATES.





Stock No. 26273

SURVEY NOTES
SECTION 06, T 44 N, R 05 W

THIS SURVEY WAS MADE BY THE U.S.D.A. FOREST SERVICE AT THE REQUEST OF THE GREAT DIVIDE DISTRICT RANGER FOR THE PURPOSE OF RECOVERING, RESTORING, ESTABLISHING, MARKING AND PERPETUATING THE CORNERS AND BOUNDARIES OF U.S. GOVERNMENT LANDS ON THE PERIMETER AND WITHIN SECTION 6, T 44 N, R 05 W, GRAND VIEW TOWNSHIP, BAYFIELD COUNTY, WISCONSIN.

THE ORIGINAL GOVERNMENT SURVEY OF THE TOWNSHIP LINES WAS MADE IN 1857 BY ALBERT STUNTZ. THE INTERIOR SECTION LINES WERE SURVEYED IN 1858 BY DANIEL NORTON. THE NORTH LINE OF SECTION 6 WAS RETRACED IN 1964 BY ELWOOD OLSON, RLS #785.

THIS SURVEY WAS MADE USING REAL TIME KINEMATIC GPS. BAYFIELD COUNTY GPS STATION "TAYLOR LAKE" WAS USED AS THE BASE FOR THIS SURVEY. TRUE LINE TRAVERSES WERE RUN USING AN ELECTRONIC TOTAL STATION INSTRUMENT. ERROR OF CLOSURE BETWEEN GPS CONTROL POINTS WAS BETTER THAN 1:5000.

BEARING TREES WERE BLAZED, SCRIBED AND PAINTED WITH RED PAINT. MEASUREMENTS TO BEARING TREES ARE TO ALUMINUM NAILS IN THE SIDES OF THE TREES ABOVE THE CENTER OF THE ROOT CROWN.

ENCROACHMENTS ON NATIONAL FOREST LANDS INCLUDE TIMBER HARVESTING ALONG THE WEST LINE OF THE SE 1/4 SW 1/4, AND ALONG THE SOUTH LINE OF THE NORTH 1/2 NORTHWEST 1/4.

SURVEY WAS MADE IN MAY AND JUNE OF 2005.

SURVEY CREW: RANDY R. ERICKSON – LAND SURVEYOR; GREG MAYER – CREW CHIEF; TED SOMMMER – SAWYER.

CORNERS RECOVERED

1. NORTHWEST CORNER SECTION 6, T 44 N, R 05 W.
RECOVERED MONUMENT AS RECORDED IN BAYFIELD COUNTY RECORDS:
DATED 3-30-1965 BY RLS #785. BEARING TREES GOOD, REFERENCE
MONUMENT GOOD.
2. NORTH QUARTER CORNER SECTION 6, T 44 N, R 05 W.
RECOVERED MONUMENT AS RECORDED IN BAYFIELD COUNTY RECORDS:
DATED 3-30-1965 BY RLS #785. BEARING TREES GOOD, SET STEEL
SIGN POST EAST 1.2 FEET.
3. NORTHEAST CORNER SECTION 6, T 44 N, R 05 W.
RECOVERED MONUMENT AS RECORDED IN BAYFIELD COUNTY RECORDS:
DATED 3-30-1965 BY RLS #785. 1965 TAMARACK BEARING TREE
S 41° W IS STILL ALIVE, NOW 15" DIAMETER. OTHER 2 TAMARACK
BEARING TREES FROM 1965 ARE DEAD. MARKED NEW BEARING TREES

MAPLE	9"	S 04° W	43.49 FEET
BALSAM	5"	S 70° E	26.78 FEET

 FOUND STEEL SIGN POST SET EAST 2.7 FEET BY F.S. EMPLOYEES.
4. WEST QUARTER CORNER, SECTION 6, T 44 N, R 05 W.
RECOVERED MONUMENT AS RECORDED IN BAYFIELD COUNTY RECORDS:
DATED 3-30-1965 BY RLS #785. BEARING TREES ALL GOOD.
SET A STEEL SIGN POST EAST 1.4 FEET.
5. SOUTHEAST CORNER SECTION 6, T 44 N, R 05 W.
RECOVERED MONUMENT AS DESCRIBED ON DOCUMENT #320346, VOL.1,
PAGE 253, CERTIFIED LAND CORNER RESTORATION BOOK, BAYFIELD
COUNTY RECORDS, FILED IN 1978 BY RLS #785. 1978 MAPLE
BEARING TREES, N 16° W AND S 30° W ARE DEAD. MAPLE BT
S 43° E IS NOW 11" DIAMETER. MARKED NEW BEARING TREES:

ASH	10"	N 65° W	29.33 FEET
MAPLE	9"	N 05° W	24.01 FEET



Stock No. 26273

6. SOUTHWEST CORNER OF SECTION 7, T 44 N, R 05 W.
RECOVERED MONUMENT AS RECORDED BY RLS #785 IN 1962, FILED IN
BAYFIELD COUNTY RECORDS. 1962 OAK BTS BOTH GOOD.
CHISELED CROSS ON BOULDER, GOOD. SET A STEEL SIGN POST
SOUTH 1.0 FEET.

CORNERS RESTORED

1. EAST QUARTER CORNER SECTION 6, T 44 N, R 05 W.
RESTORED CORNER BY SINGLE PROPORTIONATE MEASURE BETWEEN THE
NORTHEAST AND SOUTHEAST CORNER OF SECTION 6. SET A 2" x 36"
ALUMINUM PIPE MONUMENT WITH A 3" ALUMINUM CAP STAMPED TO
IDENTIFY THE CORNER. MONUMENT EXTENDS 4" ABOVE THE GROUND.
SET STEEL SIGN POST EAST 0.6 FEET
CHISELED AND PAINTED "X" ON LARGE ROCKS:
- | | | |
|--------------------------|---------|------------|
| 4'x 3' x 2' ABOVE GROUND | N 07° W | 104.40 FT. |
| 2'x 2' x .5' " | N 54° W | 123.21 FT. |
| 2'x 1.5'x .75' " | N 78° W | 58.00 FT. |
2. SOUTHWEST CORNER SECTION 6, T 44 N, R 05 W.
RESTORED CORNER BY SINGLE PROPORTIONATE MEASURE BETWEEN THE
SOUTHWEST CORNER OF SECTION 7 AND THE WEST 1/4 CORNER OF
SECTION 6. SET A 2" x 36" IRON PIPE WITH A 3" BRASS CAP
STAMPED TO IDENTIFY THE CORNER. MONUMENT EXTENDS 4" ABOVE
GROUND IN MOUND OF STONE. MARKED BEARING TREES:
- | | | |
|-----------------|---------|------------|
| MAPLE 11" | S 70° W | 30.83 FEET |
| MAPLE 7" | S 41° W | 23.12 FEET |
| DBL MAPLE 9" | N 31° W | 17.49 FEET |
| STEEL SIGN POST | NORTH | 0.7 FEET |
3. SOUTH QUARTER CORNER SECTION 6, T 44 N, R 05 W.
RESTORED CORNER BY SINGLE PROPORTIONATE MEASURE BETWEEN THE
SOUTHEAST AND SOUTHWEST CORNERS OF SECTION 6 SET A 1" x 36"
ALUMINUM DRIVE MONUMENT WITH A 2" ALUMINUM CAP STAMPED TO
IDENTIFY THE CORNER. MONUMENT EXTENDS 6" ABOVE GROUND.
MARKED BEARING TREES:
- | | | |
|-----------------|---------|------------|
| WHITE ASH 5" | N 80° E | 22.88 FEET |
| WHITE ASH 4" | N 28° E | 16.57 FEET |
| WHITE ASH 6" | S 16° W | 24.85 FEET |
| STEEL SIGN POST | EAST | 0.5 FEET |
- SMALL WATER HOLE 20 FEET NORTH.

~~1~~ CORNERS ESTABLISHED

1. NORTH 1/16 CORNER, WEST LINE OF SECTION 6, T 44 N, R 05 W.
ESTABLISHED CORNER BY SINGLE PROPORTIONATE MEASURE BETWEEN
THE WEST 1/4 AND NORTHWEST CORNERS OF SECTION 6. SET A
2" x 36" IRON PIPE WITH A 3" BRASS CAP STAMPED TO IDENTIFY
THE CORNER. MONUMENT EXTENDS 6" ABOVE GROUND. MARKED BTS:
- | | | |
|-----------------|---------|------------|
| MAPLE 9" | S 18° W | 4.53 FEET |
| MAPLE 3" | N 10° E | 5.10 FEET |
| MAPLE 5" | N 74° E | 14.64 FEET |
| STEEL SIGN POST | EAST | 0.5 FEET |
2. CENTER NORTH 1/16 CORNER, SECTION 6, T 44 N, R 05 W.
ESTABLISHED CORNER BY PROPORTIONATE MEASURE BETWEEN THE
CENTER 1/4 AND NORTH 1/4 CORNERS OF SECTION 6. SET A 2" x
36" IRON PIPE WITH A 3" BRASS CAP STAMPED TO IDENTIFY THE
CORNER. MONUMENT SET FLUSH WITH GROUND BELOW WOODS ROAD
SURFACE. MARKED BEARING TREES:
- | | | |
|-----------------|---------|------------|
| Y. BIRCH 5" | N 40° W | 18.23 FEET |
| Y. BIRCH 6" | N 45° E | 38.28 FEET |
| HEMLOCK 9" | S 15° W | 20.62 FEET |
| STEEL SIGN POST | SOUTH | 0.5 FEET |



Stock No. 26273

3. CENTER 1/4 CORNER SECTION 6, T 44 N, R 05 W.
ESTABLISHED CORNER AT INTERSECTION OF STRAIGHT LINES BETWEEN OPPOSING 1/4 CORNERS ON THE PERIMETER OF SECTION 6. SET A 2" x 36" IRON PIPE WITH A 3" BRASS CAP STAMPED TO IDENTIFY THE CORNER. MONUMENT EXTENDS 7" ABOVE GROUND. MARKED BTS:
- | | | | |
|-----------------|-----|---------|------------|
| R. PINE | 12" | S 26° E | 27.29 FEET |
| ASH | 4" | N 83° W | 18.40 FEET |
| R. PINE | 11" | N 51° E | 21.60 FEET |
| STEEL SIGN POST | | SOUTH | 0.9 FEET |
4. SOUTH 1/16 CORNER WEST LINE OF SECTION 6, T 44 N, R 05 W.
ESTABLISHED CORNER MID POINT ON LINE BETWEEN THE WEST 1/4 AND SOUTHWEST CORNERS OF SECTION 6. SET A 2" x 36" IRON PIPE WITH A 3" BRASS CAP STAMPED TO IDENTIFY THE CORNER. MONUMENT EXTENDS 6" ABOVE THE GROUND. MARKED BTS:
- | | | | |
|-----------------|-----|---------|------------|
| MAPLE | 10" | N 52° W | 36.04 FEET |
| ASH | 3" | N 06° E | 15.00 FEET |
| ELM | 4" | N 51° E | 21.60 FEET |
| STEEL SIGN POST | | SOUTH | 0.9 FEET |
5. SOUTHWEST 1/16 CORNER SECTION 6, T 44 N, R 05 W.
ESTABLISHED CORNER AT INTERSECTION OF STRAIGHT LINES BETWEEN OPPOSING 1/16 CORNERS ON THE PERIMETER OF THE SOUTHWEST 1/4 OF SECTION 6. SET A 2" x 36" IRON PIPE WITH A 3" BRASS CAP STAMPED TO IDENTIFY THE CORNER. MONUMENT EXTENDS 3" ABOVE GROUND. MARKED BEARING TREES:
- | | | | |
|-----------------|-----|---------|------------|
| MAPLE | 12" | S 31° E | 12.80 FEET |
| MAPLE | 12" | S 50° W | 19.02 FEET |
| ASH | 16" | N 02° W | 14.33 FEET |
| STEEL SIGN POST | | WEST | 0.4 FEET |
6. WEST 1/16 CORNER SECTIONS 6 AND 7, T 44 N, R 05 W.
ESTABLISHED CORNER BY SINGLE PROPORTIONATE MEASURE BETWEEN THE SOUTH 1/4 AND SOUTHWEST CORNERS OF SECTIONS 6. SET A 2" x 36" IRON PIPE WITH A 3" BRASS CAP STAMPED TO IDENTIFY THE CORNER. MONUMENT EXTENDS 5" ABOVE GROUND. NO BEARING TREES AVAILABLE. SET A STEEL SIGN POST NORTH 0.5 FEET.

SURVEYORS AFFIDAVIT

STATE OF WISCONSIN)
COUNTY OF BAYFIELD) SS

I RANDY R. ERICKSON, LAND SURVEYOR FOR THE U.S.D.A. FOREST SERVICE AND A REGISTERED LAND SURVEYOR IN THE STATE OF WISCONSIN, DO HEREBY CERTIFY THAT I HAVE SURVEYED AND SUBDIVIDED SECTION 6, T 44 N, R 05 W, 4TH P.M., BAYFIELD COUNTY, WISCONSIN. DURING THIS SURVEY I HAVE COMPLIED WITH THE RULES FOR THE DIVISION OF THE PUBLIC LANDS AND APPLICABLE STATE RULES. THE MAP AND ACCOMPANYING NOTES ARE A CORRECT AND ACCURATE REPRESENTATION OF THE SURVEY TO THE BEST OF MY KNOWLEDGE AND BELIEF.


RANDY R. ERICKSON
WIS. REGISTERED L.S. #1897

7-26-2005
DATE

