

CORNER NUMBER

4 50736 2000
T R SEC ROW COL

U.S. PUBLIC LAND SURVEY MONUMENT RECORD

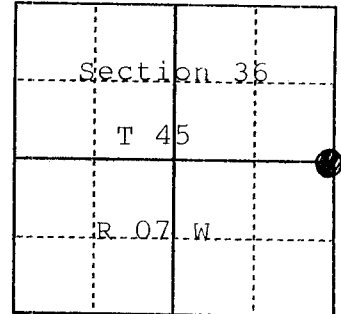
Note: This form is intended and designed to fulfill all requirements of Wisconsin Administrative Code, Chapter A-E 7.08, U.S. Public Land Survey Record (3) (a)(b)(c)(d)(e)(f)(g)(h)(i).

PAGES: 2

V5LCRP673-674

(a) Identify the corner by reference to the U.S. public land survey system.

Corner East Quarter
Section Section 36
Township 45 North
Range 07 West
Town/City/Village Drummond
Bayfield County



● = Corner
Monument
Restored

(b) Describe any record evidence, monument evidence, occupational evidence, testimonial evidence, or any other material evidence you considered, and whether the monument was found or placed.

Found old metal sign nailed to Ash, East 9.0 feet from which we found post point under ground. Set a 2" x 36" aluminum pipe monument with a 3" alum. cap at point of post point. Monument extends 5" above ground.

(c & d) Provide plan view drawing on reverse side.

(e) Describe any material discrepancy between the location of the corner as restored and the location of the corner as previously restored or reestablished. Show the discrepancy on the plan view drawing.

None

(f) Was the corner restored through acceptance of an obliterated location or a found perpetuated location? Corner was considered obliterated

673

(g & h) Was the corner reestablished through lost corner proportionate methods? If so, show the method, including the directions and distances to other public land survey corners used as evidence or used for proportioning in determining the corner location.

No

(c) In the plan view below, provide reference ties to at least four witness monuments, or, if the location is within a municipality, to at least two witness monuments. (Witness monuments shall be of concrete, natural stone, iron, bearing trees, or other equally durable material.

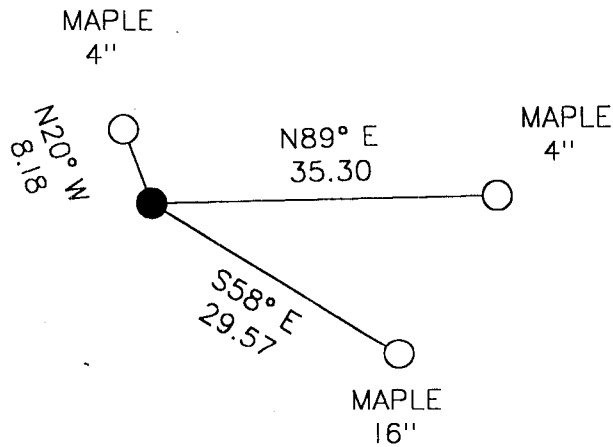
(d) In the plan view drawing depict the relevant monuments and reference ties which are sufficient in detail to enable accurate relocation of the corner monument if the corner monument is disturbed.

Established Wisconsin North Zone State Plane Coordinates for corner:

N 428574.61 E 1671483.93 NAD 83 1991 U.S. foot



- 2" X 36" ALUMINUM PIPE MONUMENT WITH 3" CAP.
- BT MEASURED TO ALUMINUM NAIL IN SIDE OF TREE ABOVE CENTER OF ROOT CROWN.



SET STEEL SIGN POST NORTH 0.6 FEET

(i) I, Randy R. Erickson, Registration Number 1897 certify that the corner location on this record was determined by me or under my direction and that this U.S. Public Land Survey Monument Record is correct and complete to the best of my knowledge and belief.

Randy R. Erickson
Signature

12-23-2009
Date



674

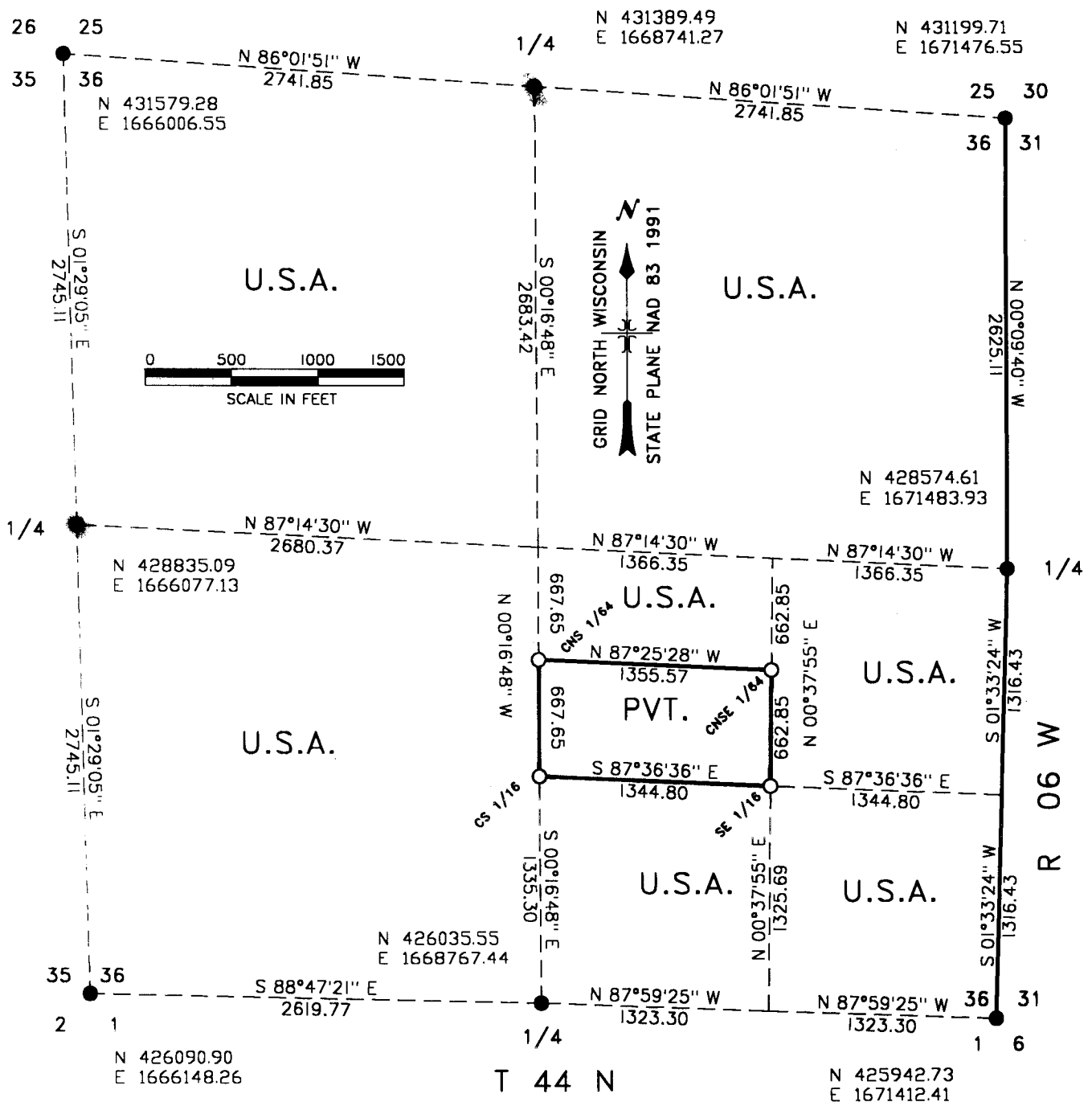
f x



Stock No. 26273

MAP OF SURVEY

U.S. GOVERNMENT LANDS BEING THE WEST 1/2, THE NORTHEAST 1/4, THE SOUTH 1/2 SOUTHEAST 1/4, THE NORTHEAST 1/4 SOUTHEAST 1/4 AND THE NORTH 1/2 NORTHWEST 1/4 SOUTHEAST 1/4 OF SECTION 36, TOWNSHIP 45 NORTH, RANGE 7 WEST, BAYFIELD COUNTY, WISCONSIN.



LEGEND

- MONUMENT FOUND OR SET TO FOREST SERVICE AND BAYFIELD CO. STANDARD.
U.S. PUBLIC LAND SURVEY MONUMENT RECORD ON FILE WITH BAYFIELD CO.
- SET A 2" X 36" ALUMINUM PIPE MONUMENT WITH A 3" ALUMINUM CAP.
- LINE MARKED TO FOREST SERVICE STANDARD.

(N 426090) WISCONSIN NORTH ZONE STATE PLANE COORDINATES NAD 83 1991





Stock No. 26273

SURVEY NOTES SECTION 36
TOWNSHIP 45 NORTH, RANGE 07 WEST
BAYFIELD COUNTY, WISCONSIN

THIS SURVEY WAS MADE BY THE U.S.D.A. FOREST SERVICE AT THE REQUEST OF THE WASHBURN RANGER DISTRICT OF THE CHEQUAMEGON – NICOLET NATIONAL FOREST. THE PURPOSE OF THIS SURVEY WAS TO RECOVER, RESTORE, ESTABLISH, MARK AND PERPETUATE THE CORNERS AND BOUNDARIES OF NATIONAL FOREST LANDS ON THE PERIMETER AND WITHIN SECTION 36, TOWNSHIP 45 NORTH, RANGE 07 WEST, BAYFIELD COUNTY, WISCONSIN.

ORIGINAL SURVEYS: IN 1857 ALBERT STUNTZ SURVEYED THE EAST AND SOUTH LINES OF SECTION 36. IN 1858 DANIEL NORTON SURVEYED THE NORTH AND WEST LINES OF SECTION 36.

THIS SURVEY WAS MADE USING REAL TIME KINEMATIC GPS. "BURHO GPS" STATION WAS USED AS THE BASE FOR THIS SURVEY. DISTANCES AND BEARINGS SHOWN ON MAP ARE GRID, BASED ON WISCONSIN NORTH ZONE STATE PLANE COORDINATES. TRUE LINE TRAVERSES WERE MADE USING AN ELECTRONIC TOTAL STATION INSTRUMENT. ERROR OF CLOSURE BETWEEN GPS CONTROLLED POINTS WAS BETTER THAN 1:5000.

BEARING TREES ARE BLAZED, SCRIBED AND PAINTED RED. MEASUREMENTS TO BEARING TREES ARE TO ALUMINUM NAILS IN THE SIDE OF TREES ABOVE THE CENTER OF THE ROOT CROWN.

NO NOTABLE ENCROACHMENTS WERE FOUND ON NATIONAL FOREST LANDS.

SURVEY CREW: RANDY ERICKSON, LAND SURVEYOR; GREG MAYER, CREW CHIEF; JASEN TEAL, SAWYER.

SURVEY WAS MADE SEPTEMBER 2009 – JANUARY 2010.

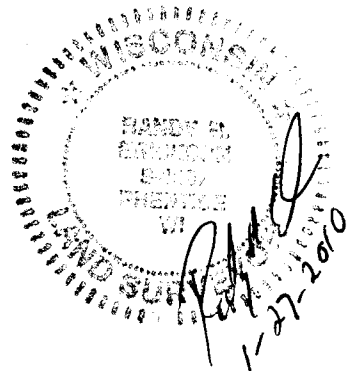
CORNERS RECOVERED

1. NORTHWEST CORNER SECTION 36, T 45 N, R 07 W.
RECOVERED MONUMENT AS DESCRIBED ON DOCUMENT #223877, BAYFIELD COUNTY REGISTER OF DEEDS. FILED IN 1961 BY RLS #212. BEARING TREES ARE GOOD. FOUND STEEL SIGN POST SET NORTH, 0.8 FEET.
2. NORTHEAST CORNER SECTION 36, T 45 N, R 07 W.
RECOVERED MONUMENT AS DESCRIBED ON DOCUMENT #443922, VOL. 3, PAGES 392–393, LAND CORNER RECORDS, BAYFIELD COUNTY REGISTER OF DEEDS, FILED IN 1998 BY RLS #1610. BEARING TREES GOOD, SET A STEEL SIGN POST NORTH, 0.7 FEET.
3. EAST QUARTER CORNER SECTION 36, T 45 N, R 07 W.
RECOVERED REMAINS OF WOOD POST IN OLD POST HOLE. PERPETUATION DESCRIBED ON BAYFIELD COUNTY, U.S. PUBLIC LAND SURVEY MONUMENT RECORD, FILED WITH BAYFIELD COUNTY IN FEBRUARY 2010 BY RLS #1897.
4. SOUTHWEST CORNER SECTION 36, T 45 N, R 07 W.
RECOVERED MONUMENT AS DESCRIBED ON DOCUMENT #229462 BAYFIELD COUNTY REGISTER OF DEEDS, FILED JANUARY 03, 1962 BY RLS #212
1961 BEARING TREES ARE GONE. MARKED NEW BEARING TREES:

ELM	5"	N 71° W	37.37 FEET
ELM	5"	N 85° W	44.10 FEET
ELM	5"	S 46° W	37.84 FEET
STEEL SIGN POST		WEST	0.6 FEET
5. SOUTH QUARTER CORNER, SECTION 36, T 45 N, R 07 W.
RECOVERED MONUMENT AS DESCRIBED ON DOCUMENT #229493 BAYFIELD COUNTY REGISTER OF DEEDS, FILED JANUARY 03, 1962 BY RLS #212
BALSAM BEARING TREES FROM 1961 ARE GONE. 1961 SPRUCE BT IS GOOD, NOW 18" DIAMETER. MARKED NEW BEARING TREES:

MAPLE	2"	S 62° E	24.62 FEET
ASPEN	8"	S 39° W	24.97 FEET
STEEL SIGN POST		NORTH	0.4 FEET
6. SOUTHEAST CORNER SECTION 36, T 45 N, R 07 W.
RECOVERED MONUMENT AS DESCRIBED ON CERTIFIED LAND CORNER RESTORATION FILED MARCH 02, 1961 WITH BAYFIELD COUNTY REGISTER OF DEEDS, BY RLS #212. 1961 WHITE PINE BEARING TREE IS GONE. TAMARACK BEARING TREE S 14° W, 14.5 FEET IS GONE. TAMARACK BEARING TREE S 82° E, 33.0 FEET IS GOOD, IT IS NOW 11" DIAMETER. MARKED NEW BEARING TREES:

TAMARACK	5"	S 34° W	53.19 FEET
BLACK SPRUCE	7"	N 38° W	47.33 FEET
STEEL SIGN POST		NORTH	0.9 FEET





Stock No. 26273

CORNERS RESTORED

1. QUARTER CORNER SECTIONS 25 AND 36, T 45 N, R 07 W.
RESTORED CORNER BY SINGLE PROPORTIONATE MEASURE.
PERPETUATION DESCRIBED ON BAYFIELD COUNTY U.S. PUBLIC LAND
SURVEY MONUMENT RECORD, FILED WITH BAYFIELD COUNTY FEBRUARY
2010 BY RLS #1897.
2. QUARTER CORNER SECTIONS 35 AND 36, T 45 N, R 07 W.
RESTORED CORNER BY SINGLE PROPORTIONATE MEASURE.
PERPETUATION DESCRIBED ON BAYFIELD COUNTY U.S. PUBLIC LAND
SURVEY MONUMENT RECORD, FILED WITH BAYFIELD COUNTY FEBRUARY
2010 BY RLS #1897.

CORNER ESTABLISHED

1. CENTER SOUTH 1/16 CORNER SECTION 36, T 45 N, R 07 W.
ESTABLISHED CORNER MID POINT ON LINE BETWEEN THE CENTER 1/4
AND SOUTH 1/4 CORNERS OF SECTION 36. SET A 2" X 36"
ALUMINUM PIPE MONUMENT WITH A 3" ALUMINUM CAP STAMPED TO
IDENTIFY THE CORNER. MONUMENT EXTENDS 6" ABOVE GROUND.
MARKED BEARING TREES:

OAK	11"	S 19° E	4.63 FEET
OAK	9"	S 76° W	8.84 FEET
MAPLE	8"	N 03° W	11.27 FEET
STEEL SIGN POST		NORTH	0.5 FEET
2. SOUTHEAST 1/16 CORNER SECTION 36, T 45 N, R 07 W.
ESTABLISHED CORNER AT INTERSECTION OF STRAIGHT LINES BETWEEN
OPPOSING 1/16 CORNERS ON THE PERIMETER OF THE SOUTHEAST 1/4
OF SECTION 36. SET A 2" X 36" ALUMINUM PIPE MONUMENT WITH A
3" ALUMINUM CAP STAMPED TO IDENTIFY THE CORNER. MONUMENT
EXTENDS 5" ABOVE GROUND. MARKED BEARING TREES:

MAPLE	7"	S 12° E	28.96 FEET
MAPLE	6"	N 27° W	8.56 FEET
OAK	8"	N 37° E	19.72 FEET
STEEL SIGN POST		WEST	0.8 FEET
3. CENTER NORTH SOUTH 1/64 CORNER SECTION 36, T 45 N, R 07 W.
ESTABLISHED CORNER MID POINT ON LINE BETWEEN THE CENTER 1/4
AND THE CENTER SOUTH 1/16 CORNERS OF SECTION 36. SET A
2" X 36" ALUMINUM PIPE MONUMENT WITH A 3" ALUMINUM CAP
STAMPED TO IDENTIFY THE CORNER. MONUMENT EXTENDS 4" ABOVE
GROUND. CORNER FALLS 25 FEET EAST OF OLD NORTH - SOUTH
FENCE. MARKED BEARING TREES:

OAK	8"	N 33° W	28.56 FEET
OAK	6"	S 02° W	39.90 FEET
MAPLE	7"	S 69° W	28.62 FEET
STEEL SIGN POST		SOUTH	0.5 FEET
4. CENTER NORTH SOUTHEAST 1/64 CORNER SECTION 36, T 45 N, R 07 W
ESTABLISHED CORNER MID POINT ON LINE BETWEEN THE CENTER EAST
1/16 AND SOUTHEAST 1/16 CORNERS OF SECTION 36. SET A
2" X 36" ALUMINUM PIPE MONUMENT WITH A 3" ALUMINUM CAP
STAMPED TO IDENTIFY THE CORNER. MONUMENT EXTENDS 7" ABOVE
GROUND. MARKED BEARING TREES:

ASH	9"	S 60° E	22.48 FEET
ASH	6"	S 27° E	28.19 FEET
MAPLE	5"	S 06° W	32.18 FEET
STEEL SIGN POST		SOUTH	0.4 FEET

SURVEYORS AFFIDAVIT

STATE OF WISCONSIN)
COUNTY OF BAYFIELD) SS

I RANDY ERICKSON, LAND SURVEYOR FOR THE U.S.D.A. FOREST SERVICE
AND A REGISTERED LAND SURVEYOR IN THE STATE OF WISCONSIN, DO
HERE BY CERTIFY THAT I HAVE SURVEYED AND SUBDIVIDED SECTION 36,
TOWNSHIP 45 NORTH, RANGE 07 WEST, 4TH P.M., BAYFIELD COUNTY,
WISCONSIN. DURING THIS SURVEY I HAVE COMPLIED WITH THE RULES FOR
THE DIVISION OF THE PUBLIC LANDS AND APPLICABLE STATE RULES. THE
MAP AND ACCOMPANYING NOTES ARE A CORRECT AND ACCURATE
REPRESENTATION OF THE SURVEY TO THE BEST OF MY KNOWLEDGE AND
BELIEF.


RANDY R. ERICKSON
WISCONSIN REGISTERED L.S. #1897

DATE: JANUARY 27, 2010

