

*Otto Korpela*

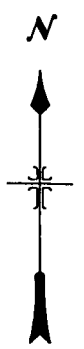
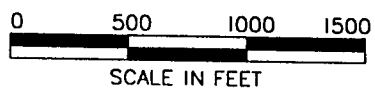
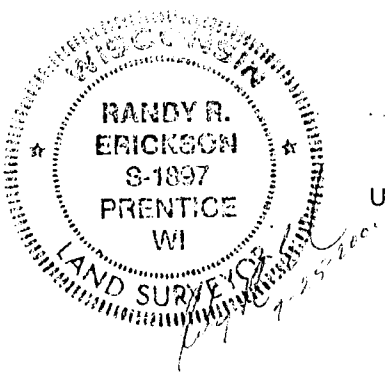
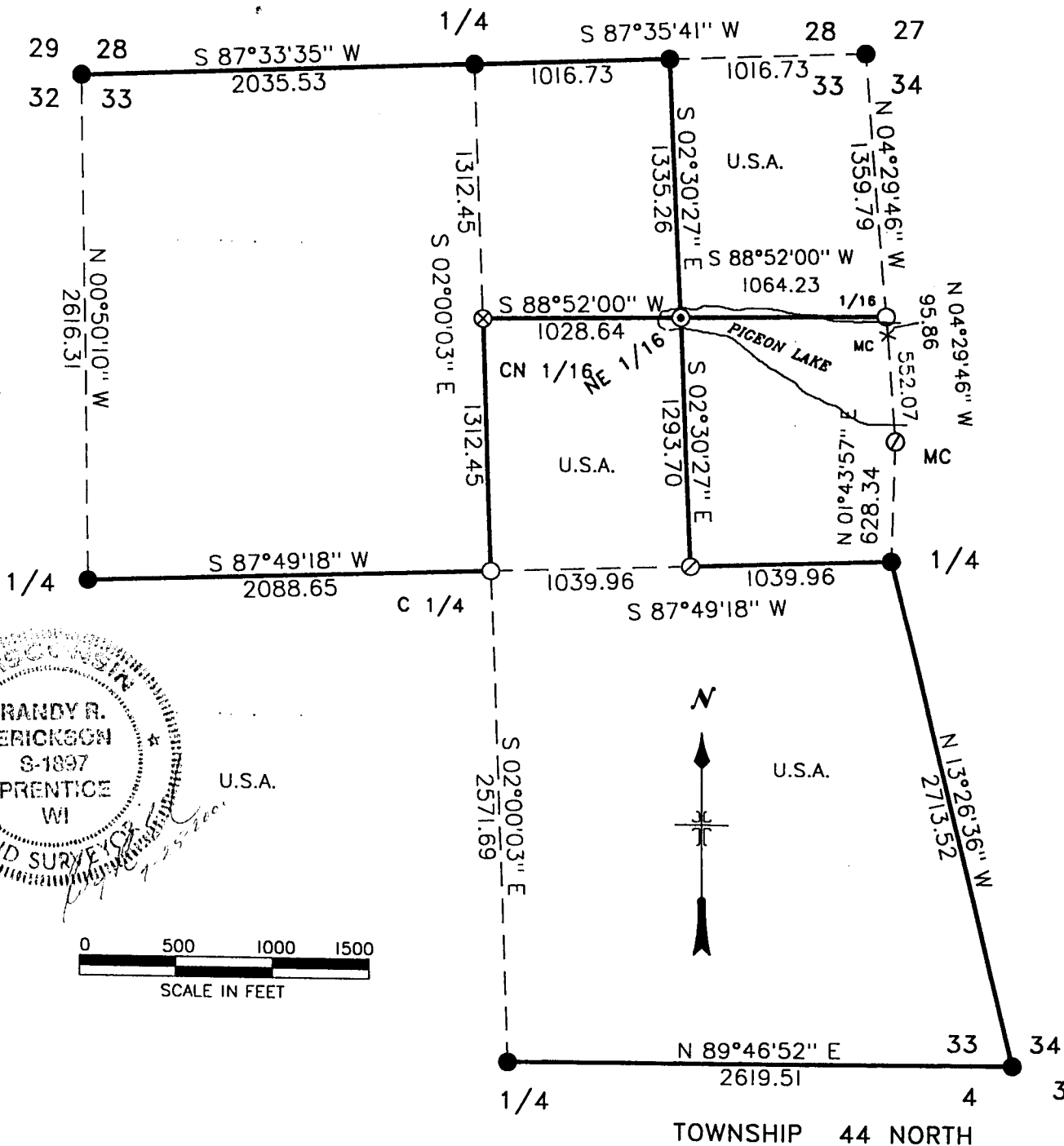
REGISTER OF DEEDS

'01 FEB 1 AM 9 34

MAP OF SURVEY

REGISTER'S OFFICE/S.S.  
BAYFIELD COUNTY, WIS.

U.S. GOVERNMENT LANDS BEING THE NE NE,  
THE SW NE, AND THE SOUTH 1/2 OF SEC.  
33, TOWNSHIP 45 NORTH, RANGE 8 WEST,  
BAYFIELD COUNTY, WISCONSIN.



LEGEND

- RECOVERED MONUMENT PREVIOUSLY PERPETUATE TO U.S.F.S SPECS.
- SET A 2" x 36" IRON PIPE WITH BRASS TABLET.
- ⊙ SET A 2" x 36" ALUMINUM PIPE MONUMENT WITH ALUMINUM CAP.
- ⊗ SET A 1" x 30" ALUMINUM DRIVE IN MONUMENT WITH 2" ALUM CAP.
- LINE MARKED TO FOREST SERVICE SPECS.
- ⊗ SET A 3/4" x 24" IRON REBAR W/ 2" x 36" IRON REFERNCE MONUMENTS.

SURVEY NOTES SECTION 33  
TOWNSHIP 45 NORTH, RANGE 8 WEST

THIS SURVEY WAS MADE AT THE REQUEST OF THE WASHBURN DISTRICT RANGER FOR THE U.S.F.S. FOR THE PURPOSE OF RECOVERING, RESTORING, ESTABLISHING, PERPETUATING AND MARKING CORNERS AND BOUNDARIES OF U.S. GOVERNMENT LANDS ON THE PERIMETER AND WITHIN SECTION 33, T 45 N, R 8 W, BAYFIELD COUNTY, WISCONSIN.

ORIGINAL GOVERNMENT SURVEYS: DEPUTY SURVEYOR ALBERT STUNTZ SURVEYED THE SOUTH LINE OF SECTION 33 IN 1856. DEPUTY SURVEY HIRAM FELLOWS SURVEYED THE OTHER LINES ON THE PERIMETER OF SECTION 33 LATER IN 1856. SURVEYOR JEROD DAY RETRACED THE SECTION LINES IN 1919. EAST LINE OF SECTION 33 WAS RETRACED IN 1959 BY TOM NELSON, R.L.S. #263. NORTH LINE OF SECTION 33 WAS RETRACED IN 1964 AND 1965 BY ELWOOD OLSON, R.L.S. #785. WEST LINE WAS RETRACED IN 1980-81 BY HADLEY CHAFER, R.L.S. #1256. DUANE MARTEN, R.L.S. #1029, SUBDIVIDED SECTION 33 IN 1974. I ALSO FOUND PINS FROM A VERY RECENT SURVEY WHICH HAD NOT YET BEEN RECORDED.

I WAS UNABLE TO USE THE MC AS MONUMENTED IN 1959 ON THE NORTH SIDE OF PIGEON LAKE. I FEEL IT WAS IMPROPERLY RESTORED.

SURVEY WAS MADE USING AN ELECTRONIC TOTAL STATION INSTRUMENT WITH AN ELECTRONIC DATA COLLECTOR. BEARINGS ARE TRUE BASED ON A SOLAR OBSERVATION FROM 1981 BY R.L.S. 1256, ESTABLISHING THE TRUE BEARING OF THE NORTH 1/2 OF THE WEST LINE OF SECTION 33. BEARING TREES ARE BLAZED, SCRIBED AND PAINTED WITH RED PAINT. MEASUREMENTS TO BTS ARE TO ALUMINUM NAILS IN SIDE OF TREE ABOVE CENTER OF ROOT CROWN.

ENCROACHMENTS ON NATIONAL FOREST LANDS: FOUND GARBAGE AND DEBRIS ALONG WEST LINE OF SW NE SOUTH OF HIGHWAY "N". FOUND PERMANENT DEER STAND NEAR SOUTH LINE OF SW SE OF SECTION 28.

SURVEY WAS MADE IN JUNE AND JULY OF 2000.

CORNERS RECOVERED

1. CORNER SECTION 28-29-32-33, T 45 N, R 8 W.  
RECOVERED MONUMENT AS DESCRIBED ON CERTIFIED PLAT OF SURVEY FILED IN BAYFIELD COUNTY RECORDS BY R.L.S. #785 IN 1968.  
MARKED A NEW BEARING TREE: W. PINE 11" N 65° W 35.68 FT.
2. QUARTER CORNER SECTIONS 28 AND 33, T 45 N, R 8 W.  
RECOVERED MONUMENT AS DESCRIBED ON CERTIFIED PLAT OF SURVEY FILED IN BAYFIELD COUNTY RECORDS BY R.L.S. 785 IN 1968.  
MARKED A NEW BEARING TREE: MAPLE 5" S 81° E 27.27 FEET.  
SET STEEL SIGN POST WEST 0.9 FEET.
3. EAST 1/16 CORNER SECTIONS 28 AND 33, T 45 N, R 8 W.  
RECOVERED MONUMENT AS DESCRIBED ON CERTIFIED PLAT OF SURVEY FILED IN BAYFIELD COUNTY RECORDS BY R.L.S. #785 IN 1968.  
(ALL BEARING TREES ARE BLOWN DOWN, AS WELL AS ANY OTHER POTENTIAL BEARING TREES.) SET A STEEL SIGN POST WEST 1.4 FT
4. CORNER OF SECTIONS 27-28-33-34, T 45 N, R 8 W.  
RECOVERED MONUMENT AS DESCRIBED ON CERTIFIED PLAT OF SURVEY FILED IN BAYFIELD COUNTY RECORDS BY R.L.S. 785 IN 1968.
5. SOUTH MEANDER CORNER ON PIGEON LAKE BETWEEN SECTIONS 33 AND 34, T 45 N, R 8 W.  
FOUND PIPE FROM 1959 SURVEY BENT OVER WITH HALF THE CAP BROKEN OFF. FOUND STUMPS OF 1959 MAPLE BEARING TREE SW AND W. BIRCH SE. MAPLE BT TO SE IS STILL GREEN. SET A NEW 2" x 36" ALUMINUM PIPE MONUMENT WITH AN ALUMINUM CAP STAMPED TO IDENTIFY THE CORNER. MONUMENT IS FLUSH WITH GROUND.  
MARKED NEW BEARING TREES;  
OAK 14" S 55° W 71.70 FEET.  
MAPLE 4" S 60° E 72.20 FEET.  
STEEL SIGN POST SOUTH 0.4 FEET.

6. QUARTER CORNER SECTIONS 32 AND 33, T 45 N, R 8 W.  
RECOVERED MONUMENT AS DESCRIBED ON DOCUMENT #287746, VOL. 1, PAGE 19, OF CERTIFIED LAND CORNER RESTORATIONS, BAYFIELD COUNTY RECORDS, FILED IN 1973 BY R.L.S. #785.
7. QUARTER CORNER SECTIONS 33 AND 34, T 45 N, R 8 W.  
RECOVERED MONUMENT AS DESCRIBED ON CERTIFIED PLAT OF SURVEY FILED IN BAYFIELD COUNTY RECORDS BY R.L.S. #263 IN 1959.  
BEARING TREES WERE PERPETUATED IN 1996.
8. SOUTHEAST CORNER SECTION 33, T 45 N, R 8 W.  
RECOVERED MONUMENT AS DESCRIBED ON CERTIFIED PLAT OF SURVEY FILED IN BAYFIELD COUNTY RECORDS BY R.L.S. #263 IN 1959.  
BEARING TREES WERE PERPETUATED IN 1996.
9. SOUTH QUARTER CORNER SECTION 33, T 45 N, R 8 W.  
RECOVERED MONUMENT AS DESCRIBED ON DOCUMENT #293996, VOL. 1, PAGE 105 OF CERTIFIED LAND CORNER RESTORATIONS, BAYFIELD CO. RECORDS, FILED IN 1974 BY R.L.S. #785. BTs STILL GOOD.

CORNERS ESTABLISHED

1. CENTER QUARTER CORNER SECTION 33, T 45 N, R 8 W.  
ESTABLISHED CORNER AT INTERSECTION OF STRAIGHT LINES BETWEEN OPPOSING 1/4 CORNERS ON THE PERIMETER OF SECTION 33. SET A 2" x 36" IRON PIPE WITH A 3" BRASS TABLET STAMPED TO IDENTIFY THE CORNER. MONUMENT EXTENDS 7" ABOVE GROUND IN MOUND OF STONE. MARKED BEARING TREES:  

RED OAK	4"	N 55° W	8.57 FEET
WHITE OAK	7"	N 70° E	27.02 FEET
MAPLE	5"	N 41° E	26.94 FEET

 FOUND MARTEN'S 1" PIPE 0.9 FEET EAST.
2. CENTER NORTH ONE SIXTEENTH CORNER SECTION 33, T 45 N, R 8 W.  
ESTABLISHED CORNER MID POINT ON LINE BETWEEN THE NORTH 1/4 AND CENTER 1/4 CORNERS OF SECTION 33. SET A 3/4" x 24" IRON REBAR AT CORNER 6" BELOW GRAVEL SURFACE. ALSO SET TWO REFERENCE MONUMENTS, 2" x 36" IRON PIPES WITH BRASS TABLETS STAMPED AS REFERENCE MONUMENTS. MARKED A BEARING TREE:  

OAK	4"	N 19° W	27.43 FEET
REFERENCE MON. #1		S 27° W	19.83 FEET
REFERENCE MON. #2		S 27° E	23.03 FEET

 SET STEEL SIGN POSTS ALONG SIDE EACH REFERENCE MONUMENT  

STEEL SIGN POST	SOUTH	20.70 FEET
-----------------	-------	------------

 CORNER IS 4 FEET SOUTH OF CENTER LINE OF F.R. #394.
3. CENTER EAST ONE SIXTEENTH CORNER 33, T 45 N, R 8 W.  
ESTABLISHED CORNER MID POINT ON LINE BETWEEN THE CENTER 1/4 AND EAST 1/4 CORNERS OF SECTION 33. SET A 2" x 36" ALUMINUM PIPE MONUMENT WITH A 3" ALUMINUM CAP STAMPED TO IDENTIFY THE CORNER. MONUMENT EXTENDS 20" ABOVE GROUND IN LARGE MOUND OF STONE. FOUND 1/2" x ?" IRON PIN 1.4 FEET EAST. MARKED BTs:  

OAK	10"	S 12° E	16.34 FEET
MAPLE	5"	S 63° W	8.31 FEET
MAPLE	7"	N 16° W	6.34 FEET

 STEEL SIGN POST NORTH 5.1 FEET
4. NORTHEAST 1/16 CORNER SECTION 33, T 45 N, R 8 W.  
ESTABLISHED CORNER AT INTERSECTION OF STRAIGHT LINES BETWEEN OPPOSING 1/16 CORNERS ON THE PERIMETER OF THE NORTHEAST 1/4 OF SECTION 33. SET A 1" x 30" ALUMINUM PIPE DRIVE MONUMENT WITH A 2" ALUMINUM CAP STAMPED TO IDENTIFY THE CORNER. MONUMENT EXTENDS 12" ABOVE BOTTOM OF LAKE. FOUND A IRON PIN N 03° W 21.00 FEET. MARKED BEARING TREES:  

RED PINE	12"	S 35° E	65.78 FEET
W. PINE	10"	S 02 1/2° W	67.81 FEET

 STEEL SIGN POST NORTH 1.0 FEET  
 CORNER FALLS IN PIGEON LAKE.

5. NORTH ONE SIXTEENTH CORNER SECTIONS 33 AND 34, T 45 N, R 8 W. ESTABLISHED CORNER BY SINGLE PROPORTIONATE MEASURE BETWEEN THE SOUTH MC OF PIGEON LAKE AND THE NORTHEAST CORNER OF SECTION 33. SET A 2" x 36" IRON PIPE WITH A 3" BRASS TABLET STAMPED TO IDENTIFY THE CORNER. MONUMENT EXTENDS 6" ABOVE GROUND. ERRONEOUS MC FROM 1959 IS N 05° W 53.65 FEET.

MARKED BEARING TREES:

W. PINE	18"	N 17° W	101.35 FEET
W. PINE	20"	N 09° E	78.60 FEET
R. PINE	20"	N 24° E	85.45 FEET
STEEL SIGN POST		WEST	0.4 FEET

(\* BEARING TREE DISTANCES ARE ALL SLOPE DISTANCES)  
CORNER IS 14 FEET NORTH OF PIGEON LAKE.

SURVEY AFFIDAVIT

STATE OF WISCONSIN)  
COUNTY OF BAYFIELD) SS

I RANDY R. ERICKSON, LAND SURVEYOR FOR THE U.S.D.A. FOREST SERVICE AND A REGISTERED LAND SURVEYOR IN THE STATE OF WISCONSIN DO HEREBY CERTIFY THAT I HAVE SURVEYED AND SUBDIVIDED SECTION 33, T 45 N, R 8 W. 4TH P.M., BAYFIELD COUNTY, WISCONSIN. DURING THIS SURVEY I HAVE COMPLIED WITH THE RULES FOR THE DIVISION OF THE PUBLIC LANDS AND THE APPLICABLE STATUTES OF THE STATE OF WISCONSIN. THE MAP AND ACCOMPANYING NOTES ARE A CORRECT AND ACCURATE REPRESENTATION OF THE SURVEY TO THE BEST OF MY KNOWLEDGE AND BELIEF.

*Randy R. Erickson*  
RANDY R. ERICKSON  
WIS. REG. LAND SURVEYOR #1897

DATE 7-27-2000

SURVEY CREW:  
RANDY ERICKSON  
GREG MAYER

LAND SURVEYOR  
SURVEYING TECHNICIAN

