

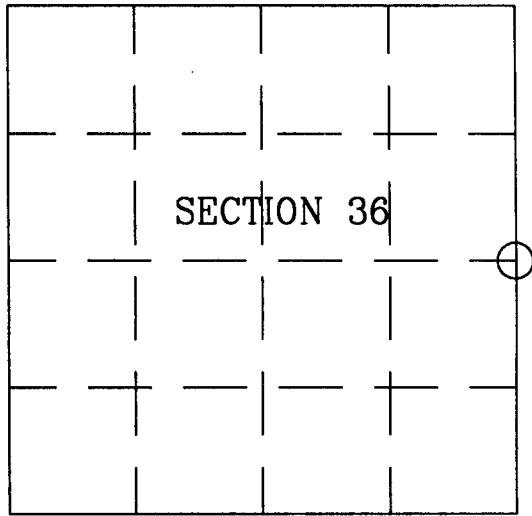
# BAYFIELD COUNTY LAND SURVEY MONUMENT RECORD

INSTRUCTIONS: This record shall show the location of the corner and shall include all of the following nine elements (a through i).

(a) Identify the corner by reference to the U.S. public land survey system.

○ = Corner monument restored.

East 1/4 corner of Section 36, T.46N., R.5W., in the Town of Kelly, Bayfield County, Wisconsin.



(b) Describe any record evidence, monument evidence, occupational evidence, testimonial evidence or any other material evidence you considered, and whether the monument was found or placed.

Found a 3-1/2" iron pipe with a 4" cap stamped to identify the corner. Corner falls in fence lines north, east and west. The corner was set by J.W. Day in the early 1920s. He set it on the straight line between the NW and SW corners of Section 31 and on a fence line to the west. This corner was also used by Phillips in the 1920s.

VOL. 3 OF CG PAGE 209 -  
 Otto Korhela 210  
 REGISTER OF DEEDS  
 '98 JUN 22 AM 9 30  
 REGISTER'S OFFICE / S.S.  
 BAYFIELD COUNTY, WIS.

433786

(c & d) Provide plan view drawing on reverse side.

(e) Describe any material discrepancy between the location of the corner as restored or re-established and the location of that corner as previously restored or re-established by distance and direction. Show the discrepancy on the plan view drawing under (d) above. Show the distances between the corner as previously restored or re-established and (1) the corner as restored or re-established, and (2) to at least 2 of the witness monuments shown on the drawing in (d), above.

N/A

(f) Was the corner restored through acceptance of (1) an obliterated evidence location, or, (2) a found perpetuated location?

A found perpetuated location

(g & h) Was the corner re-established through lost corner proportionate methods? If so, show the method, including the directions and distances to other public land survey corners used as evidence or used for proportioning in determining the corner location.

N/A

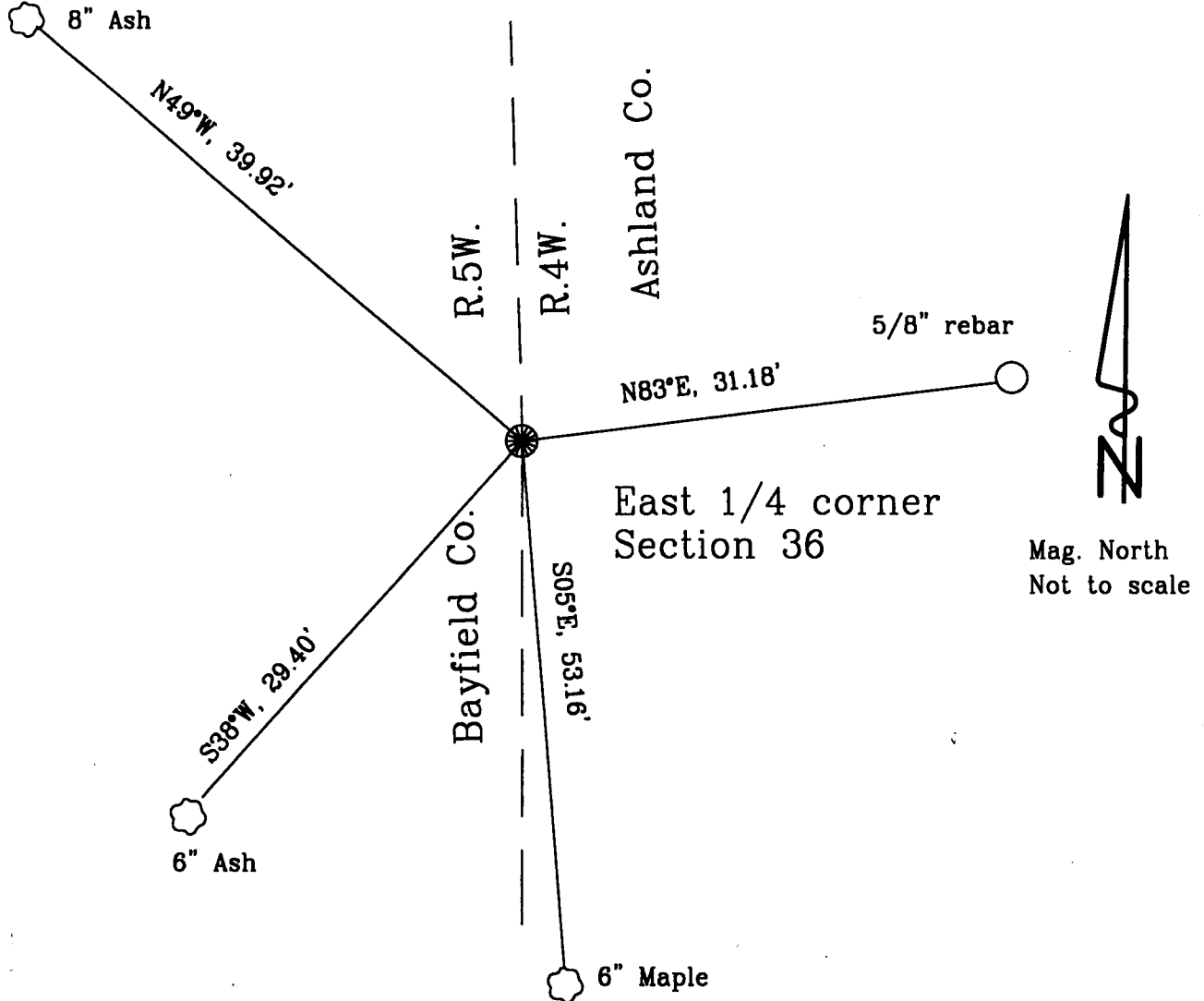
*P. J. ...*

*204*

(c) In the plan view drawing below, provide reference ties to at least 4 witness monuments, or if the location is within a municipality, to at least 2 witness monuments. (Witness monuments shall be made of concrete, natural stone, iron or other equally durable material.)

(d) Show a plan view drawing depicting the relevant monuments and reference ties which is sufficient in detail to enable accurate relocation of the corner monument if the corner is disturbed. Indicate north.

Witnessed corner as follows: Bearing trees are blazed and marked with bearing tree tags. Distances are measured to 50 penny nails.



(i) I, Larry T. Nelson, Registration # 1276 certify that the corner location shown on this record was determined by me or under my direction and control and that this U.S. Public Land Survey Monument Record is correct and complete to the best of my knowledge and belief.



*Larry T. Nelson*  
Signature

1/10/98  
Date

NELSON  
SURVEYING  
INCORPORATED

PROFESSIONAL LAND SURVEYING SERVICES

101 W. MAIN STREET

TELEPHONE (715) 682-2692

ASHLAND, WI. 54806

210