

BAYFIELD COUNTY LAND SURVEY MONUMENT RECORD

INSTRUCTIONS: This record shall show the location of the corner and shall include all of the following nine elements (a through i).

(a) Identify the corner by reference to the U.S. land survey system.
 ○ = Corner monument restored.

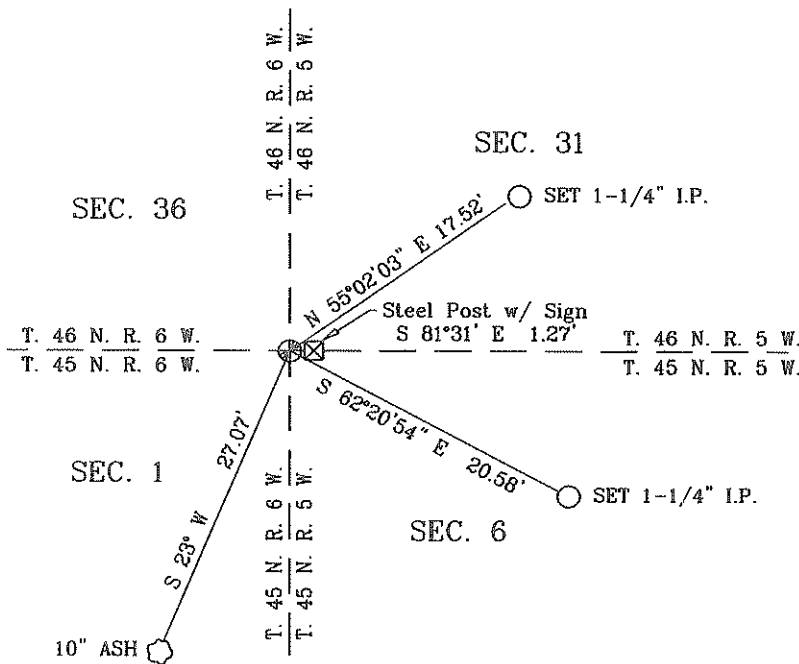
The Southeast corner of Section 36, T. 46 N., R. 6 W., in the Town of Mason, Bayfield County, Wisconsin.

(b) Describe any record evidence, monument evidence, occupational evidence, testimonial evidence or any other material evidence you considered, and whether the monument was found or placed.

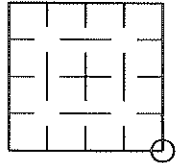
On December 6, 2011, I found a 3" alum. cast monument (WI Division of Highways Monument) at the southeast corner of Section 36. Corner was set by K. McConnell, RLS No. 1007, in 1971. The monument fits distance calls to the centerline of U.S.H. No. 63 (61.7'± east of c/l) and old railroad grade (79'± north of grade) as noted on the CLCR by K. McConnell. Refer to said CLCR filed in the Bayfield County Land Records Office for more information.
 Top of the monument has been broken off. Remaining portion of monument is vertical, 1.2'± below ground level.

BASE STATION: #304 (BURHO) LATITUDE: 46°22'18.20699" N LONGITUDE: 91°04'42.11976" W
 FOUND CORNER: LATITUDE: 46°24'49.01370" N LONGITUDE: 91°03'01.90204" W

(c & d) Show a plan view drawing depicting the relevant monuments and reference ties which is sufficient in detail to enable accurate relocation of the corner monument if the corner is disturbed. Indicate north.
 Witnessed corner as follows: Bearing trees are blazed. Distances are measured to a nail in the tree.



SECTION 36



CORNER NUMBER

4606360000
 T R SEC ROW COL

Magnetic North
 Not To Scale

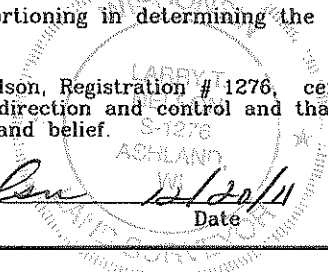
(e) Describe any material discrepancy between the location of the corner as restored or re-established and the location of that corner as previously restored or re-established by distance and direction. Show the discrepancy on the plan view drawing under (d) above. Show the distances between the corner as previously restored or re-established and (1) the corner as restored or re-established, and (2) to at least 2 of the witness monuments shown on the drawing in (d), above. N/A

(f) Was the corner restored through acceptance of (1) an obliterated evidence location, or, (2) a found perpetuated location? FOUND PERPETUATED LOCATION

(g & h) Was the corner re-established through lost corner proportionate methods? If so, show the method, including the directions and distances to other public land survey corners used as evidence or or used for proportioning in determining the corner location. N/A

(i) I, Larry T. Nelson, Registration # 1276, certify that the corner location shown on this record was determined by me or under my direction and control and that this U. S. Public Land Survey Monument Record is correct to the best of my knowledge and belief.

Larry T. Nelson
 Signature Date



SECTION 36, T. 46 N., R. 6 W.
 CORNER IDENTIFICATION NUMBER: 4606360000

NELSON SURVEYING INCORPORATED
 101 W. MAIN STREET
 SUITE 207
 ASHLAND, WISCONSIN 54806
 (715) 682-2692
 FAX: (715) 682-5100
 SURVEYING NORTHERN WISCONSIN SINCE 1954
 WWW.NELSONSURVEYING.COM ©

CERTIFIED LAND CORNER RESTORATION

Index No. 42

State of Wisconsin

County of Bayfield } ss.

I, Karl O. McConnell, do hereby certify that on the 5 day of September, 1945, I found evidence of the North West corner of Section 6 Township 45, North, Range 5 West, Fourth Principal Meridian, as described hereon; and that from this evidence I established a new monument and accessories as described hereon to perpetuate the original location of this corner.

Resident witnesses:

Robert Lang

William Dandeneau

History of original corner establishment:
Local resident showed Division of Highways Survey personnel the approximate location of a Kingbolt that was set to perpetuate the northwest corner of Section 6 many years ago.

Description of corner evidence found:

A Kingbolt was located by Division of Highways Survey crew (M. Olsen, K. McConnell and D. Joyal) in the fall of 1945, and tied into the survey line for U.S.H. 63 survey.

Description of monument and accessories I established to perpetuate the original location of this corner.

1945 survey line recovered in 1971, corner reset S. 89° 45' E. 60.5' from Station 679 + 57.3, as recorded in survey notes of U.S.H. 63 (1947) N. 1° 25' E. Standard Wisconsin Division of Highways Monument was set. Bearing of ϵ U.S.H. 63 (1947) N. 1° 25' E. Set the following ties. N 84° E(Mag) 56.20' to spike in 10" poplar. S 51° E(Mag) 39.73' to spike in telephone pole. S 12° E(Mag) 82.00 to spike in power pole. Corner is 61.70'E. of 63 & 79' N. old R. R.

Dated at Superior, Wis, this 30 day of September, 1971

Signature Karl O. McConnell Title Survey Supervisor Registration No. 1007
(County Surveyor, Registered Land Surveyor, or other duly authorized official)

Office of Register of Deeds, County of Bayfield
Instrument was filed in this office for record on the 5 day of Sept., 1971
at 11 o'clock AM.
293916

Carole Seiler
(Register of Deeds)

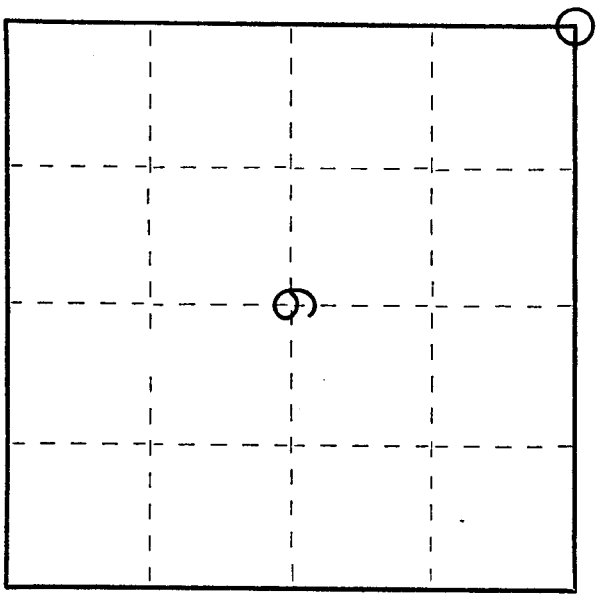
By Carole Seiler Deputy

6-45-5

CORNER NUMBER

46 F. 06 R. 36 Sec. 00 Row 00 Col.

FORM 985 H. C. MILLER CO., M.



○ = Corner monument restored.

4 5 6 7 8 9 10 11
F. R. Sec. Row Col.

State of Wisconsin }
County of Bayfield } ss.

I Karl O. McConnell, do hereby
certify that on the 27th day
of September, 1977, I found
evidence of the NW
corner of Section 6
Township 45
5, North, Range
4, Fourth Principal Meridian,
as described hereon; and that from this evidence
I established a new monument and accessories
as described hereon to perpetuate the original
location of this corner.

Resident witnesses:

R. Lang

W. Dandaneau

CERTIFIED LAND CORNER RESTORATION

History of original corner establishment:

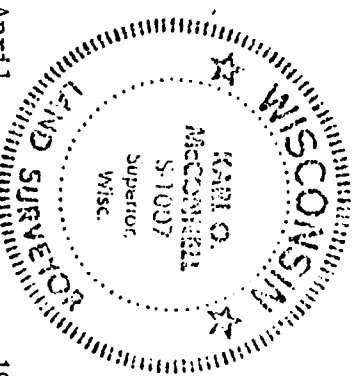
By A. C. Stuntz February 1857
9" spruce S. 15 W. 17 links
10" tamarack S. 54 E. 33 links

Description of corner evidence found:

1" king bolt
Verified by local property owner

Description of monument and accessories I established to perpetuate the original location of this corner.

Set standard Division of Highways monument
R.P. spike in 10" poplar N. 84° E. (mag.) 56.20'
R.P. spike in telegraph pole S. 51° E. (mag.) 39.73'
R.P. spike in power pole S. 12° E. (mag.) 82.00'



Dated at Superior, Wis., this 11th day of April, 1977

Signature Karl O. McConnell Title District 8 Survey Supervisor Registration No. 1007
(County Surveyor, Registered Land Surveyor, or other duly authorized official)

Office of Register of Deeds, County of BAYFIELD
Instrument was filed in this office for record on the 27th day of September, 1977 at 4 o'clock P.M.

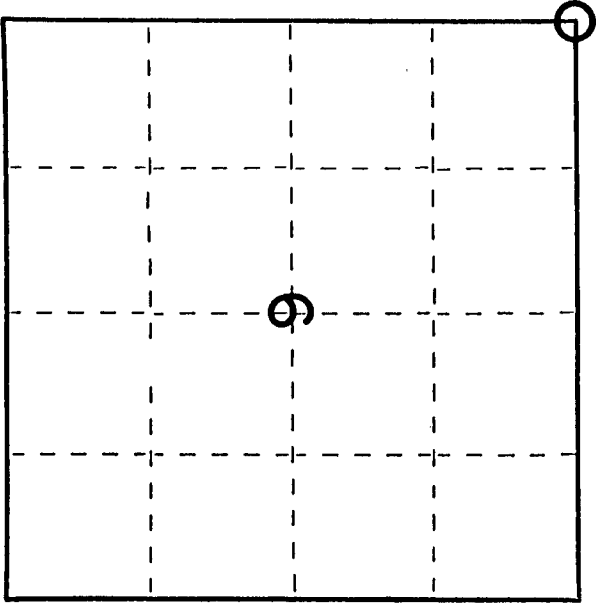
Otto Korbella
(Register of Deeds)

By Deputy

Index No.

VOL 1 PAGE 243

315300



○ = Corner monument restored.