

4 6 0 7 3 6 0 0 2 01  
T. R. Sec. Row Col.

CERTIFIED LAND CORNER RESTORATION

Index No. 23

History of original corner establishment: Original corner established in 1854 by Albert C. Stuntz, Government Deputy Surveyor.

Aspen 12" N23W 7 links •  
Hem. 8" S14W 6 links •

Description of corner evidence found:

Corner marked by a very old 4" squared and scribed wood post, surrounded by several large rocks. A. Hildebrandt, Party Chief, found this corner in 1936. He stated the wood post was old at that time. I found no remaining evidence of the original bearing trees. From the NE corner of T45N-R7W, I chained W. to this post and found the distance to be in close harmony with the record. An old marker post, with location tag dated 1936, hrs. N130°15'E, 9.0 feet.

Description of monument and accessories I established to perpetuate the original location of this corner.

Set a 2" inside diameter, 5 foot long, flanged bottom, galvanized wrought iron pipe, filled with concrete, capped with a 3" bronze tablet stamped to read: T45N, T46N, R7W, 1/4, 36, 1, S.212, 1960.

Blazed and scribed the following new bearing trees:

W. Pine 18" N43°E, 190.6 feet.  
Maple 4" N59°30'W 32.8 feet.  
Maple 4" S9°30'W 23.7 feet. (Location poster)

Set cedar post, with top 1 foot painted red, at monument.

Dated at Park Falls, Wis., this 16th day of March, 1961.

Signature: *[Signature]* Title: Registered Land Surveyor Registration No. 272  
(County Surveyor, Registered Land Surveyor, or other duly authorized official)

Office of Register of Deeds, County of \_\_\_\_\_, I hereby certify that the within instrument was filed in this office for record on the \_\_\_\_\_ day of \_\_\_\_\_, 1961 at \_\_\_\_\_ o'clock \_\_\_\_\_ M.

(Register of Deeds)

By: \_\_\_\_\_ Deputy

State of Wisconsin

County of Bayfield } ss.

I, Murvin G. Johnson, do hereby certify that on the 3rd day of November, 1960, I found evidence of the One Quarter corner of Sections 36 and 1 Township 45 and 46 North, Range 7 West, Fourth Principal Meridian, as described hereon; and that from this evidence I established a new monument and accessories as described hereon to perpetuate the original location of this corner. 229488

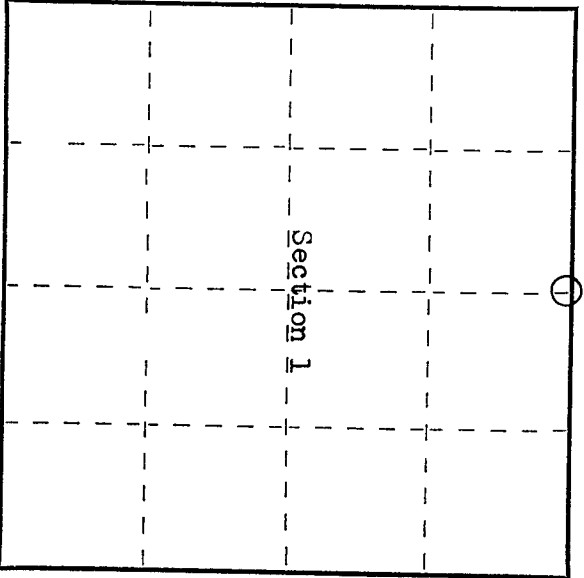
Resident witnesses: REGISTER'S OFFICE

Bayfield County, Wis.

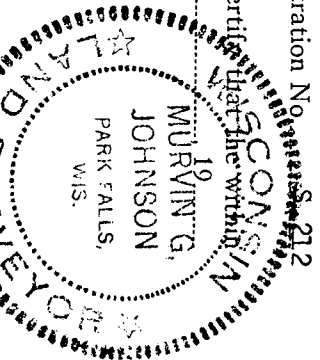
RECORDED AT 1962... M.

Vol. 1 of 211 Page 15

*[Signature]*  
REGISTER OF DEEDS



⊙ = Corner monument restored.

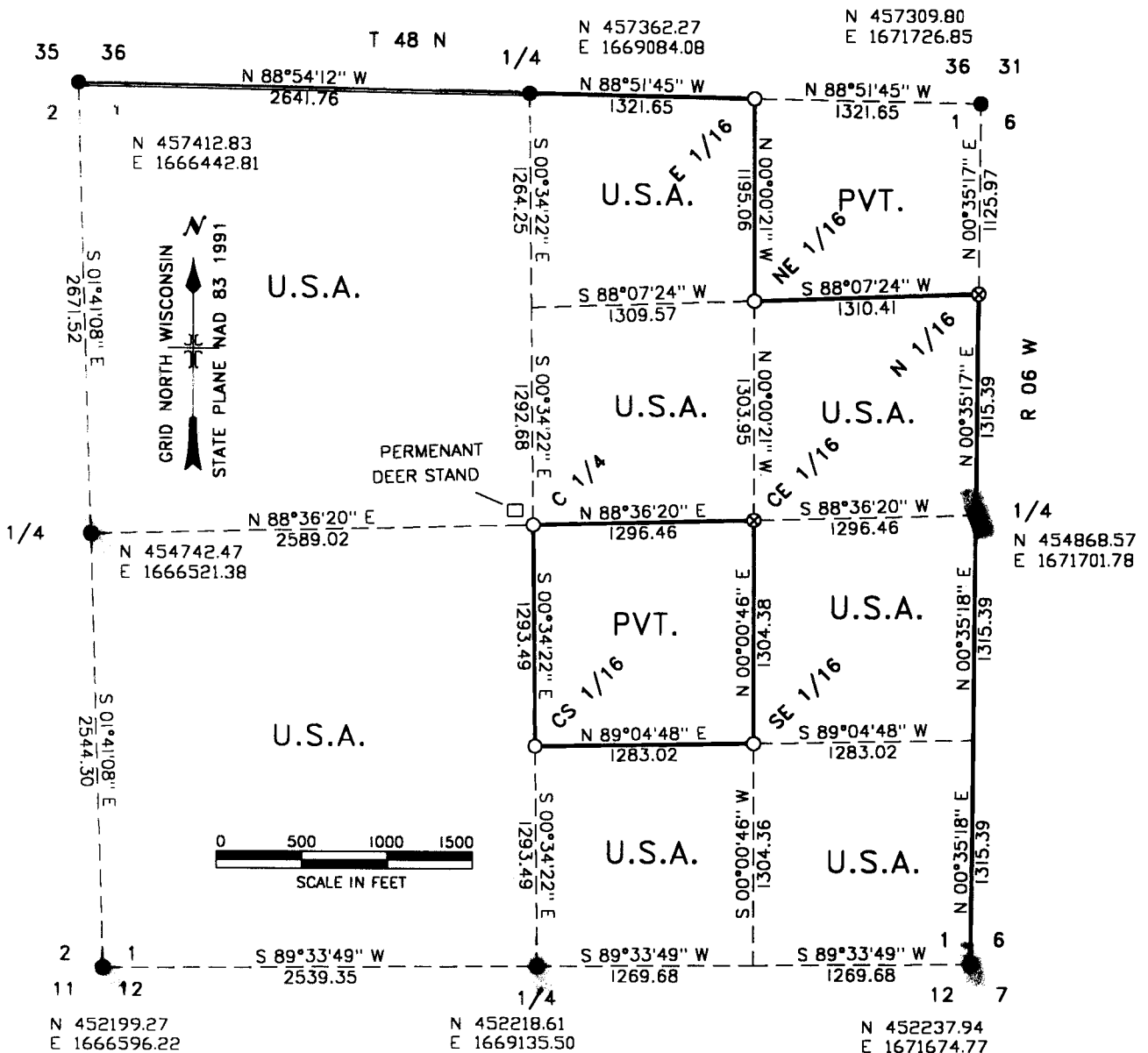




Stock No. 26273

MAP OF SURVEY

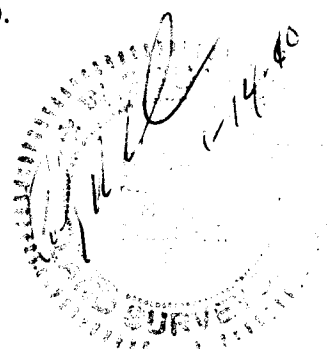
U.S. GOVERNMENT LANDS BEING THE WEST 1/2, THE SOUTH 1/2 SOUTHEAST 1/4, THE SOUTH 1/2 NORTHEAST 1/4, THE NORTHWEST 1/4 NORTHEAST 1/4, AND NORTHEAST 1/4 SOUTHEAST 1/4, SECTION 01, TOWNSHIP 45 NORTH, RANGE 07 WEST, BAYFIELD COUNTY, WISCONSIN.



LEGEND

- MONUMENT FOUND OR SET TO FOREST SERVICE AND BAYFIELD CO. STANDARD.  
U.S. PUBLIC LAND SURVEY MONUMENT RECORD ON FILE WITH BAYFIELD CO.
- ⊗ SET A 1" X 60" ALUMINUM DRIVE MONUMENT WITH A 2" ALUMINUM CAP.
- SET A 2" X 36" ALUMINUM PIPE MONUMENT WITH A 3" ALUMINUM CAP.
- LINE MARKED TO FOREST SERVICE STANDARD.

(N 426090) WISCONSIN NORTH ZONE STATE PLANE COORDINATES NAD 83 1991





Stock No. 26273

SECTION 01, T 45 N, R 07 W  
BAYFIELD COUNTY, WISCONSIN

THIS SURVEY WAS MADE BY THE U.S.D.A. FOREST SERVICE AT THE REQUEST OF THE WASHBURN RANGER DISTRICT OF THE CHEQUAMEGON-NICOLET NATIONAL FOREST. THE PURPOSE OF THIS SURVEY WAS TO RECOVER, RESTORE, ESTABLISH, MARK AND PERPETUATE THE BOUNDARIES AND CORNERS OF NATIONAL FOREST LANDS ON THE PERIMETER AND WITHIN SECTION 01, TOWNSHIP 45 NORTH, RANGE 07 WEST, BAYFIELD COUNTY, WISCONSIN.

ALBERT STUNTZ MADE THE ORIGINAL SURVEYS OF THE NORTH AND EAST LINES OF SECTION 01 IN 1854. DANIEL NORTON SURVEYED THE SOUTH AND WEST LINES IN 1858.

A. HILDEBRANT, CCC PARTY CHIEF RETRACED THE NORTH LINE OF SECTION 01 IN 1936. MURVIN JOHNSON, RLS #212, RETRACED THE NORTH LINE OF SECTION 01 IN 1960. NO OTHER RECORD OF SUBSEQUENT SURVEYS OF THE SECTION WERE FOUND.

THIS SURVEY WAS MADE USING REAL TIME KINEMATIC GPS. "SOUTH INO" AND "BURHO" GPS STATIONS WERE USED AS BASES FOR THIS SURVEY. TRUE LINE TRAVERSES WERE MADE USING AN ELECTRONIC TOTAL STATION INSTRUMENT. ERROR OF CLOSURE BETWEEN GPS CONTROLLED POINTS WAS BETTER THAN 1:5000.

BEARING TREES WERE BLAZED, SCRIBED, AND PAINTED RED. MEASUREMENTS TO BEARING TREES ARE TO ALUMINUM NAILS IN THE SIDE OF TREES ABOVE THE CENTER OF THE ROOT CROWN.

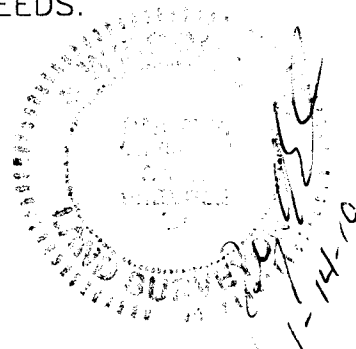
ENCROACHMENTS ON NATIONAL FOREST LANDS: A SUBSTANTIAL PERMANENT DEER STAND WAS FOUND NEAR THE SOUTHEAST CORNER OF THE SOUTHEAST 1/4 NORTHWEST 1/4 OF SECTION 01. A 10+ YEAR CLEAR CUT, TRAIL BUILDING AND NEWLY CREATED WILD LIFE OPENINGS WERE FOUND ALONG THE EAST LINE OF THE NE 1/4 SW 1/4 OF SECTION 01.

SURVEY CREW: RANDY R. ERICKSON, LAND SURVEYOR; GREG MAYER, CREW CHIEF; JASEN TEAL, SAWYER.

SURVEY WAS MADE IN SEPTEMBER 2009 THRU JANUARY 2010.

CORNERS RECOVERED

1. NORTHWEST CORNER OF SECTION 01, T 45 N, R 07 W.  
RECOVERED MONUMENT AS DESCRIBED ON DOCUMENT #229468, FILED 1-03-1962 BY RLS #212 WITH BAYFIELD COUNTY REGISTER OF DEEDS BEARING TREES ARE GOOD. SET A STEEL SIGN POST EAST 1.2 FT.
2. NORTH QUARTER CORNER SECTION 01, T 45 N, R 07 W.  
RECOVERED MONUMENT AS DESCRIBED ON DOCUMENT #229488, FILED 1-3-1962 BY RLS #212 WITH BAYFIELD COUNTY REGISTER OF DEEDS. MAPLE BT S 10° W 23.7 FEET IS GONE. OTHER BTS GOOD. MARKED A NEW BEARING TREE: MAPLE 8" S 48° E, 18.74 FEET. SET A STEEL SIGN POST EAST 1.8 FEET.
3. NORTHEAST CORNER SECTION 01, T 45 N, R 07 W.  
RECOVERED MONUMENT AS DESCRIBED ON DOCUMENT #223879, FILED IN 1961 BY RLS #212, WITH BAYFIELD COUNTY REGISTER OF DEEDS. BEARING TREES FROM 1960 ARE ALL GONE. NO NEW TREES AVAILABLE. NEW REFERENCES: GATE HINGE POST N 46° W 16.82 FEET, GATE HINGE POST N 56° E 11.85 FEET.





Stock No. 26273

### CORNERS RESTORED

1. WEST QUARTER CORNER OF SECTION 01, T 45 N, R 07 W.  
RESTORED CORNER AS DESCRIBED ON BAYFIELD COUNTY U.S. PUBLIC LAND SURVEY MONUMENT RECORD, FILED WITH BAYFIELD COUNTY IN FEBRUARY 2010 BY RLS #1897
2. EAST QUARTER CORNER OF SECTION 01, T 45 N, R 07 W.  
RESTORED CORNER AS DESCRIBED ON BAYFIELD COUNTY U.S. PUBLIC LAND SURVEY MONUMENT RECORD, FILED WITH BAYFIELD COUNTY IN FEBRUARY 2010 BY RLS #1897.
3. SOUTHWEST CORNER OF SECTION 01, T 45 N, R 07 W.  
RESTORED CORNER AS DESCRIBED ON BAYFIELD COUNTY U.S. PUBLIC LAND SURVEY MONUMENT RECORD, FILED WITH BAYFIELD COUNTY IN FEBRUARY 2010 BY RLS #1897.
4. SOUTH QUARTER CORNER SECTION 01, T 45 N, R 07 W.  
RESTORED CORNER AS DESCRIBED ON BAYFIELD COUNTY U.S. PUBLIC LAND SURVEY MONUMENT RECORD, FILED WITH BAYFIELD COUNTY IN FEBRUARY 2010 BY RLS #1897.
5. SOUTHEAST CORNER SECTION 01, T 45 N, R 07 W.  
RESTORED CORNER AS DESCRIBED ON BAYFIELD COUNTY U.S. PUBLIC LAND SURVEY MONUMENT RECORD, FILED WITH BAYFIELD COUNTY IN FEBRUARY 2010 BY RLS #1897.

### CORNERS ESTABLISHED

1. EAST 1/16 CORNER NORTH LINE OF SECTION 01, T 45 N, R 07 W.  
ESTABLISHED CORNER MID POINT ON LINE BETWEEN THE NORTH 1/4 AND THE NORTHEAST CORNER OF SECTION 01. SET A 2" X 36" ALUMINUM PIPE MONUMENT WITH A 3" ALUMINUM CAP STAMPED TO IDENTIFY THE CORNER. MONUMENT EXTENDS 6" ABOVE GROUND.  
MARKED BEARING TREES:
 

ASH	4"	S 72° E	8.60 FEET
ASH	6"	S 47° E	25.73 FEET
ASH	5"	N 83° W	36.18 FEET
STEEL SIGN POST		SOUTH	0.9 FEET
2. NORTHEAST 1/16 CORNER SECTION 01, T 45 N, R 07 W.  
ESTABLISHED CORNER AT INTERSECTION OF STRAIGHT LINES BETWEEN OPPOSING 1/16 CORNERS ON THE PERIMETER OF THE NORTHEAST 1/4 OF SECTION 01. SET A 2" X 36" ALUMINUM PIPE MONUMENT WITH A 3" ALUMINUM CAP STAMPED TO IDENTIFY THE CORNER. MONUMENT EXTENDS 7" ABOVE GROUND. MONUMENT FALLS 37.5 FEET NORTH OF AN OLD EAST - WEST FENCE. MARKED BEARING TREES:
 

ASH	7"	S 31° E	30.38 FEET
ASH	6"	S 22° W	25.57 FEET
WHITE PINE	21"	N 63° W	88.15 FEET
STEEL SIGN POST		NORTH	0.6 FEET
3. NORTH 1/16 CORNER EAST LINE OF SECTION 01, T 45 N, R 07 W.  
ESTABLISHED CORNER BY SINGLE PROPORTIONATE MEASURE BETWEEN THE EAST 1/4 AND NORTHEAST CORNERS OF SECTION 01. SET A 1" X 60" ALUM. DRIVE MONUMENT WITH A 2" ALUMINUM CAP STAMPED TO IDENTIFY THE CORNER. MONUMENT EXTENDS 9" ABOVE GROUND.  
MARKED BEARING TREES:
 

ASH	7"	N 41° W	13.11 FEET
ASH	7"	S 71° W	14.04 FEET
ASH	12"	S 25° W	37.80 FEET
STEEL SIGN POST		WEST	0.8 FEET





Stock No. 26273

4. CENTER QUARTER CORNER, SECTION 01, T 45 N, R 07 W.  
ESTABLISHED CORNER AT INTERSECTION OF STRAIGHT LINES BETWEEN  
OPPOSING 1/4 CORNERS ON THE PERIMETER OF SECTION 01. SET A  
2" X 36" ALUMINUM MONUMENT WITH A 3" ALUMINUM CAP STAMPED TO  
IDENTIFY THE CORNER. MONUMENT EXTENDS 5" ABOVE THE GROUND.  
NO BEARING TREES AVAILABLE. SET A STEEL SIGN POST SOUTH  
1.2 FEET.

MEASURED N 50° W, 77.5 FEET TO THE SOUTHEAST POST OF AN  
8' X 8' PERMANENT DEER STAND. (TO BE MOVED)

5. CENTER EAST 1/16 CORNER SECTION 01, T 45 N, R 07 W.  
ESTABLISHED CORNER MID POINT ON LINE BETWEEN THE CENTER 1/4  
AND THE EAST 1/4 CORNERS OF SECTION 01. SET A 1" X 60"  
ALUMINUM DRIVE MONUMENT WITH A 2" ALUMINUM CAP STAMPED TO  
IDENTIFY THE CORNER. MONUMENT EXTENDS 12" ABOVE THE SWAMP.  
MARKED BEARING TREES:

ASH	5"	N 35° W	8.57 FEET
ASH	5"	N 65° E	8.92 FEET
CEDAR	14"	S 18° E	77.37 FEET
STEEL SIGN POST		WEST	0.7 FEET

6. CENTER SOUTH 1/16 CORNER SECTION 01, T 45 N, R 07 W.  
ESTABLISHED CORNER MID POINT ON LINE BETWEEN THE CENTER 1/4  
AND SOUTH 1/4 CORNERS OF SECTION 01. SET A 2" X 36" ALUMINUM  
PIPE MONUMENT WITH A 3" ALUMINUM CAP STAMPED TO IDENTIFY THE  
CORNER. MONUMENT EXTENDS 3" ABOVE GROUND. MARKED BT's:

MAPLE	13"	N 82° E	14.75 FEET
MAPLE	6"	S 50° E	46.57 FEET
MAPLE	6"	N 88° W	43.09 FEET
STEEL SIGN POST		EAST	0.7 FEET

7. SOUTHEAST 1/16 CORNER SECTION 01, T 45 N, R 07 W.  
ESTABLISHED CORNER AT INTERSECTION OF STRAIGHT LINES BETWEEN  
OPPOSING 1/16 CORNERS ON THE PERIMETER OF THE SOUTHEAST 1/4  
OF SECTION 01. SET A 2" X 36" ALUMINUM PIPE MONUMENT WITH A  
3" ALUMINUM CAP STAMPED TO IDENTIFY THE CORNER. MONUMENT  
EXTENDS 6" ABOVE GROUND. MARKED BEARING TREES:

MAPLE	10"	S 79° W	17.48 FEET
MAPLE	11"	S 21° E	25.60 FEET
MAPLE	8"	N 43° W	19.72 FEET
STEEL SIGN POST		NORTH	1.0 FEET

## SURVEYORS AFFIDAVIT

STATE OF WISCONSIN)  
COUNTY OF BAYFIELD) SS

I RANDY ERICKSON, LAND SURVEYOR FOR THE U.S.D.A. FOREST SERVICE  
AND A REGISTERED LAND SURVEYOR IN THE STATE OF WISCONSIN DO  
HEREBY CERTIFY THAT I HAVE SURVEYED AND SUBDIVIDED SECTION 01,  
TOWNSHIP 45 NORTH, RANGE 07 WEST, 4TH P.M., BAYFIELD COUNTY,  
WISCONSIN. DURING THIS SURVEY I HAVE COMPLIED WITH THE RULES FOR  
THE DIVISION OF THE PUBLIC LANDS AND APPLICABLE STATE RULES. THE  
MAP OF SURVEY AND ACCOMPANYING NOTES IS A CORRECT AND ACCURATE  
REPRESENTATION OF THE SURVEY TO THE BEST OF MY KNOWLEDGE AND  
BELIEF.

RANDY R. ERICKSON  
WIS. REG. L.S. #1897

DATE: 01-14-2010

