

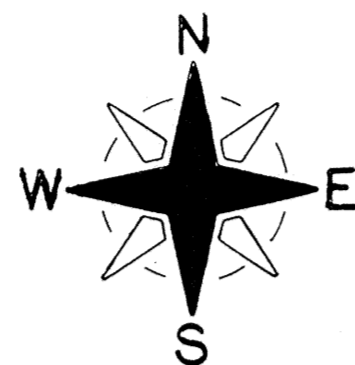
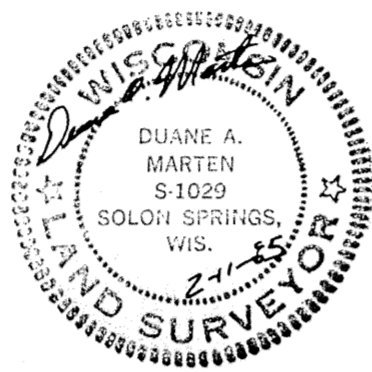
# OTTER BAY CONDOMINIUMS

LOCATED IN  
GOV'T. LOT 16, SEC. 33-T44N-R7W, TOWN OF  
DRUMMOND, BAYFIELD COUNTY, WISCONSIN.

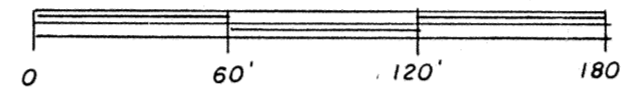
BEARINGS ARE REFERENCED TO E-W 1/4 LINE SEC. 33.  
BEARING S89°-32'W.

### LEGEND

- ⊙ = EX. IRON SURVEY MON.
- = SET 1" X 24" PIPE - MIN. WT. 1.13 LBS./LIN. FT.
- ⊕ = OVER HEAD UTILITY POLE.
- = UNDER GROUND UTILITY.
- △ = ANTENNA TOWER
- = SEPTIC VENTS
- ⊕ = WELLS
- ⊕ = SEPTIC TANK
- ▨ = FUTURE EXPANSION



SCALE - 1" = 60'



**SURVEYOR'S NOTE:**  
EX. SEPTIC TANKS AND DRAIN FIELDS ARE LIMITED COMMON AREAS ALONG WITH SUFFICIENT LAND ADJACENT TO EACH SEPTIC TANK AND DRAIN FIELD FOR FUTURE EXPANSION AND REPAIR OF SAME.

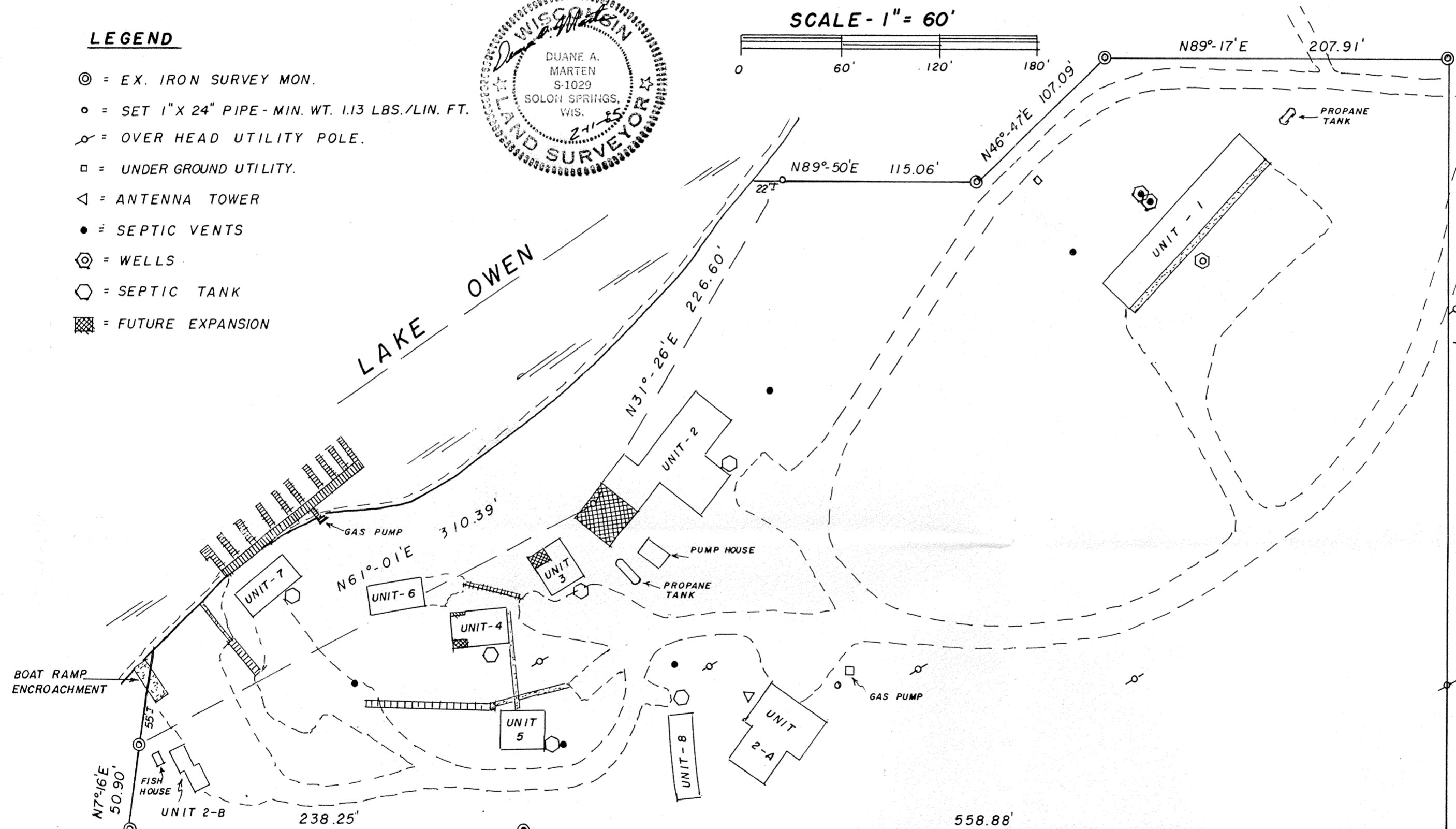
**SURVEYOR'S CERTIFICATE:**  
I, Duane A. Marten, Registered Land Surveyor, hereby certify that by the order and under the direction of George DuMont, I have surveyed and mapped OTTER BAY CONDOMINIUMS, located in Gov't. Lot 16, Sec. 33-T44N-R7W, Bayfield County, Wisconsin, bounded and described as follows:  
Commencing at the E 1/4 corner of said Sec. 33; thence S89°-32'W along the E-W 1/4 line, 2054.21 feet to the point of beginning; thence continuing S89°-32'W, 797.13 feet; thence N70°-16'E, 50.90 feet to a point 55 feet, more or less, from the water's edge of Lake Owen; thence N61°-01'E along a meanderline, 310.39 feet; thence N31°-26'E along a meanderline, 226.60 feet to a point 22 feet, more or less, from the water's edge of Lake Owen; thence N89°-50'E, 115.06 feet; thence N46°-47'E, 107.09 feet; thence N89°-17'E, 207.91 feet; thence South, 464.01 feet to the North-South Quarter line and the point of beginning.  
Including all lands lying between the above described meander line and the water's edge of Lake Owen. Said parcel contains 6.0 acres of land, more or less.  
Subject to all easements and reservations of record.

Dated this 11 day of Feb., 1985.

*Duane A. Marten*

DUANE A. MARTEN, REGISTERED LAND SURVEYOR, S-1029  
VACATIONLAND SURVEYOR'S, INC.  
SOLON SPRINGS, WIS.

APPROVED: BAYFIELD CO. ZONING COMM.  
DATED: 30 MAY 1985  
DAVE LEE ADM.



N7°-16'E  
50.90'

UNIT 2-B  
238.25'

N61°-01'E  
310.39'

S89°-32'W

797.13'

558.88'

N31°-26'E  
226.60'

N89°-50'E  
115.06'

N46°-47'E  
107.09'

N89°-17'E

207.91'

SOUTH  
464.01'

S89°-32'W

2054.21'

E 1/4 CORNER  
SEC. 33-T44N-R7W

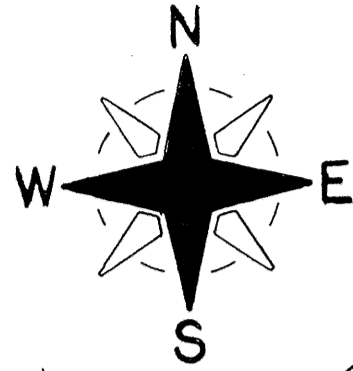
EX. 3/4" PIPE  
SET IN ROCKS

CENTER CORNER  
EX. BRASS CAP SET  
IN CONCRETE

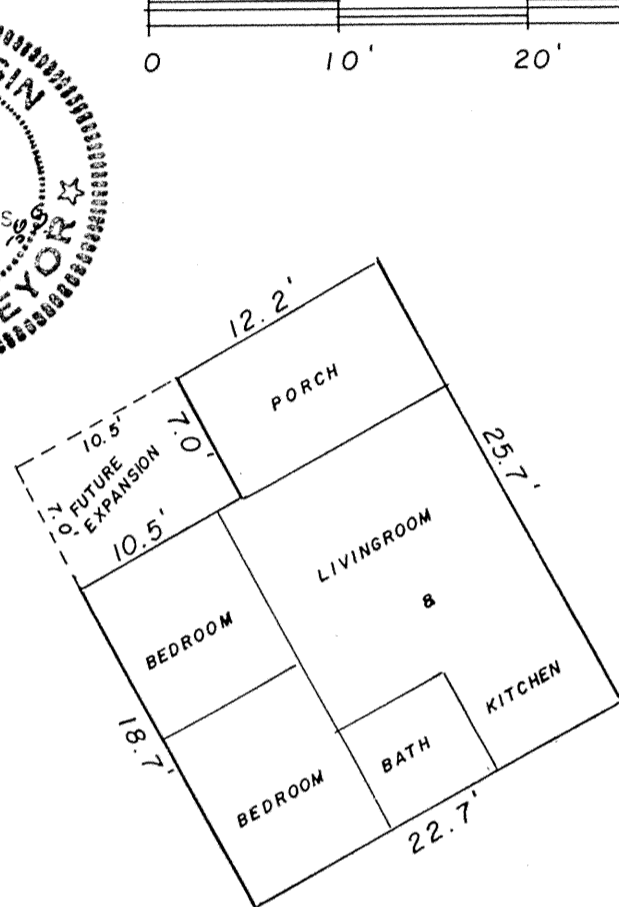
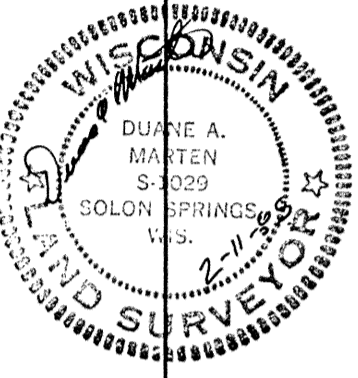
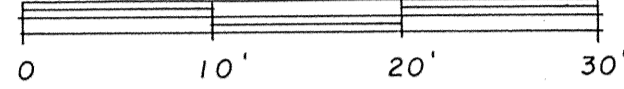
REGISTER'S OFFICE  
Bayfield County, Wis.  
RECORDED AT 3 P. M.  
ON JUL 11 1985  
Doc. No. 359932  
REGISTER OF DEEDS

# OTTER BAY CONDOMINIUMS

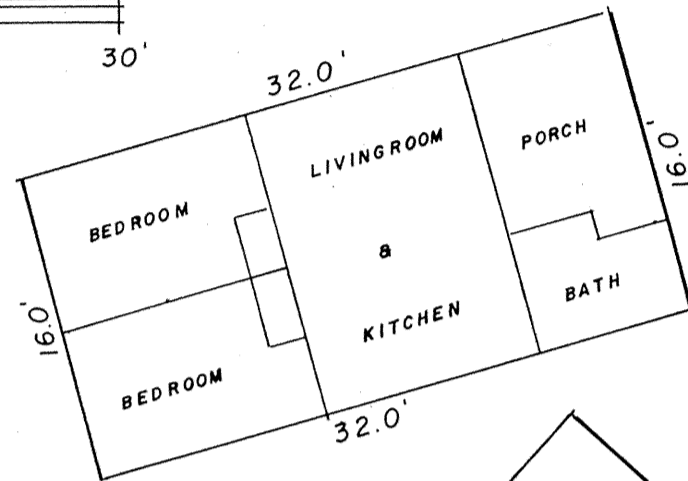
BAYFIELD COUNTY



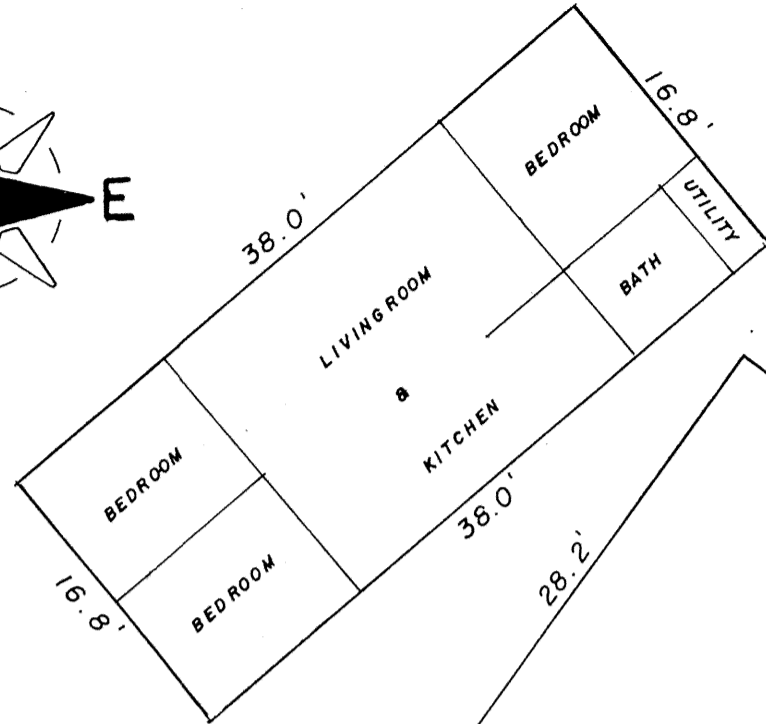
SCALE - 1" = 10'



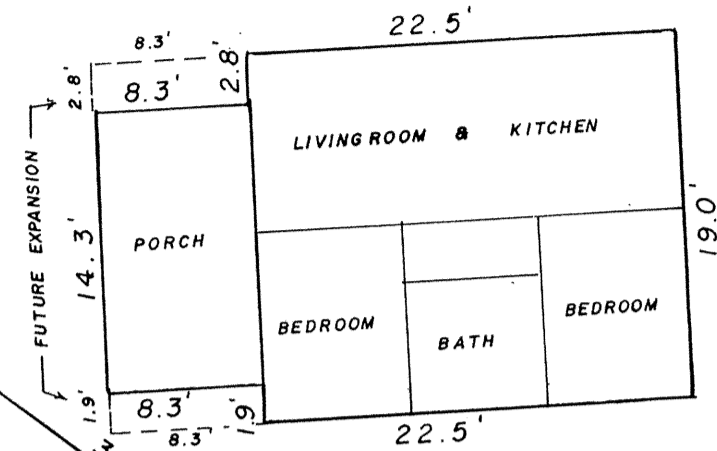
**UNIT 3**  
509 SQ. FT.



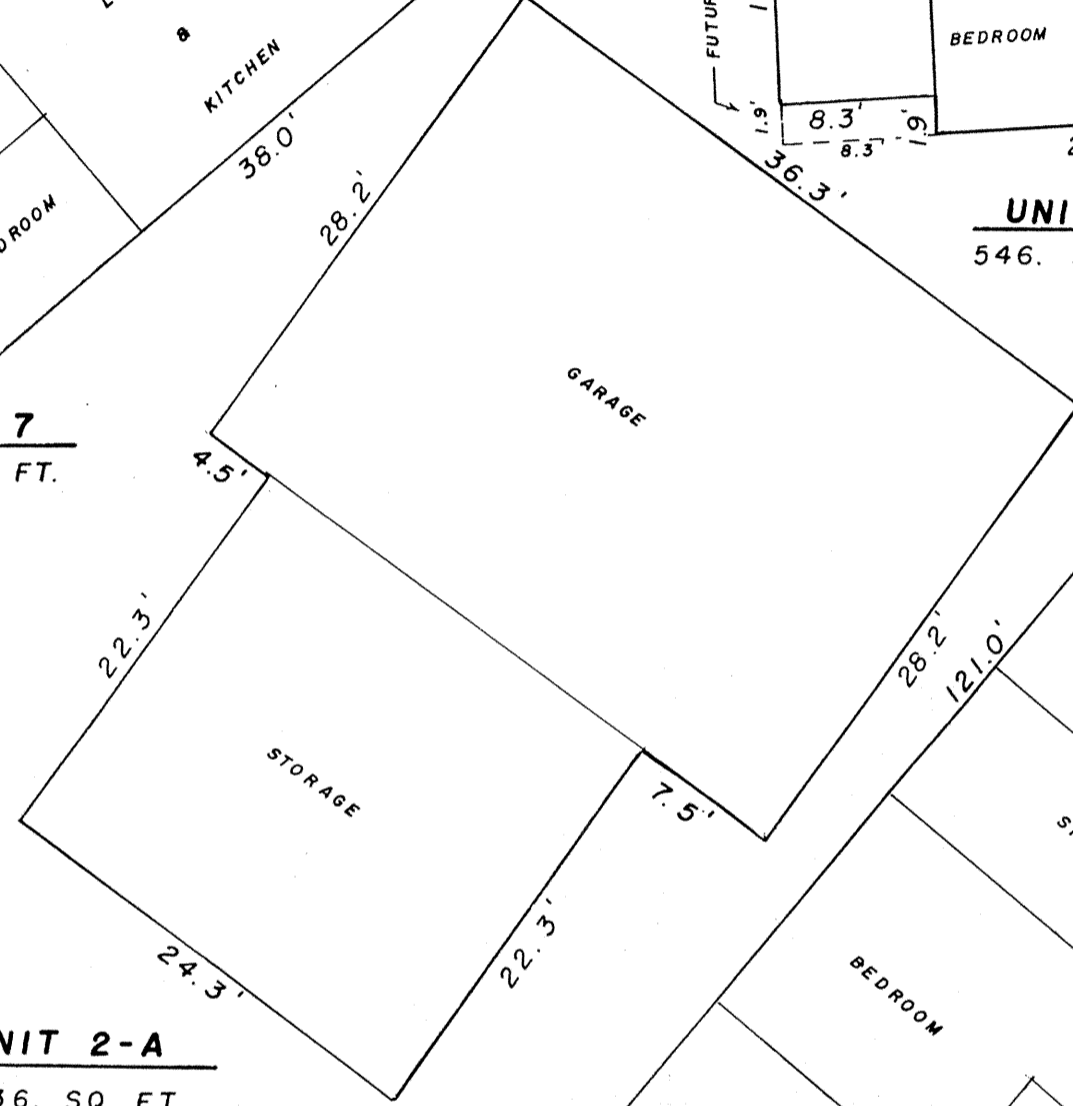
**UNIT 6**  
512 SQ. FT.



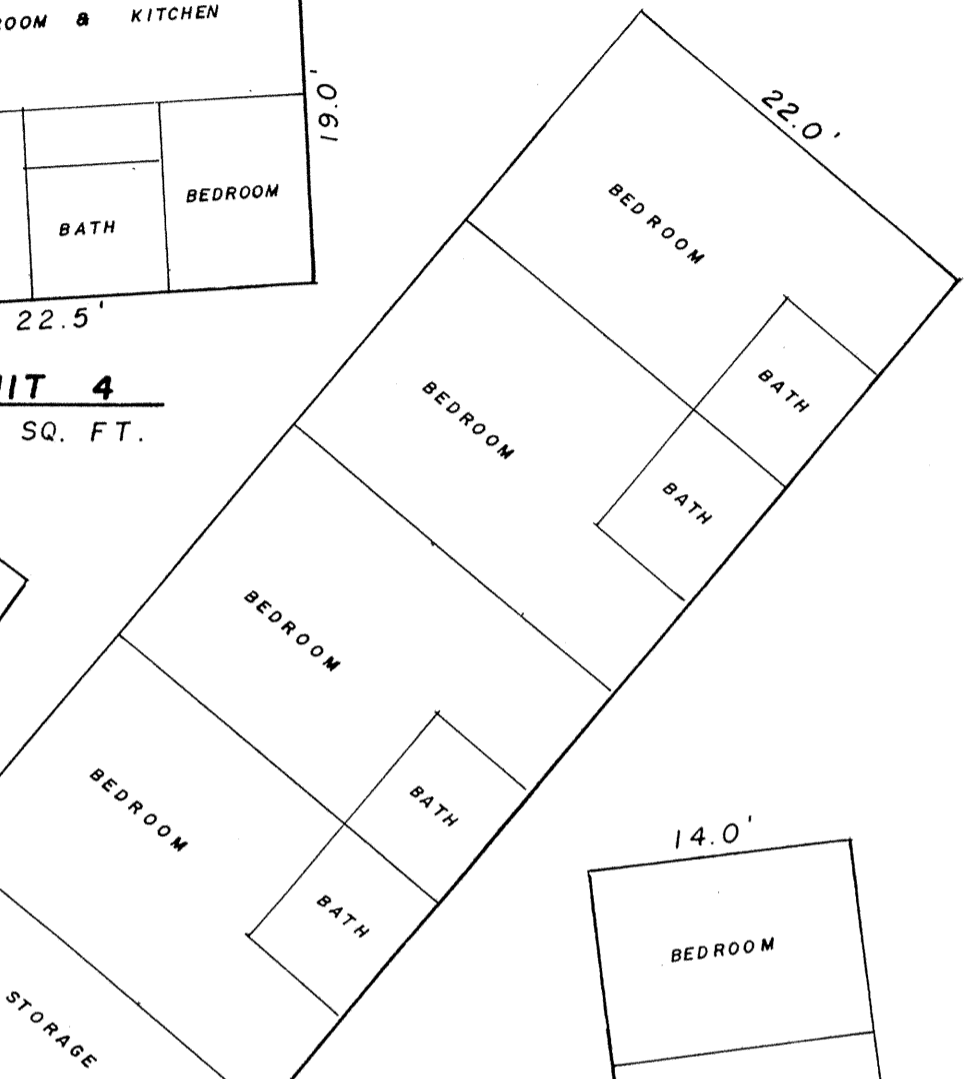
**UNIT 7**  
638 SQ. FT.



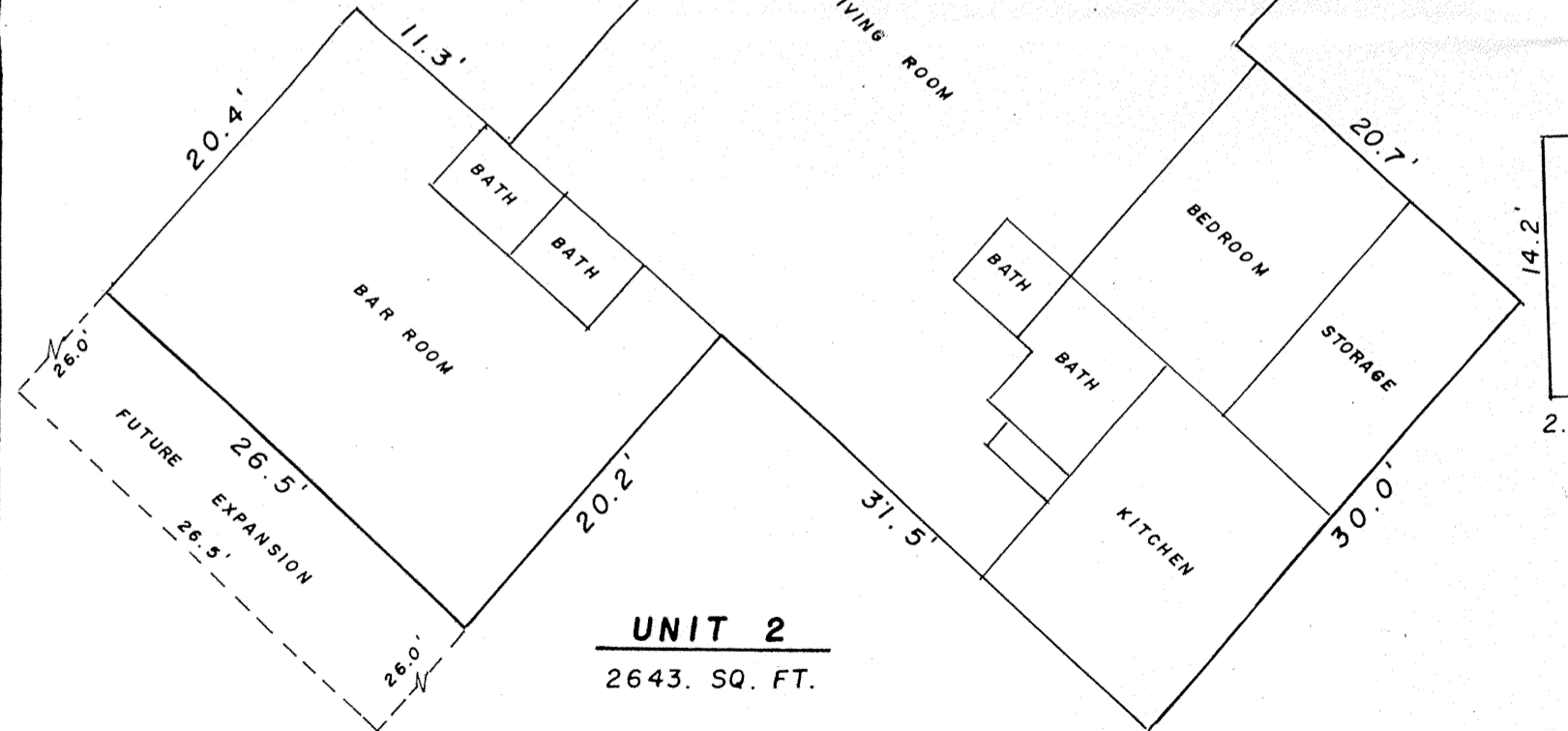
**UNIT 4**  
546 SQ. FT.



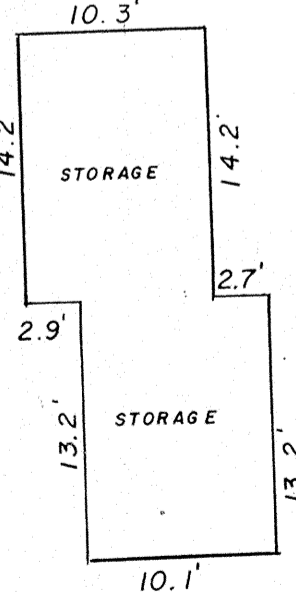
**UNIT 2-A**  
1536 SQ. FT.



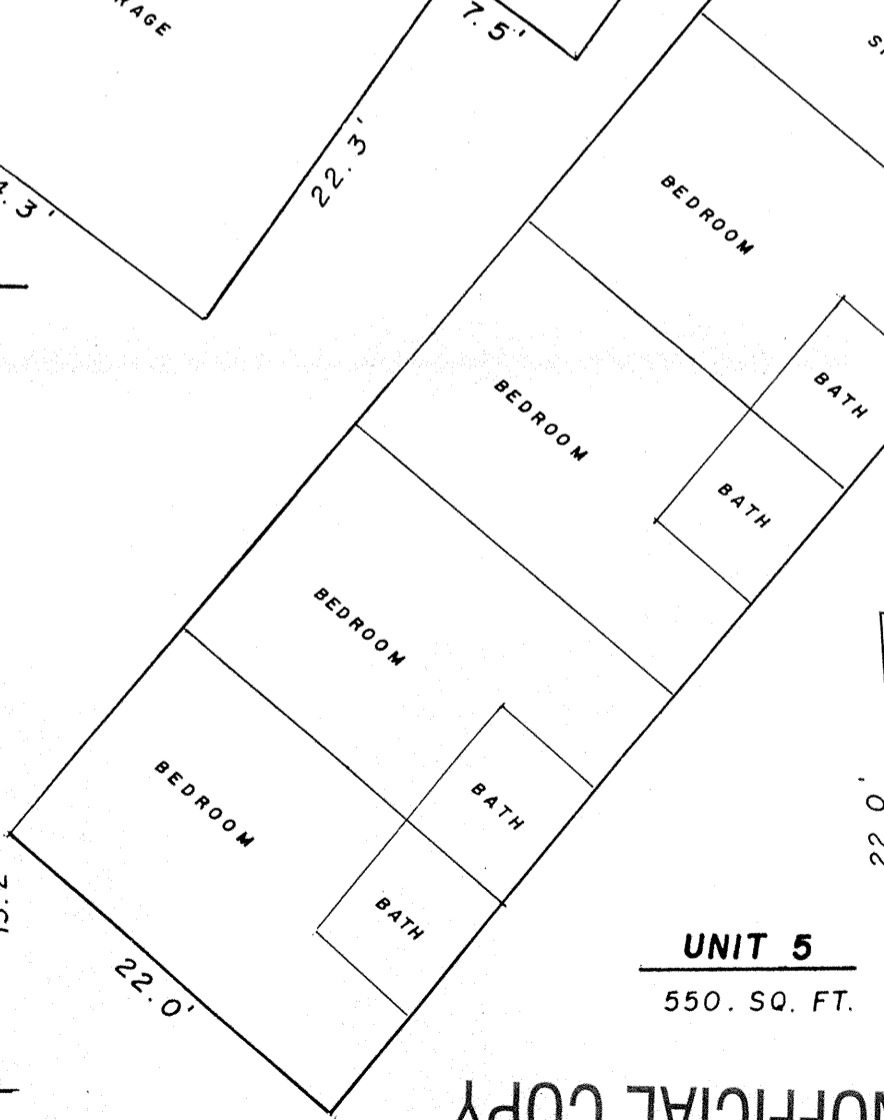
**UNIT 1**  
2662 SQ. FT.



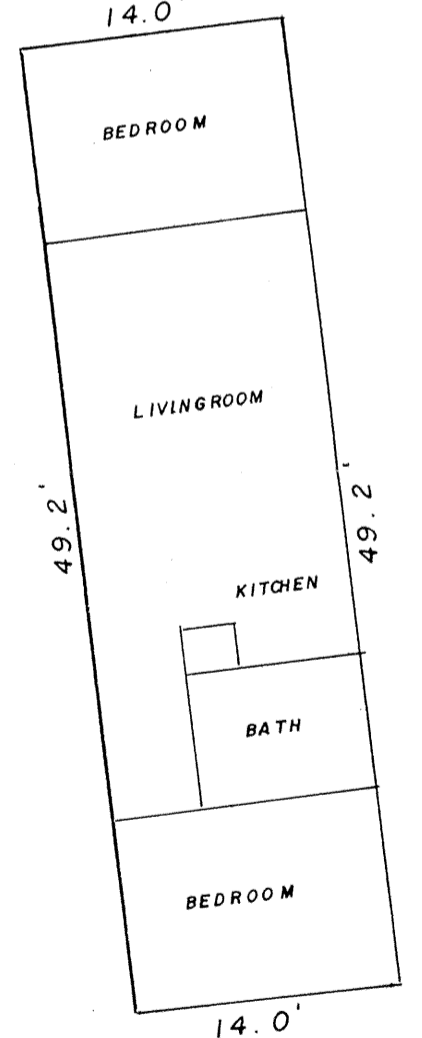
**UNIT 2**  
2643 SQ. FT.



**UNIT 2-B**  
270 SQ. FT.



**UNIT 5**  
550 SQ. FT.



**UNIT 8**  
686 SQ. FT.

UNOFFICIAL COPY