

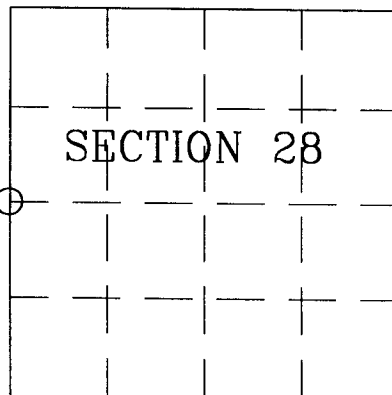
4706292000
T R SEC ROW COL

BAYFIELD COUNTY LAND SURVEY MONUMENT RECORD

Identify the corner by reference to the U.S. land survey system.

○ = Corner monument restored.

WEST 1/4 CORNER OF SECTION 28, T. 47 N.,
R. 6 W., IN THE TOWN OF KEYSTONE, BAYFIELD
COUNTY, WISCONSIN

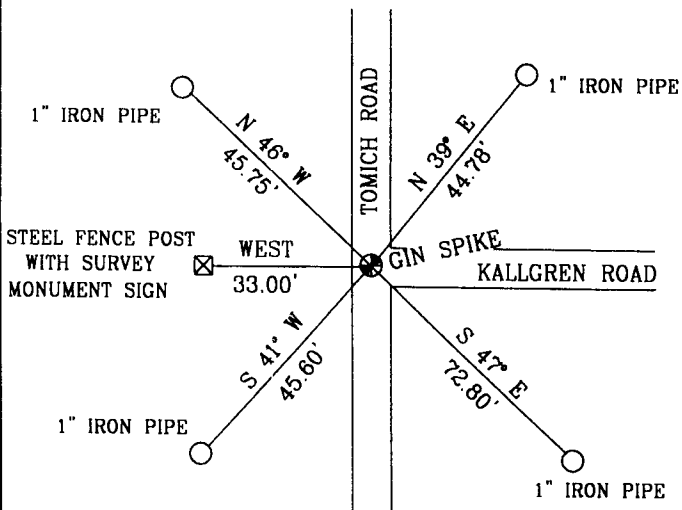


Describe any record evidence, monument evidence, occupational evidence, testimonial evidence, or any other material evidence you considered, and whether the monument was found or placed.

Set gin spike at the intersection of the centerlines of Kallgren Road and Tomich Road. This location fits harmoniously with current land use lines.

Provide plan view drawing.

Witnessed corner as follows: Bearing trees are blazed where appropriate. Distances are measured to nails in the side of the blazed tree.



Was the corner restored through acceptance of

- an obliterated evidence location
- found perpetuated location

PATRICIA A OLSON
BAYFIELD COUNTY, WI
REGISTER OF DEEDS

2004R-492831

07/08/2004 1:00 PM



Mag. North
Not to scale

NO FEE
4 LCR 536
Pages

0.00

1

Describe any material discrepancy between the location of the corner as restored or re-established and the location of that corner as previously restored or re-established by distance and direction. Show the discrepancy on the plan view drawing above. Show the distances between the corner as previously restored or re-established and (1) the corner as restored or re-established, and (2) to at least 2 of the witness monuments shown on the drawing above.

N/A

Was the corner re-established through lost corner proportionate methods? If so, show the method, including the directions and distances to other public land survey corners used as evidence or used for proportioning in determining the corner location.

N/A

I, Larry T. Nelson, Registration #1276, certify that the corner location shown on this record was determined by me or under my direction and control and that this U.S. Public Land Survey Monument Record is correct and complete to the best of my knowledge and belief.

Larry T. Nelson
Signature

Date



SECTION 28, T. 47 N., R. 8 W.

NELSON
SURVEYING
INCORPORATED
SURVEYING NORTHERN WISCONSIN SINCE 1954

101 W. MAIN STREET
SUITE 207
ASHLAND, WISCONSIN 54806
(715) 682-2692
FAX: (715) 682-5100

WWW.NELSONSURVEYING.COM ©

536