

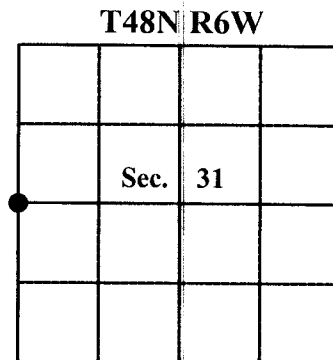
4807362000  
 T R SEC ROW COL

# U.S. PUBLIC LAND SURVEY MONUMENT RECORD

Note: This form is intended and designed to fulfill all requirements of Wisconsin Administrative Code, Chapter A-E 7.08, U.S. Public Land Survey Record (3) (a)(b)(c)(d)(e)(f)(g)(h)(i).

a) Identify the corner by reference to the U.S. public land survey system.

Corner \_\_\_\_\_ West Quarter \_\_\_\_\_  
 Section \_\_\_\_\_ 31 \_\_\_\_\_  
 Township \_\_\_\_\_ 48 \_\_\_\_\_ North  
 Range \_\_\_\_\_ 6 \_\_\_\_\_ West  
 Town/City/Village \_\_\_\_\_ Barksdale \_\_\_\_\_  
 Bayfield County \_\_\_\_\_



● = Corner Monument Restored

b) Describe any record evidence, monument evidence, occupational evidence, testimonial evidence, or any other material evidence you considered, and whether the monument was found or placed.

Ulteig Engineers recovered a 2-inch pipe with stamped brass cap dated 1933. This corner was monumented as part of a dependent resurvey of Township 48 North, Range 6 West. The monument was found in good condition. New reference ties were established as shown on the plan view sketch.

c & d) Provide plan view drawing on reverse side.

e) Describe any material discrepancy between the location of the corner as restored and the location of the corner as previously restored or reestablished. Show the discrepancy on the plan view drawing.

None

f) Was the corner restored through acceptance of an obliterated location or a found perpetuated location?

A found perpetuated location

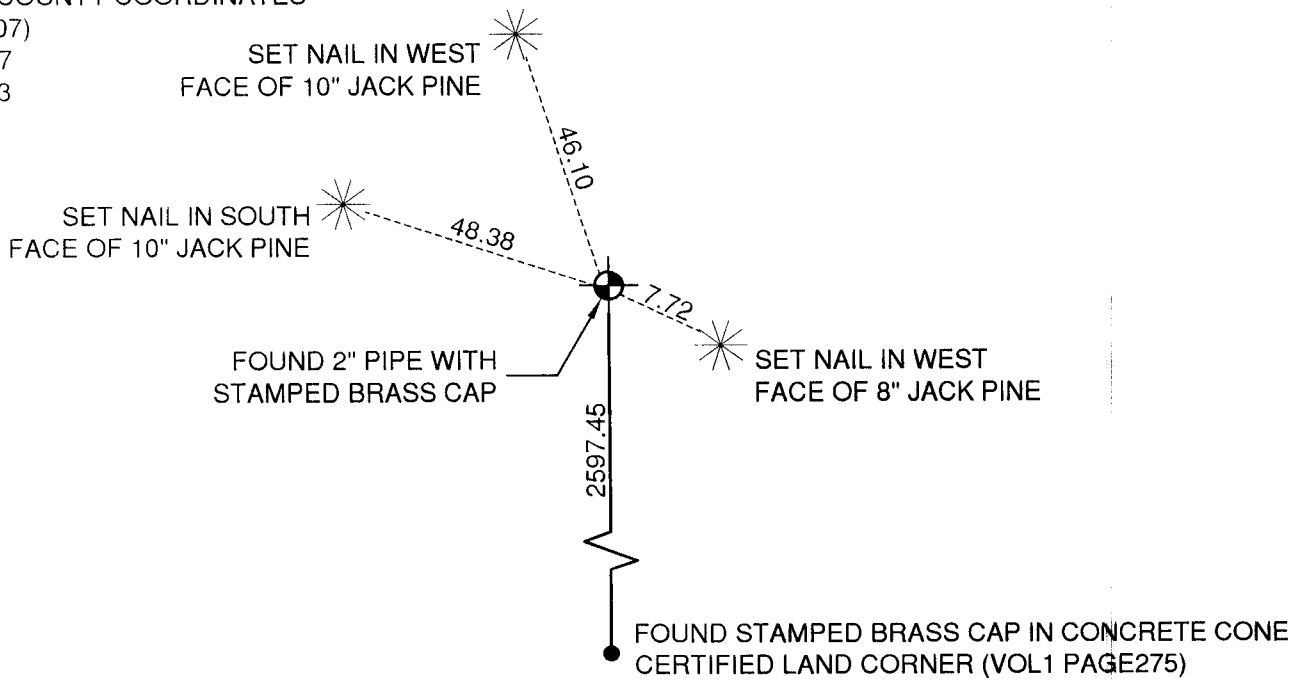
(g & h) Was the corner reestablished through lost corner proportionate methods? If so, show the method, including the directions and distances to other public land survey corners used as evidence or used for proportioning in determining the corner location.

(c) In the plan view below, provide reference ties to at least four witness monuments, or, if the location is within a municipality, to at least two witness monuments. (Witness monuments shall be of concrete, natural stone, iron, bearing trees, or other equally durable material.

(d) In the plan view drawing depict the relevant monuments and reference ties which are sufficient in detail to enable accurate relocation of the corner monument if the corner monument is disturbed.



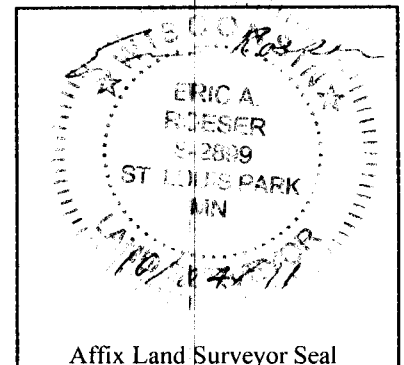
BAYFIELD COUNTY COORDINATES  
(HPGN)(2007)  
N:460224.87  
E:743344.53



(i) I, Eric A. Roeser, Registration Number 2899-8  
certify that the corner location on this record was determined by me or under my  
direction and that this U.S. Public Land Survey Monument Record is correct and  
complete to the best of my knowledge and belief.

Eric A. Roeser  
Signature

10/24/11  
Date



Affix Land Surveyor Seal