

4808360000
T R SEC ROW COL

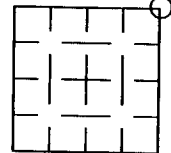
BAYFIELD COUNTY LAND SURVEY MONUMENT RECORD

INSTRUCTIONS: This record shall show the location of the corner and shall include all of the following nine elements (a through i).

(a) Identify the corner by reference to the U.S. land survey system.
○ = Corner monument restored.

The northeast corner of Section 1, T. 47 N., R. 8 W., in the Town of Iron River, Bayfield County, Wisconsin.

SECTION 1

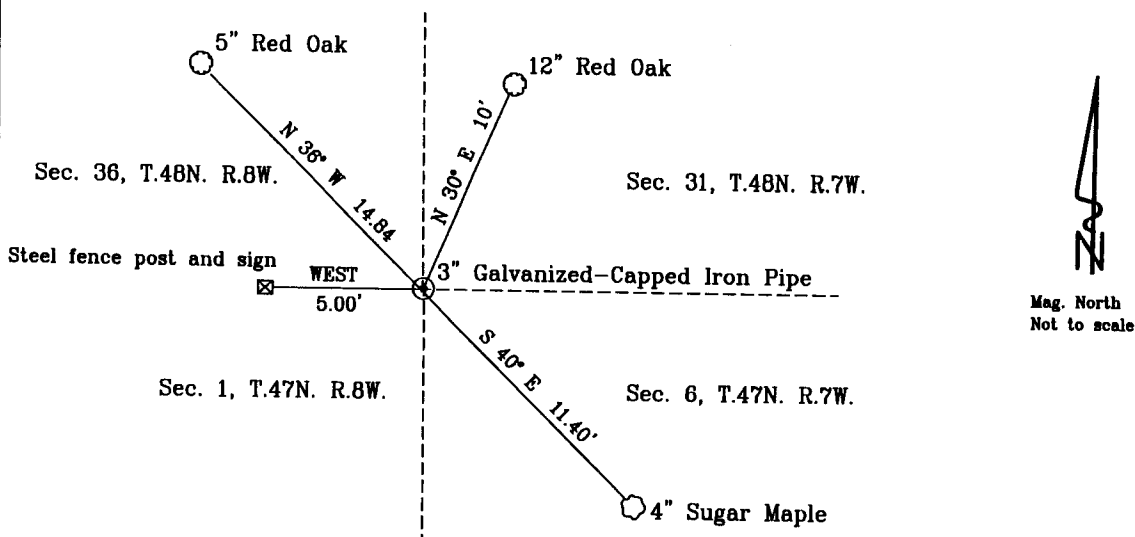


(b) Describe any record evidence, monument evidence, occupational evidence, testimonial evidence or any other material evidence you considered, and whether the monument was found or placed.

On October 31, 2005, I found a 3" galvanized-capped iron pipe, ±0.3 feet above ground level at the corner common to Sections 1, 6, 35 and 36.

LATITUDE	LONGITUDE	ELLIP. HGT.
46° 35' 21.72211"N	91° 18' 13.12746" W	1082.8033

(c & d) Show a plan view drawing depicting the relevant monuments and reference ties which is sufficient in detail to enable accurate relocation of the corner monument if the corner is disturbed. Indicate North
Witnessed corner as follows: Bearing trees are blazed.

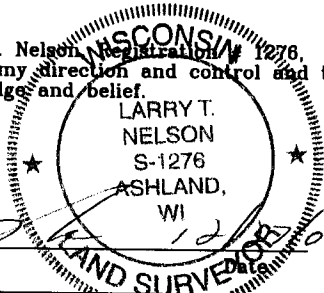


(e) Describe any material discrepancy between the location of the corner as restored or re-established and the location of that corner as previously restored or re-established by distance and direction. Show the discrepancy on the plan view drawing under (d) above. Show the distances between the corner as previously restored or re-established and (1) the corner as restored or re-established, and (2) to at least 2 of the witness monuments shown on the drawing in (d), above. N/A

(f) Was the corner restored through acceptance of (1) an obliterated evidence location, or, (2) a found perpetuated location? A Found Perpetuated Location

(g & h) Was the corner re-established through lost corner proportionate methods? If so, show the method, including the directions and distances to other public land survey corners used as evidence or or used for proportioning in determining the corner location. N/A

(i) I, Larry T. Nelson, Registration # 1276, certify that the corner location shown on this record was determined by me or under my direction and control and that this U. S. Public Land Survey Monument Record is correct to the best of my knowledge and belief.



Signature

SECTION 1, T. 47 N., R. 8 W.

NELSON SURVEYING INCORPORATED
101 W. MAIN STREET
SUITE 207
ASHLAND, WISCONSIN 54806
(715) 682-2692
FAX: (715) 682-5100
SURVEYING NORTHERN WISCONSIN SINCE 1954
WWW.NELSONSURVEYING.COM ©

Bayfield County PLSS Monument Record

Point:

WI ID#:

Description of Found Monument:

Condition of Monument:

Date of Field Work:

Northing:

Easting:

Date of Perpetuation:

Perpetuated By:

Rating of Coordinates:

Picture #1:

Picture #2:

Comment:

Latitude:

Longitude:

Section:

Town:

Range:

Picture of Monument:



48 08 36 00 00
T. R. Sec. Row Col.

287756

REGISTER'S OFFICE
Bayfield County, Wis.

RS-7150-11 (9/1/66) H. C. MILLER CO., MILWAUKEE 458624

RECORDED AT 1:10 P.M.
ON MAY 17 1973 IN

CERTIFIED LAND CORNER RESTORATION

Vol. _____ of _____ Page _____

State of Wisconsin }
County of Bayfield } ss.

Earl Pedersen
REGISTER OF DEEDS

I, Elwood L. Olson, do hereby certify that on the 29th day of June, 1972, I found evidence of the Section _____ corner of Sections 1-6-31-36 Township 47 and 48 North, Range 7 and 8 West, Fourth Principal Meridian, as described hereon; and that from this evidence I established a new monument and accessories as described hereon to perpetuate the original location of this corner: (NW corner of T.47N., R.7W.)

Description of original monument and accessories and subsequent restorations:

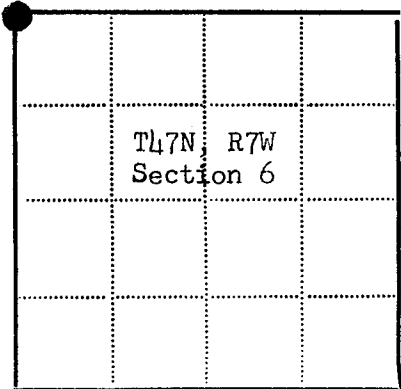
Original corner established in 1852 by E. L. Norris, Government Deputy Surveyor. From notes of H. C. Hall, Surveyor, dated 1917: Corner restored by proportionate measurement. Set galvanized iron post with 3" cap mkd. S.1, S.6, S.31, S.36.
Birch 12, S66W, 43 links
Aspen 10, N56W, 22 "
" 8, N70E, 14 "
" 8, S43E, 13 "

Description of corner evidence found:

Corner marked by a 2" dia., galvanized iron pipe, extending 7" above ground and surrounded by a mound of stone, with a 3" dia., galvanized iron screw cap on top stamped: S.1, S.6, S.31, S.36. A 10" W. Pine stump with old blaze and scribe marks "WOTSHP" on it, brs. S40°E, 30.8 feet from pipe. The corner is on the west slope of a hill.

Description of monument and accessories I established to perpetuate the original location of this corner:

Blazed and scribed new bearing trees as follows:
Oak 6", N35°W, 14.2 feet.
Oak 9", N31°E, 9.8 feet.
Oak 6", S14°W, 16.7 feet.
Iron sign post, West, 2.3 feet.



● = Corner monument restored
□ =

Resident witnesses _____

Dated at Park Falls, Wisconsin, this 2nd day of March 1973.

Signature Elwood L. Olson Title Registered Land Surveyor
(County Surveyor, Registered Land Surveyor, or other duly authorized official)

Surveyors Registration No. S-785

Office of _____ County of _____
I hereby certify that the within instrument was filed in this office for record on the _____ day of _____, 19____, and was filed in Book No. _____ Page No. _____ of County Records.

Signature _____ Title _____