

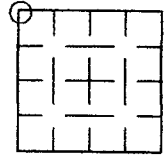
BAYFIELD COUNTY LAND SURVEY MONUMENT RECORD

INSTRUCTIONS: This record shall show the location of the corner and shall include all of the following nine elements (a through i).

(a) Identify the corner by reference to the U.S. land survey system.
○ = Corner monument restored.

The northwest corner of Section 6, T. 47 N., R. 8 W., in the Town of Iron River, Bayfield County, Wisconsin.

SECTION 6

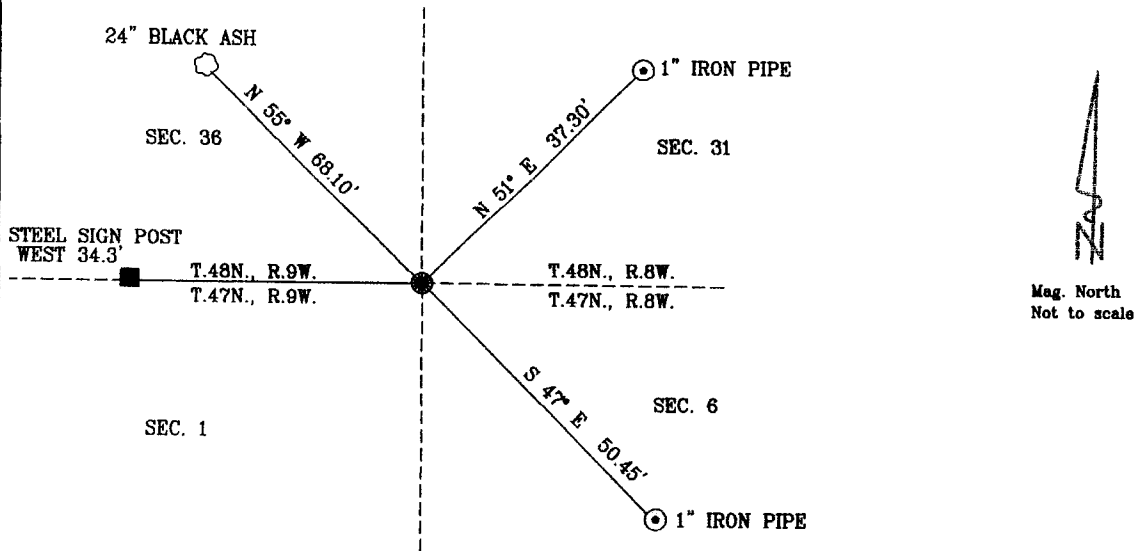


(b) Describe any record evidence, monument evidence, occupational evidence, testimonial evidence or any other material evidence you considered, and whether the monument was found or placed.

On December 28, 2005, I found a rail road spike, at the corner common to Section 6, T.47N., R.8W., Section 1, T.47N., R.9W., Section 31, T.48N., R.8W., and Section 36, T.48N., R.9W. Corner falls on centerline of Range Line Road and 12'± north of centerline of Hoffren Road at the end of the blacktop.

LATITUDE 46°35'24.82380" N LONGITUDE 91°25'40.03656" W

(c & d) Show a plan view drawing depicting the relevant monuments and reference ties which is sufficient in detail to enable accurate relocation of the corner monument if the corner is disturbed. Indicate North
Witnessed corner as follows: Bearing trees are blazed.



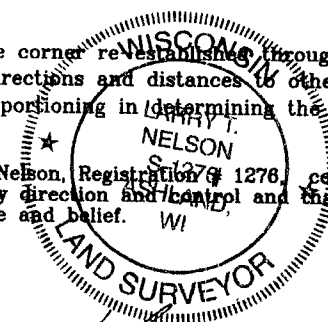
Mag. North
Not to scale

(e) Describe any material discrepancy between the location of the corner as restored or re-established and the location of that corner as previously restored or re-established by distance and direction. Show the discrepancy on the plan view drawing under (d) above. Show the distances between the corner as previously restored or re-established and (1) the corner as restored or re-established, and (2) to at least 2 of the witness monuments shown on the drawing in (d), above. N/A

(f) Was the corner restored through acceptance of (1) an obliterated evidence location, or, (2) a found perpetuated location? A Found Perpetuated Location

(g & h) Was the corner re-established through lost corner proportionate methods? If so, show the method, including the directions and distances to other public land survey corners used as evidence or or used for proportioning in determining the corner location. N/A

(i) I, Larry T. Nelson, Registration # 1276, certify that the corner location shown on this record was determined by me or under my direction and control and that this U. S. Public Land Survey Monument Record is correct to the best of my knowledge and belief. WI



Signature: *Larry T. Nelson* Date: 12/25/06

SECTION 6, T. 47 N., R. 8 W.

NELSON SURVEYING INCORPORATED
101 W. MAIN STREET SUITE 207
ASHLAND, WISCONSIN 54806
(715) 682-2692
FAX: (715) 682-5100
SURVEYING NORTHERN WISCONSIN SINCE 1954
WWW.NELSONSURVEYING.COM ©