

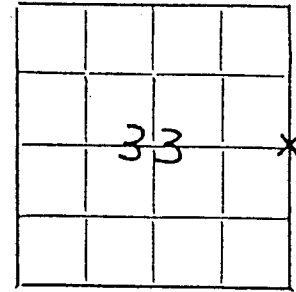
4905 33 2000

PRESERVATION OF MONUMENTS

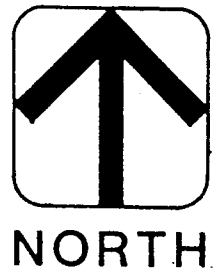
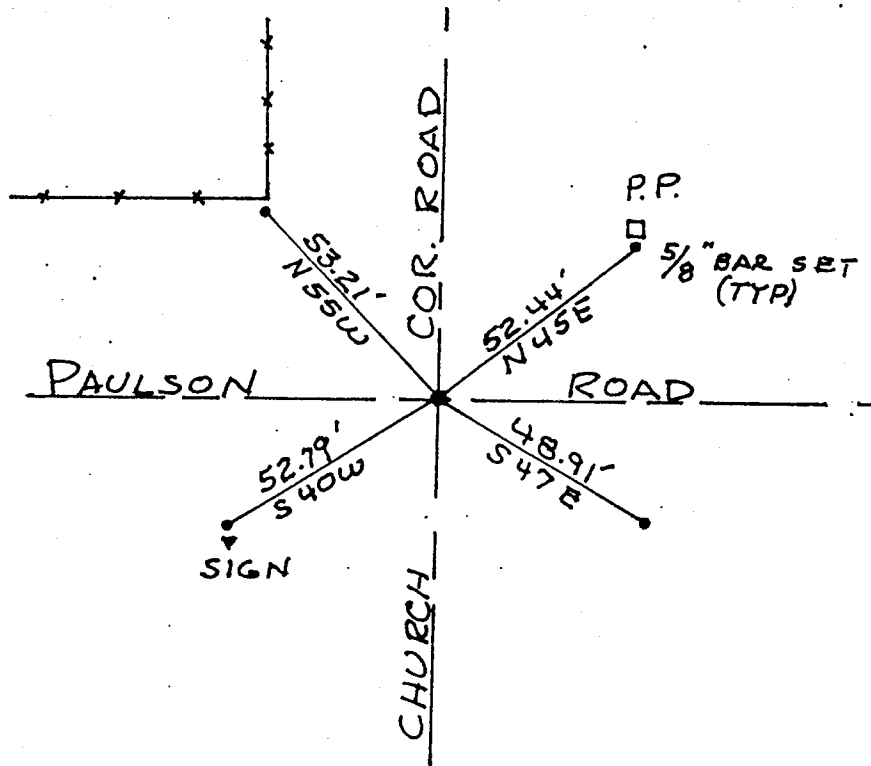
SECTION 59.635 WISCONSIN STATUTES

33-49-S

County BAYFIELD
 Town WASHBURN
 Highway CHURCH CORNER ROAD
 Section No. 33
 T. 49 N. R. 5 W.
 Type of Monument 1" IRON PIPE FOUND
 Location indicated on sketch —X—



LOCATION SKETCH



This space for copy of field notes or ties to the above described monuments.

Field notes or records filed in Book No. CHURCH CORNER PROJ. # 1387.00
 at the OWEN AYRES & ASSOC. office.
CITY of EAU CLAIRE, EAU CLAIRE County.
 Located or established by RAYMOND L. HUGHES 3/28, 1990.
 Title REGISTERED LAND SURVEYOR
#ST336

County Clerk's Office.....County, Wis.) ss.

Received for record....., 19.....

Copy sent to County Surveyor 10-01, 1991

County Clerk