

#4906

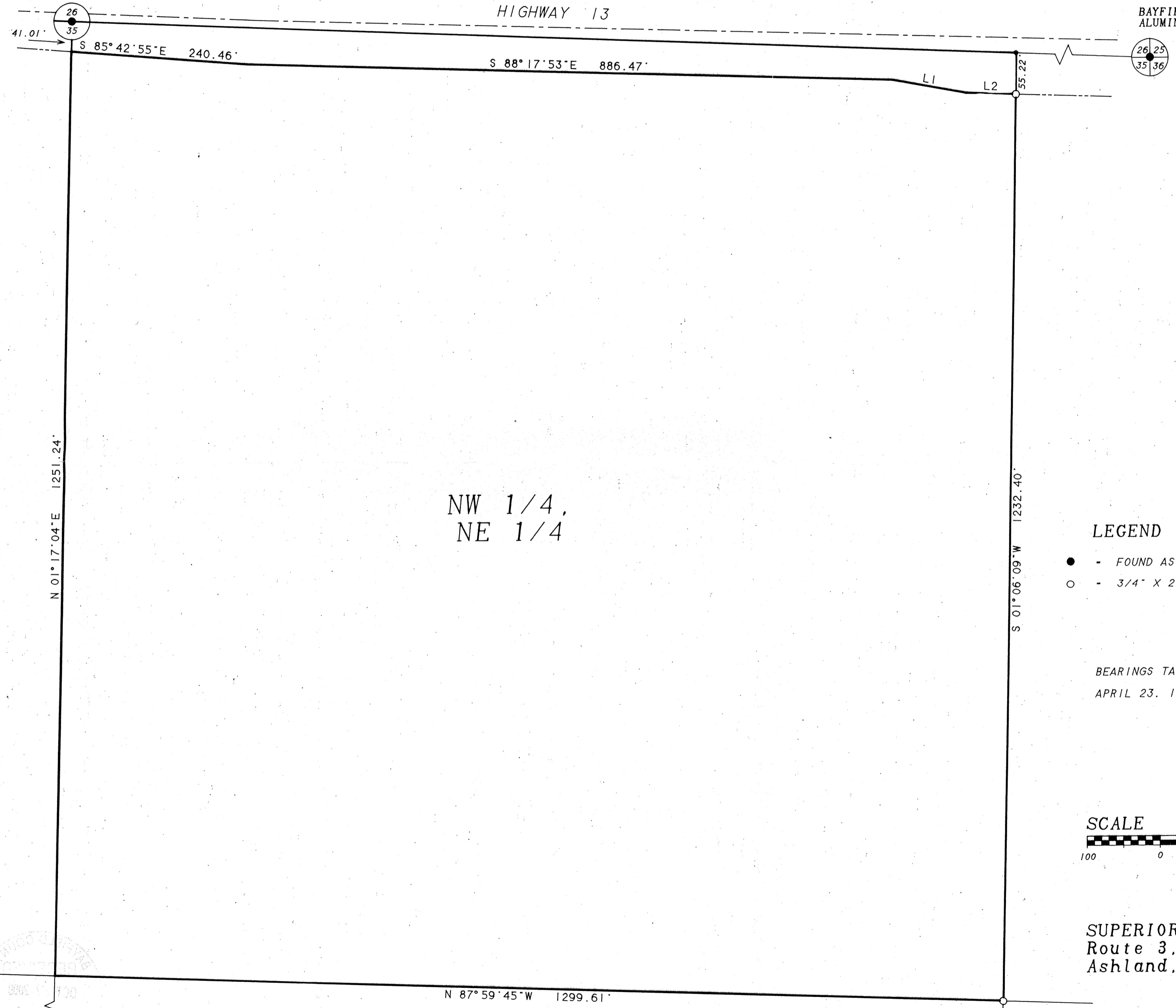
NW-NE 35-51-6

SUBDIVISION OF THE STAN MONOKOSKI PROPERTY

THE NW 1/4 OF THE NE 1/4, SECTION 35, T.51 N., R.6 W.,
BELL TOWNSHIP, BAYFIELD COUNTY, WISCONSIN.

BAYFIELD COUNTY "SURVEY
MARK" DRIVEN IN ASPHALT

BAYFIELD COUNTY
ALUMINUM MON.

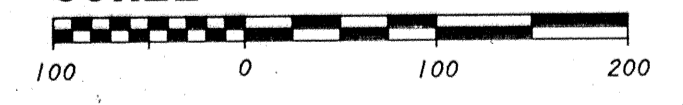


LEGEND

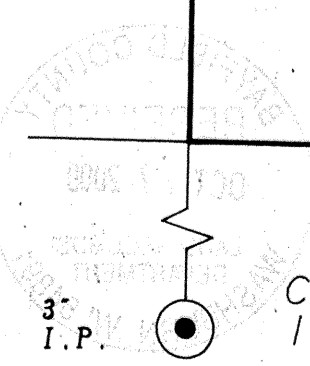
- - FOUND AS NOTED
- - 3/4" X 24" IRON ROD WEIGHING 1.63 LBS./LIN. FOOT SET

BEARINGS TAKEN FROM HIGHWAY 13 PLANS.
APRIL 23, 1998

SCALE



SUPERIOR SURVEYS, INC.
Route 3, Box 3215
Ashland, WI 54891



CENTER
1/4 COR.

3"
I.P.