



Stock No. 26273

CORNER NUMBER

4905300000  
T R SEC ROW COL

PAGE 1 OF 4

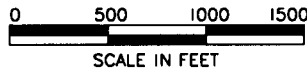
N 561942.84  
E 1709917.80

19 20  
30 29

### MAP OF SURVEY

U.S GOVERNMENT LANDS BEING THE WEST 1/2,  
AND THE NORTH 1/2 NORTHEAST 1/4 OF SEC.  
31, AND ALL OF SECTION 30, IN TOWNSHIP 49  
NORTH, RANGE 05 WEST, WASHBURN TOWNSHIP,  
BAYFIELD, COUNTY, WISCONSIN.

N 559292.29  
E 1704205.66  
1/4

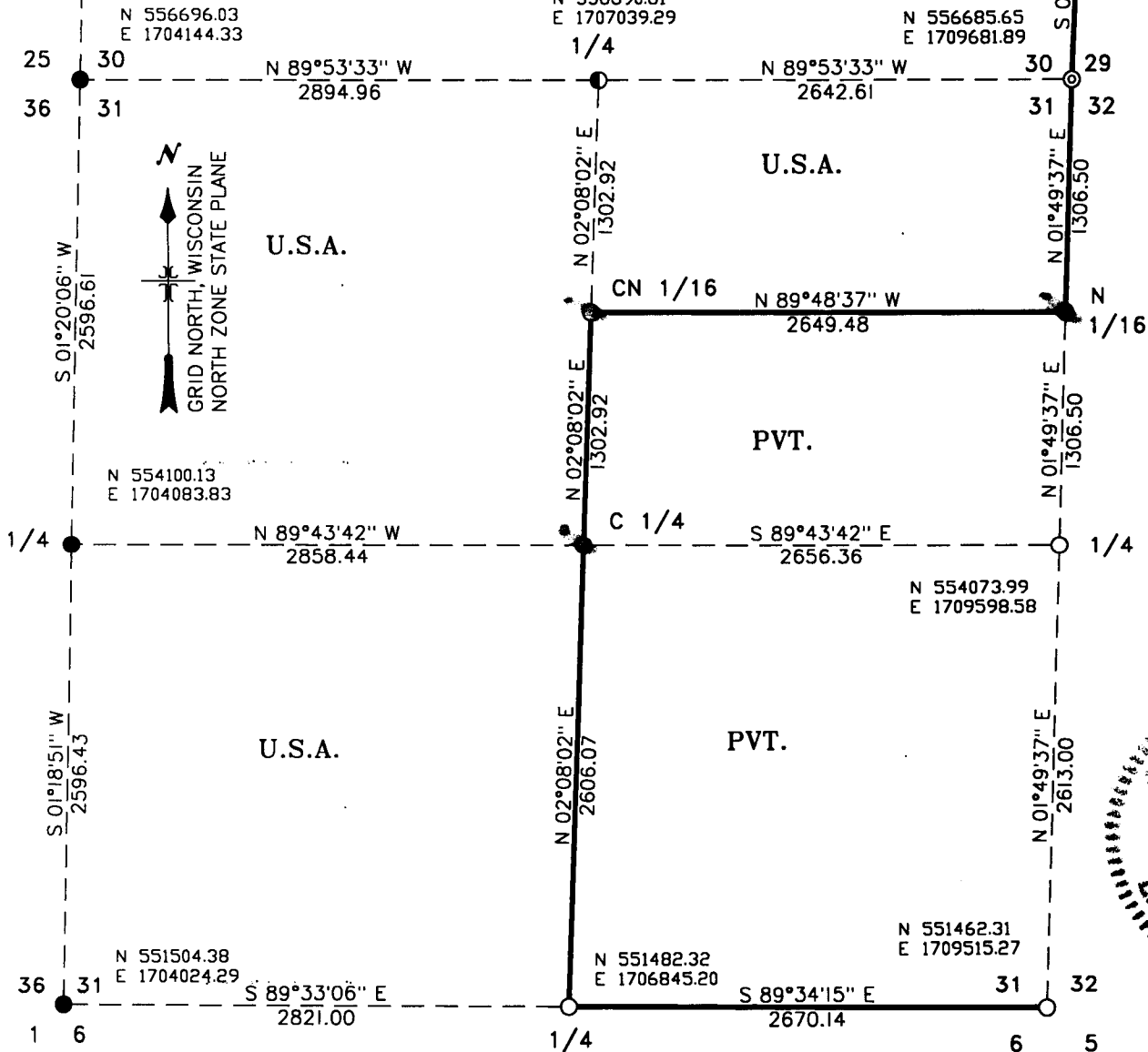


N 559315.86  
E 1709798.07

1/4  
S  
1/16

- RECOVERED US GENERAL LAND OFFICE MONUMENT FROM 1936 DEPENDENT RESURVEY.
  - ⊗ RECOVERED 1" x 24" IRON PIPE.
  - ⊙ SET A 1" x 36" ALUMINUM DRIVE MONUMENT W/ ALUMINUM CAP.
  - ⊖ SET A 1" x 60" ALUMINUM DRIVE MONUMENT W/ ALUM. CAP.
  - ⊕ RECOVERED MONUMENT PREVIOUSLY SET TO U.S.F.S. STANDARDS.
  - ⊙ RECOVERED BRASS CAP MONUMENT BY WISCONSIN CONSERVATION DEPT.
  - SET A 2" x 36" IRON PIPE WITH BRASS CAP.
  - SET A 2" x 36" ALUMINUM PIPE MONUMENT W/ ALUMINUM CAP.
- LINE MARKED TO U.S.F.S. STANDARD.

(N 559292.29) WISCONSIN NORTH ZONE STATE PLANE COORDINATES NAD 83.





Stock No. 26273

SURVEY NOTES  
SECTIONS 30 AND 31, T 49 N, R 05 W  
BAYFIELD COUNTY, WISCONSIN

THIS SURVEY WAS MADE BY THE U.S.D.A FOREST SERVICE AT THE REQUEST OF THE WASHBURN DISTRICT RANGER FOR THE PURPOSE OF RECOVERING, RESTORING, ESTABLISHING, MARKING, AND PERPETUATING THE CORNERS AND BOUNDARIES OF U.S. GOVERNMENT LANDS ON THE PERIMETER AND WITHIN SECTIONS 30 AND 31, T 49 N, R 05 W, BAYFIELD COUNTY, WISCONSIN.

ORIGINAL GOVERNMENT SURVEYS: TOWNSHIP LINES SURVEYED BY E.S. NORRIS IN 1852; SECTION LINES BY AUGUSTUS BARBER IN 1855. U.S. GENERAL LAND OFFICE DEPENDENT RESURVEY OF WEST LINE OF SECTIONS 30 AND 31 IN 1934 BY WILLIS BANDY. N.P.I. TIMBER COMPANY SURVEY ALONG EAST LINE OF SECTION 30 SOMETIME IN THE 1970'S OR 1980'S.

THIS SURVEY WAS MADE USING REAL TIME KINEMATIC GPS. BAYFIELD COUNTY GPS STATION "ANDERSON" WAS USED AS THE BASE FOR THIS SURVEY. BEARINGS AND DISTANCES ARE GRID, BASED ON WISCONSIN NORTH ZONE STATE PLANE COORDINATES. TRUE LINE TRAVERSES WERE MADE USING AN ELECTRONIC TOTAL STATION INSTRUMENT. ERROR OF CLOSURE BETWEEN GPS CONTROLLED POINTS WAS BETTER THAN 1:5000.

BEARING TREES WERE BLAZED, SCRIBED AND PAINTED WITH RED PAINT. MEASUREMENTS TO BEARING TREES ARE TO ALUMINUM NAILS IN THE SIDE OF TREES ABOVE THE CENTER OF THE ROOT CROWN.

NO NOTABLE ENCROACHMENTS WERE FOUND ON NATIONAL FOREST LANDS.

SURVEY WAS MADE IN NOVEMBER AND DECEMBER OF 2004, AND JULY OF 2005.

SURVEY CREW: RANDY ERICKSON, LAND SURVEYOR; GREG MAYER; CREW CHIEF; TED SOMMER, SURVEYING TECHNICIAN.

CORNERS RECOVERED

1. WEST QUARTER CORNER, SECTION 30, T 49 N, R 05 W.  
RECOVERED U.S. GENERAL LAND OFFICE MONUMENT, A 1" x 36" IRON POST IN A CONCRETE CYLINDER, WITH BRASS CAP SET DURING 1934 DEPENDENT RESURVEY. 1934 BTS GONE. MARKED NEW BTS:
 

RED PINE 3"	S 76° W	19.20 FEET
RED PINE 4"	N 32° W	18.34 FEET
RED PINE 5"	N 86° E	14.82 FEET
STEEL SIGN POST	NORTH	0.3 FEET
  
2. SOUTHWEST CORNER SECTION 30, T 49 N, R 05 W.  
RECOVERED U.S. GENERAL LAND OFFICE MONUMENT, A 1" x 36" IRON POST IN CONCRETE CYLINDER, WITH A BRASS CAP SET DURING 1934 DEPENDENT RESURVEY. RECOVERED 1934 NORWAY PINE BT N 39 1/4° W 142.6 FEET, NOW 18" DIAMETER. MARKED NEW BTS:
 

RED PINE 5"	N 25° E	22.30 FEET
RED PINE 6"	N 19° W	36.58 FEET
STEEL SIGN POST	SOUTH	0.7 FEET
  
3. WEST QUARTER CORNER, SECTION 31, T 49 N, R 05 W.  
RECOVERED U.S. GENERAL LAND OFFICE MONUMENT, A 1" x 36" IRON POST, IN CONCRETE CYLINDER, WITH BRASS CAP, SET DURING 1934 DEPENDENT RESURVEY. 1934 NORWAY PINE BT, S 0° 30" E 215.2' NOW IS 24" DIAMETER. MARKED NEW BEARING TREES:
 

MAPLE 6"	S 33° E	10.98 FEET
MAPLE 5"	N 70° W	9.00 FEET
STEEL SIGN POST	SOUTH	0.3 FEET
  
4. SOUTHWEST CORNER, SECTION 31, T 49 N, R 05 W.  
RECOVERED U.S. GENERAL LAND OFFICE MONUMENT, A CONCRETE MONUMENT IN THE FORM OF A FRUSTUM OF A CONE, 8" UPPER DIAM. 13" LOWER DIAMETER, 30 INCHES IN GROUND, WITH A 24"x24"x24" BASE. SET DURING 1934 DEPENDENT RESURVEY. NO BEARING TREES MARKED IN 1934. MARKED NEW BEARING TREES:
 

OAK 8"	S 73° W	43.75 FEET
OAK 11"	N 10° E	23.33 FEET
W. BIRCH 6"	S 72° E	14.02 FEET



Stock No. 26273

STEEL SIGN                      NORTH                      1.0 FEET

5. SOUTHEAST CORNER, SECTION 30, T 49 N, R 05 W.  
RECOVERED A 2" DIAMETER BRASS CAP PIPE SET BY WISCONSIN CONSERVATION DEPARTMENT. TOP OF MONUMENT IS 6" BELOW GROUND 16 FEET SOUTH OF CENTER LINE OF ROAD. MARKED BEARING TREES:

MAPLE	6"	N 28° W	78.89 FEET
MAPLE	2"	S 39° W	26.62 FEET
MAPLE	2"	S 41° E	42.43 FEET
STEEL SIGN		SOUTH	17.9 FEET

6. SOUTHEAST CORNER, SECTION 31, T 49 N, R 05 W.  
RECOVERED 1 1/2" x 48" IRON PIPE LAYING ON WEST SLOPE OF FOREST ROAD 697. RESET PIPE BASED ON TESTIMONY OF ED PAJALA, A LIFE LONG RESIDENT IN HIS 80'S. DROVE PIPE IN GROUND, TOP OF PIPE IS 6" BELOW ROAD SURFACE, 8 FEET WEST OF CENTER LINE AND 68 FEET NORTH OF INTERSECTION OF FOREST ROAD #690.

MARKED NEW BEARING TREES:

WHITE PINE	5"	S 82° W	78.15 FEET
RED PINE	4"	N 77° E	41.09 FEET
RED PINE	4"	N 29° W	45.72 FEET
STEEL SIGN POST		WEST	61.5 FEET

7. SOUTH QUARTER CORNER SECTION 31, T 49 N, R 05 W.  
FOUND A 1" x 24" IRON PIPE, FOUND AN OLD CEDAR POST LYING ON GROUND. REPLACED 1" PIPE WITH 2" x 36" IRON PIPE WITH A BRASS CAP STAMPED TO IDENTIFY THE CORNER. MONUMENT EXTENDS 6" ABOVE GROUND. RESET 1" PIPE ON WEST SIDE OF NEW MONUMENT

MARKED NEW BEARING TREES:

OAK	4"	NORTH	42.45 FEET
MAPLE	5"	EAST	15.76 FEET
MAPLE	3"	S 39° E	9.77 FEET
STEEL SIGN POST		EAST	0.5 FEET

8. NORTHEAST CORNER SECTION 30, T 49 N, R 05 W.  
RECOVERED MONUMENT AS DESCRIBED ON DOCUMENT #2005R 4989222, VOLUME 5, PAGES 71-72 LCR, BAYFIELD COUNTY REGISTER OF DEEDS FILED IN 2005 BY RLS #1897.
9. SOUTH 1/16 CORNER, SECTIONS 29 AND 30, T 49 N, R 05 W.  
RECOVERED A 1" X 24" IRON PIPE AT CORNER.

#### CORNERS RESTORED

1. QUARTER CORNER SECTIONS 29 AND 30, T 49 N, R 05 W.  
RESTORED CORNER BY EXTENDING A LINE FROM THE SOUTHEAST CORNER OF SECTION 30 THROUGH THE EXISTING SOUTH 1/16 CORNER AND DOUBLED THE DISTANCE. CORNER FALLS NEAR SEVERAL TREES WHICH WERE BLAZED AS BEARING TREES 20+ YEARS AGO. SET A 1" x 36" ALUMINUM DRIVE MONUMENT WITH A 2" ALUMINUM CAP STAMPED TO IDENTIFY THE CORNER. MONUMENT EXTENDS 4" ABOVE THE SWAMP. MARKED BEARING TREES:

JACK PINE	5"	N 68° E	5.74 FEET
JACK PINE	6"	S 30° W	29.95 FEET
JACK PINE	5"	N 60° W	23.83 FEET
STEEL SIGN POST		NORTH	0.6 FEET

2. QUARTER CORNER SECTIONS 30 AND 31, T 49 N, R 05 W.  
RESTORED CORNER BY SINGLE PROPORTIONATE MEASURE BETWEEN THE SOUTHEAST AND SOUTHWEST CORNERS OF SECTION 30. SET A 2" x 36" ALUMINUM PIPE MONUMENT WITH A 3" ALUMINUM CAP STAMPED TO IDENTIFY THE CORNER. MONUMENT EXTENDS 7" ABOVE GROUND.

MARKED BEARING TREES:

RED PINE	5"	S 89° E	18.32 FEET
RED PINE	3"	S 35° E	17.80 FEET
RED PINE	5"	S 09° E	16.81 FEET
STEEL SIGN POST		SOUTH	0.6 FEET



Stock No. 26273

3. QUARTER CORNER SECTIONS 31 AND 32, T 49 N, R 05 W.  
RESTORED CORNER BY SINGLE PROPORTIONATE MEASURE BETWEEN THE  
SOUTHEAST AND NORTHEAST CORNERS OF SECTION 31. SET A 2" x  
36" IRON PIPE WITH A BRASS CAP STAMPED TO IDENTIFY THE  
CORNER. MONUMENT EXTENDS 8" ABOVE GROUND. MARKED BTS:
- |                               |    |         |            |
|-------------------------------|----|---------|------------|
| ASPEN                         | 7" | N 70° W | 50.36 FEET |
| ASPEN                         | 6" | S 58° W | 61.01 FEET |
| ASPEN                         | 5" | S 01° W | 32.93 FEET |
| STEEL SIGN POST               |    | EAST    | 0.6 FEET   |
| STEEL SIGN POST               |    | N 77° E | 7.6 FEET   |
| BAYFIELD COUNTY MONUMENT WEST |    |         | 1.32 FEET  |
- (MONUMENT ERRONEOUSLY SET AFTER I HAD SET A NAIL AT CORRECT  
POSITION IN DECEMBER OF 2004)

## CORNERS ESTABLISHED

1. NORTH 1/16 CORNER SECTIONS 31 AND 32, T 49 N, R 05 W.  
ESTABLISHED CORNER MID POINT ON LINE BETWEEN THE NORTHEAST  
EAST QUARTER CORNERS OF SECTION 31. SET A 2" x 36" IRON  
PIPE WITH A 3" BRASS CAP STAMPED TO IDENTIFY THE CORNER.  
MONUMENT EXTENDS 5" ABOVE GROUND. MARKED BEARING TREES:
- |                 |    |         |            |
|-----------------|----|---------|------------|
| RED PINE        | 4" | N 06° W | 18.73 FEET |
| RED PINE        | 5" | N 35° W | 21.38 FEET |
| RED PINE        | 5" | S 88° W | 33.97 FEET |
| STEEL SIGN POST |    | NORTH   | 0.5 FEET   |
| 1" IRON PIPE    |    | WEST    | 2.11 FEET  |
2. CENTER NORTH 1/16 CORNER SECTION 31, T 49 N, R 05 W.  
ESTABLISHED CORNER MID POINT ON LINE BETWEEN THE NORTH 1/4  
AND CENTER 1/4 CORNERS OF SECTION 31. SET A 2" x 36" IRON  
PIPE WITH A 3" BRASS CAP, STAMPED TO IDENTIFY THE CORNER.  
MONUMENT EXTENDS 5" ABOVE GROUND. MARKED BEARING TREES:
- |                 |    |         |            |
|-----------------|----|---------|------------|
| RED PINE        | 4" | S 41° W | 11.20 FEET |
| RED PINE        | 6" | S 29° E | 19.64 FEET |
| RED PINE        | 6" | N 53° W | 11.11 FEET |
| STEEL SIGN POST |    | EAST    | 0.5 FEET   |
3. CENTER QUARTER CORNER, SECTION 31, T 49 N, R 05 W.  
ESTABLISHED CORNER AT INTERSECTION OF STRAIGHT LINES BETWEEN  
OPPOSING 1/4 CORNERS ON THE PERIMETER OF SECTION 31. SET A  
1" x 60" ALUMINUM DRIVE MONUMENT WITH A 2" ALUMINUM CAP  
STAMPED TO IDENTIFY THE CORNER. MONUMENT EXTENDS 6" ABOVE  
THE SWAMP. MARKED BEARING TREES:
- |                 |     |         |            |
|-----------------|-----|---------|------------|
| WHITE PINE      | 15" | S 35° E | 10.90 FEET |
| TAMARACK        | 8"  | N 82° W | 4.70 FEET  |
| TAMARACK        | 14" | N 41° W | 10.78 FEET |
| STEEL SIGN POST |     | SOUTH   | 0.7 FEET   |

## SURVEYORS AFFIDAVIT

STATE OF WISCONSIN)  
COUNTY OF BAYFIELD) SS

I RANDY R. ERICKSON, LAND SURVEYOR FOR THE U.S.D.A. FOREST  
SERVICE AND A REGISTERED LAND SURVEYOR IN THE STATE OF WISCONSIN,  
DO HEREBY CERTIFY THAT I HAVE SURVEYED AND SUB DIVIDED SECTIONS 30  
AND 31, TOWNSHIP 49 NORTH, RANGE 05 WEST, 4TH P.M., BAYFIELD  
COUNTY, WISCONSIN. DURING THIS SURVEY, I HAVE COMPLIED WITH THE  
RULES FOR SUBDIVISION OF THE PUBLIC LAND AND APPLICABLE STATE  
RULES. THE MAP OF SURVEY AND ACCOMPANYING NOTES ARE CORRECT AND  
ACCURATE TO THE BEST OF MY KNOWLEDGE AND BELIEF.

*Randy R. Erickson*  
RANDY R. ERICKSON  
WIS. REGISTERED L.S. #1897

DATE

*9-28-2005*

