

4 9 0 8 3 6 0 0 0 0
T. R. Sec. Row Col.

REN7130-11 (9/1/66) H. C. MILLER CO., MILWAUKEE 475370

CERTIFIED LAND CORNER RESTORATION

State of Wisconsin }
County of Bayfield } ss.

I Elwood L. Olson, do hereby certify that on the 5th day of November, 1974, I found evidence of the Section corner of Sections 1-6-31-36 Township 48 and 49 North, Range 7 and 8 West, Fourth Principal Meridian, as described hereon; and that from this evidence I established a new monument and accessories as described hereon to perpetuate the original location of this corner:

Description of original monument and accessories and subsequent restorations:

Original corner established in 1852 by E.L. Norris, Government Deputy Surveyor.
Red Pine 10, N58W, 8 links; Red Pine 10, N45E, 7 links;
Red Pine 8, S35E, 14 links; Red Pine 12, S70W, 8 links.
From plat of survey by B.F. Hammes, Bayfield County Engineer.
Set 3 inch iron pipe for corner. On N. side of road. Iron pipe has brass cap stamped to indicate location.

Description of corner evidence found:

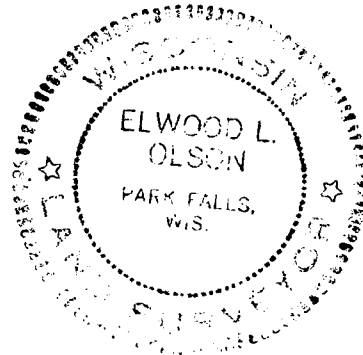
Corner marked by a 3" outside dia. iron pipe in place, extending 22" above ground, with a 3 1/4" dia. brass screw cap on top stamped: T49N, R7W, R8W, T48N, 1942, 1, 6, 31, 36. Old decayed wood post, with W.C.D. location poster, brs. South, 3.2 feet. From corner I measured 37 feet south to center of old E.-W. road.

Description of monument and accessories I established to perpetuate the location of this corner:

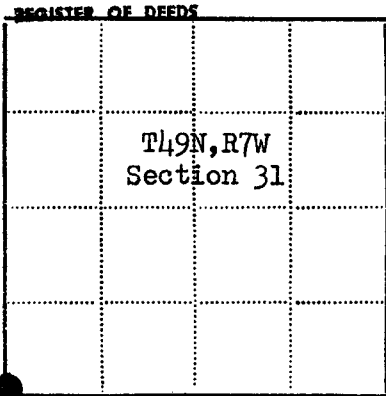
Reset the iron pipe (4' long) firmly in ground, extending 5" above ground. Set iron sign post 1.7 feet East of corner.
Blazed and scribed new bearing trees as follows:
J. Pine 8", N23°E, 6.0 feet.
Spruce 5", S74 E, 31.3 feet.
N. Pine 4", S26°W, 22.6 feet.

REGISTER'S OFFICE Bayfield County, Wis.
RECORDED AT 11:00 M.
ON JUN 10 1975 IN
Vol. 1 of 100R Page 160

300881



Earl Pedersen



● - Corner monument restored
□ -

Resident witnesses.....

Dated at Park Falls Wisconsin, this 29th day of January 1975...

Signature Elwood L. Olson Title Registered Land Surveyor
(County Surveyor, Registered Land Surveyor, or other duly authorized official)

Surveyors Registration No. S-785

Office of.....County of.....

I hereby certify that the within instrument was filed in this office for record on the.....day of.....19....., and was filed in Book No.....Page No.....of County Records.

Signature.....Title.....

Township....., Range....., Section....., Index No....., Page No.....

160



Stock No. 26273

435493

VOL. 3 OF LCR PAGE 156

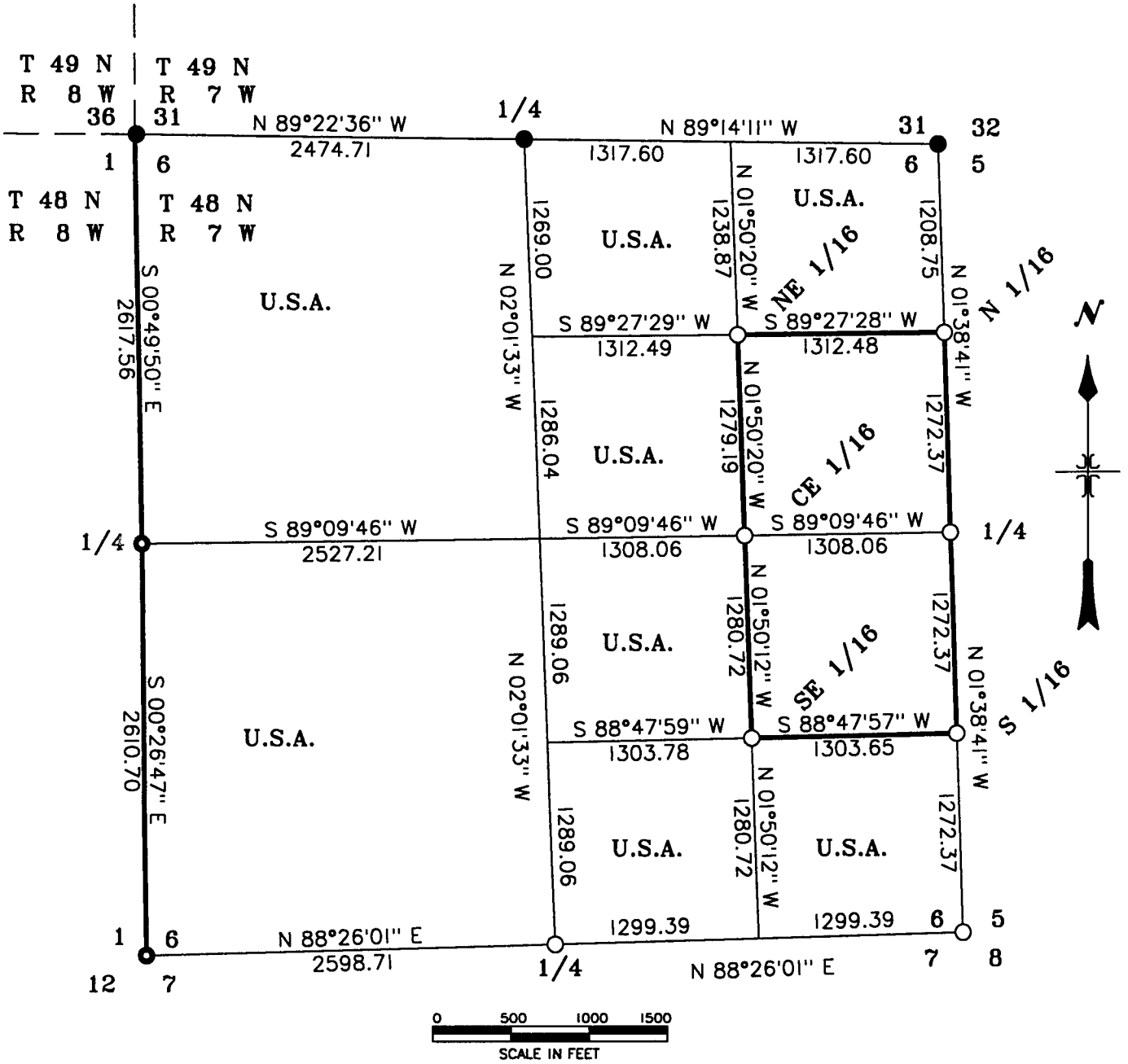
Otto Korpela 159

REGISTER OF DEEDS

'97 AUG 11 PM 1 49

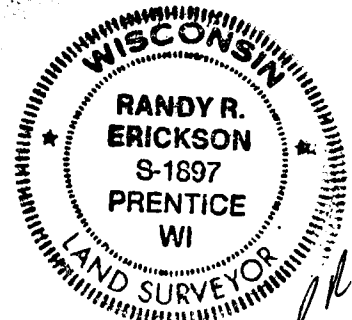
PLAT OF SURVEY REGISTER'S OFFICE/S.S. BAYFIELD COUNTY, WIS.

U.S. GOVERNMENT LANDS BEING THE NE 1/4 NE 1/4, SE 1/4 SE 1/4, WEST 1/2 SE 1/4, WEST 1/2 NE 1/4, NORTHWEST 1/4, AND SOUTHWEST 1/4, OF SECTION 6, TOWNSHIP 48 NORTH, RANGE 7 WEST, 4TH P.M. BAYFIELD COUNTY, WISCONSIN.



LEGEND

- RECOVERED MONUMENT PREVIOUSLY MARKED TO U.S.F.S SPECS.
- RECOVERED MONUMENT SET IN 1942 BY COUNTY ENGINEER, B.F. HAMMES
- SET A 2" x 36" ALUMINUM PIPE MONUMENT WITH ALUMINUM CAP.
- LINE MARKED TO U.S.F.S. SPECIFICATIONS.



Handwritten notes: RRE 6-23-97 156



Stock No. 26273

SURVEY NOTES SECTION 6
TOWNSHIP 48 NORTH, RANGE 7 WEST

THIS SURVEY WAS MADE BY THE U.S.D.A. FOREST SERVICE AT THE REQUEST OF THE WASHBURN DISTRICT RANGER FOR THE PURPOSE OF RECOVERING, RESTORING, ESTABLISHING, MARKING, AND PERPETUATING THE CORNERS OF U.S. GOVERNMENT LANDS ON THE PERIMETER AND WITHIN SECTION 6, TOWNSHIP 48 NORTH, RANGE 7 WEST, 4TH P.M., BAYFIELD COUNTY, WISCONSIN.

THE ORIGINAL GOVERNMENT SURVEY OF THE TOWNSHIP LINES WERE MADE IN 1852 BY THE DEPUTY SURVEYOR E.S. NORRIS. THE TOWNSHIP WAS SUBDIVIDED BY DEPUTY SURVEYOR A.E. STUNTZ IN 1858. IN 1942 BAYFIELD COUNTY ENGINEER B.F. HAMMES PERPETUATED THE PUBLIC LAND CORNERS ON THE NORTH AND WEST LINES OF SECTION 6. IN 1974 FOREST SERVICE LAND SURVEYOR ELWOOD OLSON RLS #785 PERPETUATED THE MONUMENTS SET IN 1942 ON THE NORTH LINE OF SECTION 6.

THE BASIS OF BEARING FOR THIS SURVEY IS TRUE BASE ON A SOLAR OBSERVATION TAKEN ALONG A LEG OF THE RANDOM TRAVERSE.

ALL TRAVERSE LOOPS WERE COMPLETED USING AN ELECTRONIC TOTAL STATION INSTRUMENT WITH AN ELECTRONIC DATA COLLECTOR. ALL TRAVERSE LOOPS HAD AN ERROR OF CLOSURE RATIO OF BETTER THAN 1:5000.

ENCROACHMENTS OF TIMBER HARVESTING ONTO NATIONAL FOREST LANDS WERE FOUND ON THE SOUTH EDGE OF THE NE 1/4 NE 1/4 OF SECTION 6, ALONG THE WEST EDGE OF THE SW 1/4 NW 1/4 OF SECTION 5, T48N, R7W, AND ALONG THE WEST EDGE OF THE SW 1/4 NW 1/4 OF SECTION 6.

THE FOREST SERVICE ENCROACHED ON TO PRIVATE LANDS WITH TIMBER HARVESTING ON THE WEST SIDE OF THE NE 1/4 SE 1/4 AND SE 1/4 NE 1/4. AND ALONG THE SOUTH EDGE OF THE NE 1/4 SE 1/4.

THIS SURVEY WAS MADE IN AUGUST AND SEPTEMBER OF 1996.

CORNERS RECOVERED

1. TOWNSHIP CORNER TOWNS 48 & 49 NORTH, RANGES 7 & 8 WEST
RECOVERED MONUMENT AS DESCRIBED ON DOCUMENT #300881, CERT. LAND CORNER RESTORATION BOOK, VOLUME 1, PAGE 160, BAYFIELD COUNTY RECORDS, FILED IN 1975 BY RLS #785.
2. QUARTER CORNER SECTION 6, T48N, R7W AND SEC. 31, T49N, R7W.
RECOVERED MONUMENT AS DESCRIBED ON DOCUMENT #300882, CERT. LAND CORNER RESTORATION BOOK, VOLUME 1, PAGE 161, BAYFIELD COUNTY RECORDS, FILED IN 1975 BY RLS #785.
3. CORNER TO SECS. 5 & 6, T48N, R7W AND SECS. 31 & 32, T49N, R7W.
RECOVERED MONUMENT AS DESCRIBED ON DOCUMENT #300890, CERT. LAND CORNER RESTORATION BOOK, VOLUME 1, PAGE 169, BAYFIELD COUNTY RECORDS, FILED IN 1975 BY RLS #785.
4. QUARTER CORNER TO SEC. 1, T48N, R8W AND SEC. 6, T48N, R7W.
RECOVERED 3" x ?" IRON PIPE WITH A 3 1/4" BRASS SCREW ON CAP STAMPED TO IDENTIFY THE CORNER EXTENDING 16" ABOVE THE GROUND. MONUMENT SET BY B.F. HAMMES IN 1942. MARKED BT'S:

OAK	14"	S 73° E	13.33 FT.	BEAVER BLAZE
OAK	4"	N 31° W	45.79 FT.	
OAK	9"	S 38° W	58.00 FT.	
STEEL SIGN POST		NORTH	1.1 FT.	
5. CORNER TO SECS. 1 & 12 T48N, R8W, AND SECS. 6 & 7 T48N, R7W.
RECOVERED 3" x ?" IRON PIPE WITH A 3 1/4" BRASS SCREW ON CAP STAMPED TO IDENTIFY THE CORNER EXTENDING 16" ABOVE THE GROUND. MONUMENT SET BY B.F. HAMMES IN 1942. MARKED BT'S:

OAK	11"	N 50° E	14.05 FT.
OAK	9"	S 61° E	19.95 FT.
OAK	5"	S 75° W	17.24 FT.
STEEL SIGN POST		NORTH	0.9 FT.

157



Stock No. 26273

CORNERS RESTORED

1. CORNER TO SECTIONS 5-6-7-8, T 48 N, R 7 W.
RESTORED CORNER AT INTERSECTION OF OLD DOWN FENCE LINES RUNNING SOUTH AND EAST. SET A 2" x 36" ALUMINUM PIPE WITH AN ALUMINUM CAP STAMPED TO IDENTIFY THE CORNER. MONUMENT EXTENDS 8" ABOVE GROUND. MARKED BEARING TREES:

OAK	7"	N 52° E	10.86 FT.
OAK	15"	S 26° W	26.36 FT.
OAK	12"	N 80° W	41.57 FT.
STEEL SIGN POST		WEST	0.8 FT.

2. QUARTER CORNER TO SECTIONS 5 AND 6, T 48 N, R 7 W.
RESTORED CORNER BY SINGLE PROPORTIONATE MEASURE BETWEEN THE SOUTHEAST AND NORTHEAST CORNERS OF SECTION 6. SET A 2"x 36" ALUMINUM PIPE MONUMENT WITH AN ALUMINUM CAP STAMPED TO IDENTIFY THE CORNER. MONUMENT EXTENDS 8" ABOVE GROUND. MARKED BEARING TREES:

R. PINE	10"	S 39° E	49.50 FT.
OAK	3"	S 89° E	26.12 FT.
R. PINE	8"	N 33° E	30.81 FT.
STEEL SIGN POST		NORTH	0.6 FT.

3. QUARTER CORNER TO SECTIONS 6 AND 7, T 48 N, R 7 W.
RESTORED CORNER BY SINGLE PROPORTIONATE MEASURE BETWEEN THE SOUTHEAST AND SOUTHWEST CORNERS OF SECTION 6. SET A 2"x36" ALUMINUM PIPE MONUMENT WITH AN ALUMINUM CAP STAMPED TO IDENTIFY THE CORNER. MONUMENT EXTENDS 6" ABOVE GROUND. MARKED BEARING TREES:

OAK	3"	S 09° W	20.71 FT.
OAK	3"	N 79° W	25.84 FT.
OAK	4"	N 25° E	29.61 FT.
STEEL SIGN POST		NORTH	0.6 FT.

CORNERS ESTABLISHED

1. SOUTHEAST ONE-SIXTEENTH CORNER SECTION 6, T 48 N, R 7 W.
ESTABLISHED CORNER AT INTERSECTION OF STRAIGHT LINES BETWEEN OPPOSING 1/16 CORNERS ON THE PERIMETER OF THE SOUTHEAST QUARTER OF SECTION 6. SET A 2"x 36" ALUMINUM PIPE MONUMENT WITH AN ALUMINUM CAP STAMPED TO IDENTIFY THE CORNER. MONUMENT EXTENDS 7" ABOVE THE GROUND. MARKED BEARING TREES:

OAK	10"	N 04° E	82.63 FT.
OAK	14"	N 46° E	49.45 FT.
OAK	9"	N 88° E	74.00 FT.
STEEL SIGN POST		NORTH	0.6 FT.

2. CENTER-EAST ONE-SIXTEENTH CORNER SECTION 6, T 48 N, R 7 W.
ESTABLISHED CORNER MIDPOINT ON LINE BETWEEN THE CENTER 1/4 CORNER AND EAST 1/4 CORNER OF SECTION 6. SET A 2"x 36" ALUMINUM PIPE MONUMENT WITH AN ALUMINUM CAP STAMPED TO IDENTIFY THE CORNER. MONUMENT EXTENDS 6" ABOVE THE GROUND. MARKED BEARING TREES:

OAK	3"	N 17° E	41.50 FT.
OAK	4"	N 83° E	18.26 FT.
OAK	2"	S 13° E	31.01 FT.
STEEL SIGN POST		SOUTH	0.6 FT.

3. NORTHEAST ONE-SIXTEENTH CORNER SECTION 6, T 48 N, R 7 W.
ESTABLISHED CORNER AT INTERSECTION OF STRAIGHT LINES BETWEEN OPPOSING 1/16 CORNERS ON THE PERIMETER OF THE NORTHEAST QUARTER OF SECTION 6. SET A 2"x 36" ALUMINUM PIPE MONUMENT WITH ALUMINUM CAP STAMPED TO IDENTIFY THE CORNER. MONUMENT EXTENDS 8" ABOVE GROUND. MARKED BEARING TREES:

OAK	13"	S 21° E	7.82 FT.
MAPLE	5"	S 44° W	30.63 FT.
MAPLE	7"	N 50° W	26.79 FT.
STEEL SIGN POST		EAST	0.7 FT.

158



Stock No. 26273

4. NORTH ONE-SIXTEENTH CORNER SECTIONS 5 AND 6, T 48 N, R 7 W.
ESTABLISHED CORNER BY SINGLE PROPORTIONATE MEASURE BETWEEN
THE EAST 1/4 CORNER AND NORTHEAST CORNER OF SECTION 6. SET
A 2"x 36" ALUMINUM PIPE MONUMENT WITH AN ALUMINUM CAP
STAMPED TO IDENTIFY THE CORNER. MONUMENT EXTENDS 10" ABOVE
GROUND. MARKED BEARING TREES:
- | | | | |
|-----------------|----|---------|-----------|
| OAK | 8" | S 32° W | 26.09 FT. |
| MAPLE | 5" | N 17° W | 28.57 FT. |
| MAPLE | 5" | N 64° W | 28.45 FT. |
| STEEL SIGN POST | | SOUTH | 1.1 FT. |
5. SOUTH ONE-SIXTEENTH CORNER SECTIONS 5 AND 6, T 48 N, R 7 W.
ESTABLISHED CORNER MIDPOINT ON LINE BETWEEN THE EAST 1/4
CORNER AND SOUTHEAST CORNER OF SECTION 6. SET A 2"x 36"

ALUMINUM PIPE MONUMENT WITH AN ALUMINUM CAP STAMPED TO
IDENTIFY THE CORNER. MONUMENT EXTENDS 7" ABOVE THE GROUND.
MARKED BEARING TREES:

R.PINE	15"	S 82° W	56.18 FT.
R.PINE	19"	N 21° W	22.36 FT.
R.PINE	3"	S 32° E	17.05 FT.
STEEL SIGN POST		WEST	0.6 FT.

SURVEYORS AFFIDAVIT

STATE OF WISCONSIN)
COUNTY OF BAYFIELD) SS

I RANDY R. ERICKSON, LAND SURVEYOR FOR THE U.S.D.A. FOREST SERVICE AND A REGISTERED LAND SURVEYOR IN THE STATE OF WISCONSIN, DO HEREBY CERTIFY THAT I HAVE SURVEYED AND SUBDIVIDED SECTION 6, TOWNSHIP 48 NORTH, RANGE 7 WEST, FOURTH PRINCIPLE MERIDIAN, BAYFIELD COUNTY, WISCONSIN. DURING THIS SURVEY I HAVE COMPLIED WITH THE RULES FOR THE SURVEY OF PUBLIC LANDS AND THE STATUTES OF THE STATE OF WISCONSIN CONCERNING SURVEYS. THE PLAT OF SURVEY AND THE ACCOMPANYING NOTES ARE A CORRECT REPRESENTATION OF THE SURVEY TO THE BEST OF MY KNOWLEDGE AND BELIEFS.

RANDY R. ERICKSON
WISCONSIN REGISTERED LAND SURVEYOR
#1897

DATE

6-23-97

CREW MEMBERS:
RANDY R. ERICKSON LAND SURVEYOR
GREGORY E. MAYER CREW CHIEF-INSTRUMENT
BRIAN A. BOEHM TARGET-SAWYER

