

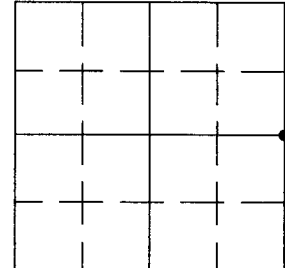
4909352000
T R SEC ROW COL

U.S PUBLIC LAND SURVEY MONUMENT RECORD

Note: This form is intended and designed to fulfill all requirements of Wisconsin Administrative Code, Chapter A-E 7.08 U.S. Public Land Survey Monument Record (3) (a) (b) (c) (d) (e) (f) (g) (h) (i).

- (a) Identify the corner by reference to the U.S. public land survey system.

Corner EAST 1/4 CORNER
 Section 35
 Township 49 North
 Range 9 West
 Town/City/ Village ORIENTA
 Bayfield County



• = Corner
Monument
Restored

- (b) Describe any record evidence, monument evidence, occupational evidence, testimonial evidence, or any other material evidence you considered, and whether the monument was found or placed.

Septemer 21st, 1852 Al Stuntz, 40.00 chains Set quarter Section post
 Spruce 6 N 81 W 12 links
 Spruce 8 N 80 E 14 links

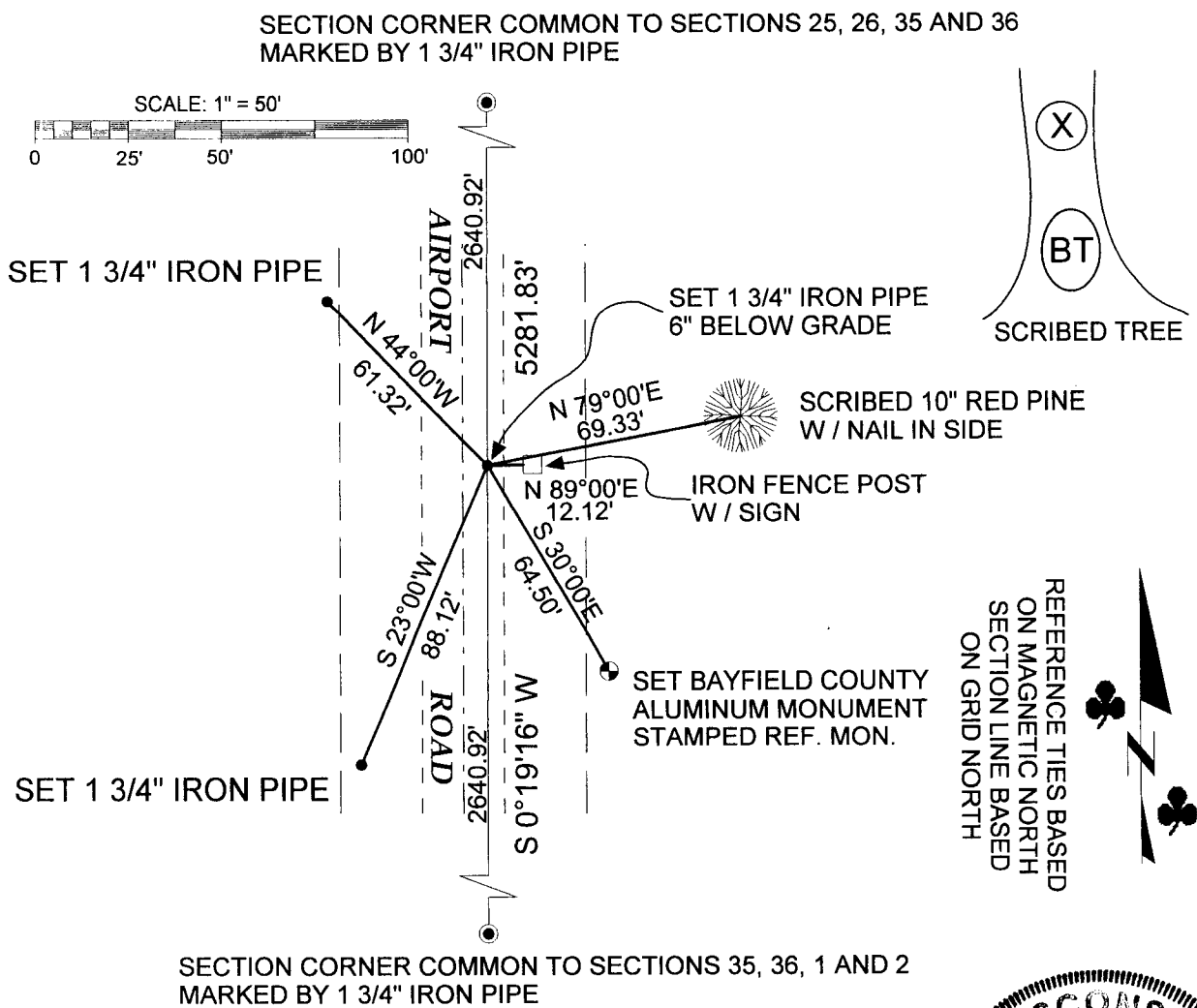
October 4th, 2006 Benton A. McMullen, No evidence of original corner or witnesses.
 Set 1 3/4" Iron Pipe 6" below grade in roadbed of Airport Road.
 Established Witnesses:
 1 3/4" Iron Pipe, South 23° 00' West, 88.12'
 1 3/4" Iron Pipe, North 44° 00' West, 61.32'
 10" Red Pine Scribed with Nail in side, North 79° 00' East, 69.33'
 Iron Fence Post with Sign, North 89° 00' East, 12.12'
 Bayfield County Aluminum Monument Stamped REF. MON., South 30° 00' East, 64.50'

- (c&d) Provide plan view drawing on reverse side.
- (e) Describe any material discrepancy between the location of the corner as restored and the location of the corner as previously restored or reestablished. Show the discrepancy on the plan view drawing.
- (f) Was the corner restored through acceptance of an obliterated location or a found perpetuated location?
 No.
- (g&h) Was the corner reestablished through lost corner proportionate methods? If so, show the method, including the directions and distances to other public land survey corners used as evidence or used for proportioning in determining the corner location.

The corner position was reestablished through use of single proportionate measurement method.
 See drawing on sheet 2 for dimensions.

(c) In the plan view below, provide reference ties to at least four witness monuments, or, if the location is within a municipality, to at least two witness monuments. (Witness monuments shall be of concrete, natural stone, iron, bearing trees, or other equally durable material.

(d) In the plan view drawing depict the relevant monuments and reference ties which are sufficient in detail to enable accurate relocation of the corner monument if the corner is disturbed.



(i) I, Benton A. McMullen, Registration Number S - 2555 certify that the corner location on this record was determined by me or under my direction and control and that this U.S. Public Land Survey Monument Record is correct and complete to the best of my knowledge and belief.

Benton A. McMullen
Signature Date 2/6/2007

