

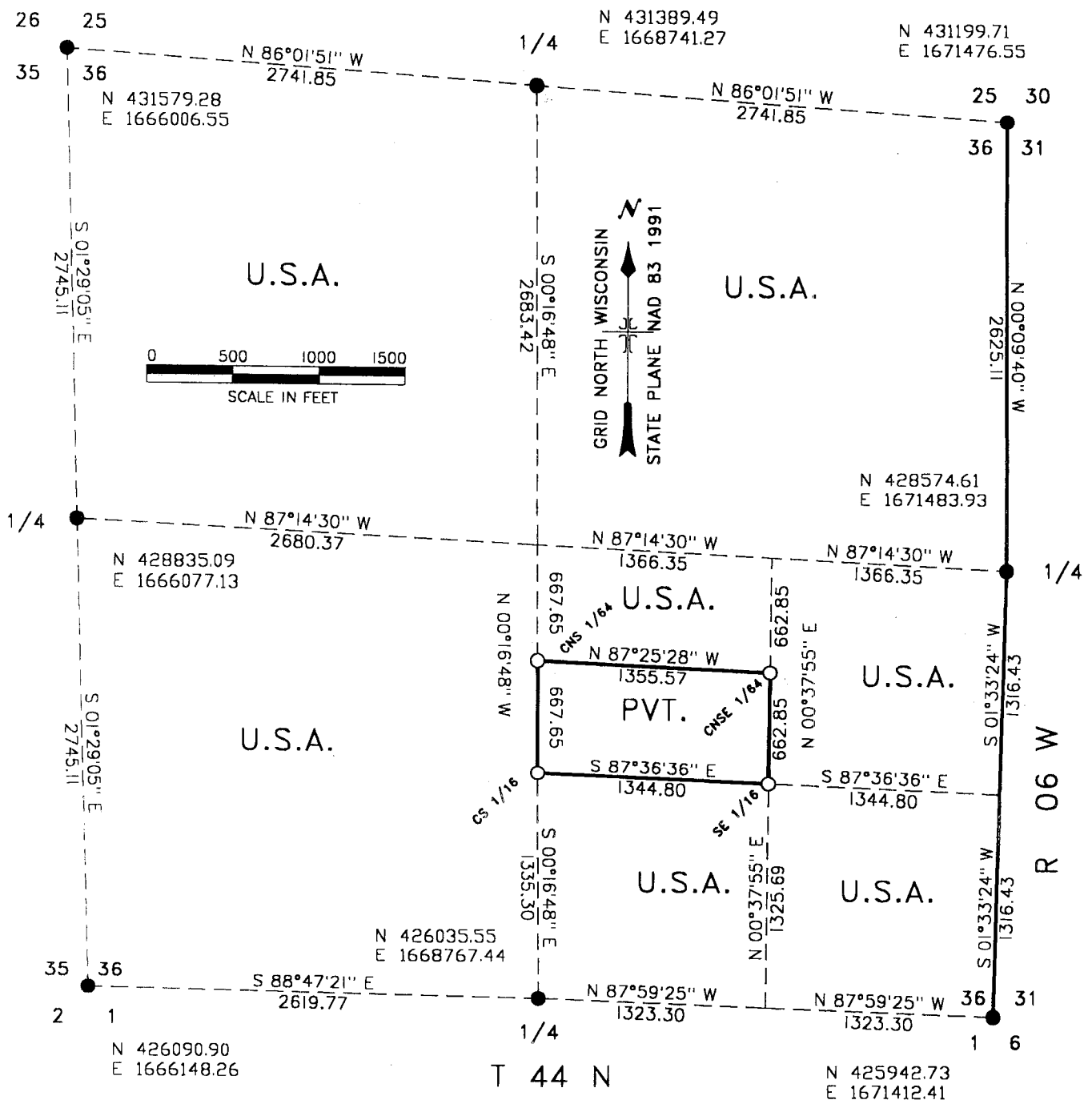


Stock No. 26273

#4947

MAP OF SURVEY

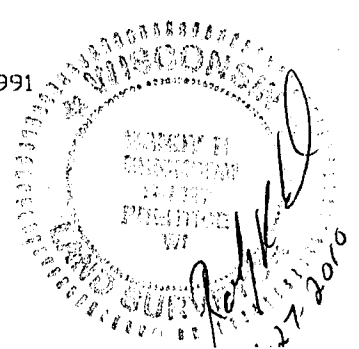
U.S. GOVERNMENT LANDS BEING THE WEST 1/2, THE NORTHEAST 1/4, THE SOUTH 1/2 SOUTHEAST 1/4, THE NORTHEAST 1/4 SOUTHEAST 1/4 AND THE NORTH 1/2 NORTHWEST 1/4 SOUTHEAST 1/4 OF SECTION 36, TOWNSHIP 45 NORTH, RANGE 7 WEST, BAYFIELD COUNTY, WISCONSIN.



LEGEND

- MONUMENT FOUND OR SET TO FOREST SERVICE AND BAYFIELD CO. STANDARD.
U.S. PUBLIC LAND SURVEY MONUMENT RECORD ON FILE WITH BAYFIELD CO.
- SET A 2" X 36" ALUMINUM PIPE MONUMENT WITH A 3" ALUMINUM CAP.
- LINE MARKED TO FOREST SERVICE STANDARD.

(N 426090) WISCONSIN NORTH ZONE STATE PLANE COORDINATES NAD 83 1991



36-45-7