

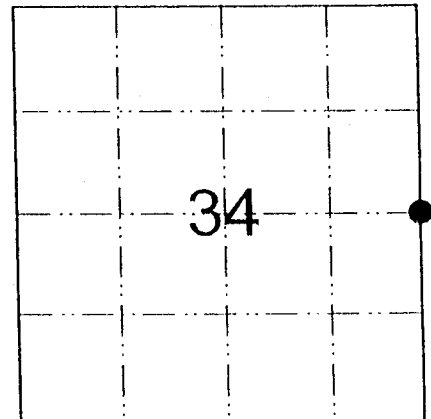
5008342000
 T R SEC ROW COL

U.S. PUBLIC LAND SURVEY MONUMENT RECORD

Note: This form is intended and designed to fulfill all requirements of Wisconsin Administrative Code, Chapter A-E 7.08, U.S. Public Land Survey Record (3) (a)(b)(c)(d)(e)(f)(g)(h)(i).

(a) Identify the corner by reference to the U.S. public land survey system.

Corner E 1/4
 Section SEC. 34
 Township T 50N North
 Range R 8W West
 Town/City/Village TOWN OF PORTWING
 Bayfield County



● = Corner Restored

(b) Describe any record evidence, monument evidence, occupational evidence, testimonial evidence, or any other material evidence you considered, and whether the monument was found or placed.

Set Bayfield County aluminum monument at old down fence corner.
 All original evidence destroyed by logging.

(c & d) Provide plan view drawing on reverse side.

(e) Describe any material discrepancy between the location of the corner as restored and the location of the corner as previously restored or reestablished. Show the discrepancy on the plan view drawing.

None

(f) Was the corner restored through acceptance of an obliterated location or a found perpetuated location?

(g & h) Was the corner reestablished through lost corner proportionate methods? If so, show the method, including the directions and distances to other public land survey corners used as evidence or used for proportioning in determining the corner location.

2163



Stock No. 26273

- (c) In the plan view below, provide reference ties to at least four witness monuments, or, if the location is within a municipality, to at least two witness monuments. (Witness monuments shall be of concrete, natural stone, iron, bearing trees, or other equally durable material.
- (d) In the plan view drawing depict the relevant monuments and reference ties which are sufficient in detail to enable accurate relocation of the corner monument if the corner monument is disturbed.

PATRICIA A OLSON
BAYFIELD COUNTY, WI
REGISTER OF DEEDS

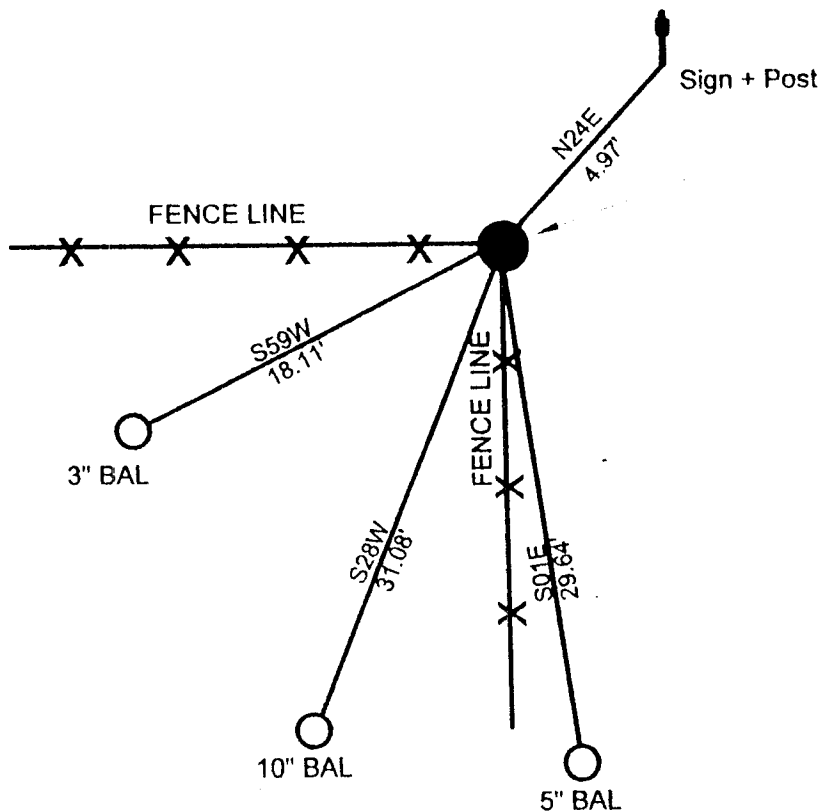
2003R-486047

09/26/2003 3:30 PM

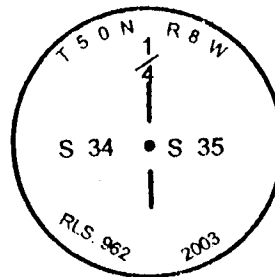
NO FEE 0.00

Pages 2

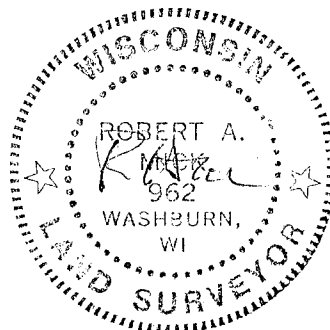
Vol. 4 LCR Pg. 263-264



SET BAY. CTY. MON.
STAMPED



(i) I, Robert A. Mick, Registration Number S-962 certify that the corner location on this record was determined by me or under my direction and that this U.S Public Land Survey Monument Record is correct and complete to the best of my knowledge and belief.



264
Signature Robert A. Mick

Date 9-26-03