

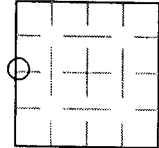
BAYFIELD COUNTY LAND SURVEY MONUMENT RECORD

INSTRUCTIONS: This record shall show the location of the corner and shall include all of the following nine elements (a through i).

(a) Identify the corner by reference to the U.S. land survey system.  
○ = Corner monument restored.

W 1/4 CORNER OF SECTION 29, T. 51 N., R. 3 W., IN THE TOWN OF RUSSELL, BAYFIELD COUNTY, WISCONSIN

SECTION 29

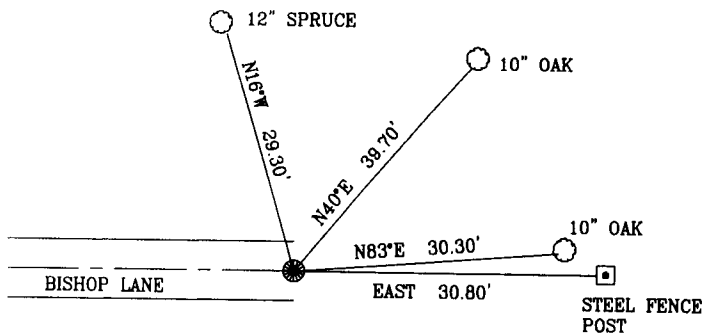


(b) Describe any record evidence, monument evidence, occupational evidence, testimonial evidence or any other material evidence you considered, and whether the monument was found or placed.

FOUND A 1" IRON PIPE ABOUT 18" BELOW THE SURFACE ON THE EXTENSION OF THE CENTERLINE OF BISHOP LANE. THE CORNER FALLS 15'± EAST OF THE END OF THE PAVEMENT BETWEEN A DRIVEWAY EAST AND A DRIVEWAY NE.

(c & d) Show a plan view drawing depicting the relevant monuments and reference ties which is sufficient in detail to enable accurate relocation of the corner monument if the corner is disturbed. Indicate North

Witnessed corner as follows: Bearing trees are blazed.



Mag. North  
Not to scale

(e) Describe any material discrepancy between the location of the corner as restored or re-established and the location of that corner as previously restored or re-established by distance and direction. Show the discrepancy on the plan view drawing under (d) above. Show the distances between the corner as previously restored or re-established and (1) the corner as restored or re-established, and (2) to at least 2 of the witness monuments shown on the drawing in (d), above. N/A

(f) Was the corner restored through acceptance of (1) an obliterated evidence location, or, (2) a found perpetuated location? A Found Perpetuated Location

(g & h) Was the corner re-established through lost corner proportionate methods? If so, show the method, including the directions and distances to other public land survey corners used as evidence or or used for proportioning in determining the corner location. N/A

(i) I, Timothy E. Oksiuta, Registration # 1550, certify that the corner location shown on this record was determined by me or under my direct supervision and control and that this U. S. Public Land Survey Monument Record is correct to the best of my knowledge and belief.

TIMOTHY E. OKSIUTA  
S-1550  
ASHLAND, WISCONSIN  
*Timothy E. Oksiuta*  
Signature 1/24/06 Date  
LAND SURVEYOR

SECTION 29, T. 51 N., R. 3 W.

NELSON  
SURVEYING  
INCORPORATED  
101 W. MAIN STREET  
SUITE 207  
ASHLAND, WISCONSIN 54806  
(715) 682-2692  
FAX: (715) 682-5100  
SURVEYING NORTHERN WISCONSIN SINCE 1954  
WWW.NELSONSURVEYING.COM ©

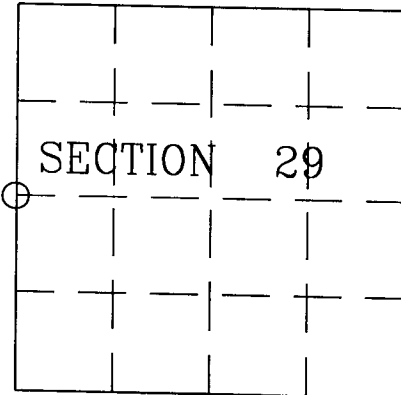
S 103 302000  
T R SEC ROW COL

# BAYFIELD COUNTY LAND SURVEY MONUMENT RECORD

Identify the corner by reference to the U.S. land survey system.

○ = Corner monument restored.

W 1/4 CORNER OF SECTION 29, T. 51 N.,  
R. 3 W., IN THE TOWN OF RUSSELL,  
BAYFIELD COUNTY, WISCONSIN

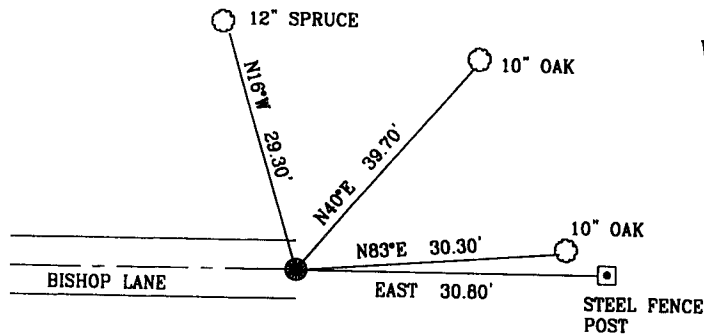


Describe any record evidence, monument evidence, occupational evidence, testimonial evidence, or any other material evidence you considered, and whether the monument was found or placed.

FOUND A 1" IRON PIPE ABOUT 18" BELOW THE SURFACE ON THE EXTENSION OF THE CENTERLINE OF BISHOP LANE. THE CORNER FALLS 15'± EAST OF THE END OF THE PAVEMENT BETWEEN A DRIVEWAY EAST AND A DRIVEWAY NE.

Provide plan view drawing.

Witnessed corner as follows: Bearing trees are blazed where appropriate. Distances are measured to nails in the side of the blazed tree.



Was the corner restored through acceptance of

- an obliterated evidence location
- found perpetuated location



Mag. North  
Not to scale

Describe any material discrepancy between the location of the corner as restored or re-established and the location of that corner as previously restored or re-established by distance and direction. Show the discrepancy on the plan view drawing above. Show the distances between the corner as previously restored or re-established and (1) the corner as restored or re-established, and (2) to at least 2 of the witness monuments shown on the drawing above.

N/A

Was the corner re-established through lost corner proportionate methods? If so, show the method, including the directions and distances to other public land survey corners used as evidence or used for proportioning in determining the corner location.

N/A

I, Timothy E. Oksiuta, Registration #1550, certify that the corner location shown on this record was determined by me or under my direction and control and that this U.S. Public Land Survey Monument Record is correct and complete to the best of my knowledge and belief.

Signature Timothy E. Oksiuta Date 7/19/05

SECTION 29 T. 51 N., R. 3 W.

**NELSON**  
**SURVEYING**  
**INCORPORATED**

101 W. MAIN STREET  
SUITE 207  
ASHLAND, WISCONSIN 54806  
(715) 682-2692  
FAX: (715) 682-5100

SURVEYING NORTHERN WISCONSIN SINCE 1954

WWW.NELSONSURVEYING.COM ©