



Stock No. 26273

#5139

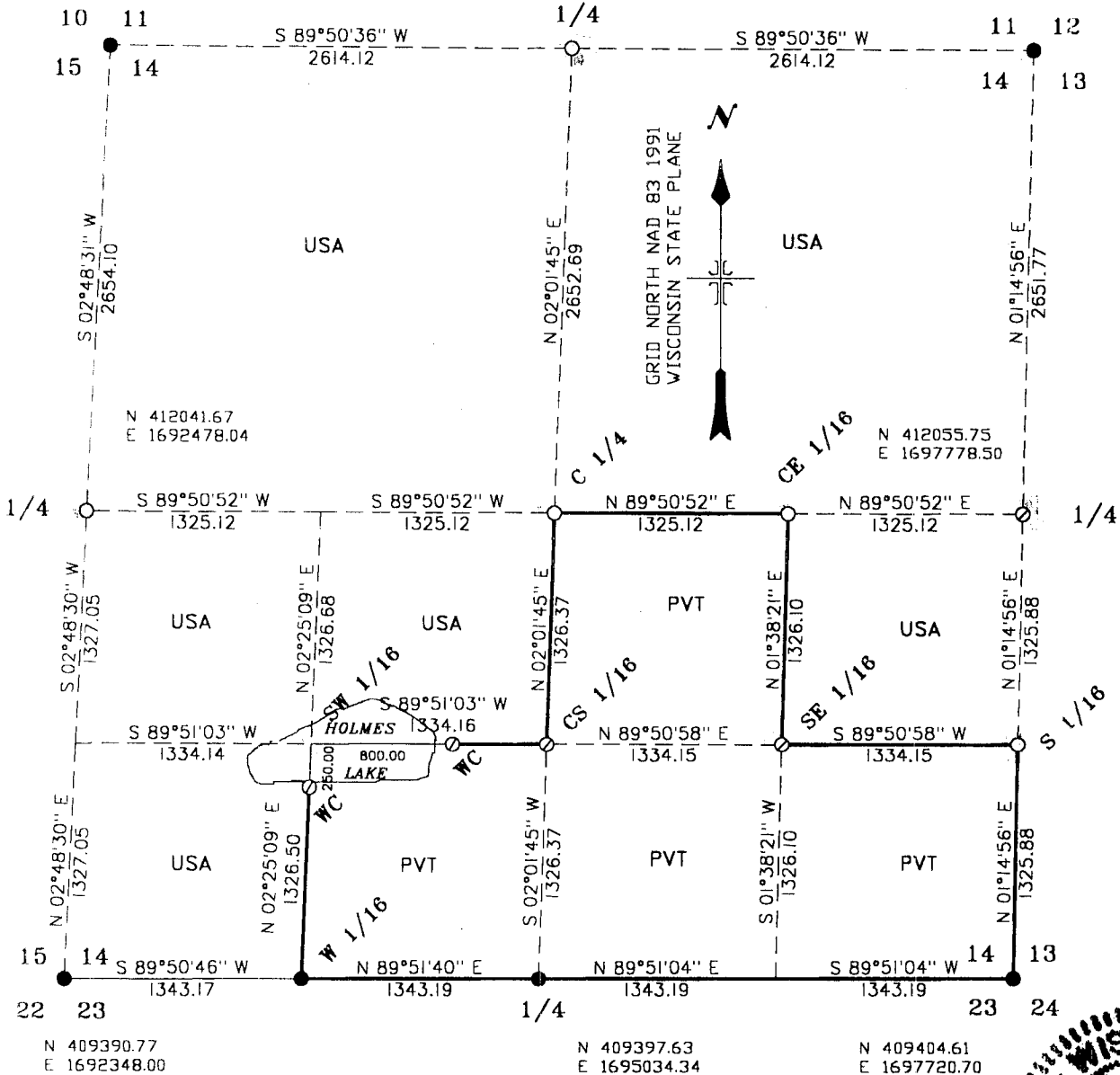
PLAT OF SURVEY

U.S. GOVERNMENT LANDS BEING THE NORTH ONE-HALF, THE NORTH 1/2 SW 1/4, THE NE 1/4 SE 1/4, AND THE SW 1/4 SW 1/4, SECTION 14, TOWNSHIP 44 NORTH, RANGE 6 WEST, 4TH P.M., BAYFIELD CO., WISCONSIN.

N 414692.58
E 1692608.07

N 414699.72
E 1695222.18

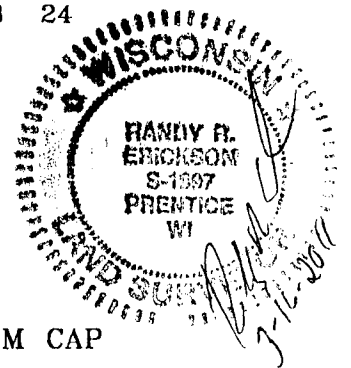
N 414706.89
E 1697836.29



LEGEND

- MONUMENT PERPETUATED TO U.S.F.S SPECS.
- SET A 2" x 36" ALUMINUM PIPE MONUMENT W/ ALUMINUM CAP
- ⊗ SET A 1" x 36" ALUMINUM DRIVE MONUMENT W/ 2" ALUMINUM CAP
- ⊙ SET A 1" x 60" ALUMINUM DRIVE MONUMENT W/2" ALUMINUM CAP

LINE MARKED TO U.S.F.S. STANDARDS



14-44-6