

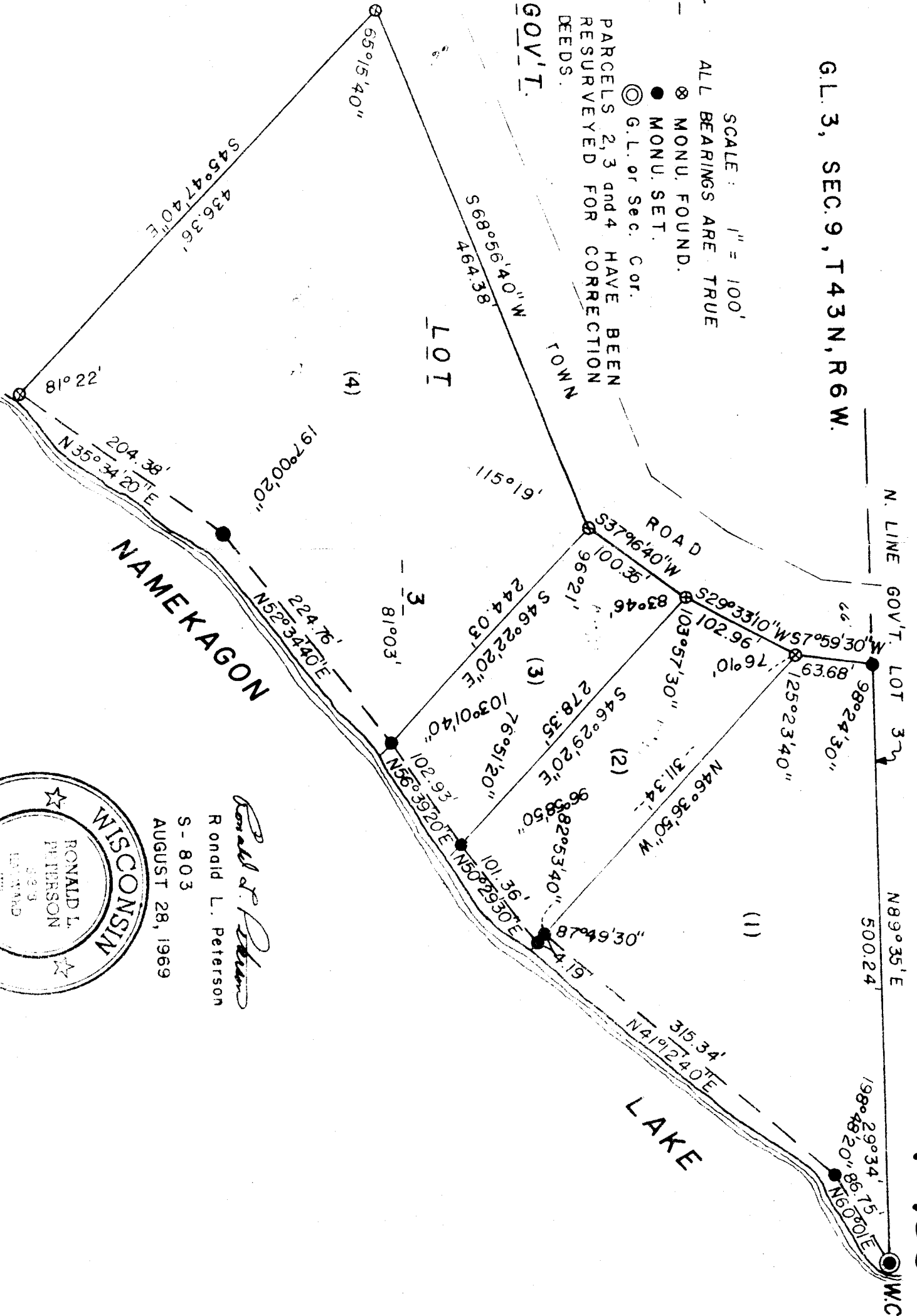
G.L. 3, SEC. 9, T43N, R6W.

SCALE: 1" = 100'  
ALL BEARINGS ARE TRUE

- ⊗ MONU. FOUND.
- MONU. SET.
- ⊙ G.L. or Sec. Cor.

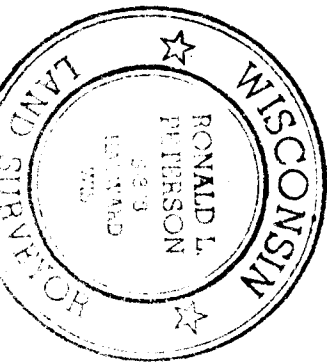
PARCELS 2, 3 and 4 HAVE BEEN RESURVEYED FOR CORRECTION DEEDS.

GOV'T.



9-436

NAMEKAGON



*Ronald L. Peterson*  
 Ronald L. Peterson  
 S - 803  
 AUGUST 28, 1969