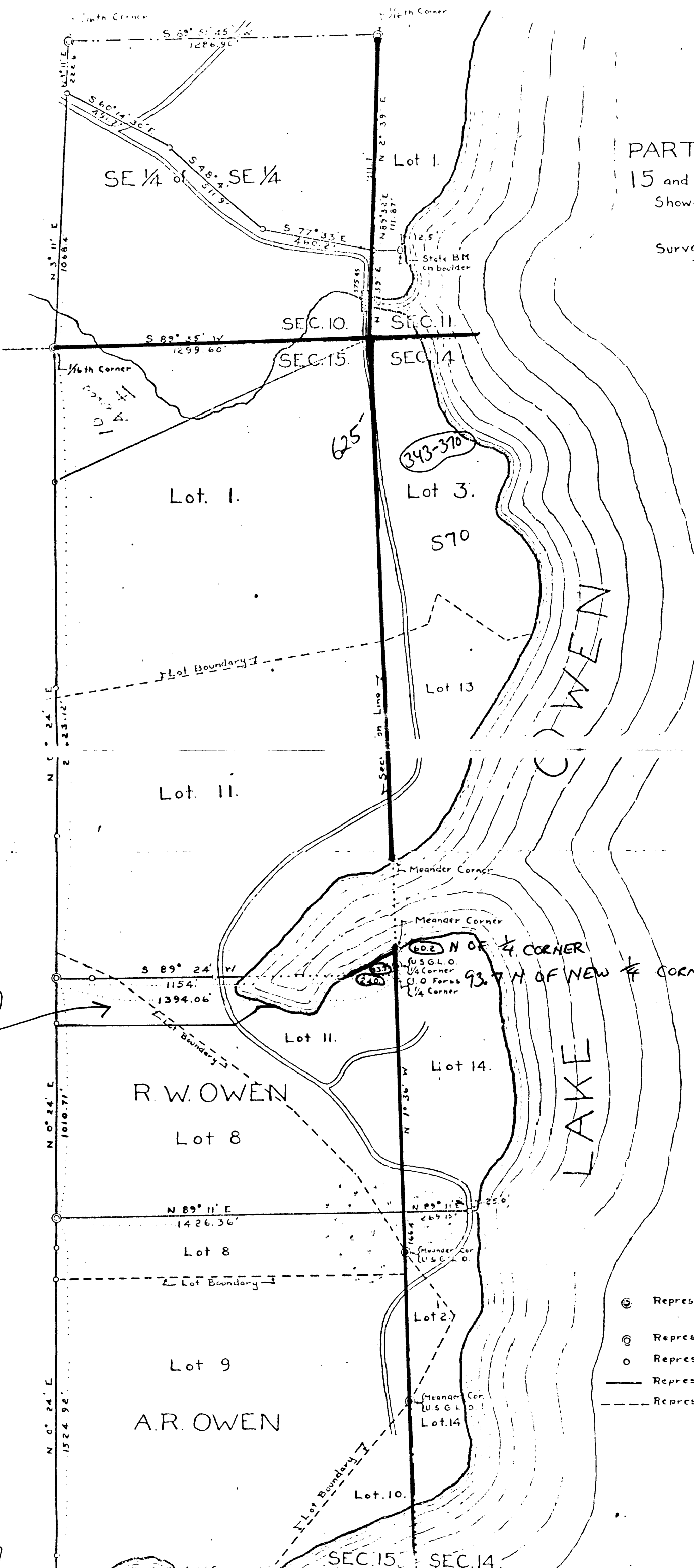


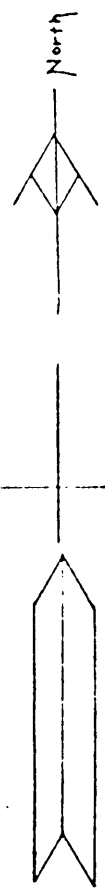
5037

fo

PLAT
 OF
 PART OF SECTIONS 10, 11, 14,
 15 and 22, T 44 N., R 7 W
 Showing boundaries of lands owned by
 A. R. Owen and R. W. Owen
 Surveyed by Jerod W. Day, Ashland, Wis.
 December 12, 1930.
 Scale 1 inch = 300 Feet.



283-559



LEGEND

- ⊙ Represents Iron Pipe Monument with Brass Top Set by U.S. General Land Office.
- ⊙ Represents Iron Pipe Monument with Cap of same
- Represents Small Iron Pipe or Pin.
- Represents Property Boundary Line
- - - Represents Government Lot Boundary Line

12-11-3

Monument is 1296.4' N 83° 2' 30" E of