

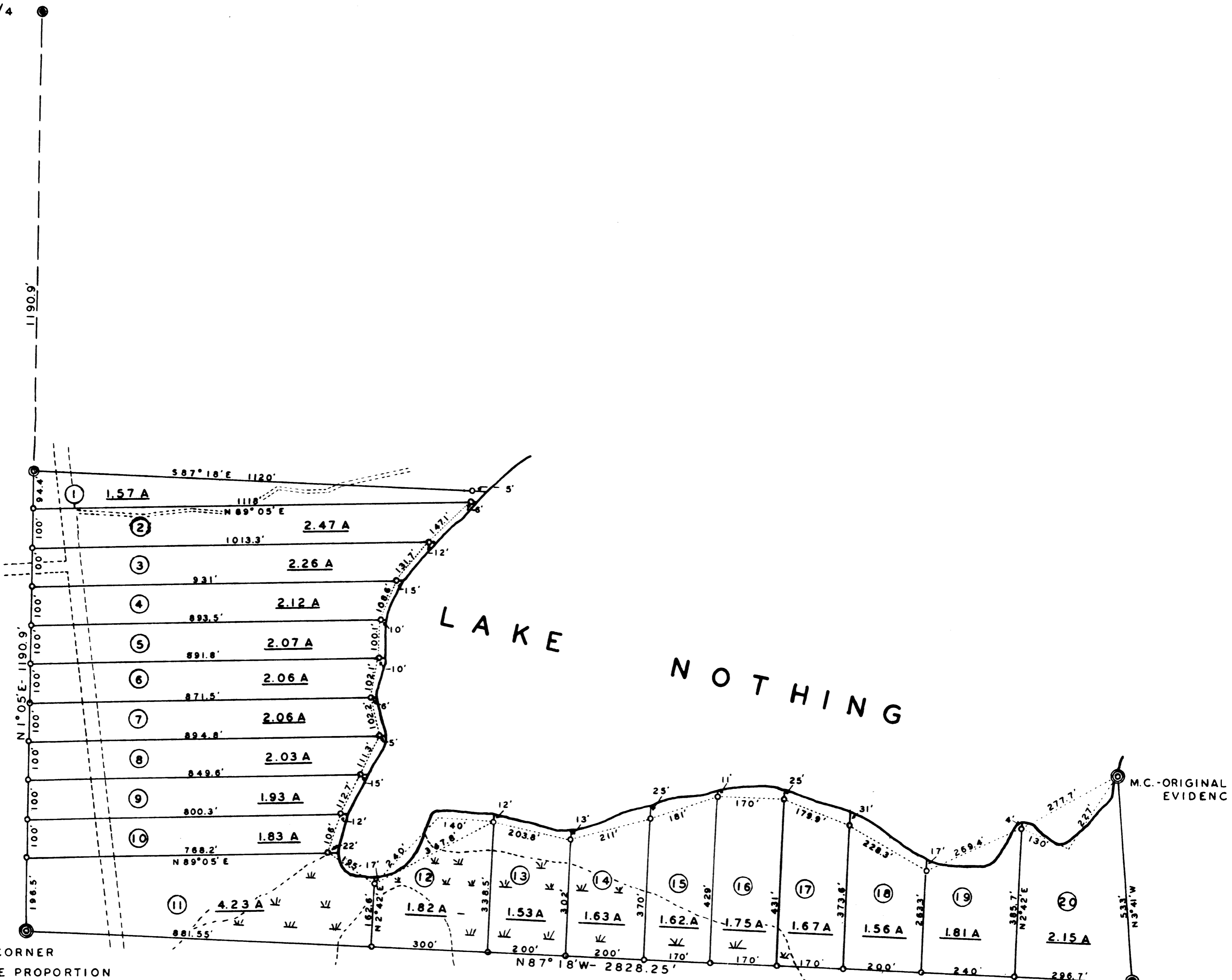
ALL OF GOV'T LOT 3, SECTION 21, T 44 N, R 6 W, 4TH P.M.  
 BAYFIELD COUNTY, WISCONSIN

1" = 200'

CENTER 1/4  
 SET IN PLACE  
 BY PREVIOUS  
 SURVEYOR

C.S. 1/16

1/4 CORNER  
 SINGLE PROPORTION



21 22  
 28 27