

CONSERVATION RESERVE ENHANCEMENT PROGRAM (CREP)

January 28, 2009

Bayfield County Land & Water Conservation Department

CREP Basics

- **Why participate?**
 - ▣ Good for water quality
 - ▣ Creates wildlife habitat
 - ▣ Payments (more on this later)
 - ▣ Public access is not required
 - ▣ You retain ownership of your land



Eligibility & Requirements

Eligibility:

- ❑ Open land (not forested)
- ❑ Clay soils
- ❑ Wetland or stream (permanent or seasonal)

Basic Requirements:

- ❑ 200-ft minimum buffer; 300-ft maximum
- ❑ Plant shrubs and/or trees (conifers) within buffers
- ❑ Sign 15-year contract or permanent easement (your choice)
- ❑ Ensure at least 50% survival of seedlings; maintain for 15 yrs

CREP Payments

□ 3 Types of Payments:

□ Up-front payment

- Paid after contract is signed

□ Annual payments

- Average \$41/acre
- Paid annually for 15 years

□ Cost-share payments

- 110% of eligible costs

15-year
agreement

\$150/acre

\$615/acre

(110%)

\$765/acre
plus
cost-share

Permanent
easement

\$580/acre

\$615/acre

(110%)

\$1195/acre
plus
cost-share

Example #1



Total Acres Eligible:

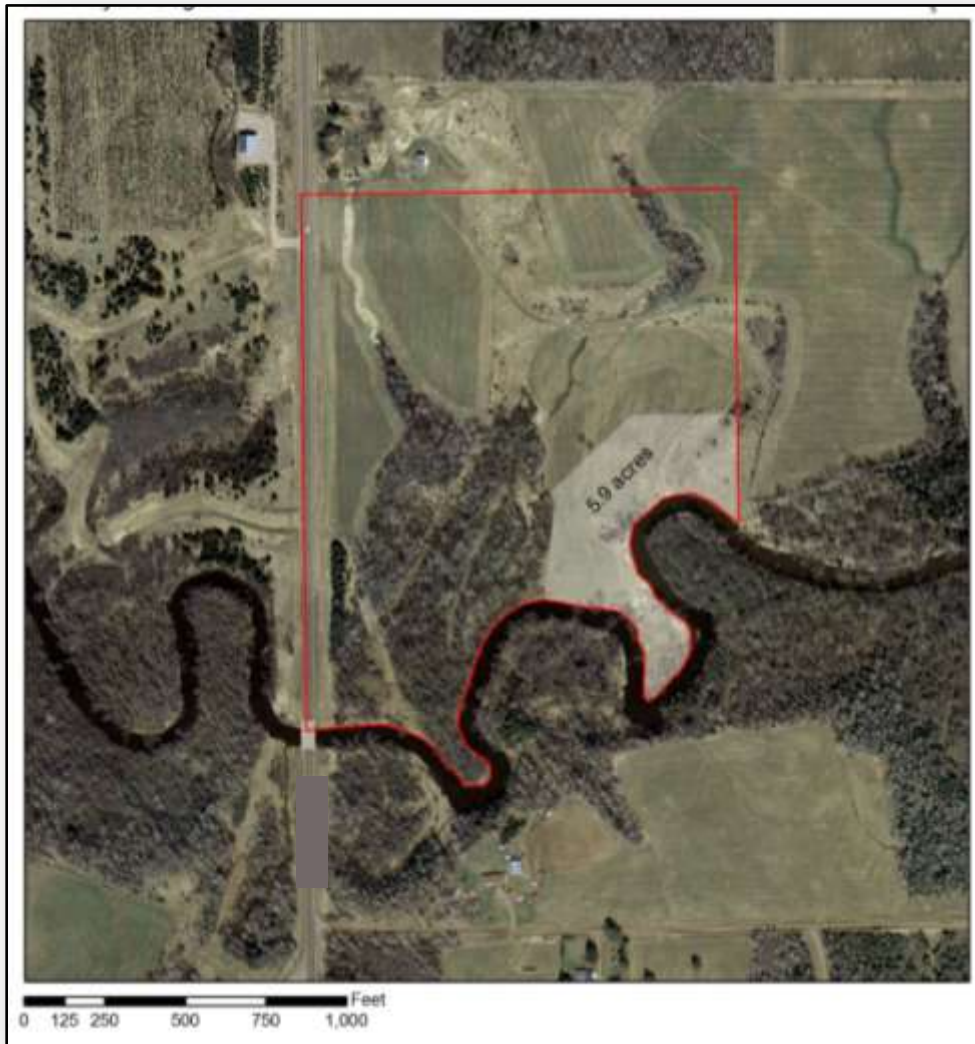
- 200-ft minimum = 5.2 acres
- 300-ft maximum = 9.6 acres

Payments:

- 15-year = \$3,800-7,000
- Permanent = \$6,000-11,100

Note: haying, grazing, and harvesting of trees are not permitted within the buffer for 15 years

Example #2



Buffer Size: 5.9 acres

15-Year Option:

- Up-front pymt = \$885
- Annual pymt = \$230 (x 15 yrs)
- Cost share (110%)
- TOTAL = **\$4,330**

Permanent Easement Option:

- Up-front pymt = \$3,400
- Annual pymt = \$230 (x 15 yrs)
- Cost share (110%)
- TOTAL = **\$6,870**

Conservation Reserve Enhancement Program



Darienne McNamara

Bayfield County Land & Water Conservation Dept.

373-6167

dmcnamara@bayfieldcounty.org