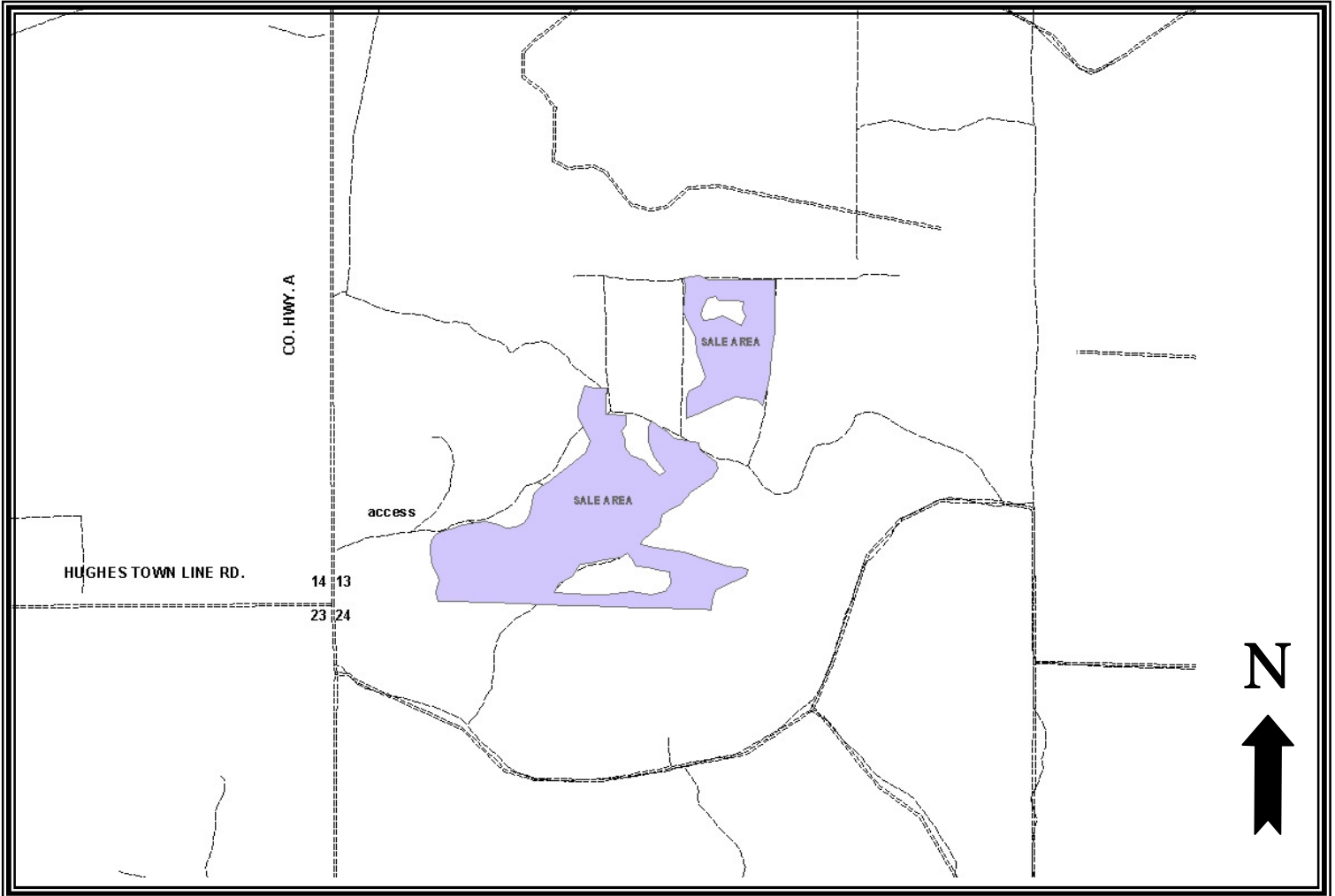


# Bayfield County Forestry Department

Forester: <b>B. KLOBUCHAR</b>	Twp: <b>46</b>	Range: <b>9W</b>	Sec: <b>13</b>	Estimated Volumes	
Acres: 51	Township: <b>HUGHES</b>			<b>RED PINE</b>	<b>640 cords</b>
Soil: <b>SAND</b>	Compartment: <b>139</b>			<b>JACK PINE</b>	<b>25 cords</b>
Topography: <b>ROLLING</b>	Tract Number: <b>16-09</b>				
Scale: <b>4 in. = 1 mi.</b>	Contract Number:				



**Harvest requirements:** This is a first thinning red pine stand. Harvest all the pine in every other row designated by orange paint. This is a ticket scale sale. Sale access will be off County Highway A. The plantation boundaries are obvious. Sale access roads are in place and only need to be widened. All pine must be hauled within 3 weeks of harvesting between May 1<sup>st</sup> and August 31<sup>st</sup>. The average diameter is 6 inches. If the stem within the a row is not merchantable it still needs to be severed

# Bayfield County Timber Sale Bid

Date:8-28-09

I hereby submit my bid on timber sale n number:16-09

Description: S1/2 pt. of, Sec. 13, T46N., R9W

Acres:51

This sale can be purchased either by the cord or ton. Please indicate which product you are bidding on.

Species	Volume			Minimum Bid Per Cord or Mbf	Minimum Bid Per Ton	Total Minimum Bid Per Product	Bid Price Per Unit of Volume	Total Bid Per Product
	Cords	MBF	Tons*					
RED PINE	640		3032	\$28.50	\$6.02	\$18,240.00		
JACK PINE	25		115	\$28.70	\$6.24	\$717.50		
<b>Totals</b>	665	0	3147	Total Min. Bid =		\$18,957.50	<b>Total Bid =</b>	

\*Tonnage volumes are based upon whole tree utilization. If the bid is based upon tons, then the timber sale contract will reflect this utilization.

Bid Price is based on unpeeled products.

Enclosed is the amount of \$ \_\_\_\_\_, which represents 10% of the stumpage value based on my total bid.

Name/Company: \_\_\_\_\_

Signature: \_\_\_\_\_

Address: \_\_\_\_\_

Telephone: \_\_\_\_\_

\*\*Please include the completed bid form and bid deposit in an envelope clearly marked "Timber Sale Bid Sale # \_\_\_\_" for each sale bid.

Submit bids to:  
 Bayfield County Forestry Department  
 Courthouse  
 Post Office Box 445  
 Washburn, WI 54891