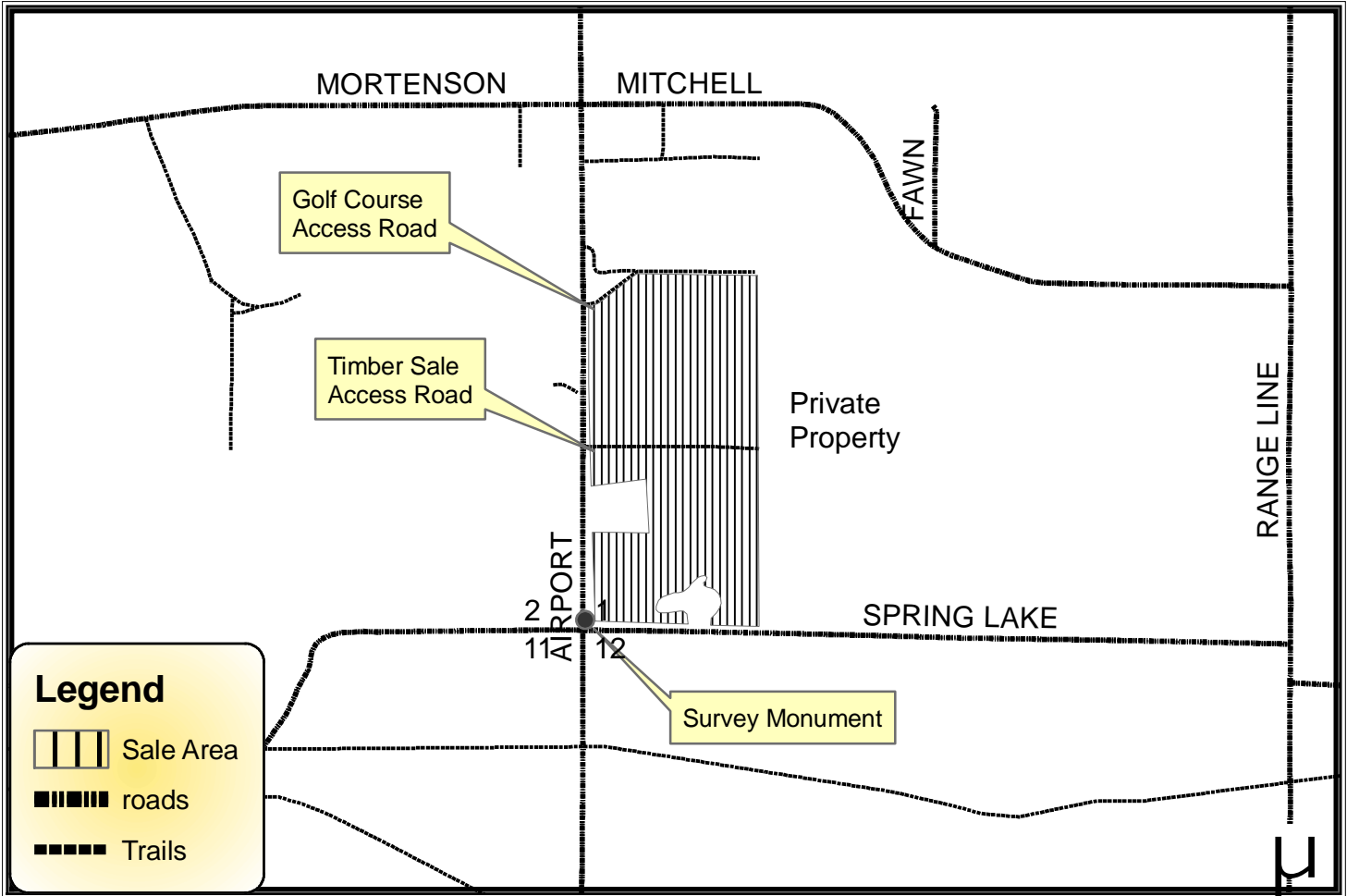


Bayfield County Forestry Department

Forester: <i>Dernovsek</i>	Twp: <i>47N</i>	Range: <i>09W</i>	Sec: <i>1</i>	Estimated Volumes Red Pine: 689 cord Scrub Oak: 5 cord
Acres: <i>67</i>	Township: <i>Hughes</i>			
Soil: <i>Sand</i>	Compartment: <i>106</i>	Stand: <i>25</i>		
Topography: <i>Flat</i>	Tract Number: <i>17-09</i>			
Scale: <i>1 inch = 0.25 miles</i>	Contract Number:			



Harvest Requirements:

- Ø This sale is 2nd Thin Red Pine Plantation being sold on a TICKET SCALE basis.
- Ø Harvest all trees marked with orange paint.
- Ø From May 1 to August 31 all pine must be hauled off site within 3 weeks of harvesting.
- Ø Utilize Red Pine to a 4" top and Scrub Oak to a 5" top.
- Ø The East sale boundary is adjacent to private property. It is identified by no trees being marked with orange paint. No logging operations will be allowed East of this Property line.
- Ø Access for logging operations will only be allowed on the trail indicated on the map. The gravel road accessing the golf course will not be used for logging operations.
- Ø Decking of wood along town roads will not be permitted without permission from the Township and Bayfield County.
- Ø Do not disturb any survey monuments.
- Ø This contract requires County authorization for all road/landing construction and places a number of other requirements on road construction and closure (refer to section 17).

Bayfield County Timber Sale Bid

Date: _____

I hereby submit my bid on timber sale number: 17-09

Description: Sec. 1 T49N R9W

Acres: 67

This sale can be purchased either by the cord or ton. Please indicate which product you are bidding on.

Species	Volume			Minimum Bid Per Cord or Mbf	Minimum Bid Per Ton	Total Minimum Bid Per Product	Bid Price Per Unit of Volume	Total Bid Per Product
	Cords	MBF	Tons*					
Red Pine	689		2224	\$37.60	\$11.65	\$25,906.40		
Oak	5		14	\$5.00	\$1.79	\$25.00		
Totals	694	0	2238	Total Min. Bid =		\$25,931.40	Total Bid =	

*Tonnage volumes are based upon whole tree utilization. If the bid is based upon tons, then the timber sale contract will reflect this utilization.

Bid Price is based on unpeeled products.

Enclosed is the amount of \$ _____, which represents 10% of the stumpage value based on my total bid.

Name/Company: _____

Signature: _____

Address: _____

Telephone: _____

**Please include the completed bid form and bid deposit in an envelope clearly marked "Timber Sale Bid Sale # ____" for each sale bid.

Submit bids to:
 Bayfield County Forestry Department
 Courthouse
 Post Office Box 445
 Washburn, WI 54891