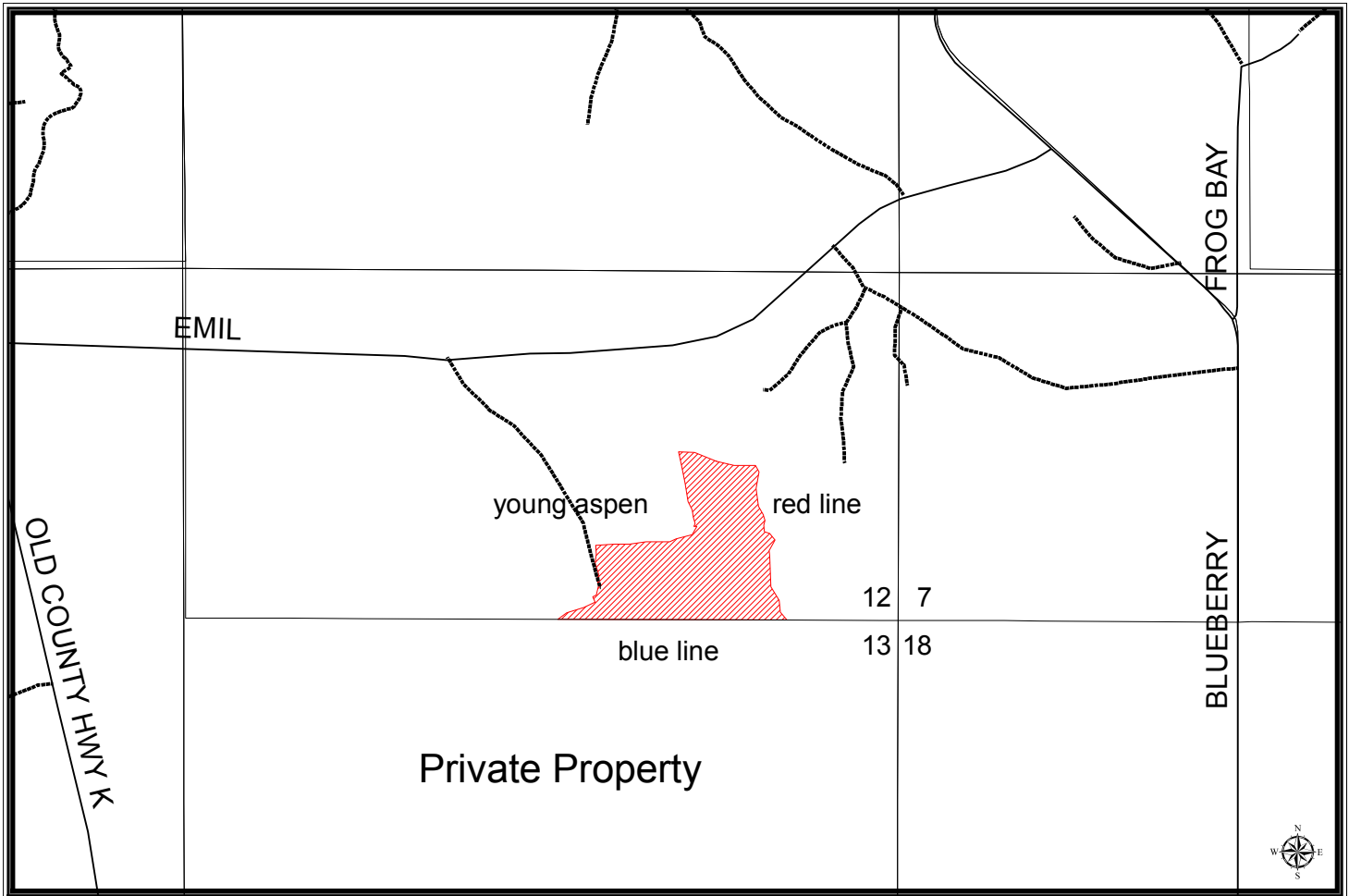


# Bayfield County Forestry Department

Forester: <i>Amman</i>	Twp: <i>51N</i>	Range: <i>4W</i>	Sec: <i>13</i>	Estimated Volumes  Aspen: 540 cds Mixed Hdws: 141 cds Balsam Fir/Spruce 22 cds
Acres: <i>25</i>	Township: <i>Russell</i>			
Soil: <i>Clay Loam</i>	Compartment: <i>9</i>	Stand: <i>21</i>		
Topography: <i>Flat</i>	Tract Number: <i>6-09</i>			
Scale: <i>1 inch = 0.25 miles</i>	Contract Number:			



Harvest Requirements:

- Scaled sale
- Aspen clearcut
- Sale boundaries are young aspen, blue paint, and red paint
- No equipment or trees shall cross the blue paint line
- Harvest all merchantable timber
- Sever all non-merchantable timber 2 inch in diameter or greater except non-merchantable fir/spruce
- Incidental take of small fir/spruce will be tolerated due to high density in some areas
- Sale must only be harvested in dry conditions. The soils in this area are heavy to clay so care must be taken to avoid rutting and general soil damage

# Bayfield County Timber Sale Bid

Date: \_\_\_\_\_

I hereby submit my bid on timber sale number: 6-09

Description: T51N R4W Sec.13 SW1/4NE1/4

Acres: 25

This sale can be purchased either by the cord or ton. Please indicate which product you are bidding on.

Species	Volume			Minimum Bid Per Cord or Mbf	Minimum Bid Per Ton	Total Minimum Bid Per Product	Bid Price Per Unit of Volume	Total Bid Per Product
	Cords	MBF	Tons*					
Aspen	540		1653	\$25.00	\$8.17	\$13,500.00		
Mixed Hdwds	141		755	\$20.00	\$3.74	\$2,820.00		
Fir	22		81	\$20.00	\$5.43	\$440.00		
<b>Totals</b>	<b>703</b>	<b>0</b>	<b>2489</b>	<b>Total Min. Bid =</b>		<b>\$16,760.00</b>	<b>Total Bid =</b>	

\*Tonnage volumes are based upon whole tree utilization. If the bid is based upon tons, then the timber sale contract will reflect this utilization.

Bid Price is based on unpeeled products.

Enclosed is the amount of \$ \_\_\_\_\_, which represents 10% of the stumpage value based on my total bid.

Name/Company: \_\_\_\_\_

Signature: \_\_\_\_\_

Address: \_\_\_\_\_

Telephone: \_\_\_\_\_

\*\*Please include the completed bid form and bid deposit in an envelope clearly marked "Timber Sale Bid Sale # \_\_\_\_" for each sale bid.

Submit bids to:  
 Bayfield County Forestry Department  
 Courthouse  
 Post Office Box 445  
 Washburn, WI 54891