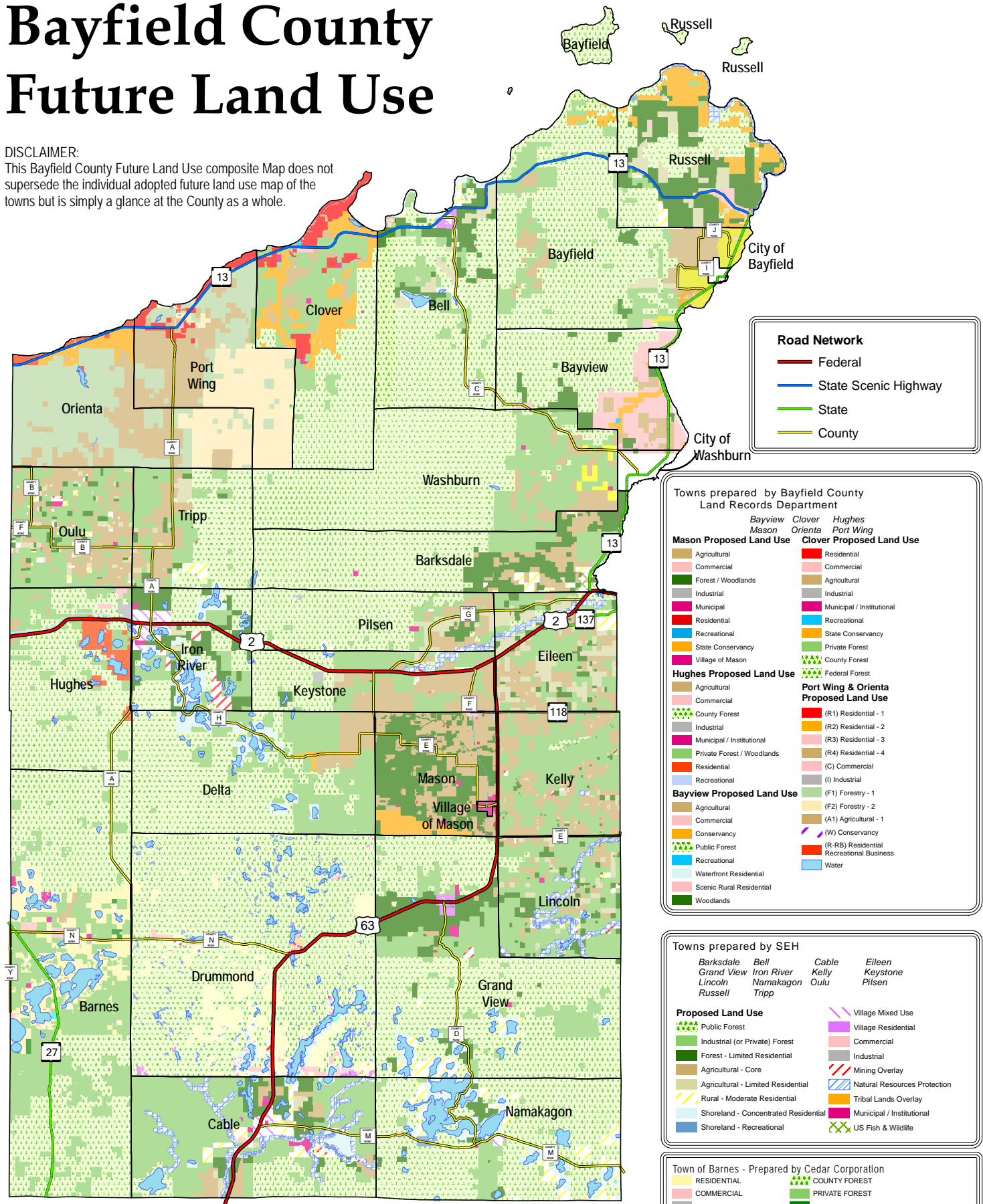


Bayfield County Future Land Use

DISCLAIMER:

This Bayfield County Future Land Use composite Map does not supersede the individual adopted future land use map of the towns but is simply a glance at the County as a whole.



Road Network

- Federal
- State Scenic Highway
- State
- County

Towns prepared by Bayfield County Land Records Department

Bayview	Clover	Hughes
Mason Proposed Land Use	Orienta	Port Wing
<ul style="list-style-type: none"> Agricultural Commercial Forest / Woodlands Industrial Municipal Residential Recreational State Conservancy Village of Mason 	<ul style="list-style-type: none"> Residential Commercial Agricultural Industrial Municipal / Institutional Recreational State Conservancy Private Forest County Forest Federal Forest 	<ul style="list-style-type: none"> Residential Commercial Agricultural Industrial Municipal / Institutional Recreational State Conservancy Private Forest County Forest Federal Forest
Hughes Proposed Land Use	Port Wing & Orienta Proposed Land Use	
<ul style="list-style-type: none"> Agricultural Commercial County Forest Industrial Municipal / Institutional Private Forest / Woodlands Residential Recreational Public Forest Recreational Waterfront Residential Scenic Rural Residential Woodlands 	<ul style="list-style-type: none"> (R1) Residential - 1 (R2) Residential - 2 (R3) Residential - 3 (R4) Residential - 4 (C) Commercial (I) Industrial (F1) Forestry - 1 (F2) Forestry - 2 (A1) Agricultural - 1 (W) Conservancy (R-RB) Residential Recreational Business Water 	
Bayview Proposed Land Use		
<ul style="list-style-type: none"> Agricultural Commercial Conservancy Public Forest Recreational Waterfront Residential Scenic Rural Residential Woodlands 		

Towns prepared by SEH

Barksdale	Bell	Cable	Eileen
Grand View	Iron River	Kelly	Keystone
Lincoln	Namakagon	Oulu	Pilsen
Russell	Tripp		

Proposed Land Use

- Public Forest
- Industrial (or Private) Forest
- Forest - Limited Residential
- Agricultural - Core
- Agricultural - Limited Residential
- Rural - Moderate Residential
- Shoreland - Concentrated Residential
- Shoreland - Recreational
- Village Mixed Use
- Village Residential
- Commercial
- Industrial
- Mining Overlay
- Natural Resources Protection
- Tribal Lands Overlay
- Municipal / Institutional
- US Fish & Wildlife

Town of Barnes - Prepared by Cedar Corporation

RESIDENTIAL	COUNTY FOREST
COMMERCIAL	PRIVATE FOREST
INDUSTRIAL	OTHER FORESTS
MUNICIPAL/INSTITUTIONAL	PARKS / RECREATIONAL
AGRICULTURE	

Town of Delta - Prepared by Foth

Delta Proposed Land Use

- Agriculture
- Public Resource
- Resource Conservation
- Rural Transition
- Shoreland Community

Towns of Drummond and Bayfield - Prepared by Northwest Regional Planning Commission

Drummond Proposed Land Use	Bayfield Proposed Land Use
<ul style="list-style-type: none"> Public Land Existing Gravel Pit Floodplain Government/Institutional High Density Residential Industrial Medium Density Residential 	<ul style="list-style-type: none"> Agricultural Use Public & Institutional - Cemetery Commercial Use Conservancy Forestry Use Public & Institutional - Town Government Marina Public Land Recreation/Residential/Business Residential Use Residential/Agricultural Use

Town of Washburn - Prepared by Sanders Wacker Bergly

Washburn Proposed Land Use

- Public Forest
- Private Forest
- Agricultural
- Residential
- Municipal / Institutional