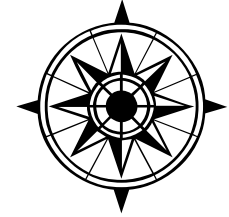
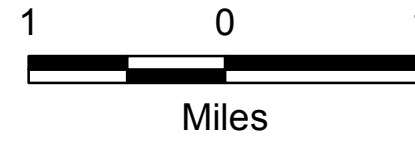


# Town of Barnes Zoning Districts



## County Zoning Districts

- (R1) - Residential - 1
- (R2) - Residential - 2
- (R3) - Residential - 3
- (R4) - Residential - 4
- (C) - Commercial
- (I) - Industrial
- (F1) - Forestry - 1
- (F2) - Forestry - 2
- (A1) - Agricultural - 1
- (A2) - Agricultural - 2
- (W) - Conservancy
- (R-RB) - Residential -  
Recreational Business

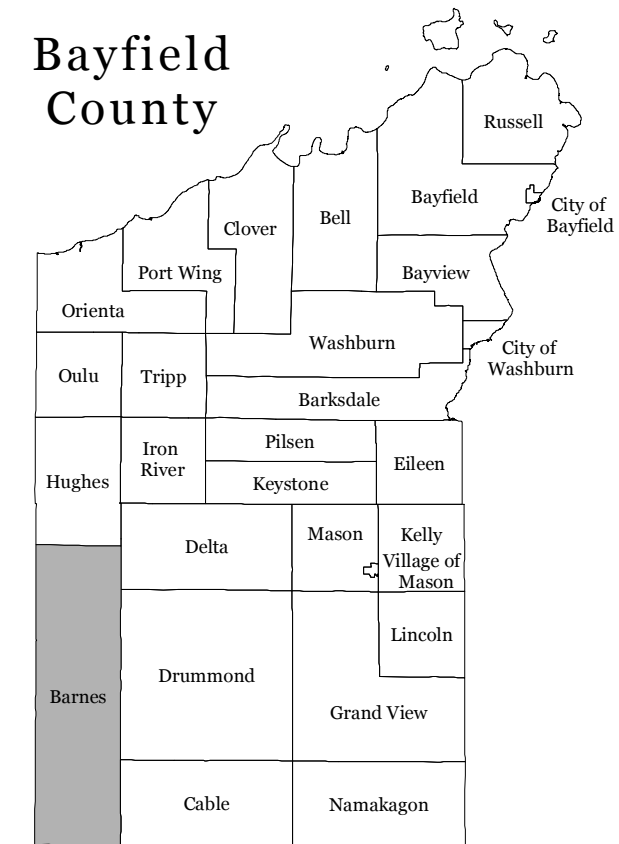
## Roads

- Federal Highway
- State Highway
- County Road
- Town Road
- Private Road

## Other Symbols

- MCD Boundary
- Section Lines
- Parcels
- 16000** Address Grid
- Streams
- Lakes

## Bayfield County

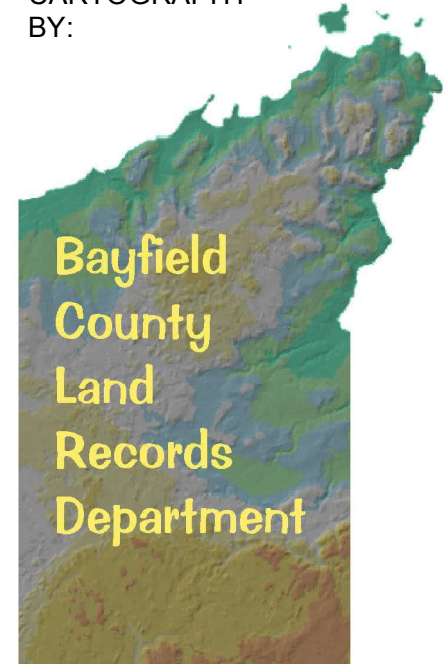


ZONING INFORMATION  
FURNISHED BY:



Bayfield County  
Zoning Department

CARTOGRAPHY  
BY:

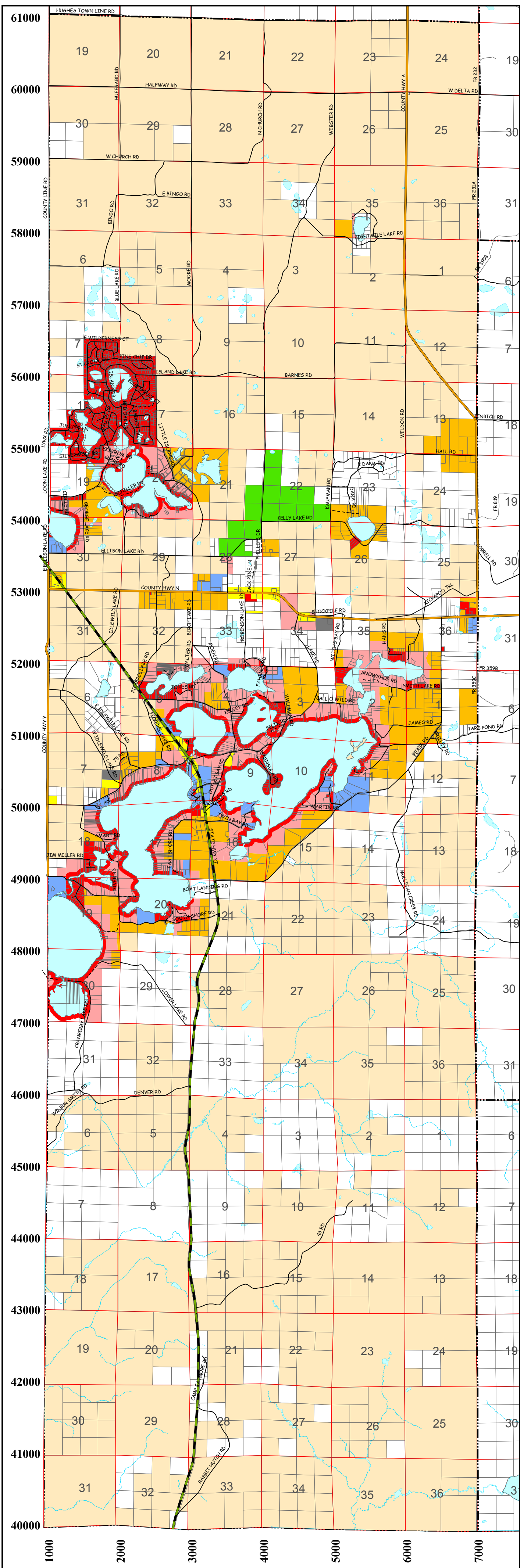


Bayfield  
County  
Land  
Records  
Department



Northwest  
Regional  
Planning  
Commission

The Zoning Districts portrayed on this map were derived from the Official Bayfield County Zoning District Map maintained by the Zoning Department. Bayfield County makes no warranty with respect to accuracy or completeness of this map and assumes no liability for its use or misuse. This map was last updated on August 31, 2011.



T46N  
T45N

T45N  
T44N

T44N  
T43N