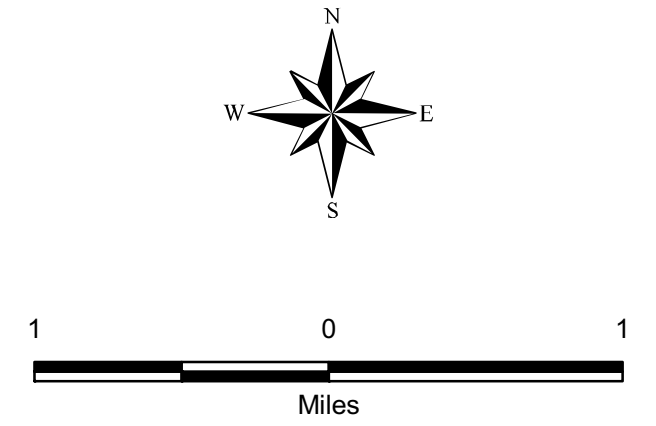
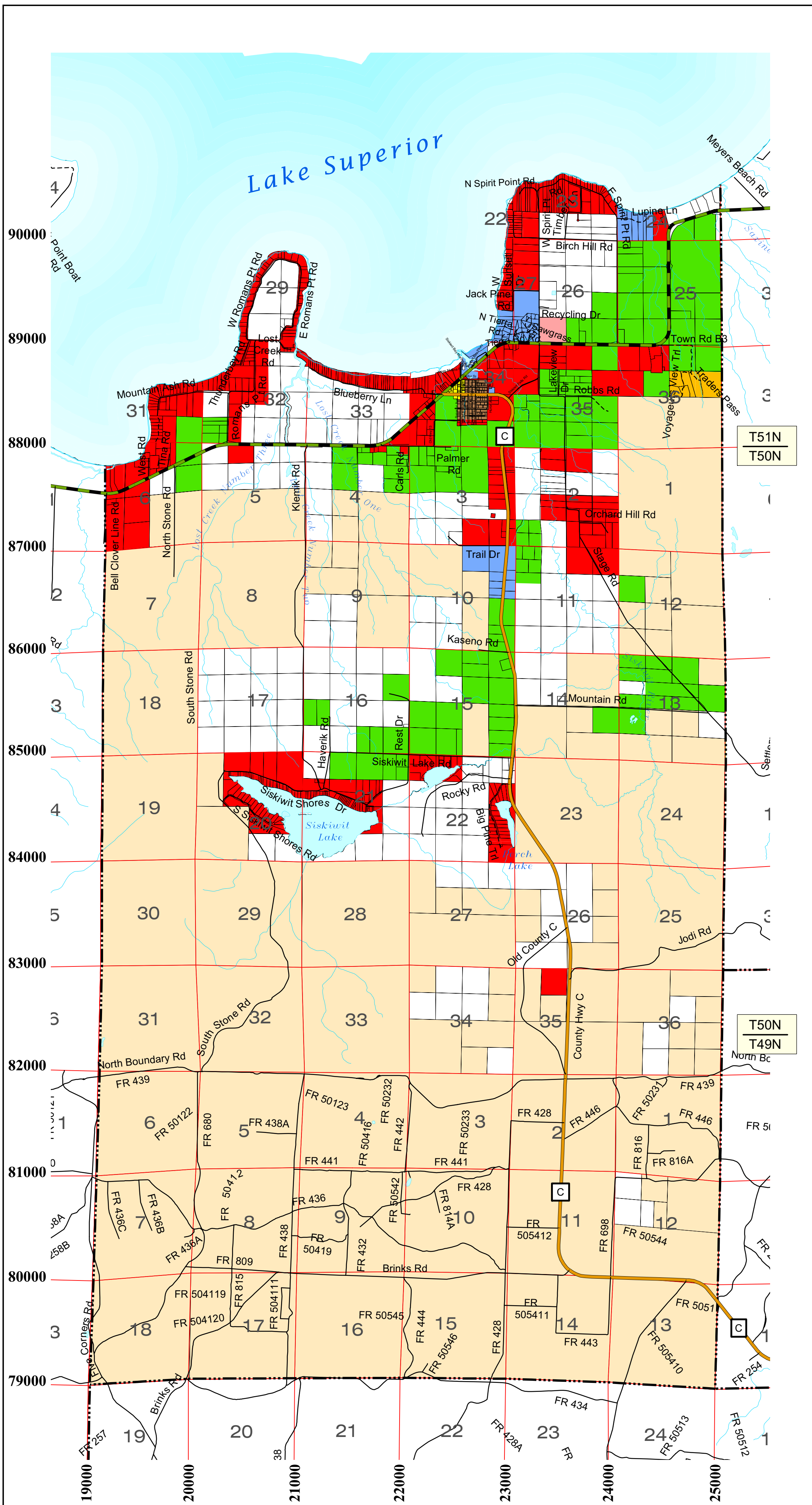


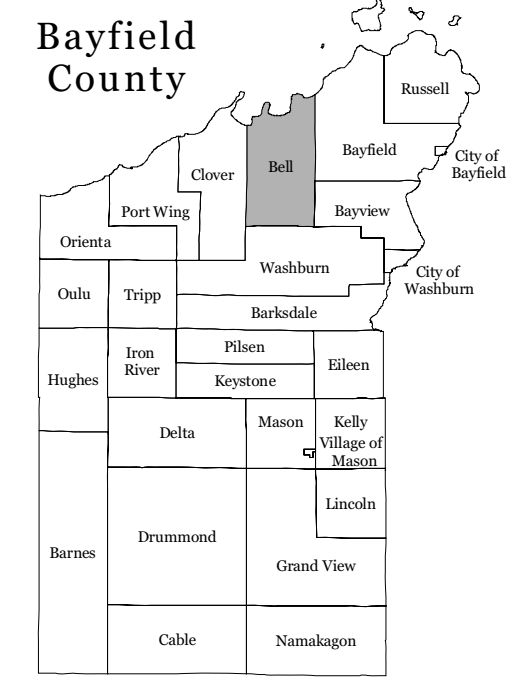
Town of Bell Zoning Districts



- County Zoning Districts**
- (R1) - Residential - 1
 - (R2) - Residential - 2
 - (R3) - Residential - 3
 - (R4) - Residential - 4
 - (C) - Commercial
 - (I) - Industrial
 - (F1) - Forestry - 1
 - (F2) - Forestry - 2
 - (A1) - Agricultural - 1
 - (A2) - Agricultural - 2
 - (W) - Conservancy
 - (R-RB) - Residential - Recreational Business

- Roads**
- Federal Highway
 - State Highway
 - County Road
 - Town Road
 - Private Road

- Other Symbols**
- MCD Boundary
 - Section Lines
 - Parcels
 - 16000 Address Grid
 - Streams
 - Lakes



ZONING INFORMATION FURNISHED BY:

CARTOGRAPHY BY:

The Zoning Districts portrayed on this map were derived from the Official Bayfield County Zoning District Map maintained by the Zoning Department. Bayfield County makes no warranty with respect to accuracy or completeness of this map and assumes no liability for its use or misuse. This map was last updated on March 1, 2007.