

STATE OF WISCONSIN  
WISCONSIN DEPARTMENT OF TRANSPORTATION  
TOWN PLAT RECORD

TOWN OF  
**CABLE**  
COUNTY: BAYFIELD

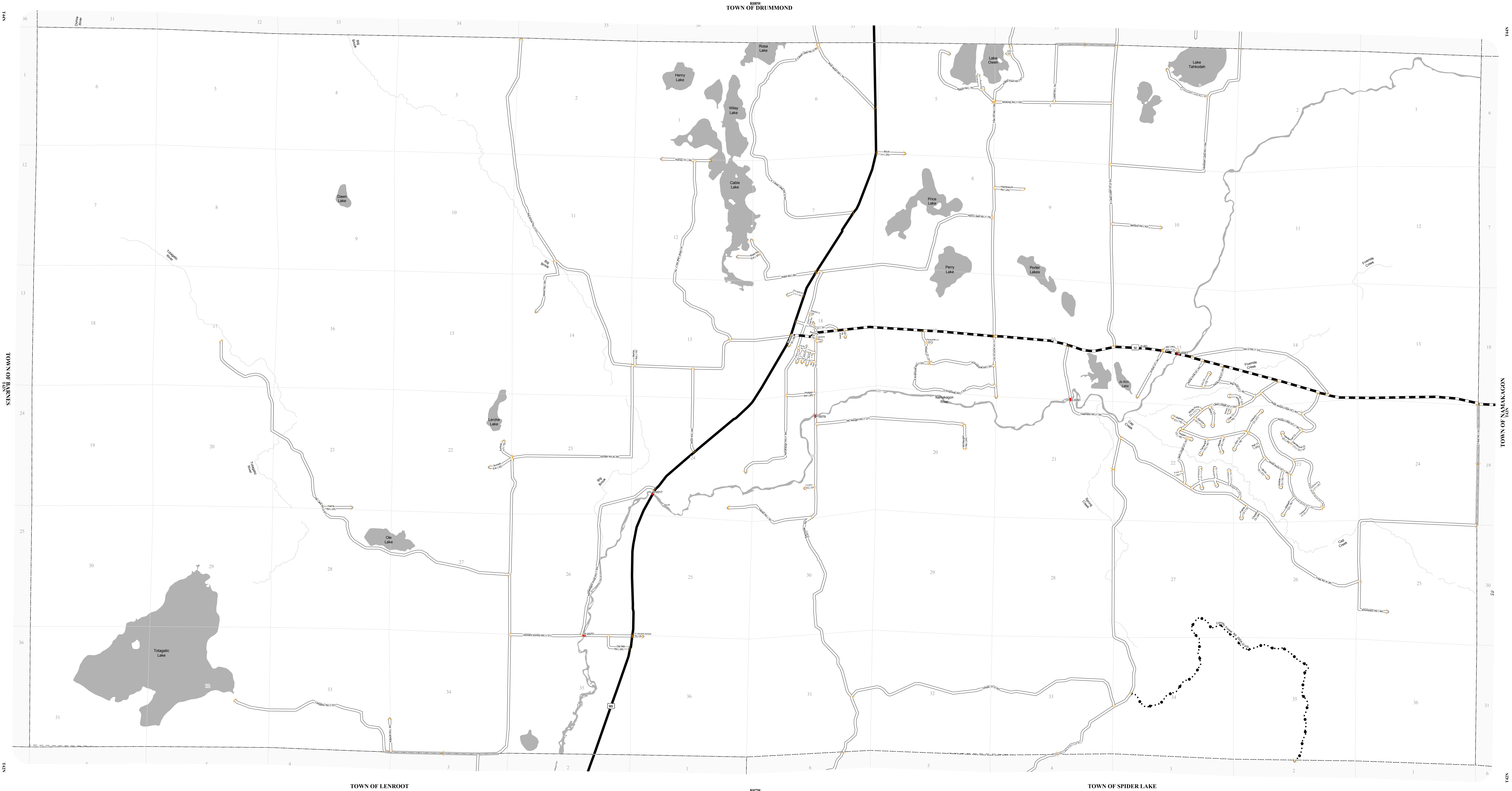
LOCAL ROADS/STREETS	
DATE	MILEAGE FOR LOCAL ROADS/STREETS
(1) 4-1-08	76.14
(2) 1-1-07	
(3) 4-1-07	

MILEAGE FOR COUNTY TRUNKS	
DATE	MILEAGE
4-1-08	5.82
1-1-07	00.00

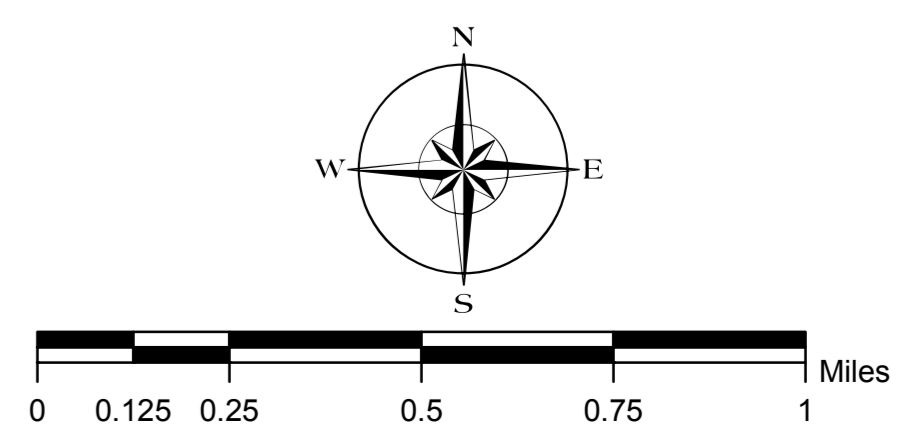
- (1) THIS DATA REPRESENTS THE LAST CERTIFIED MILEAGE AS CORRECTED BY THE DISTRICT WHICH MAY HAVE BEEN USED FOR PAST TRANSPORTATION AIDS.
- (2) THE TOWN CHARMAN OR CITY/VILLAGE CLERK IS TO FILL IN THE MILEAGE TO BE CERTIFIED AS OPEN TO THE PUBLIC AS OF THE FOLLOWING JANUARY, INCLUDING THE NEW CHANGES THAT ARE MADE ON THE PLAT.
- (3) THIS DATA REPRESENTS MILEAGE ADJUSTMENTS MADE BY THE D.O.T. DISTRICT DUE TO FIELD VERIFICATION, INVENTORY, ANNEXATION, ETC. TRANSPORTATION AID PAYMENTS MAY BE MADE BASED ON THIS FIGURE.

COUNTY FOREST ROAD MILEAGE	
DATE	MILEAGE
(4) 4-1-08	DNR APPROVED 2.45
(5) 1-1-07	DNR APPROVED .
(6)	ELIG TRANS AIDS .
(7)	NOT ELIG TRANS AIDS .

- (4) THIS DATA REPRESENTS THE MILEAGE REPORTED LAST CERTIFICATION YEARS BY THE COUNTY FOREST ADMINISTRATOR.
- (5) THE COUNTY FOREST ADMINISTRATOR IS TO FILL IN MILEAGE TO BE CERTIFIED AS COUNTY FOREST ROADS THAT ARE OPEN TO THE PUBLIC AS OF THE FOLLOWING JANUARY, INCLUDING NEW CHANGES THAT ARE ADDED TO THE COUNTY FOREST ROAD SYSTEM.
- (6) THIS IS TO BE FILLED IN BY THE HIGHWAY DISTRICT OFFICE, AFTER THE SURFACE AND ROADWAY WIDTHS HAVE BEEN REVIEWED TO DETERMINE ELIGIBILITY FOR TRANSPORTATION AIDS.
- (7) THIS DATA REPRESENTS DNR COUNTY FOREST ROADS MILEAGE THAT IS NOT ELIGIBLE FOR TRANSPORTATION AIDS.



- LEGEND:**
- County Trunk Highway
  - Local Road
  - County Forest-Eligible
  - US Highway
  - County Border
  - CVT Border
  - PLSS Border
  - Bridge
  - Route Identifier



This information contained on this map was created for the official use of the Wisconsin Department of Transportation (DOT). Any other use without the express written permission of the DOT is prohibited. The DOT expressly disclaims all liability regarding the use of this information for other than official DOT business.