

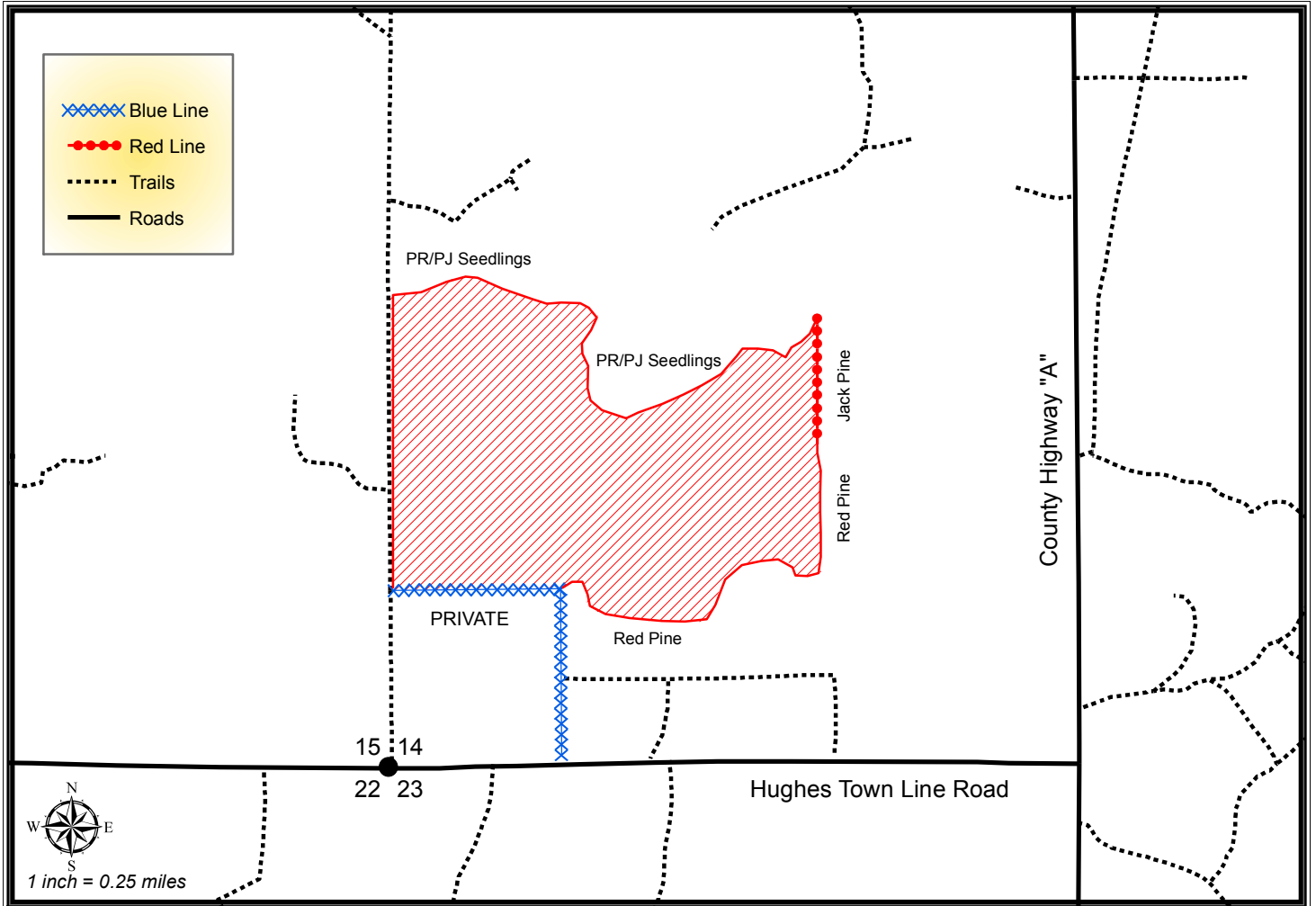
# Bayfield County Forestry & Parks Department

Forester: L. Neitzel, J. Neitzel	Twp: 46N	Range: 9W	Sec: 14
Acres: 146	Township: Barnes		
Soil: Sand	Compartment: 138	Stand: 4 & 34	
Topography: Flat	Tract Number: 01-14	Reforestation Code: PJ Seeding	
Scale: 4"=1 mile	Contract Number:		

## Estimated Volumes

	Whole Tree	Roundwood
Species	Tons	Cords
Jack Pine *	7559	2722
Aspen **	481	145

\* Approximately 99% jack pine and 1% red pine.  
\*\* Approximately 77% aspen, 22% scrub oak and 1% other hardwoods.



### Harvest Requirements:

- This sale is a jack pine clearcut being sold on a Ticket Scale Basis.
- Sale boundaries not indicated with red paint are identifiable on the ground by abrupt changes in timber types (recently planted clearcuts or red pine plantations) and by a forest road on the west.
- Harvest all merchantable timber, and sever all non-merchantable stems 2" in diameter and greater.
- If whole-tree harvested, 1 in 10 tops ≤ 4" diameter must be left scattered across the site.
- Sever all snags to facilitate aerial seeding except snags that pose a hazard to the operator.
- Harvested pine cannot be kept on the Bayfield County Forest for more than 3 weeks from May 1<sup>st</sup> to August 31<sup>st</sup>.
- Do not damage any survey monuments.
- To comply with the Best Management Practices for Invasive Species: Prior to moving equipment onto or off of the sale area, scrape or brush soil and debris from exterior surfaces of the logging equipment.
- Decking of wood along town roads will not be allowed without permission from Bayfield County Forestry Department
- This contract requires County authorization for all road/landing construction and places a number of other requirements on road construction and closure. (refer to Section 17)