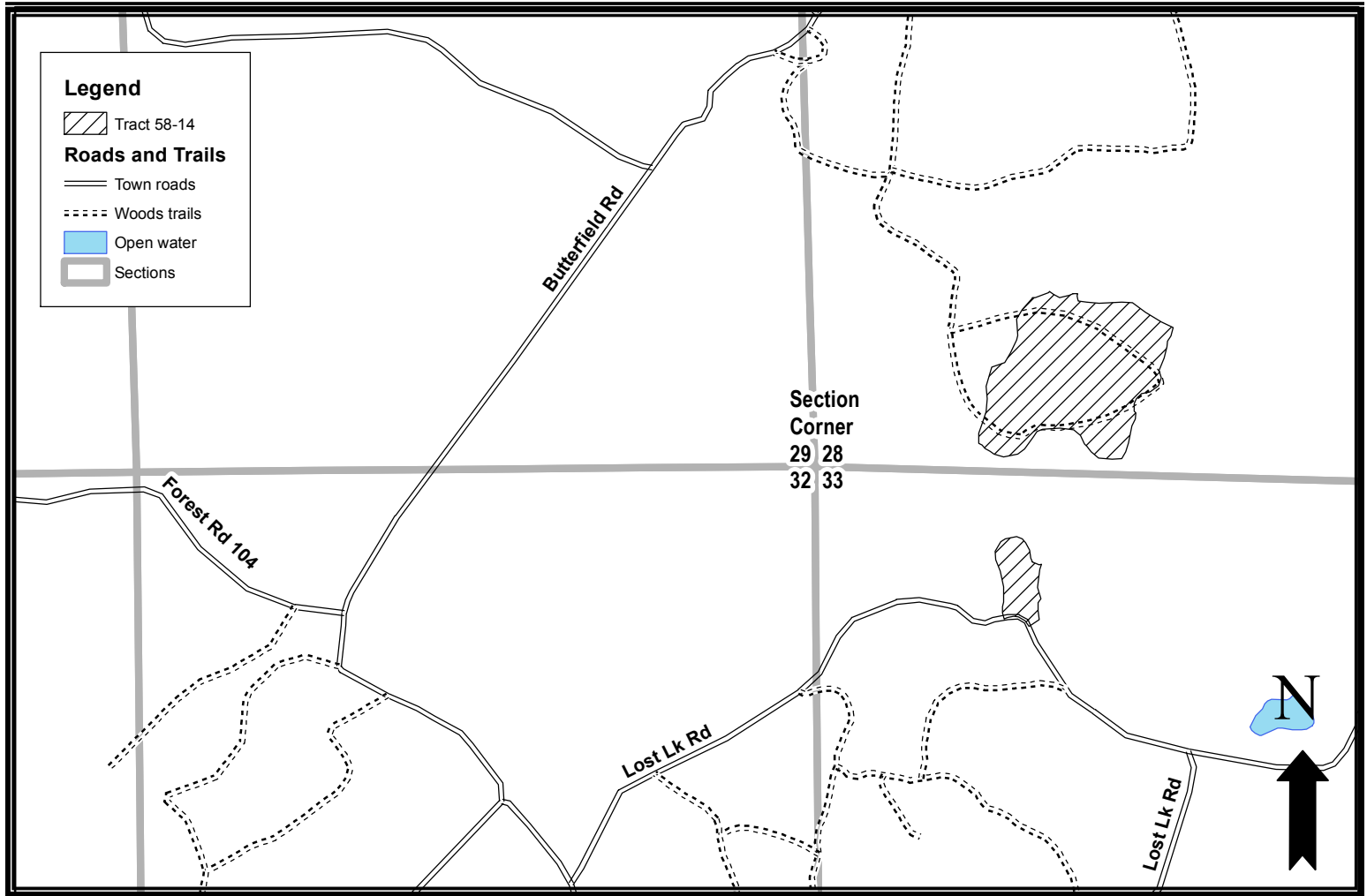


Bayfield County Forestry and Parks

Forester: LeBouton	Twp: 50N	Range: 05W	Sec: 28 & 33	Estimated Volumes:		
Acre: 35	Township: Bayview and Bayfield			Species	Cords	MBF
Soil: Sand	Compartment: 49	Stand: 34 & 35		Aspen*	200	
Topography: Rolling	Tract Number: 58-14	Reforestation Code: Natural		Red oak	280	11
Scale: 4" = 1 mile	Contract Number:			Red maple	60	
				Red pine, avg. 18" dbh	310	
				White pine, avg. 14" dbh **	260	

* Includes approx. 70 cords white birch and 10 cords balsam fir
 ** Includes approx. 15 cords jack pine



Harvest requirements:

- This is a ticket sale.
- Sale boundaries are red paint lines
- Whole-tree harvesting and/or utilization of tops less than 4" diameter will not be allowed.
- This is an overstory removal to release established advance regeneration. Minimize damage to saplings during harvest operations.
- CUT all merchantable balsam fir.
- CUT all other trees 6 inches diameter and greater, EXCEPT do not cut trees marked with purple paint.
- Do not damage any survey monumentation.
- Prior to moving equipment on to or off the sale area, scrape or brush debris and soil from exterior surfaces.
- All roads are in place. This contract requires county authorization for all road/landing construction and places a number of other requirements on road construction and closure.
- Decking of wood along town roads will not be allowed without permission of Bayfield County.
- Harvested pine cannot be kept on the Bayfield County Forest for more than three weeks from May 1st to August 31st.