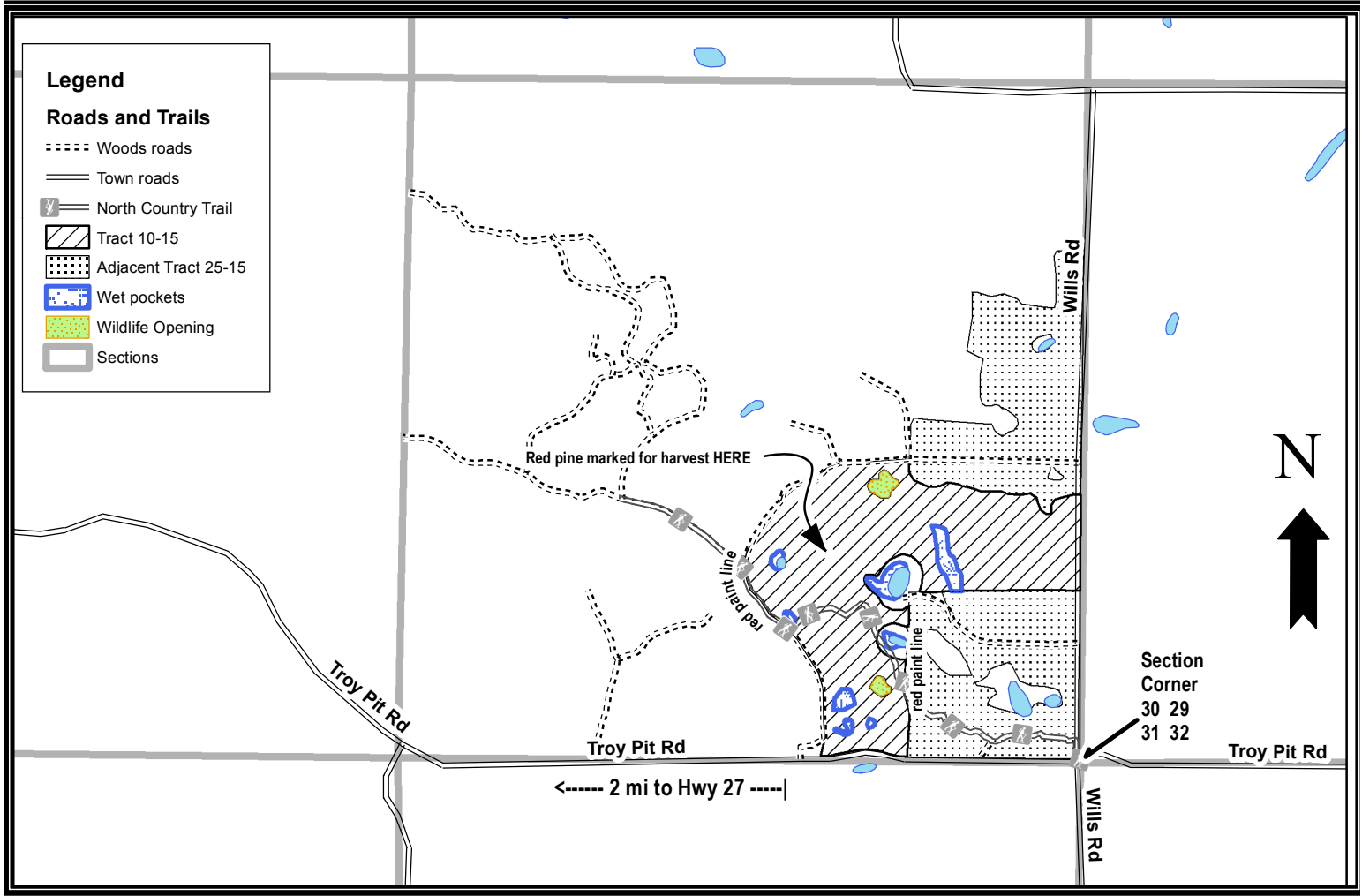


Bayfield County Forestry and Parks

Forester: LeBouton	Twp: 47N	Range: 09W	Sec: 30	Estimated Volumes:			
Acre: 64	Township: Hughes - North			Spp	4" cords	WT Tons	MBF
Soil: Loamy Sand	Compartment: 114	Stand: 20		Aspen	*800	2380	
Topography: Rolling	Tract Number: 10-15	Reforestation Code: Natural		Mixed hardwood	**540	1600	8
Scale: 4" = 1 mile	Contract Number:			Red oak	150	500	30
				Red pine	***20	65	
				*Includes 30 cords of white birch			
				**Includes 15 cords of white ash			
				***91% red pine, 3% jack pine, 3% fir, 3% white pine, Avg. Diameter 13"			



Harvest requirements:

- This is a ticket sale.
- Sale boundaries are red paint lines and abrupt changes in stand type (red pine plantations on east, south, and north)
- DO NOT use wildlife openings for harvest operations or for decking wood.
- The North Country Trail runs through stand. Do not cut blue-painted trees or purple-painted trees along trail. Keep slash 18" or less within 25ft of the North Country Trail. Do not operate machinery on the North Country Trail, except where approved in writing by Sale Administrator.
- Leave a 15-ft no-harvest buffer around wet pockets, including any unmapped wet pockets.
- Harvest all hardwood, jack pine, and all fir 4" dbh and larger. Sever all hardwood stems 2" dbh and larger
- Harvest all orange-marked red pine and white pine. Do not cut un-marked pine.
- Do not cut snags, except for those that are a safety hazard to logging operations.
- This sale includes ten trees that are painted with a purple ring and a purple "X". Operator must fell and leave all trees marked with a purple "X". "X" marked trees should be cut above the purple ring and should lie as close to the high stump as possible. These trees will create ruffed grouse drumming habitat.
- Do not damage any survey monumentation.
- Prior to moving equipment on to or off the sale area, scrape or brush debris and soil from exterior surfaces.
- All roads are in place. This contract requires county authorization for all road/landing construction and places a number of other requirements on road construction and closure.
- Decking of wood along town roads will not be allowed without permission of Bayfield County.