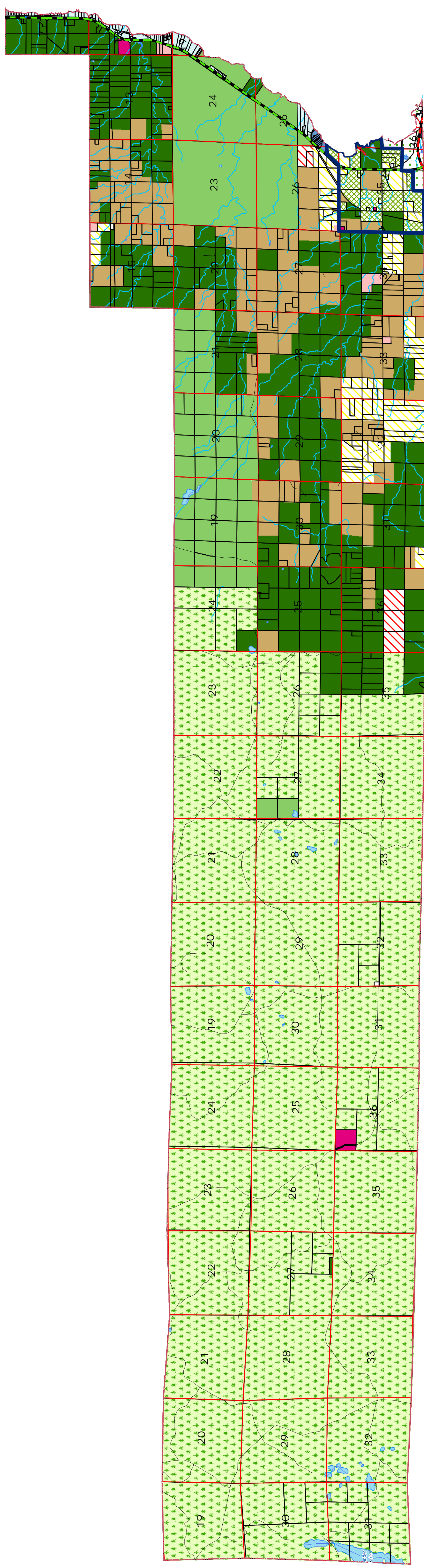


Town of Barksdale Future Land Use



Nov 09, 2009



- Public Forest
- Publicly Managed Lands (not forested)
- Industrial (or Private) Forest
- Forest - Limited Residential
- Agricultural Core
- Agricultural - Limited Residential
- Rural - Moderate Residential
- Shoreland - Concentrated Residential
- Shoreland Recreation

- Village Mixed Use
- Village Residential
- Commercial
- Industrial
- Mining Overlay
- Natural Resources Protection *
- Tribal Lands Overlay
- Municipal / Institutional
- US Fish & Wildlife Natural Resource Protection Wildlife Preserve

- Roads
- Federal
- State
- County
- Town
- Private
- Water
- Section Line
- Municipal Boundary
- County Boundary
- Sanitary District
- Whitesley Creek
- National Wildlife Refuge

*The NRP Overlay shall be referenced on a separate map