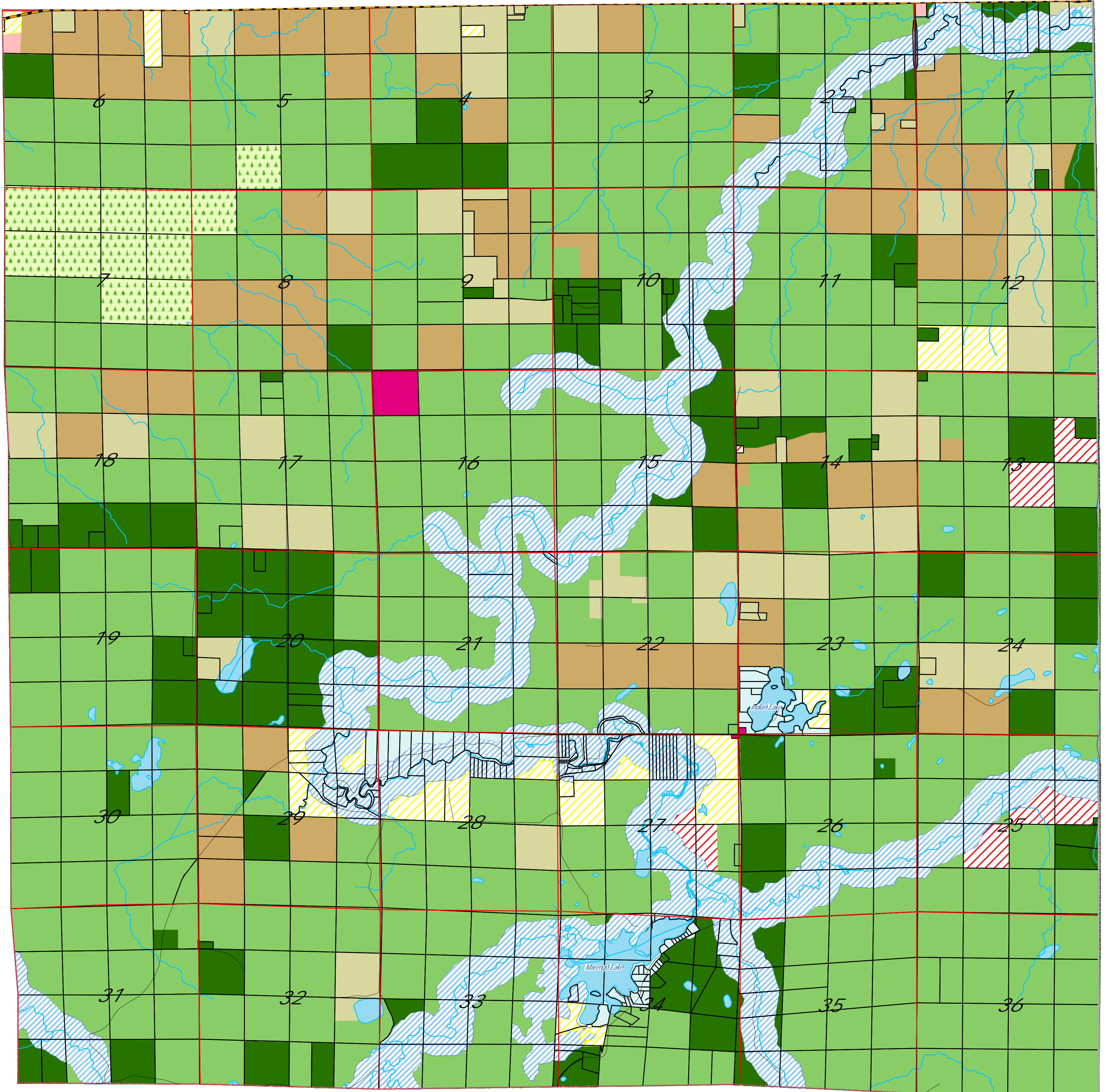
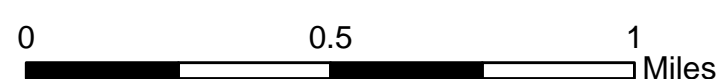


# Town of Lincoln Future Land Use



Nov 09, 2009



- |  |   |  |  |
|--|---|--|--|
| <ul style="list-style-type: none"> <li> Public Forest</li> <li> Industrial (or Private) Forest</li> <li> Forest - Limited Residential</li> <li> Agricultural Core</li> <li> Agricultural - Limited Residential</li> <li> Rural - Moderate Residential</li> <li> Shoreland - Concentrated Residential</li> <li> Shoreland Recreation</li> </ul> | <ul style="list-style-type: none"> <li> Village Mixed Use</li> <li> Village Residential</li> <li> Commercial</li> <li> Industrial</li> <li> Mining Overlay</li> <li> Natural Resources Protection *</li> <li> Tribal Lands Overlay</li> <li> Municipal / Institutional</li> </ul> | <p><b>Roads</b></p> <ul style="list-style-type: none"> <li> Federal</li> <li> State</li> <li> County</li> <li> Town</li> <li> Private</li> <li> Water</li> </ul> | <ul style="list-style-type: none"> <li> Section Line</li> <li> Municipal Boundary</li> <li> County Boundary</li> <li> Sanitary District</li> </ul> |
|--|---|--|--|

\*The NRP Overlay shall be referenced on a separate map